

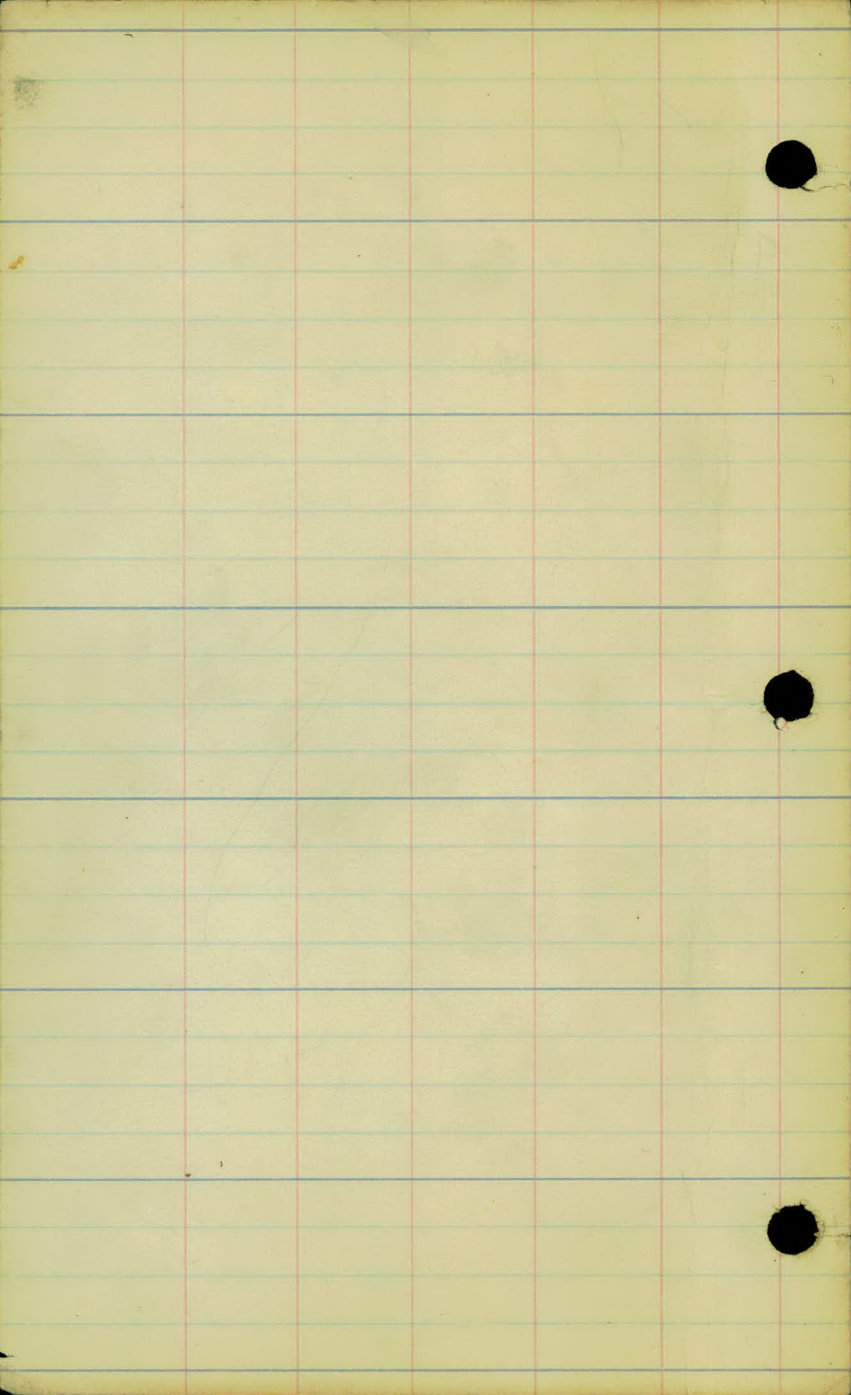
PLANS SURVEY
PAYNE AVE. CONNECTION

From No. City Limits
To. S.T.H. N^o 1 - (Arcade St.)
CO. PROJ. 24-58

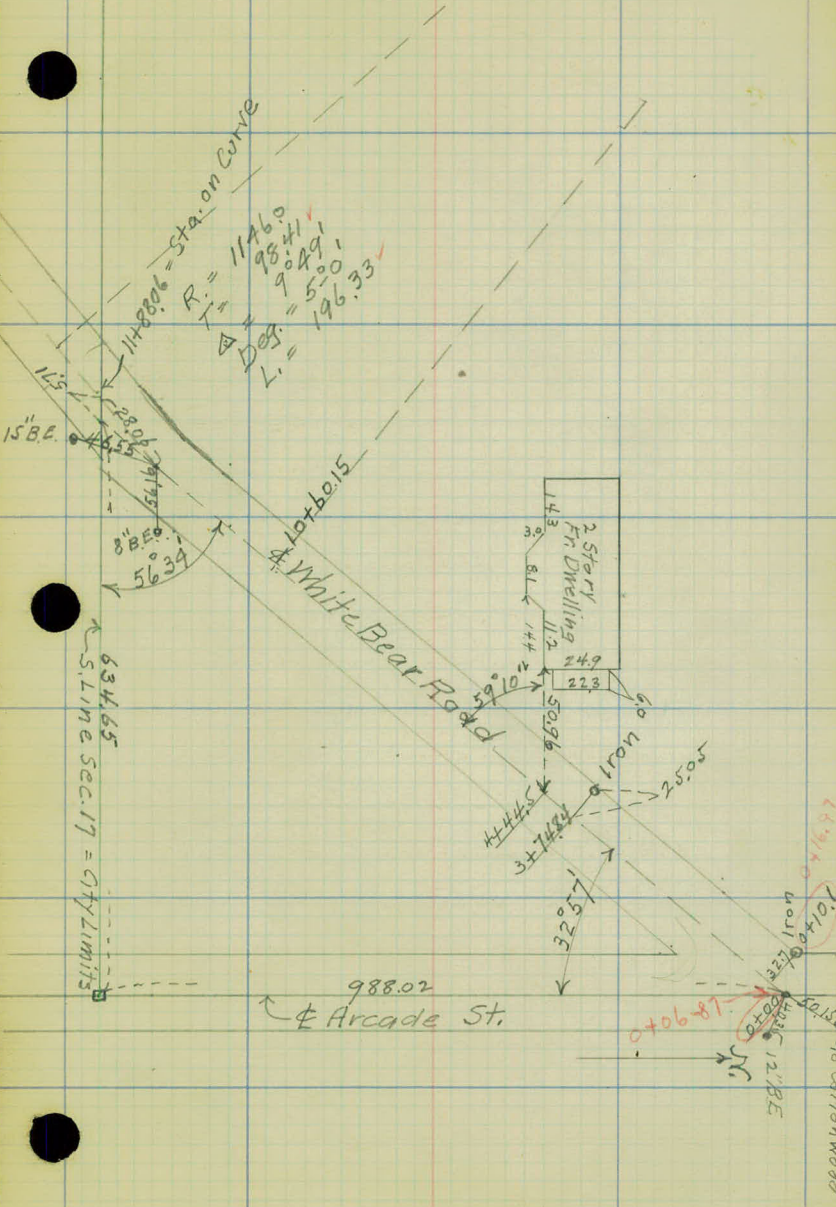
Office of Ramsey Co. Engineer
ST. PAUL, MINN.

Date Filed... 4-21-24

File No. "11"



— Alignment — 24-58



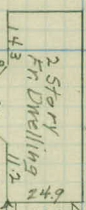
11+880.6 = Sta. on Curve
 $R = 1146.0$
 $T = 98.41$
 $\Delta = 90.49$
 $D = 5.20$
 $L = 196.33$

15' B.E.

8' B.E.
 56.34

634.65
 S Line Sec. 17 = City Limits

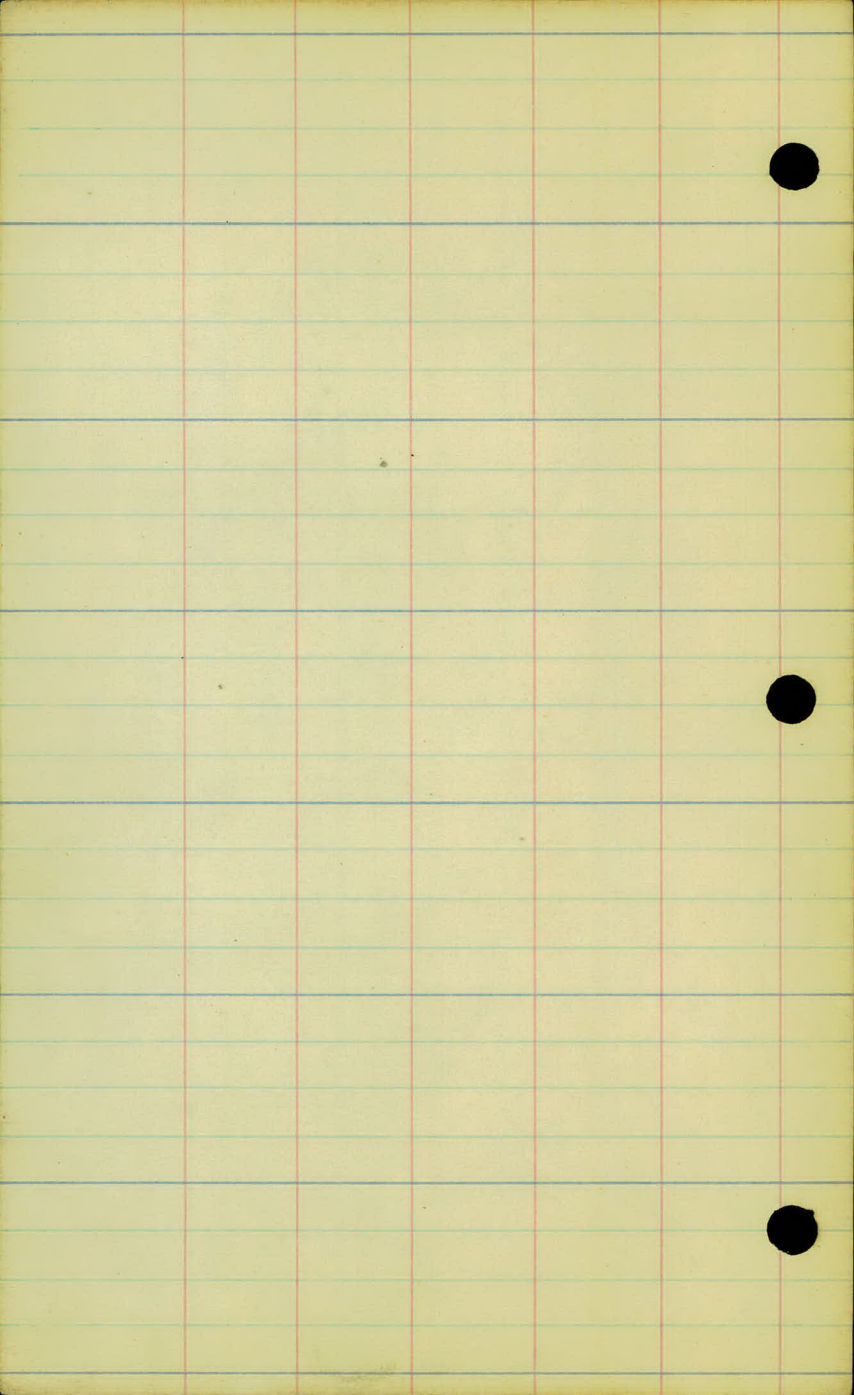
White Bear Road



Iron Nail

988.02
 Arcade St.

10' B.E.
 18.90
 12.5'
 48' Cottonwood

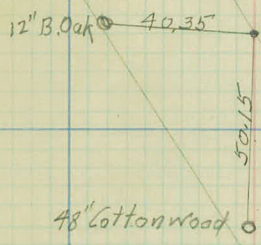


Alignment-24-58

E. White Bear Rd.

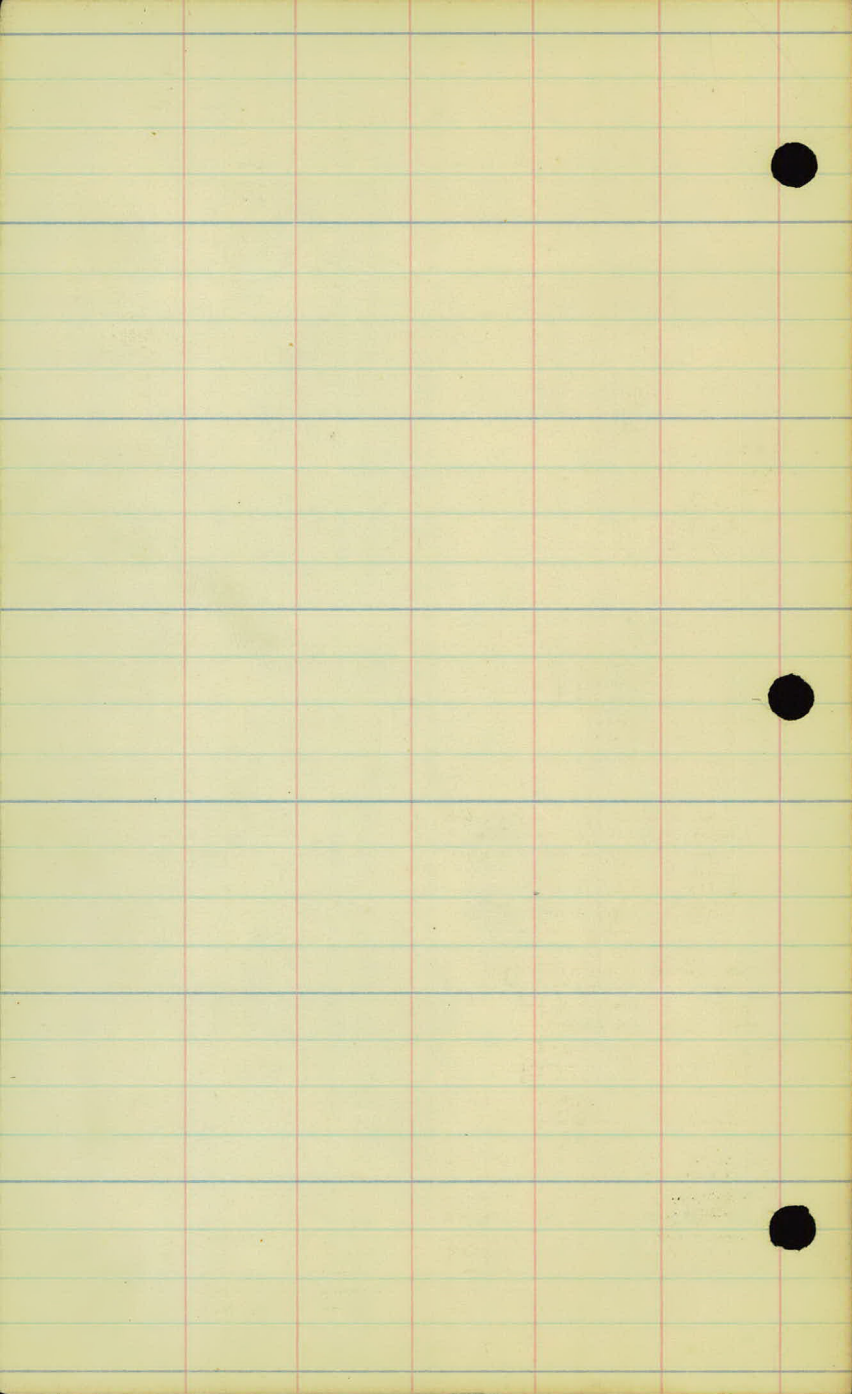
E. Arcade St.
(STH. No. 1)

$\Delta = 32^{\circ} 57'$
 $R = 381.98$
 $T_1 = 112.74$ 113.27
 $Deg = 15^{\circ} 0'$
 $L = 219.67$ ✓



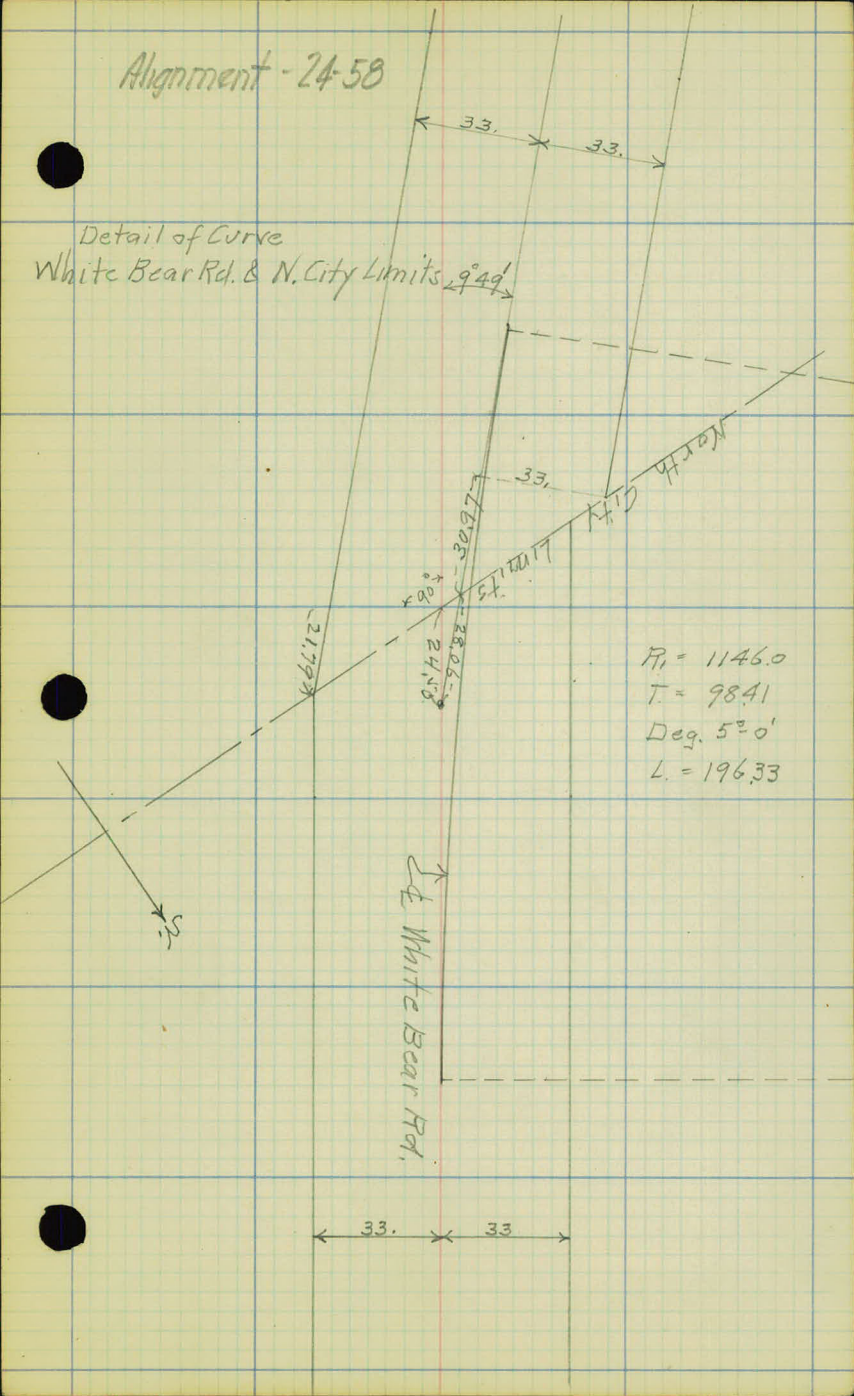
Detail of Curve
White Bear Rd. & Arcade

245



Alignment - 24-58

Detail of Curve
 White Bear Rd. & N. City Limits $\angle 94^\circ$

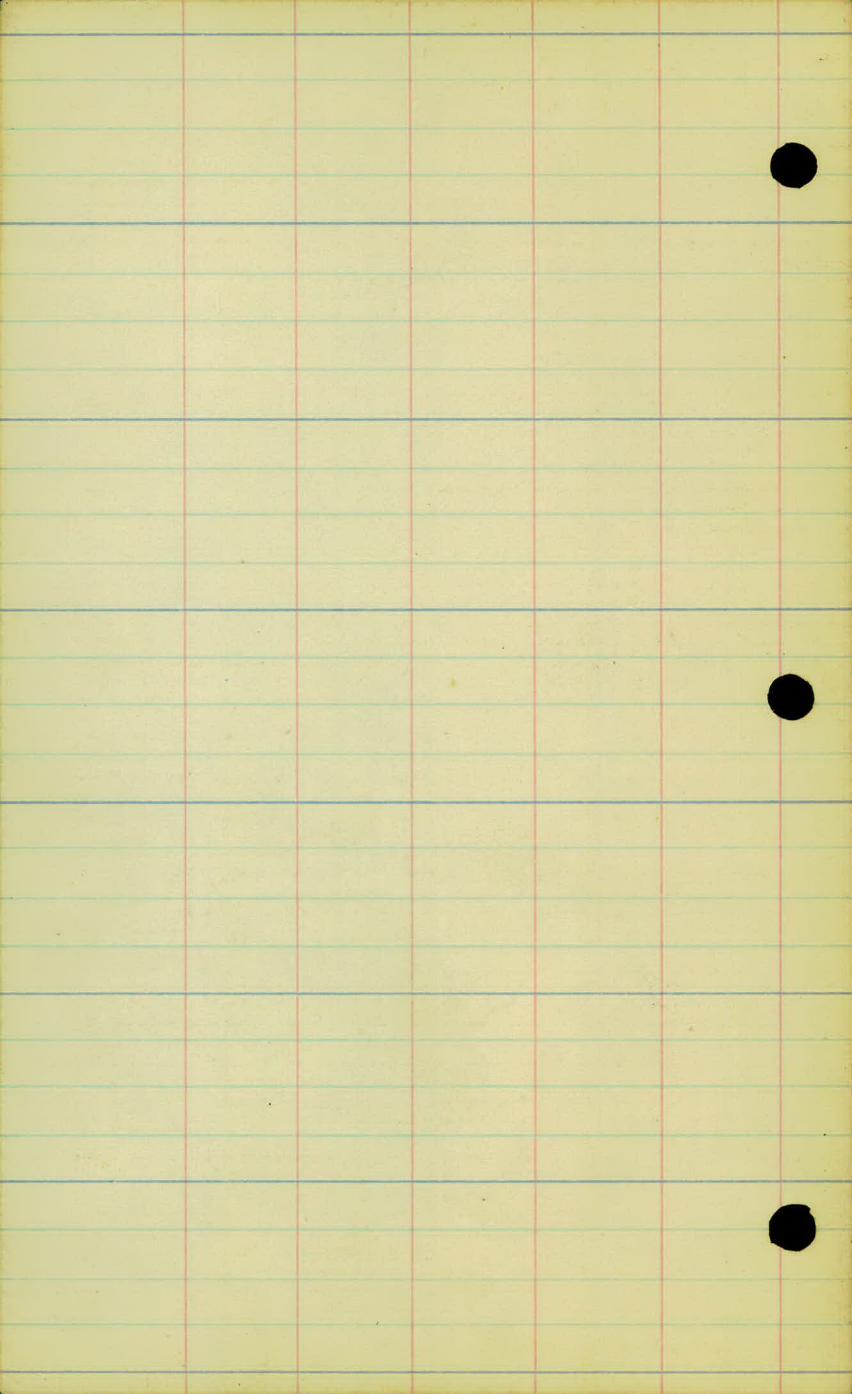


$R_1 = 1146.0$
 $T = 98.41$
 $\text{Deg. } 52^\circ 0'$
 $L = 196.33$

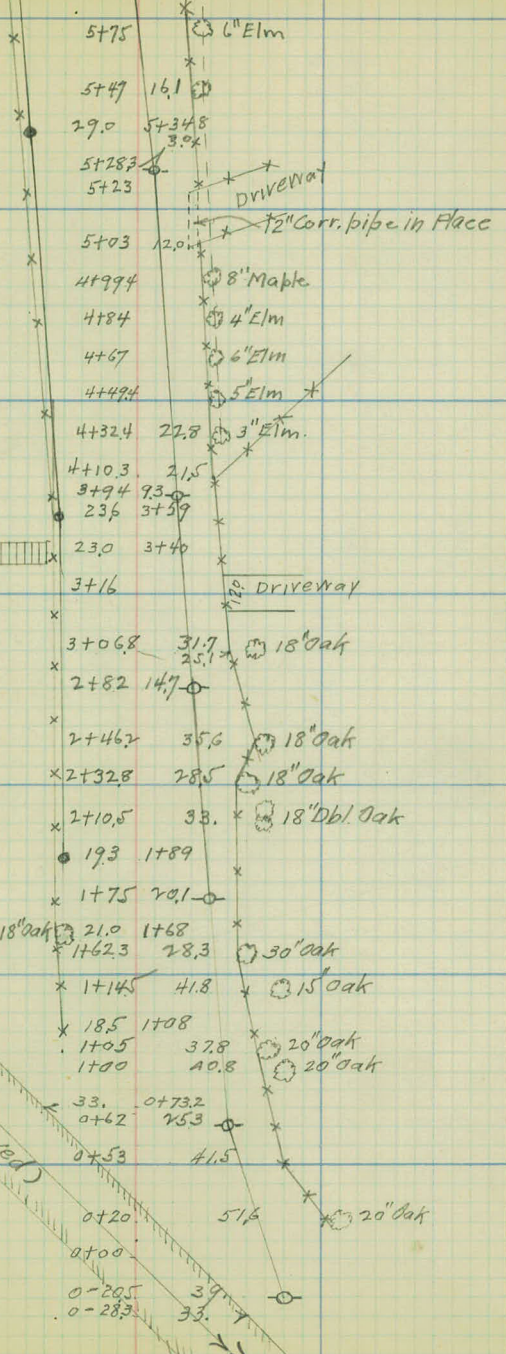
White Bear Rd.


N. City Limits

33. 33



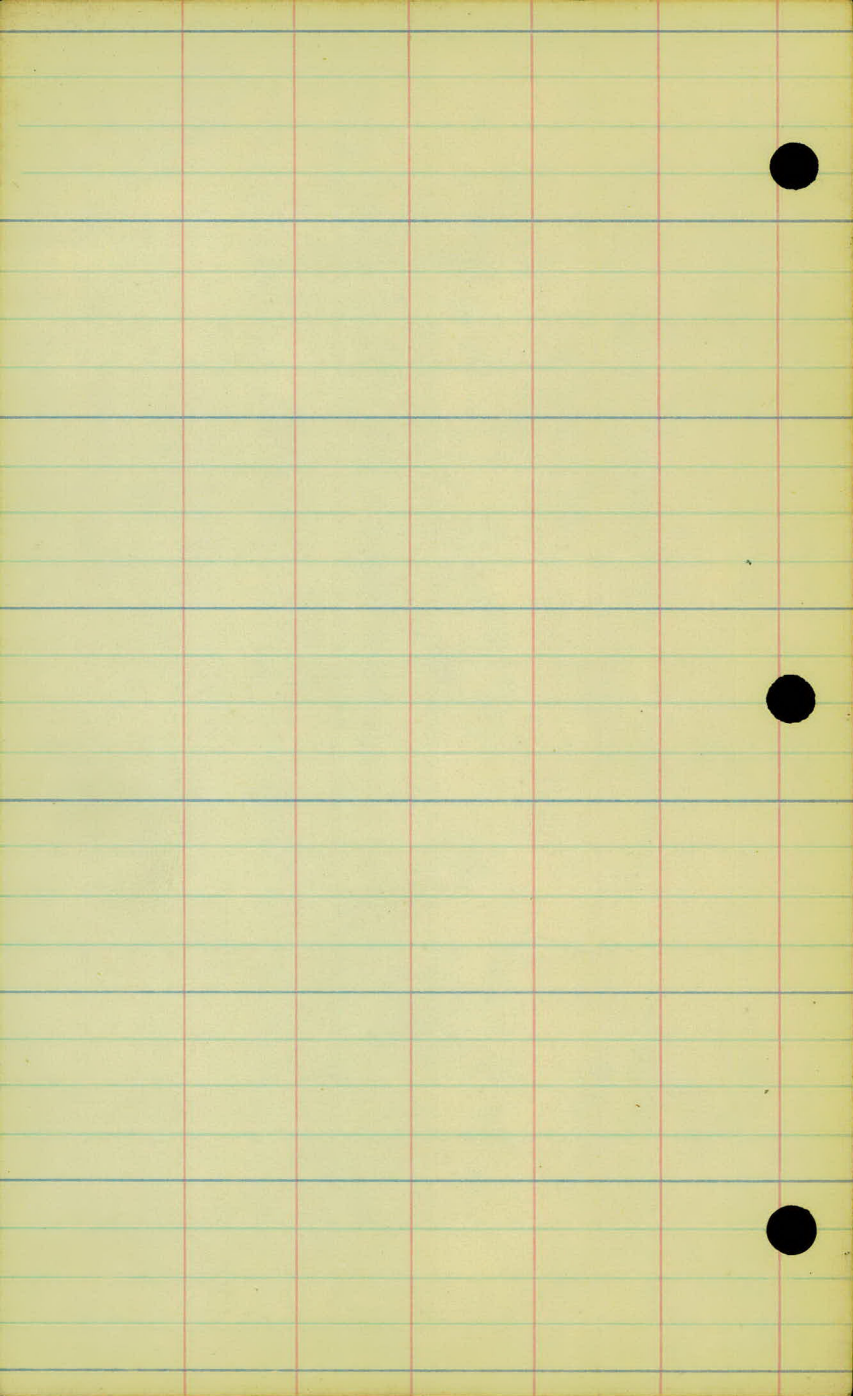
Topog-24-58



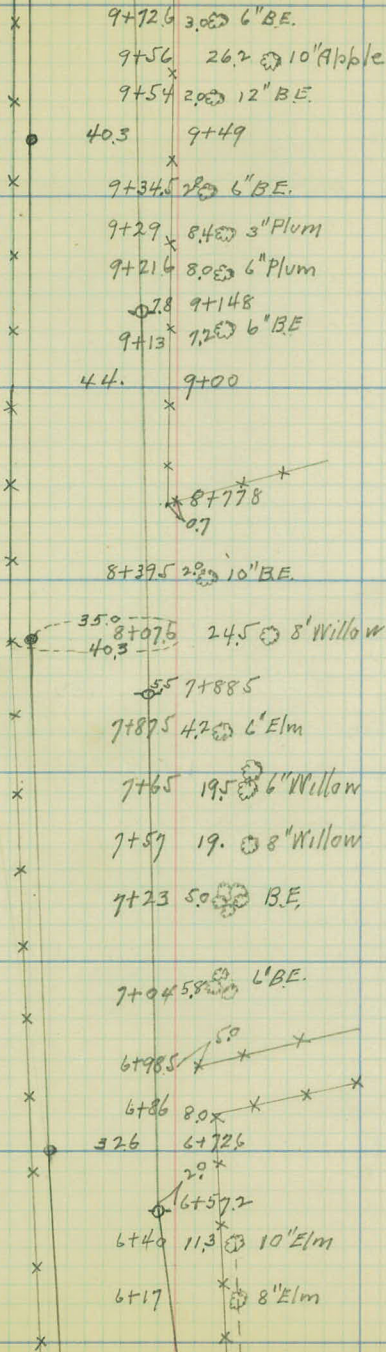
Wooden steps 

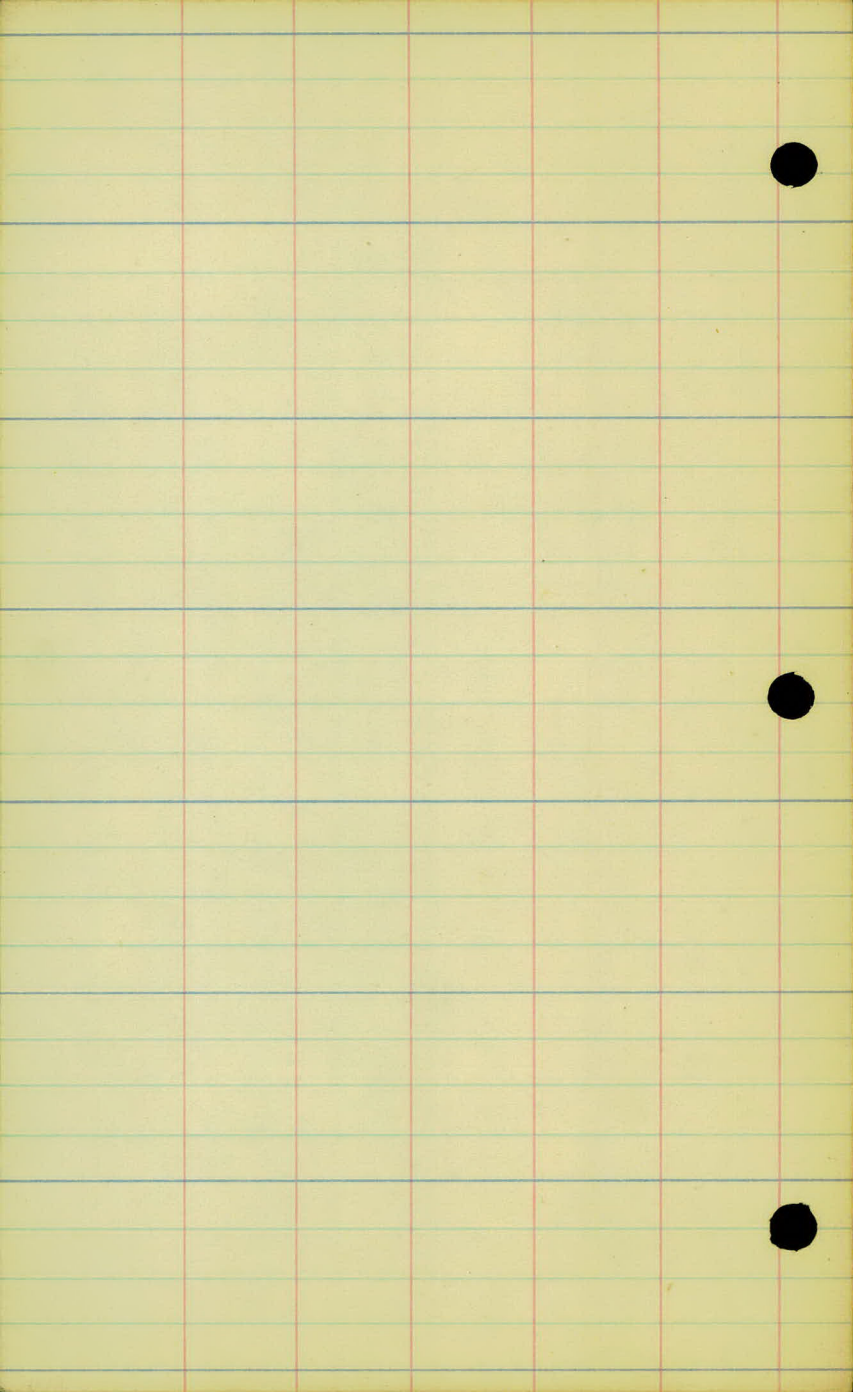
Arcade St (Paved)

5+75		6" Elm
5+47	16.1	
29.0	5+348	3.0%
5+283		
5+23		Driveway
5+03	12.0	12" Corr. pipe in Place
4+994		8" Maple
4+84		4" Elm
4+67		6" Elm
4+494		5" Elm
4+324	27.8	3" Elm
4+10.3	21.5	
3+94	9.3	
236	3+59	
23.0	3+40	
3+16		Driveway
3+068	31.7	18" Oak
	25.1	
2+82	14.7	
2+462	35.6	18" Oak
2+328	28.5	18" Oak
2+10.5	33.	18" Dbl Oak
193	1+89	
1+75	20.1	
18" Oak	21.0	1+68
1+623	28.3	30" Oak
1+145	41.8	15" Oak
185	1+08	
1+05	37.8	20" Oak
1+00	40.8	20" Oak
33.	0+73.2	
0+62	75.3	
0+53	41.5	
0+20		20" Oak
0+00		
0-205	39.	
0-283	33.	



Topog-24-58





Topog-24-58

Sta. 11+88.06
on Curve

370

15" Elm

11+86.6

7.5
15.5

11+70.5 15.4 8" BE

11+59.5 11.4 18" Cottonwood

31.5 11+45

10+96 46.0 8" BE

31.8 10+93

12" Driveway
20'-12" Pipe Needed

10+80

10+77 3.0 15" Elm

10+67 5.5 6" BE Stump

10+57 7.0 18" BE

7.2 10+51.7

10+47.5 4.8 10" Elm

10+28.7 3.5 12" BE

10+15.7 20.5 3" Apple

10+13 16.0 3" Plum

10+09 2.7 6" BE

10+01 2.96 10" BE

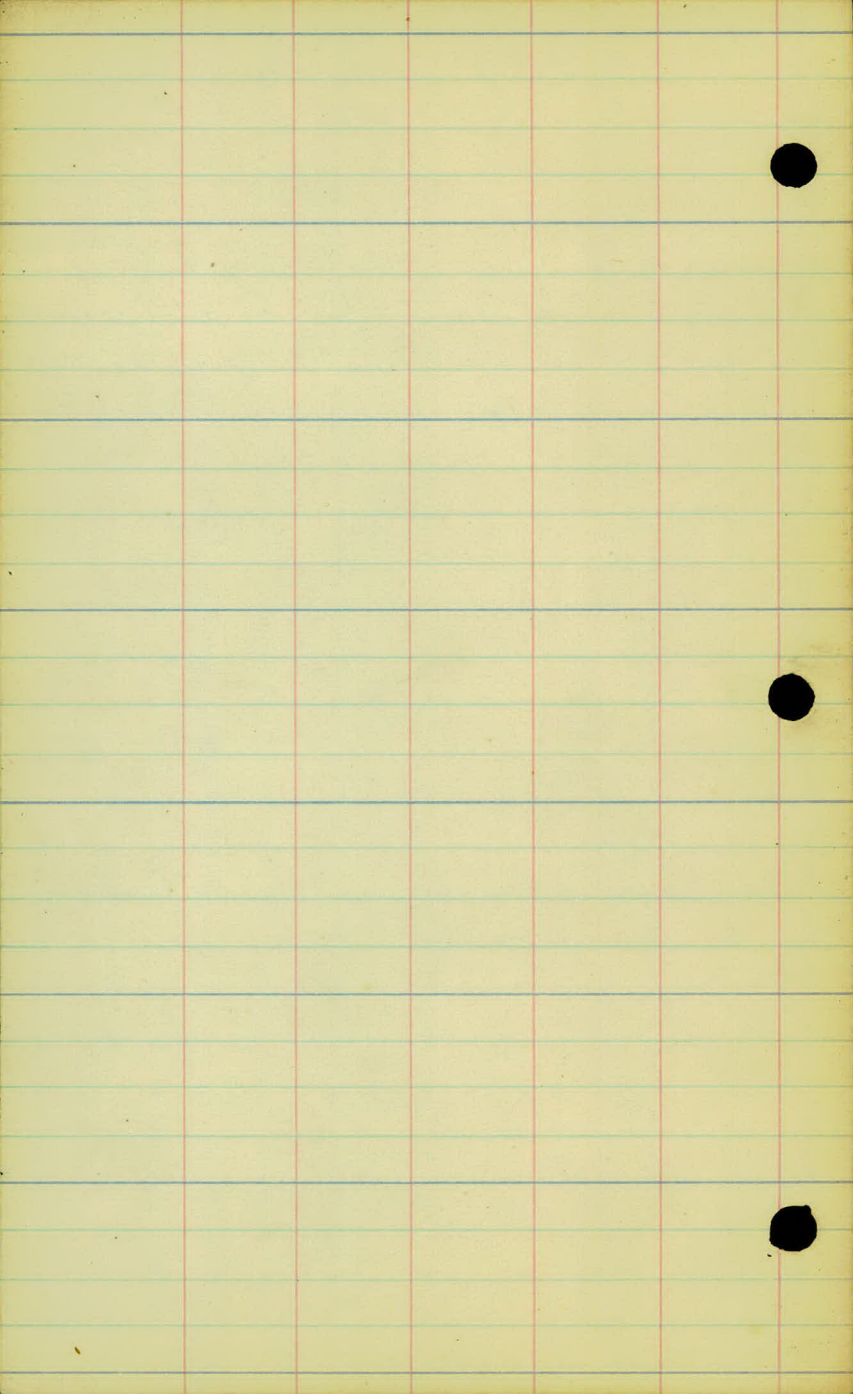
43. 10.6 5" Hum

9+91 2.4 6" BE

10+00

Driveway
18'-15" Pipe Needed

City Limits
Driveway



Proj 24-58

Levels & X-Sections

5.5 ✓	191.30 ✓		185.78 ✓
0.15	186.03 ✓	5.42	185.88 ✓
5.55	184.05 ✓	7.53	178.50 ✓
8.72	190.55 ✓	2.22	181.83 ✓
8.66	198.11 ✓	1.10	189.45 ✓
		6.16	191.95 ✓

Apr. 17-24 (Rain)

Holterhoff

Weber

Smith

3 Nails in T.P. - N.W. Cor. California + Wh. Bear Rd.

" " " " Larpenteur " " "

3 Nails in T.P. - S.W. Cor. Arcade + Wh. Bear Rd.

6.16 198.11 ✓

191.95 ✓

0-28.3

0+00

E. Arcade

92.9

+73.2

90.9

1+00

90.1

+50

89.6

2.46

191.91 ✓

8.66

189.45 ✓

2

88.1

+50

86.7

3

85.3

+50

84.2

+92

83.0

4

82.9

+50

81.8

7.04

183.86 ✓

10.09

181.82 ✓

5

80.0

7.36

181.50 ✓

L.

R.

3 Nails in T.P. - SW, Cor. Arcade

$$\begin{array}{r} 4.2 \\ \hline 33 \end{array} / 93.9$$

				5.2	5.2	5.3	5.4	3.5	0.6	0.8
					—	—	—	—	—	—
					1.4	3.3	4.3	5.1	6.5	10.0
	7.6	7.2	7.2	7.3	7.8	8.1	7.5	5.8	6.3	8.0
	—	—	—	—	—	—	—	—	—	—
	3.3	13.5		13.5	2.3	3.3	3.7	4.0	7.2	10.0
9.7	8.0	7.9	8.0	8.1	8.5	8.9	7.7	9.3		
—	—	—	—	—	—	—	—	—		
3.3	2.0	13.5		13.5	2.2	3.3	3.7	7.0		
9.4	9.2	8.7	8.5	9.3	10.9	10.3	11.1			
—	—	—	—	—	—	—	—			
3.3	13.5	1.1		13.5	7.5	2.8	3.3			
1.7	2.0	4.3	4.0	3.8	4.4	6.0	7.3			
—	—	—	—	—	—	—	—			
3.3	2.9	2.0	13.5		13.5	2.6	3.3			
1.8	2.1	5.6	5.1	5.2	5.6	6.3	7.6	9.2		
—	—	—	—	—	—	—	—	—		
3.3	2.9	2.0	13.5		10.8	13.5	2.6	3.3		
	2.3	5.4	6.4	6.6	6.9	9.8	8.7	10.4		
	—	—	—	—	—	—	—	—		
	3.3	2.6	13.5		8	13.5	2.5	3.3		
	1.6	7.8	7.6	7.7	8.4	9.2	9.0	8.0	8.6	
	—	—	—	—	—	—	—	—	—	
	3.3	2.1	13.5		1.1	13.5	2.2	2.5	3.3	
0.3	4.8	7.8	9.0	8.8	8.9	9.7	10.0	10.0	7.1	
—	—	—	—	—	—	—	—	—	—	
4.0	3.3	2.6	1.9	13.5		2	13.5	2.5	3.3	
0.0	4.9	7.2	8.9	9.0	9.0	9.3	10.2	10.4		
—	—	—	—	—	—	—	—	—		
4.2	3.3	2.9	2.3	13.5		3	13.5	3.3		
3.1	9.1	10.3	10.0	10.0	10.1	10.4	11.5	11.6	11.5	10.7
—	—	—	—	—	—	—	—	—	—	—
4.2	3.3	2.7	2.0	13.5		3	8	13.5	1.7	1.9
0.3	1.3	3.4	2.9	3.1	3.9	5.1	4.3	4.8		
—	—	—	—	—	—	—	—	—		
3.5	3.3	2.9	2.2	13.5		13.5	1.7	3.3		

W.T. - SW Cor. of House #1253 White Bear Rd.

183.86 ✓

5 + 35

78.0

6

76.3

+ 50

73.7

1.88 180.25 ✓ 5.49 178.37 ✓

7

73.7

+ 50

71.4

8

70.7

+ 50

75.2

+ 90

78.6

7.85 187.22 ✓ 0.88 179.37 ✓

9 + 40

83.9

+ 65

84.7

1.96 187.75 ✓ 1.43 185.79 ✓

10

83.0

+ 50

80.6

11

81.4

43 43 38 38 39 59 65 71 66 75

33 27 22 135 6 6 11 135 33

126 94 51 49 53 76 85 96 114

41 33 25 135 3 11 135 33

143 94 51 53 66 102 103 111 126

45 33 28 135 4 8 135 33

78 49 23 18 21 66 92 95 108

39 33 29 135 9 135 26 33

88 37 23 22 23 89 110 113 113 102

39 33 31 135 10 7 135 30 33

67 23 21 21 96 107 105

41 33 135 12 135 33

43 24 20 21 41 51 63 60 66 78

43 33 135 11 7 5 8 135 33

28 17 17 30 20 17 24 31

33 135 7 4 135 33

85 79 82 86 33 34 33

33 135 9 135 33

77 76 75 80 25 22 16

40 33 135 10 135 33

74 74 80 50 48 48 31

33 135 7 2 135 33

68 65 65 75 72 75 70

33 30 135 4 135 33

55 52 64 51 57 64

33 135 4 135 33

187.25 ✓

11 + 58

83.3

+88.06

City Limits

83.7

12 + 17.16

83.8

39 42 41 45 57 83

33 29 135 135 33

41 42 77 83 107

3 10 135 33

49 42 91 109

4 135 33

Arcade St White Bear Rd. - North 300'

1035 20250 ✓ 191.95

0+00

+ 53 194.4

1 195.9

11.80 209.08 ✓ 522 197.28 ✓

+ 50 197.3

2 199.1

+ 50 201.2

7.69 213.85 ✓ 292 206.16 ✓

3 203.6

100 Trees

96 55 49 50 88 81 81

150 100 60 39 30 18

41 32 25 35 7.7 6.7 6.6

200 150 100 37 26 18

6.5 48 65 98 128 117 118

200 144 100 34 28 18

40 93 36 76 87 107 98 100

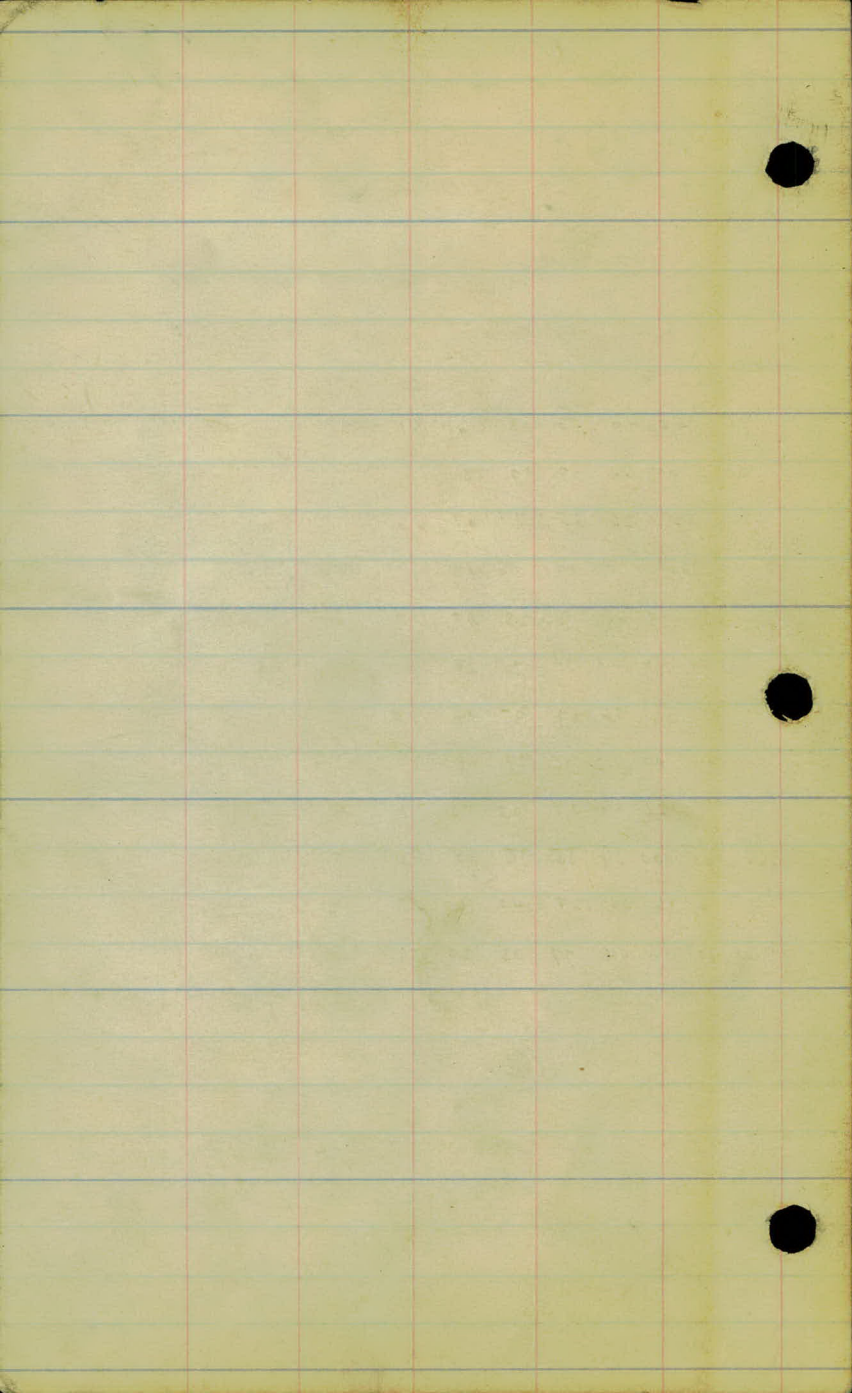
200 155 100 65 35 29 18

21 68 7.7 103 78 29

$\frac{2086}{200}$ $\frac{2108}{155}$ $\frac{100}{100}$ $\frac{39}{39}$ $\frac{35}{35}$ $\frac{26}{26}$ $\frac{78}{78}$

4.4 30 36 100 127 142 100 103

200 190 150 100 77 33 20



U2471