

2463

24-53

12-Pages

Lake Ave.

Project 2453

Ties to Monuments at

Lake Ave and Stewart	Page	2
" Moorhead	"	3
" 4th St.	"	3
" bet. 4th + 5th	"	4
" and 5th St.	"	5
" bet. 5th + 6th St.	"	5
" and 6th St.	"	6
" " 7th St.	"	7
" " 8th St.	"	8
" " 9th St.	"	9
" " 10th St.	"	10
" " 11th St.	"	11
" " 12th St.	"	12

Office of Ramsey Co. Engineer

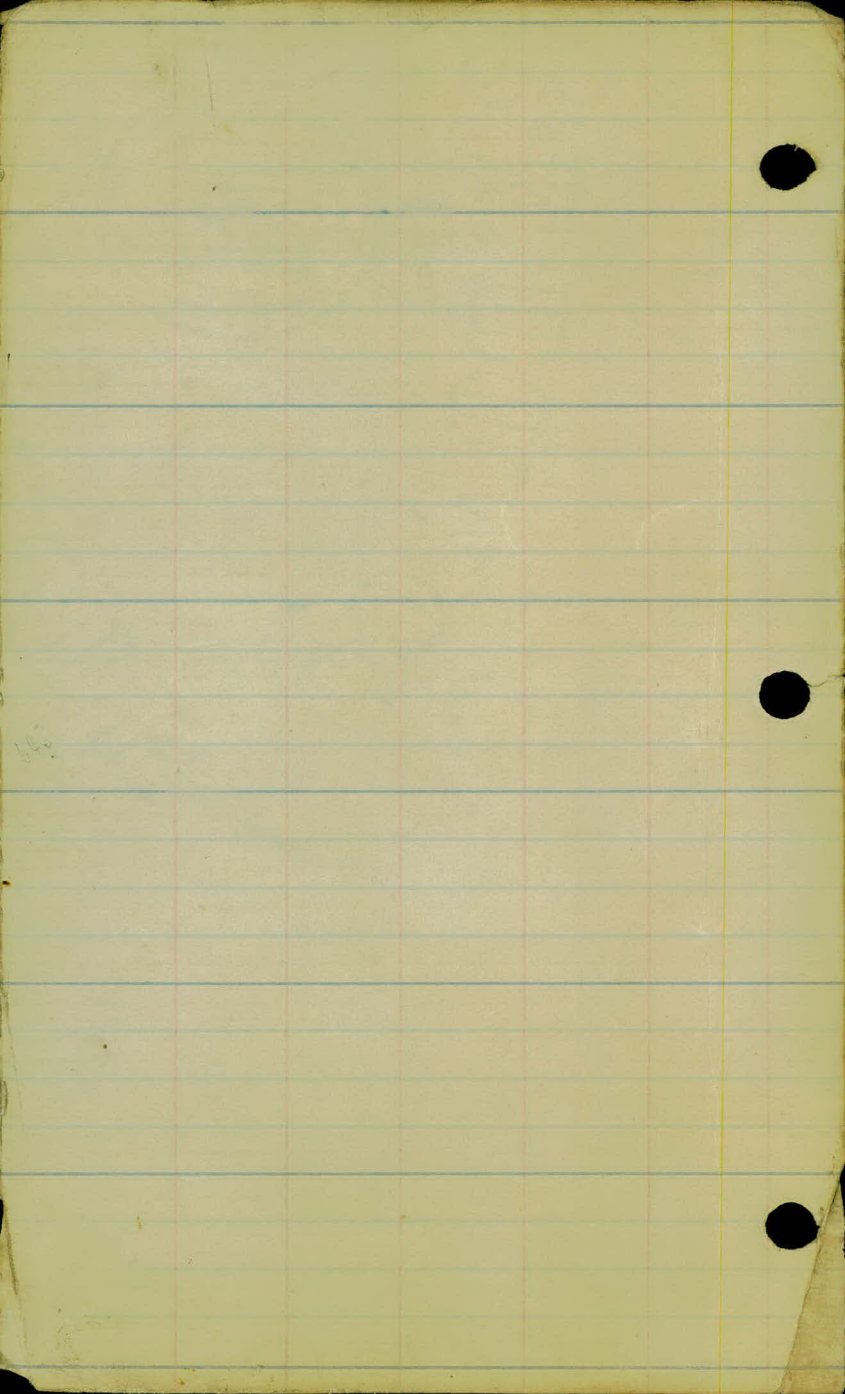
ST. PAUL, MINN.

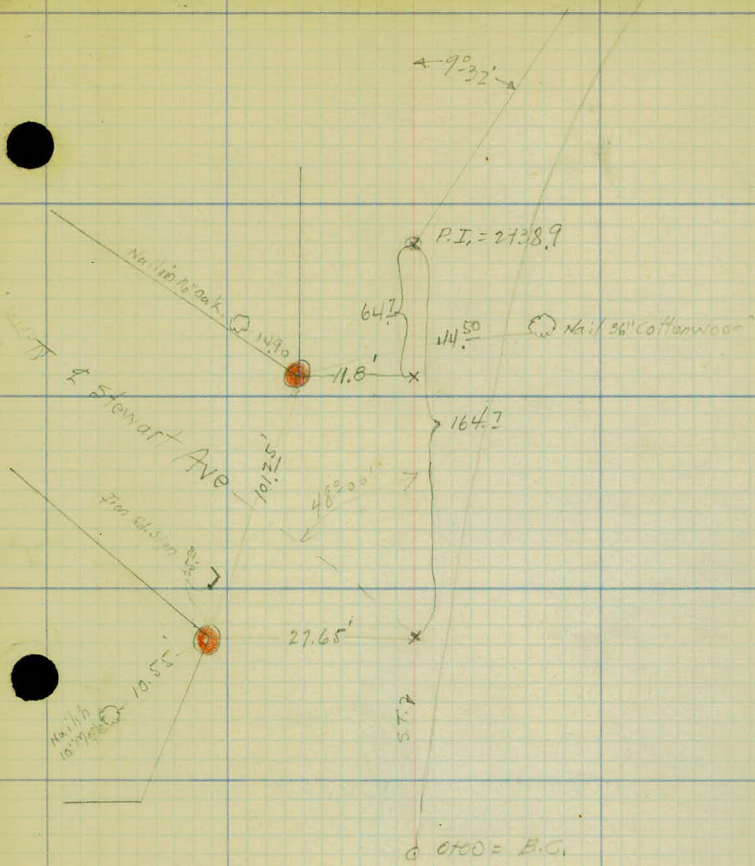
Date Filed 2-13-24

File No. "11"

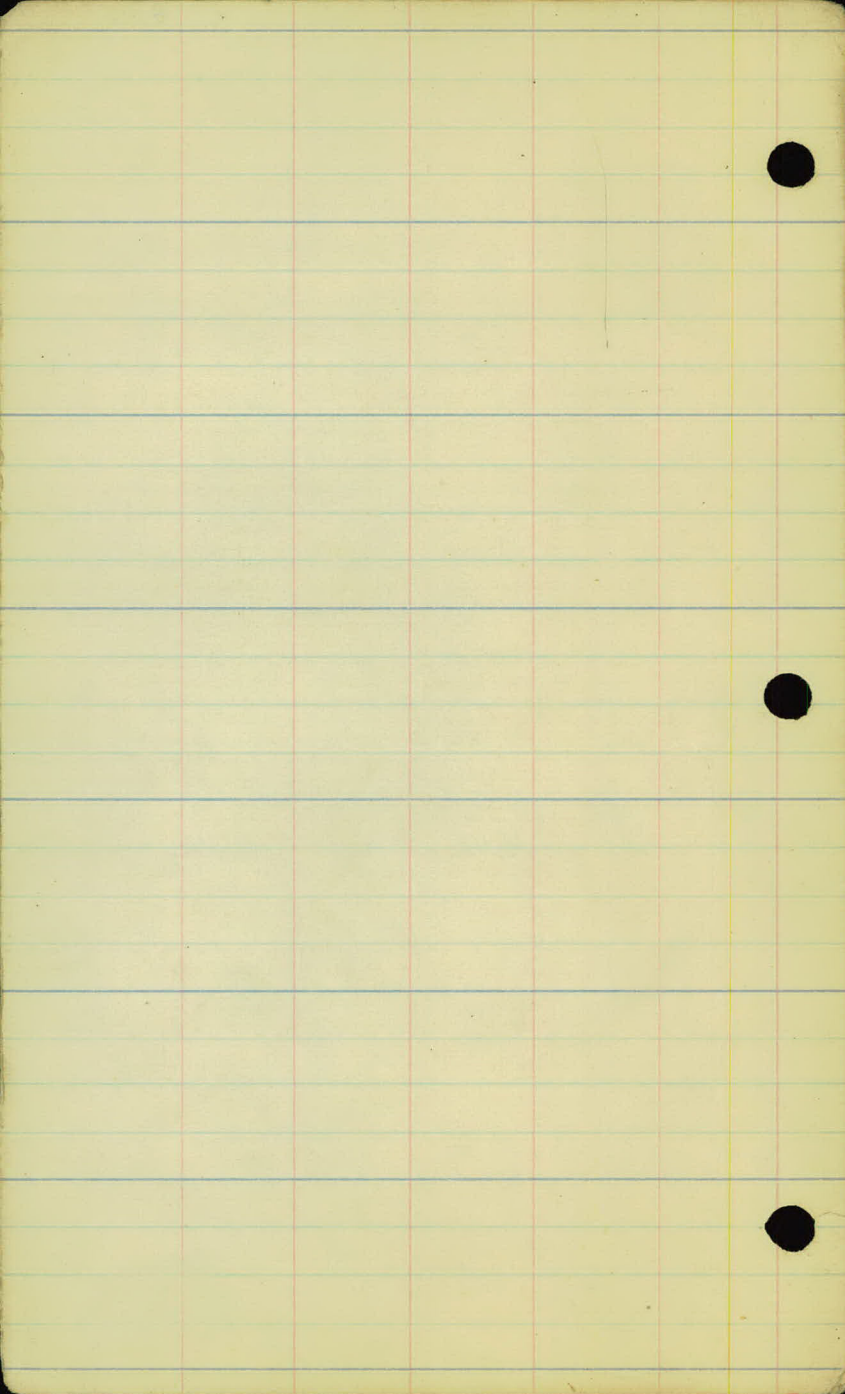
"24-53"

Dellwood Conn.





W.H.C.
 G.E.J.
 M.S.A. } 3/3/24
 T.F.





B/K. 47
Nail in 30" oak

59.67

Stone Mark.

15.1

x 13+22.8 P.C.

x 12+04

Johnson St.

44th St.

Nail in 12" oak

22.5

Nail in 30" oak

24.8

x 10+19.1

Nail in 18" oak
B/K 57

Nail in 14" oak

32

9.98

32.55

22.9

PI 6+28

57.25

Moorhead St.

St. 2

Nail set in by O.

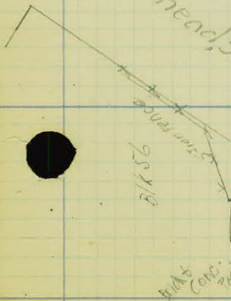
4460

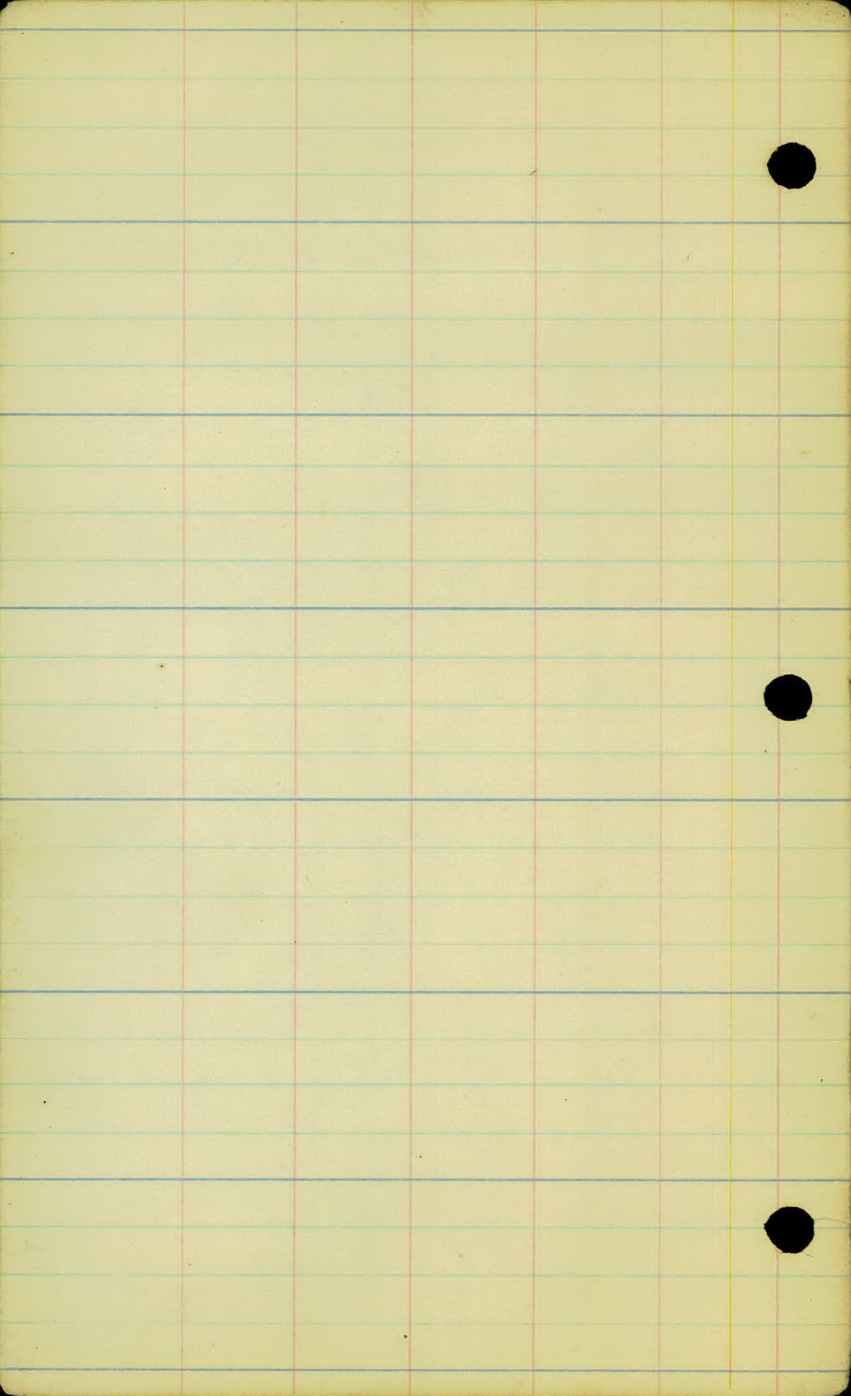
Nail in 14" oak

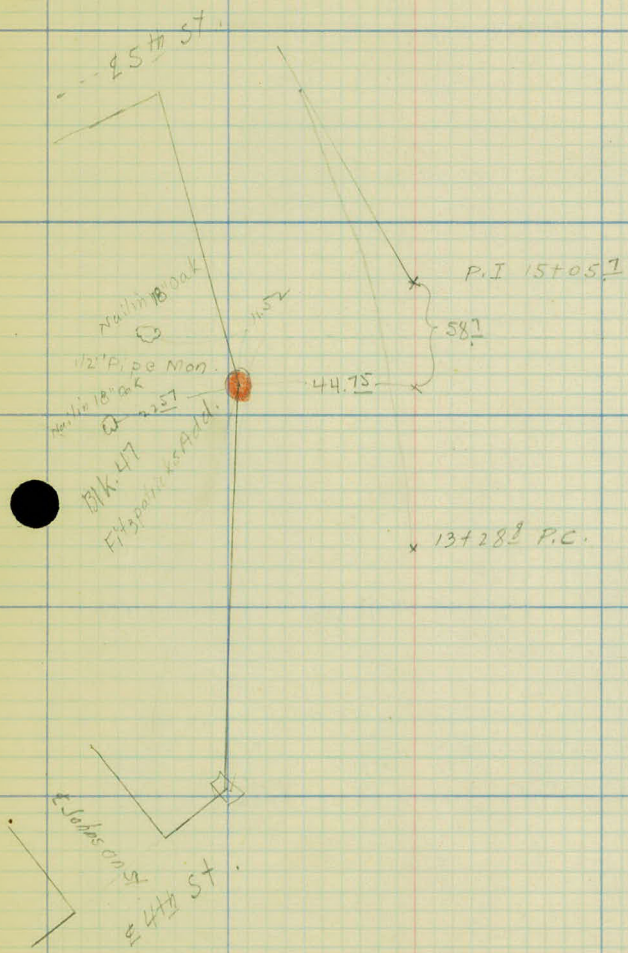
34A

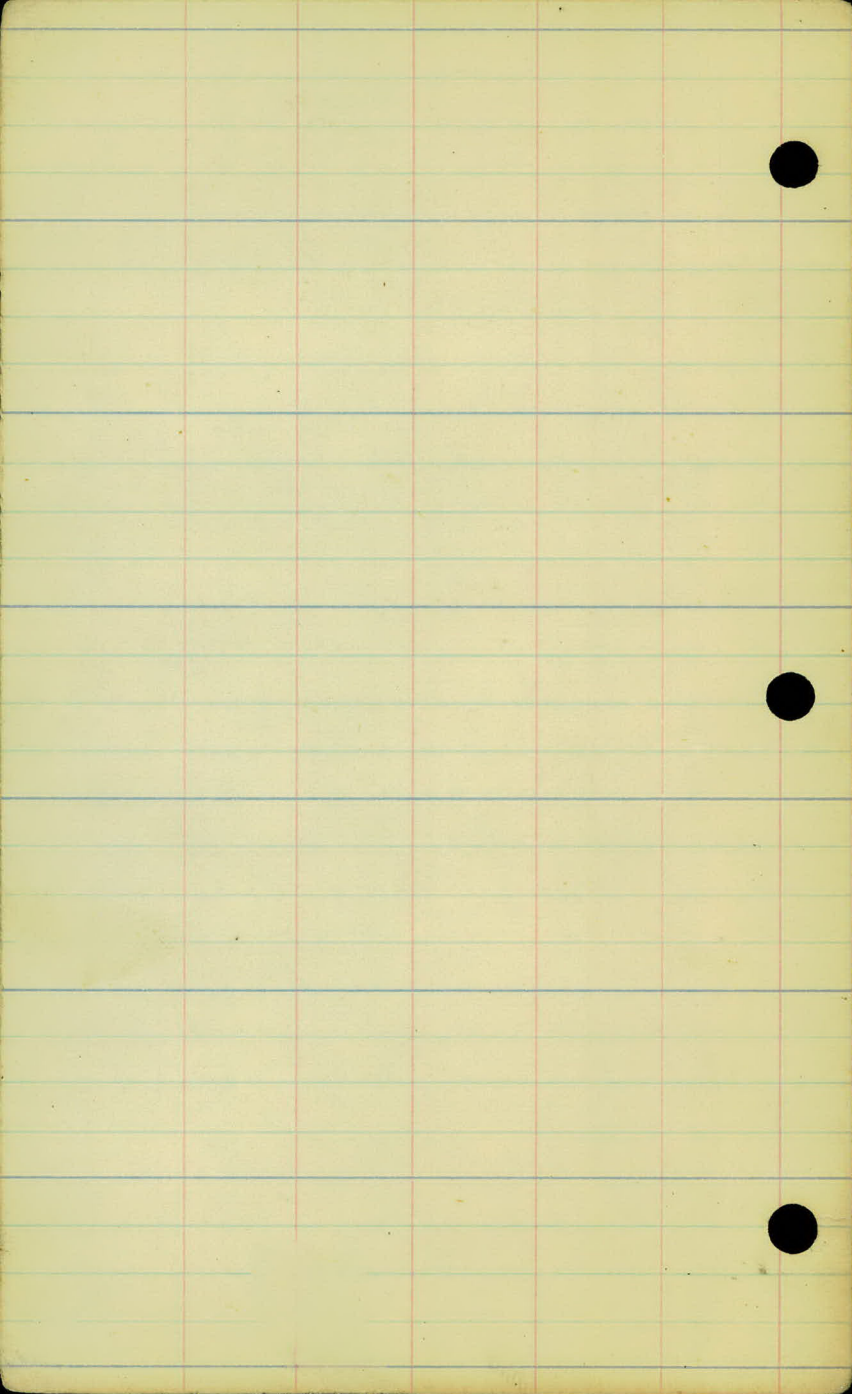
0.97

10' x 10' CONC. 2' x 4'

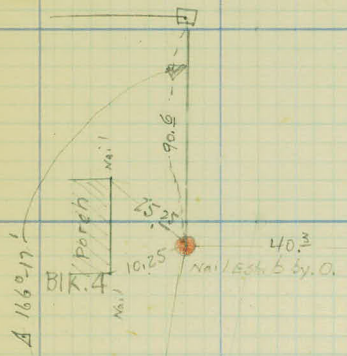








2-6±11 St.



x P.I. 20+35

x P.C. 19+90.1

x 19+37.6

40.3

Nail 5 ch. 6 by 0.

B.K. 4

porch

nail

25.25

10.25

nail

nail

Δ 166° 17'

pottery

3.55

Iron
Rail Man

--- 29.15 --- x 17+22.3

○ 48.4

2-5±11 St.

79.5

6.2

1/2 P. Iron Man

x P.T. 16+69.4

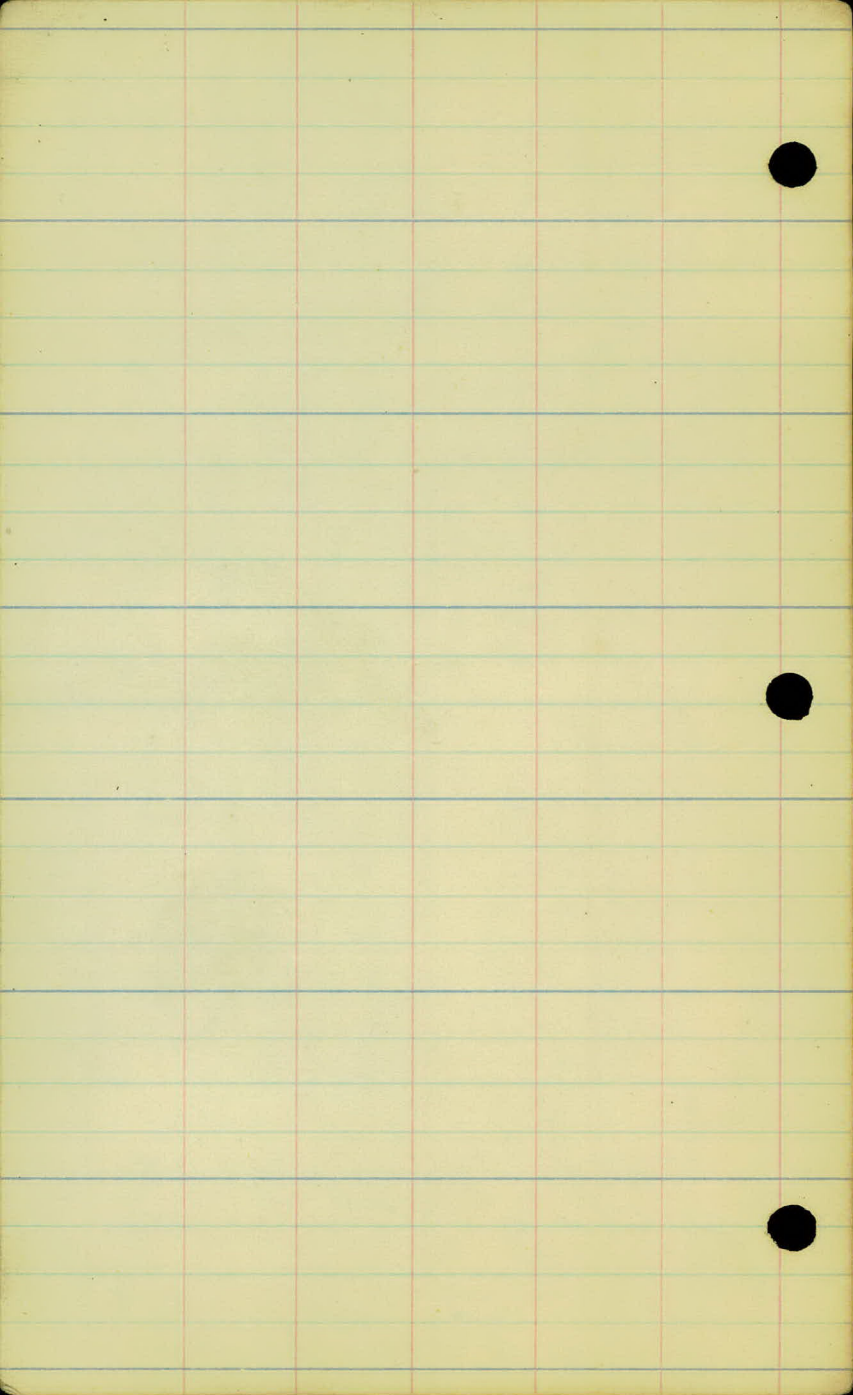
30.3

555 ○ Nail in 14" Oak

Entrapments
2001

166.8

x P.I. 15+05.7



Blk. 33

Nail in 10" Maple

2" Iron Mon.

26.58

499

x 21+11.6

27.61

498

2 6th St.

11.76

20.02

x P.I. 20+78.2

Iron Mon.

Blk 46

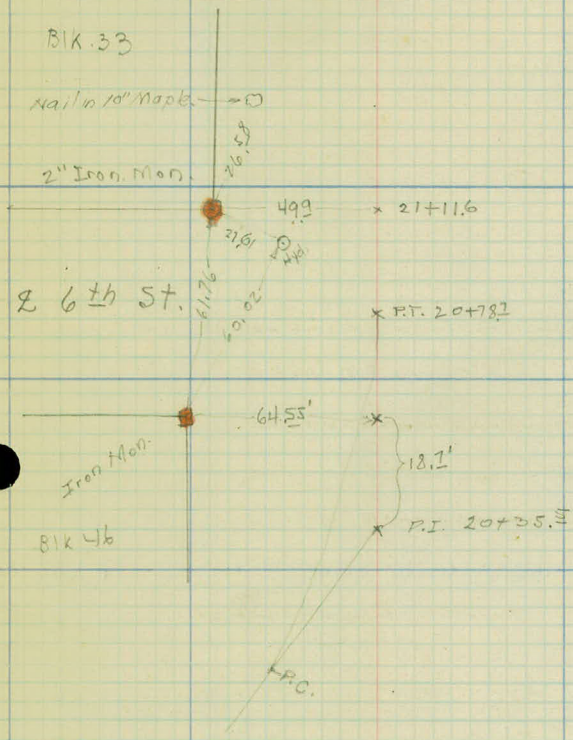
64.55'

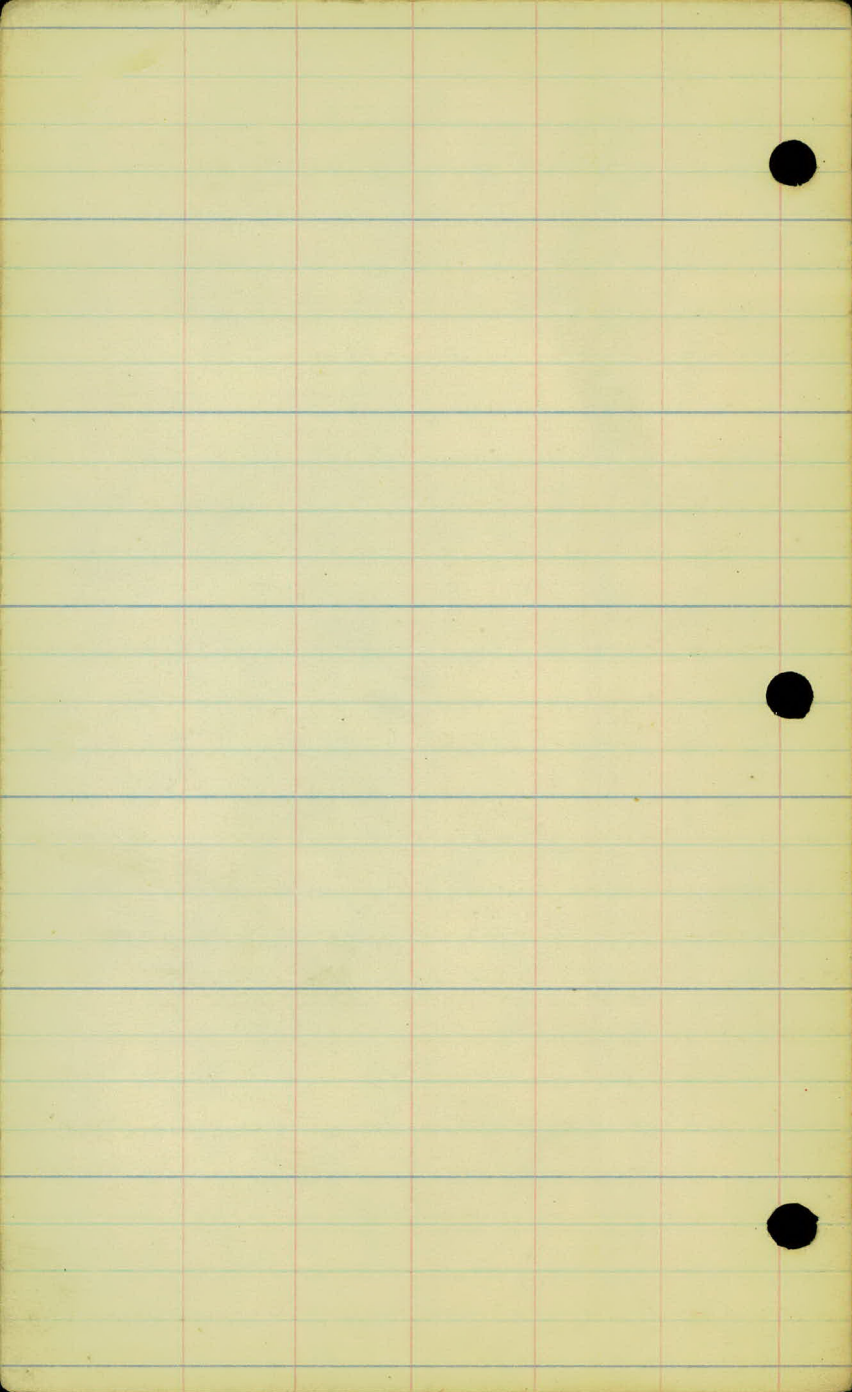
x

18.1'

P.I. 20+35.4

P.C.





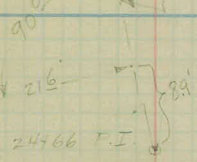
W.H.C.
C.E.J. } Feb 2, 24
E.H.R.
T.F.]

244995 P.T. 9

BK 35

24" Twin Oak

24" Oak



R 7th St

61.25

IRON MON.

244325 P.C.

16.4

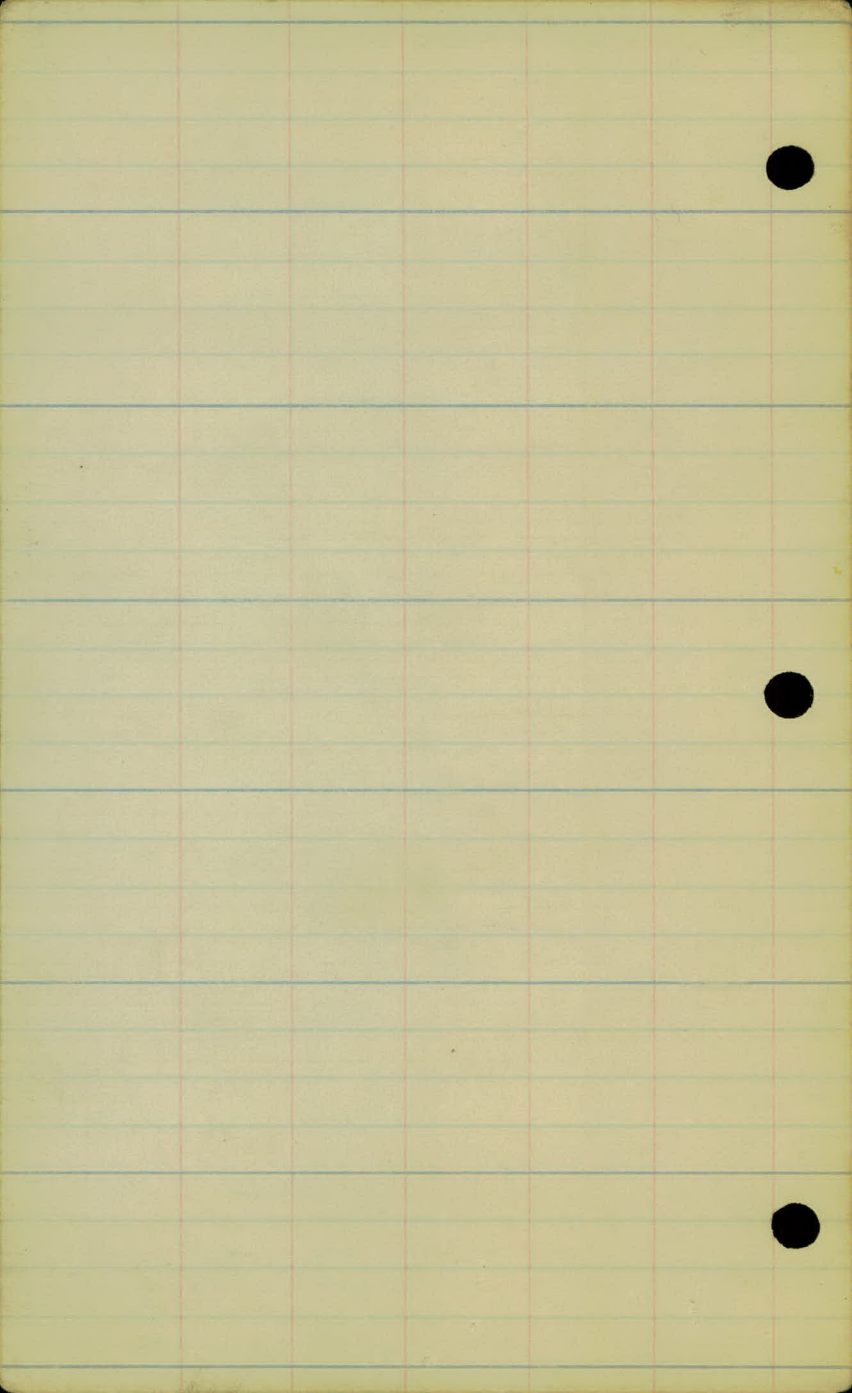
x 244132

54.3

Conc. Found

BK 33

Nail Embedded
2/1/24



27+21.6 P.T. ⊙

Nail in F.P.
Walk

15 ft
SW

Nail established by
Osterhoff
R. Hlotterhoff

18.75
6.3

Nail in P. Pole

72.55' from P.I.

27+17.8 P.I. ⊙

--- 2 8th St. ---

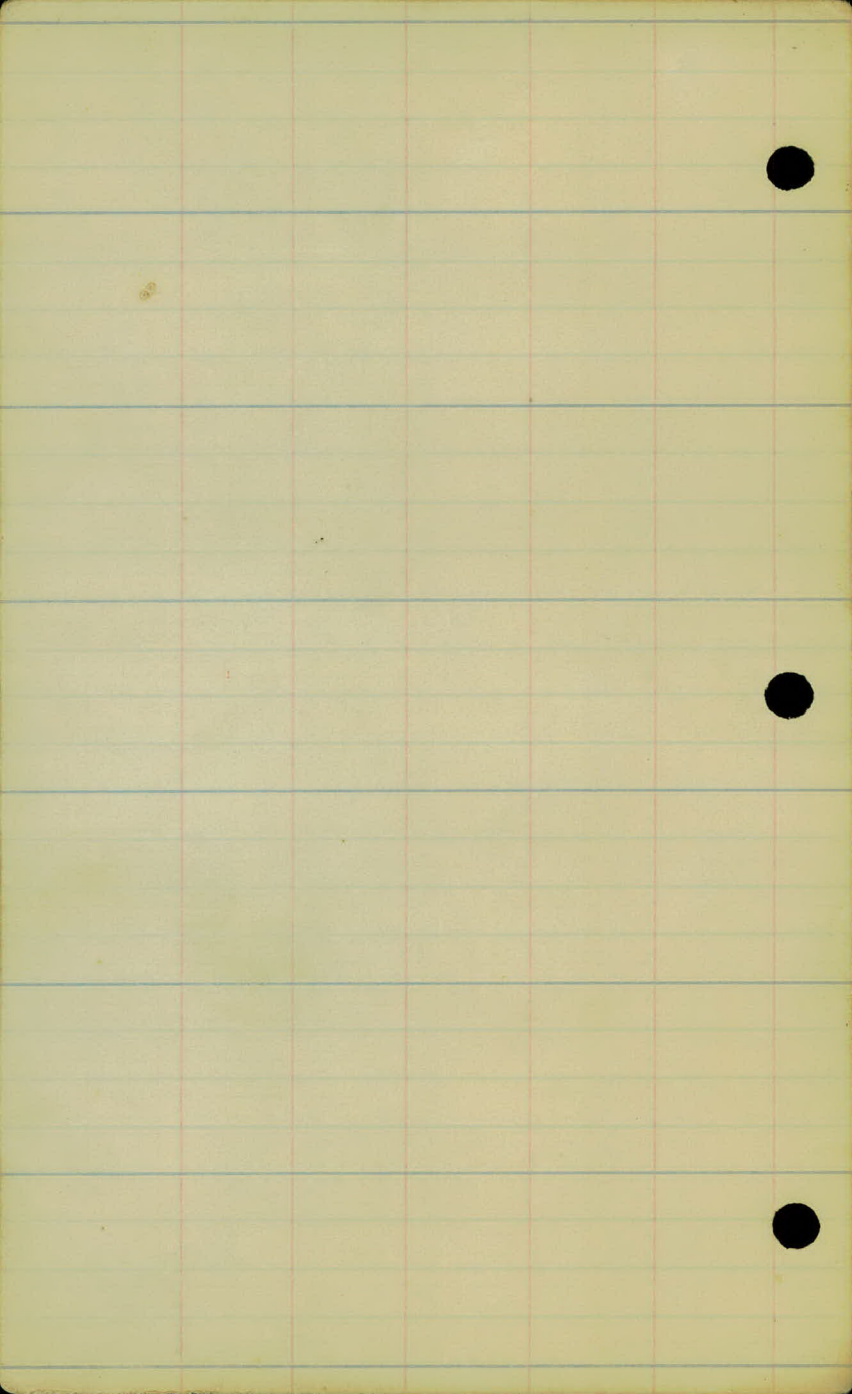
Iron Mark.

27+78.5

12" Oak. ⊙

15 ft
SW

27+13.8 P.C. ⊙



33+52

10.50

P.T. 33+38.1
2" Iron

76.40'

32+42.6 P.I. ⓪

conc wall

34.3'

32+02.9

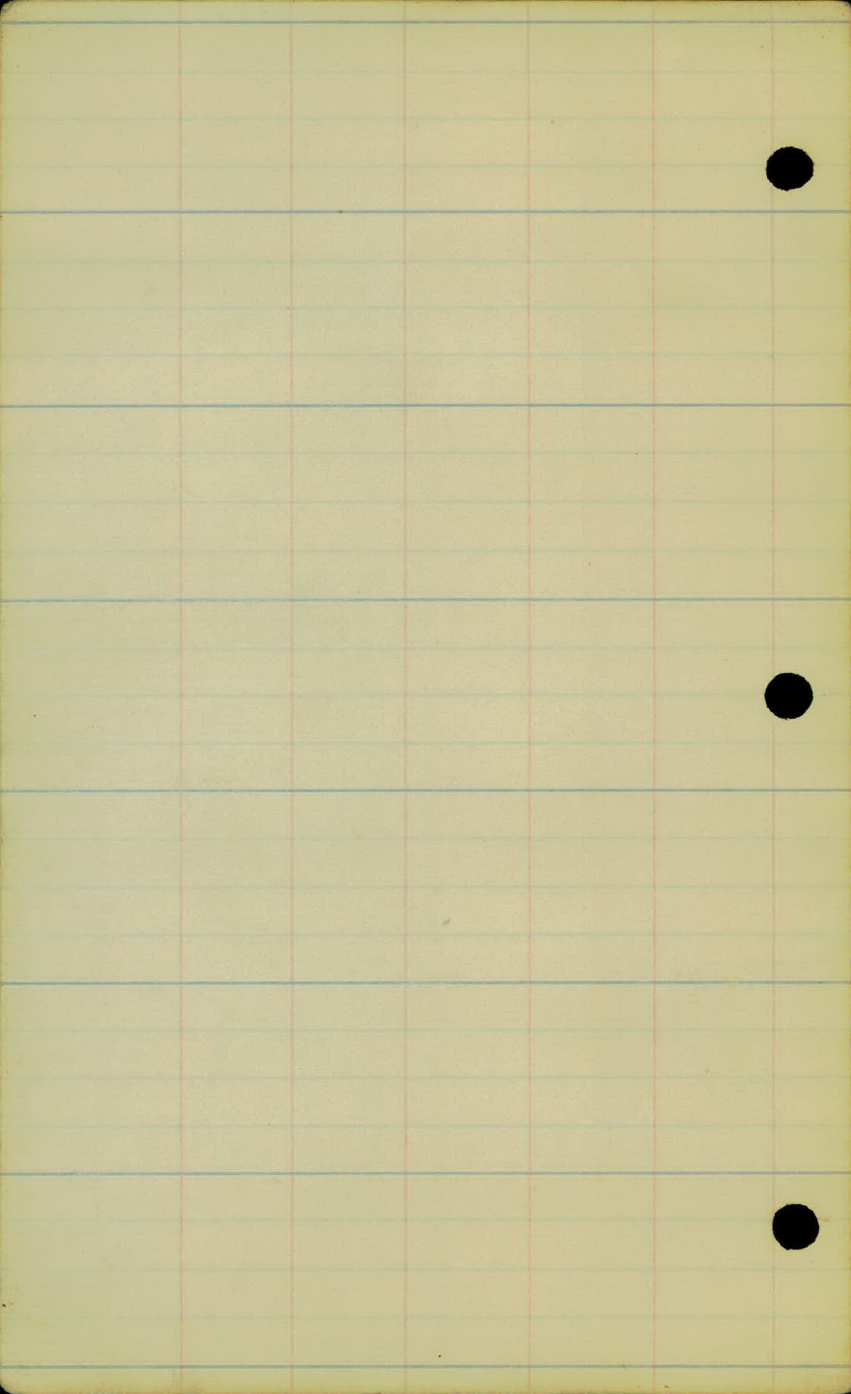
2" Iron Mon.

35.5'

S.T. 2

Nail in 10" Oak
9th ST.

31+46.15 P.C. ⓪



37477.8 P.T. (10)

36721.4 P.I. (6)

35764.95



Nail established by Odenhoff

--- E 10th ST.

S.T. 7

35705.10



21.2 (1) Nail in 12" Oak

2" Iron Mon. (1' Below)

40.9

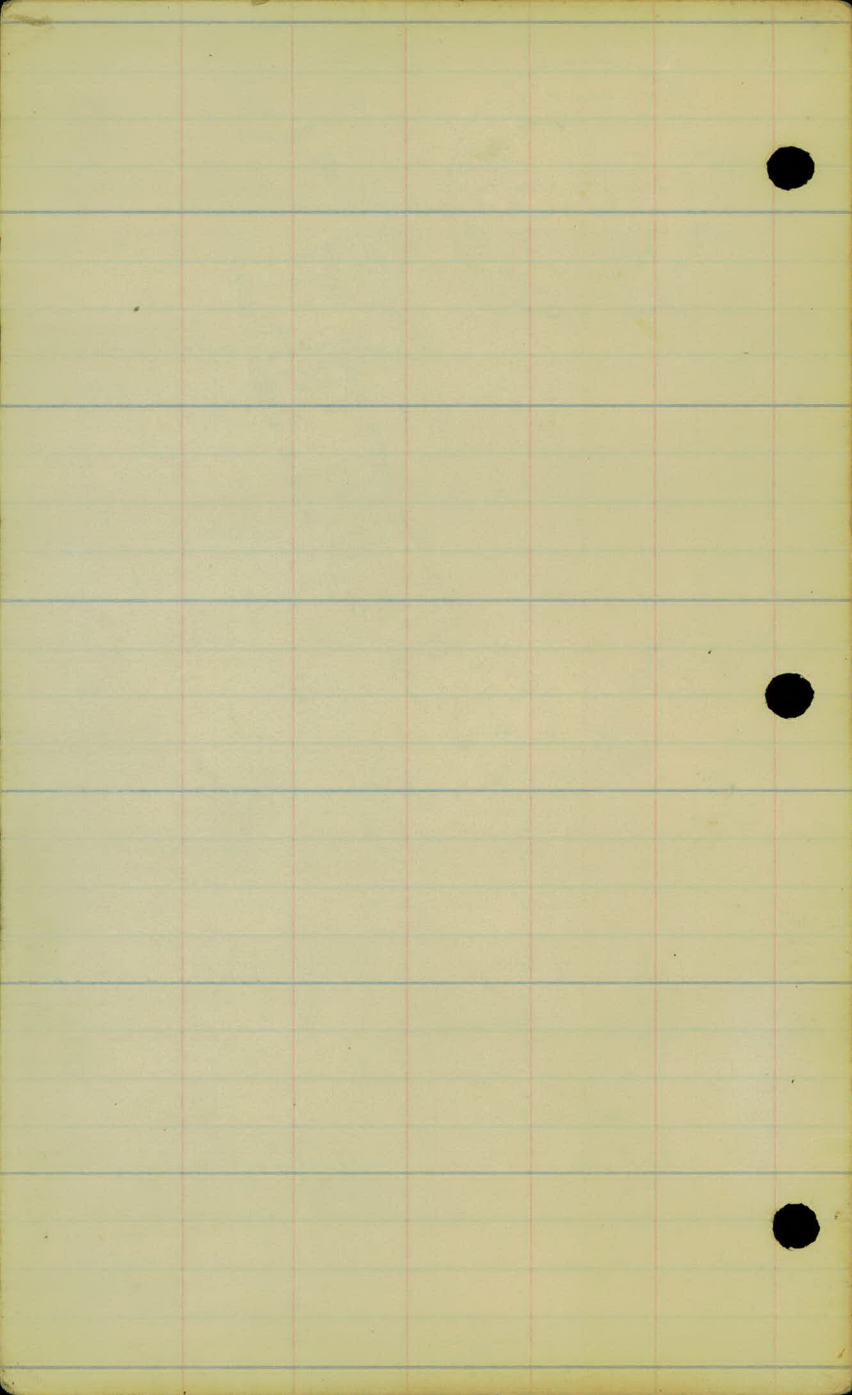
9.1

23.2

Nail in Top of 16" Stump (3)

(2) Nail in 14" Oak

34456.8 P.C. (3)



④ 46+96 P.I.

11

④ 45+86.7 P.C.

3" rails in 10' gaps

2" Iron Pipe Estab 6 by

3" rails in 14' gaps

13.86

12.35

21.65

37+74.25

--- 2 1/2" ST.

15.71

24.5 Guy Rod

2" Iron Mon. Orig.

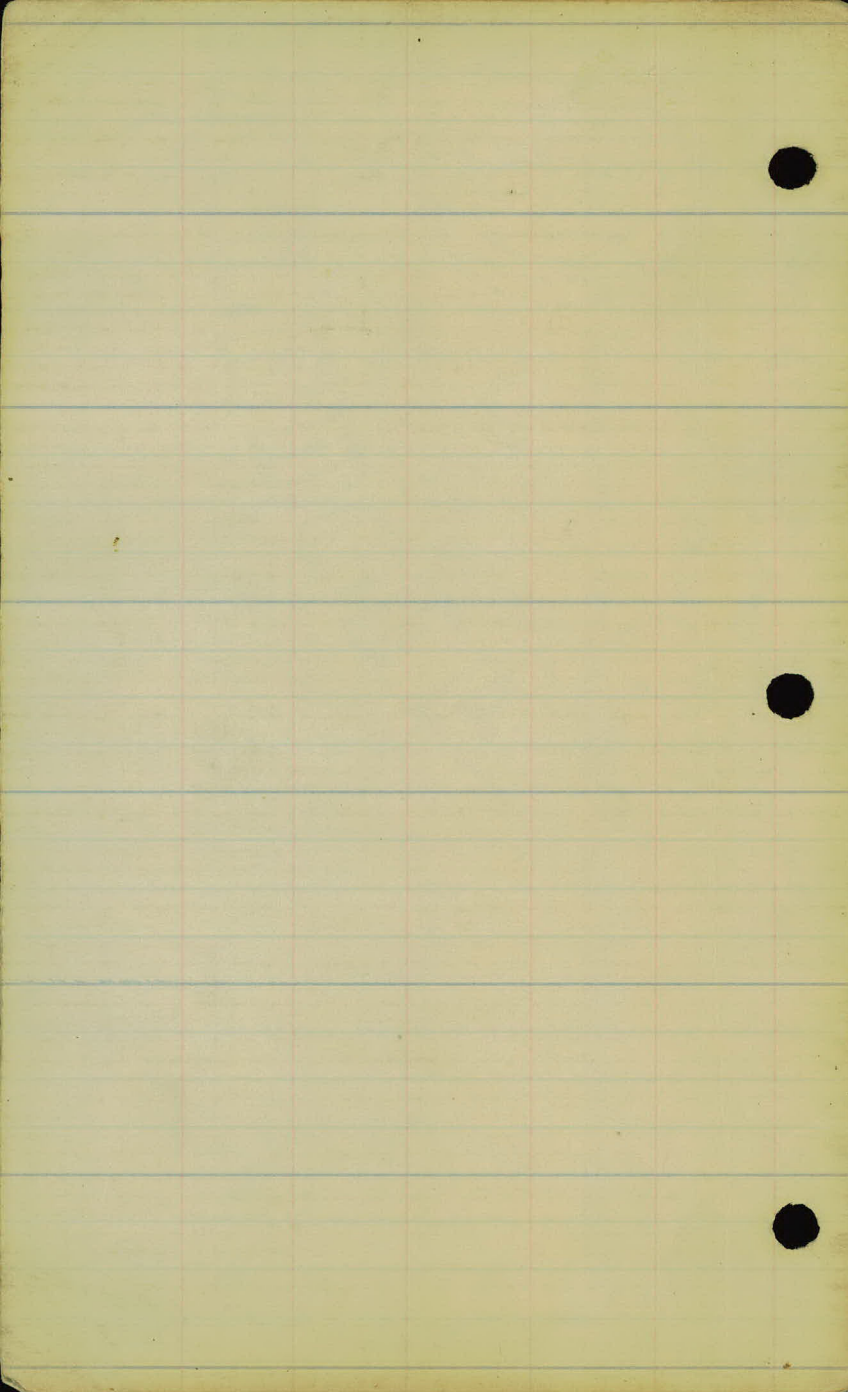
22.35

22.75

38+98.25

④ 37+77.8 P.C.

36+21.5 P.I. ④



Ice House

x 46+26 P.I

o 45+86.9 P.C.

3 nails
" "

77 P

43+12.5

12th St.

86.20

68.41

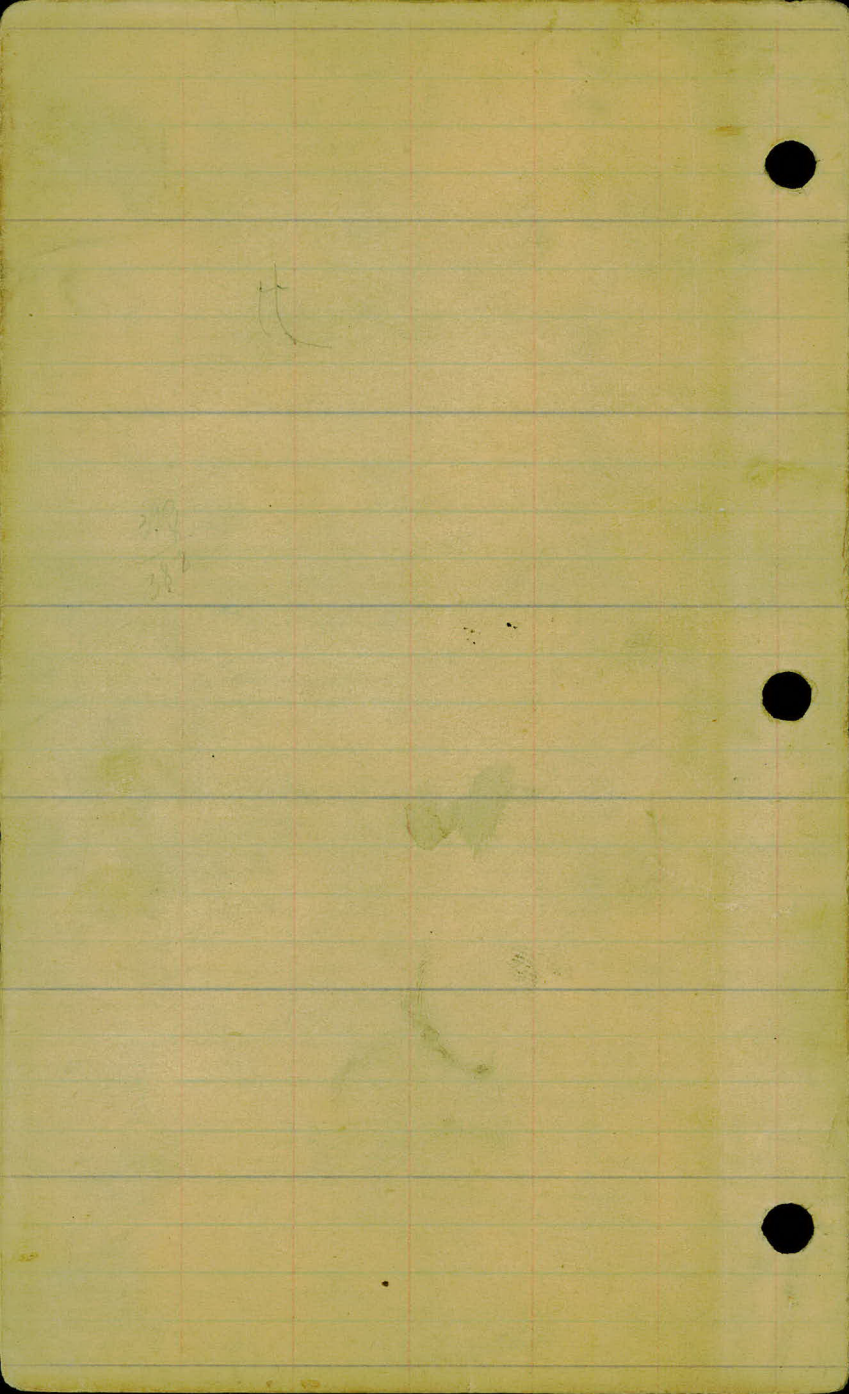
127.25' x 43+39.75

2" Iron pipe (Estab by O.)

11th St.

W.H.G.
C.E.J.
M.S.A. } 3/1/24
T.F.

x



U2467