

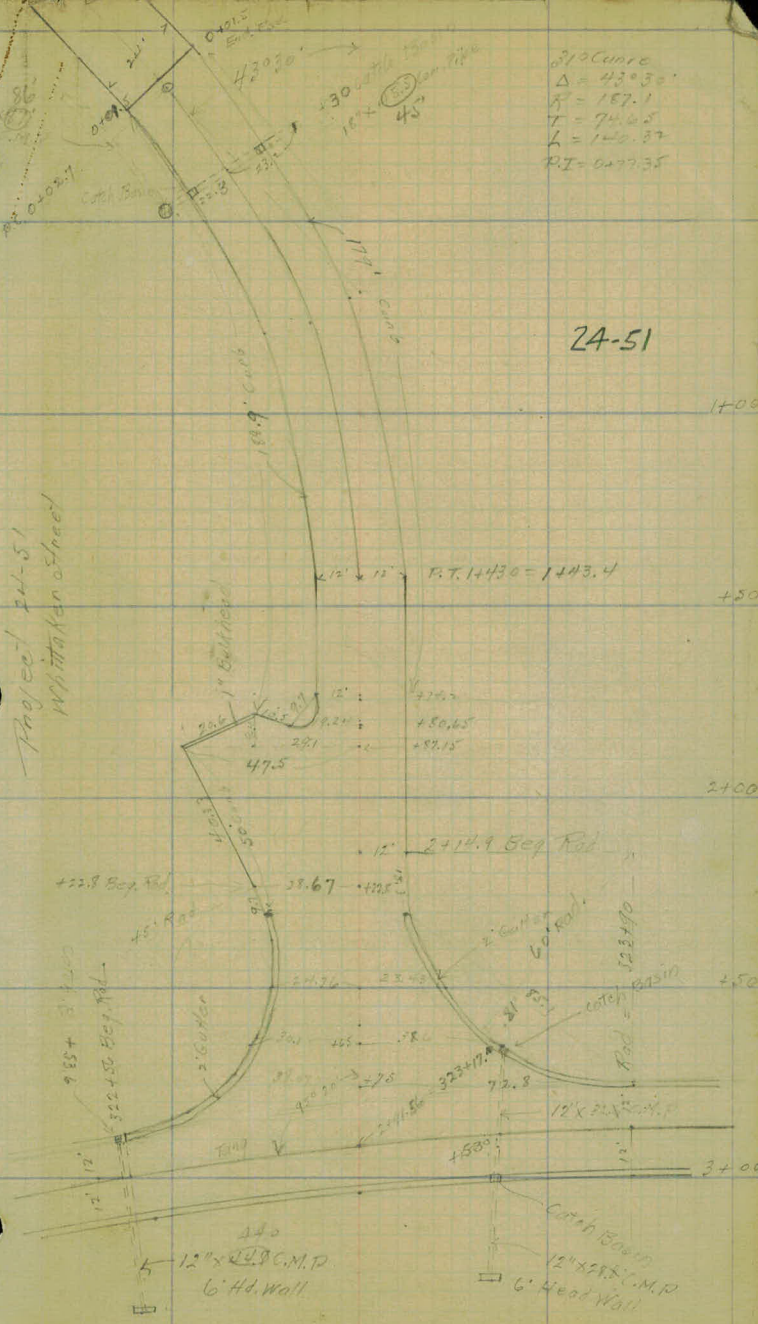
2451

24.51

210 Curve
 $\Delta = 43^{\circ}30'$
 $R = 157.1$
 $T = 74.65$
 $L = 143.87$
 $PI = 647.35$

24-51

Project 24-51
Whittaker Street



1+00

+50

2+00

+50

3+00

440
 12" x 24" C.M.P.
 6' Hd. Wall

Catch Basin
 12" x 24" C.M.P.
 6' Head Wall

9.85 + 3' C&G
 322 + 50.50 Sep. Rd.
 45' Rad.
 2' 6" Cur. 60' Rad.

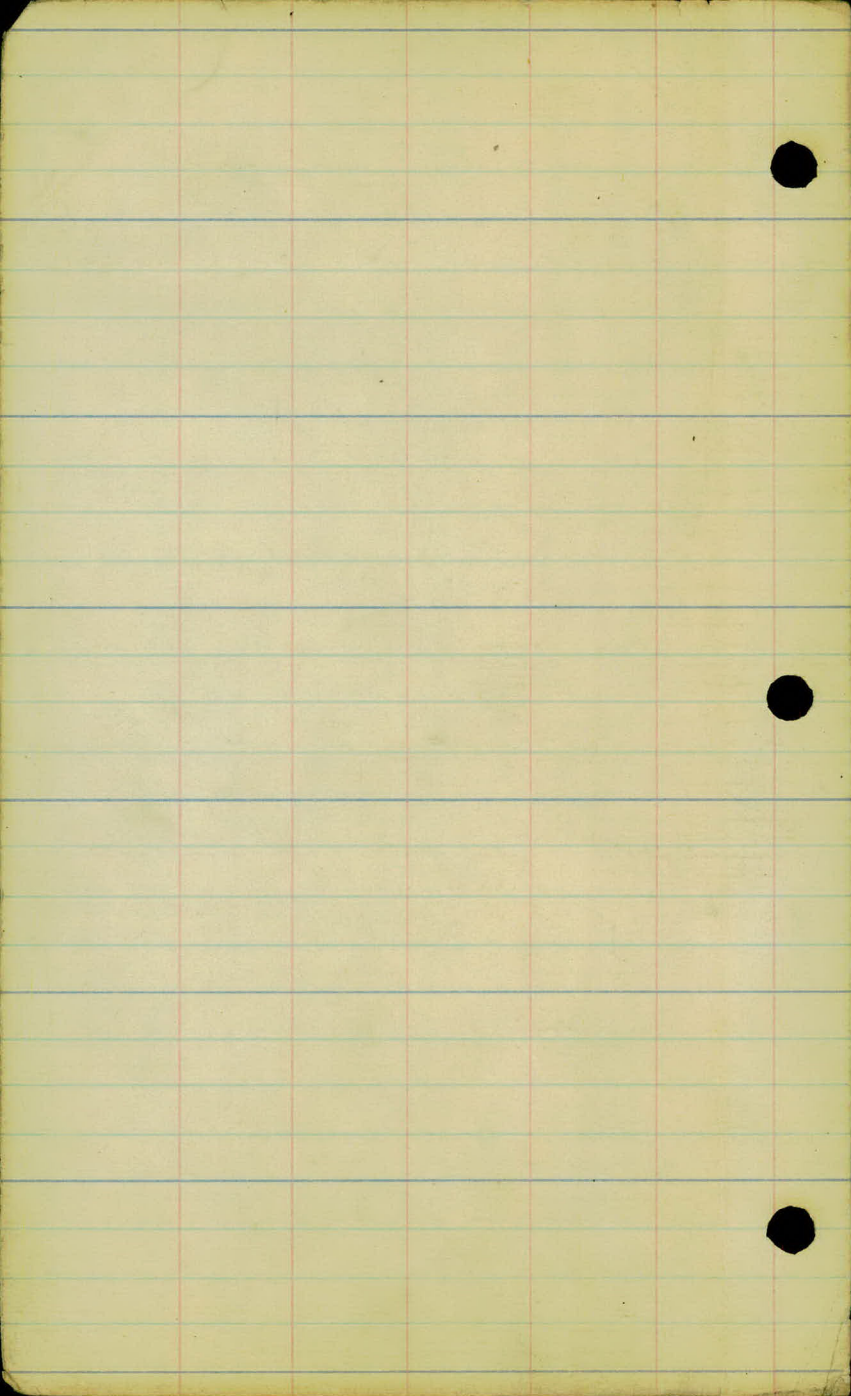
12' 2+14.9 Sep. Rd.

20.6
 29.1
 47.5
 12'
 9.24'
 291
 +50.65
 +52.15

12' x 12' B.T. 14430 = 1443.4

188.9' Curve
 174.4' Curve

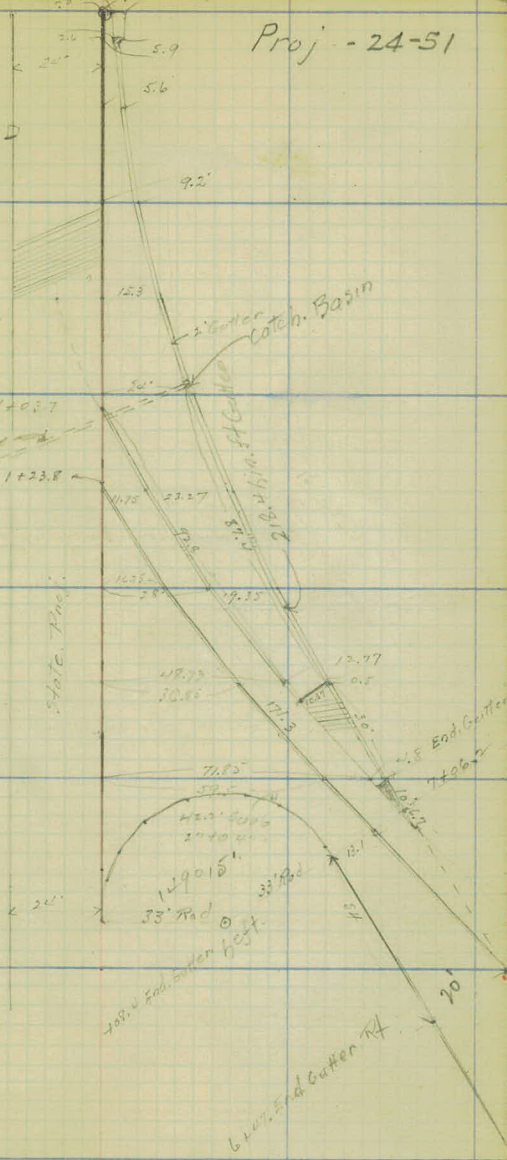
15' x 15'
 86'
 0.0287
 0.099
 20.1
 0.0215
 5.1' Curve
 43°30'
 130' Curve
 16' x 45'



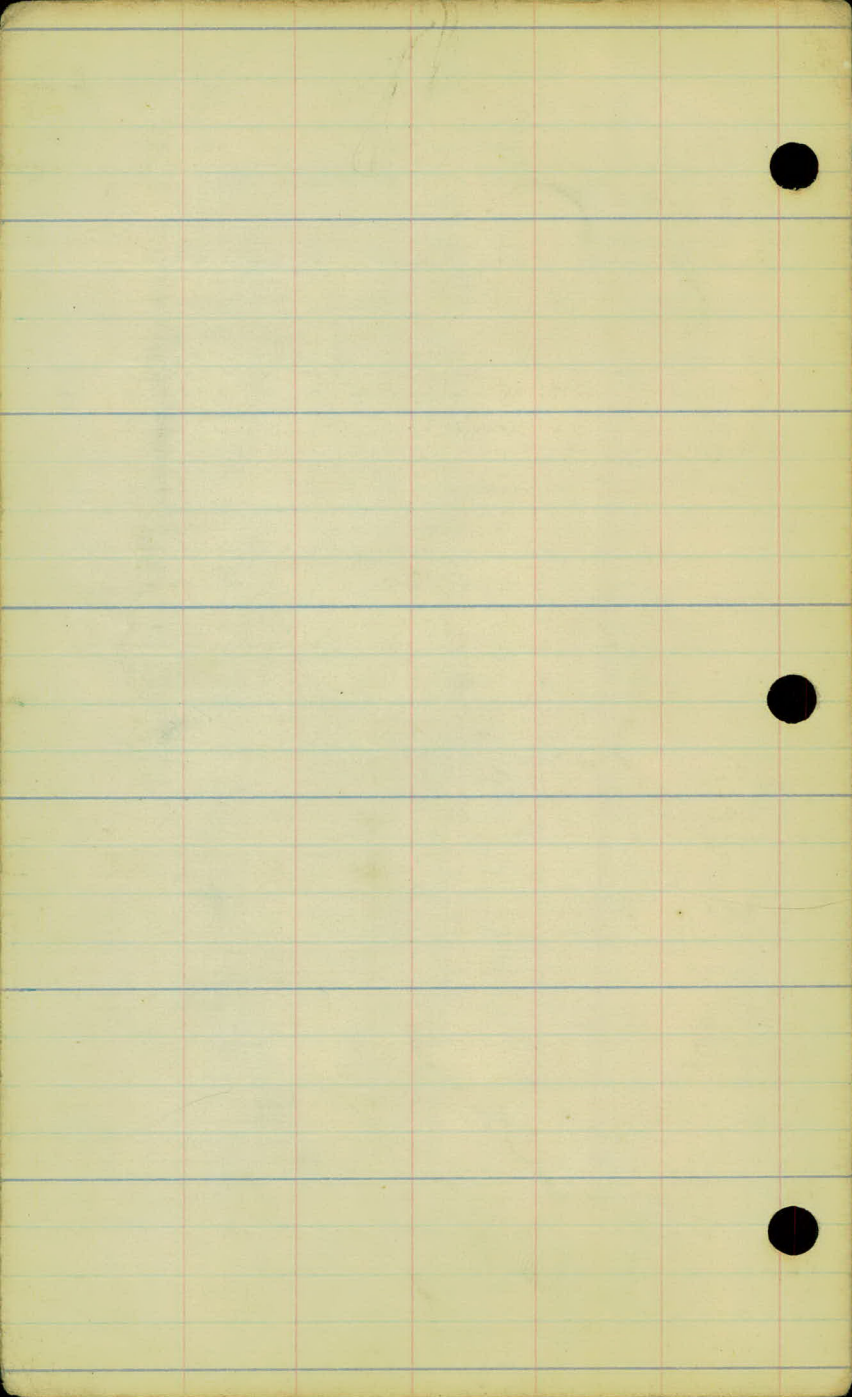
P. T. 9+42.7 = 10+07.8

Proj - 24-51

0.0
+25
+50
+75
1+00
+25
+50
+75
2+00
+37.7



7.062
54
6+53.2²



6284
 111
 7394

6284
 - 3
 59.31

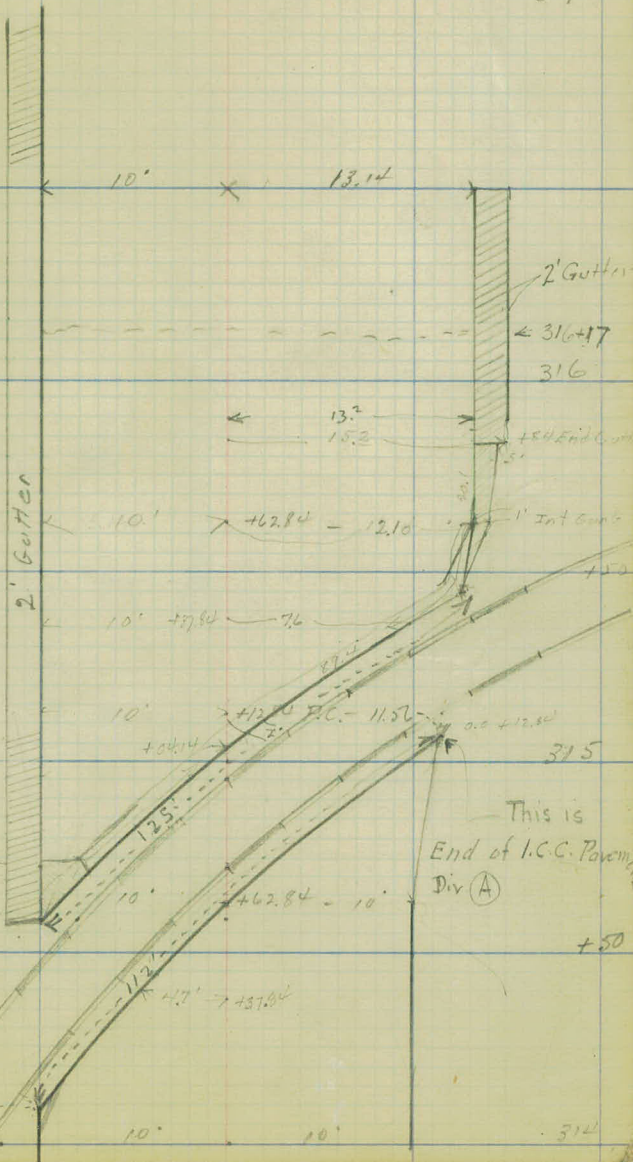
37.84
 247
 3.14

P.T.

317

Check Length of Bulkheads

Rept. (52)
 8-9-24
 132' Bulbhead
 by W.G. Stringer



This is beginning
 of Base course
 Div (B)
 +73.94
 +59.34

This is
 End of I.C.C. Pave...
 Div (A)
 +50

+437.14

314

A □

20
.20
400

Long 20
4000 1000

1000
4000

.25 4% 4% 2.50

20
400
1000

A 16-168.2 - 0000

41
8
378

17+00 - 00 07

2% 3.20
3-12 2.6

6-40

75
75
75
2212
20,700
3
7.11

0.05



82'

7.75
1.3
9.05
6.526
87

75
85
375
3
1125

875
60
57.10

90.50
13.575
104.00 8" Concrete
25.70
170.50

135



23.3
11.6
1.35
3 580
3 48
11.6
1566.0

359.265

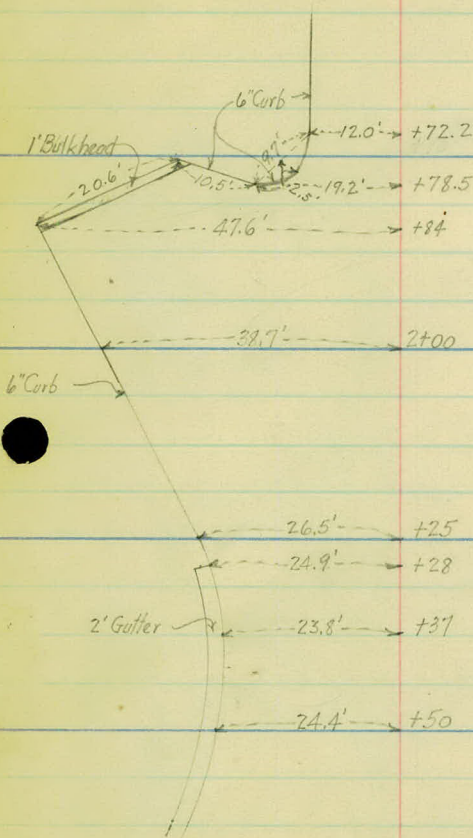
20' = .2
10

16 D.
.20
40 1.25
50 1.15

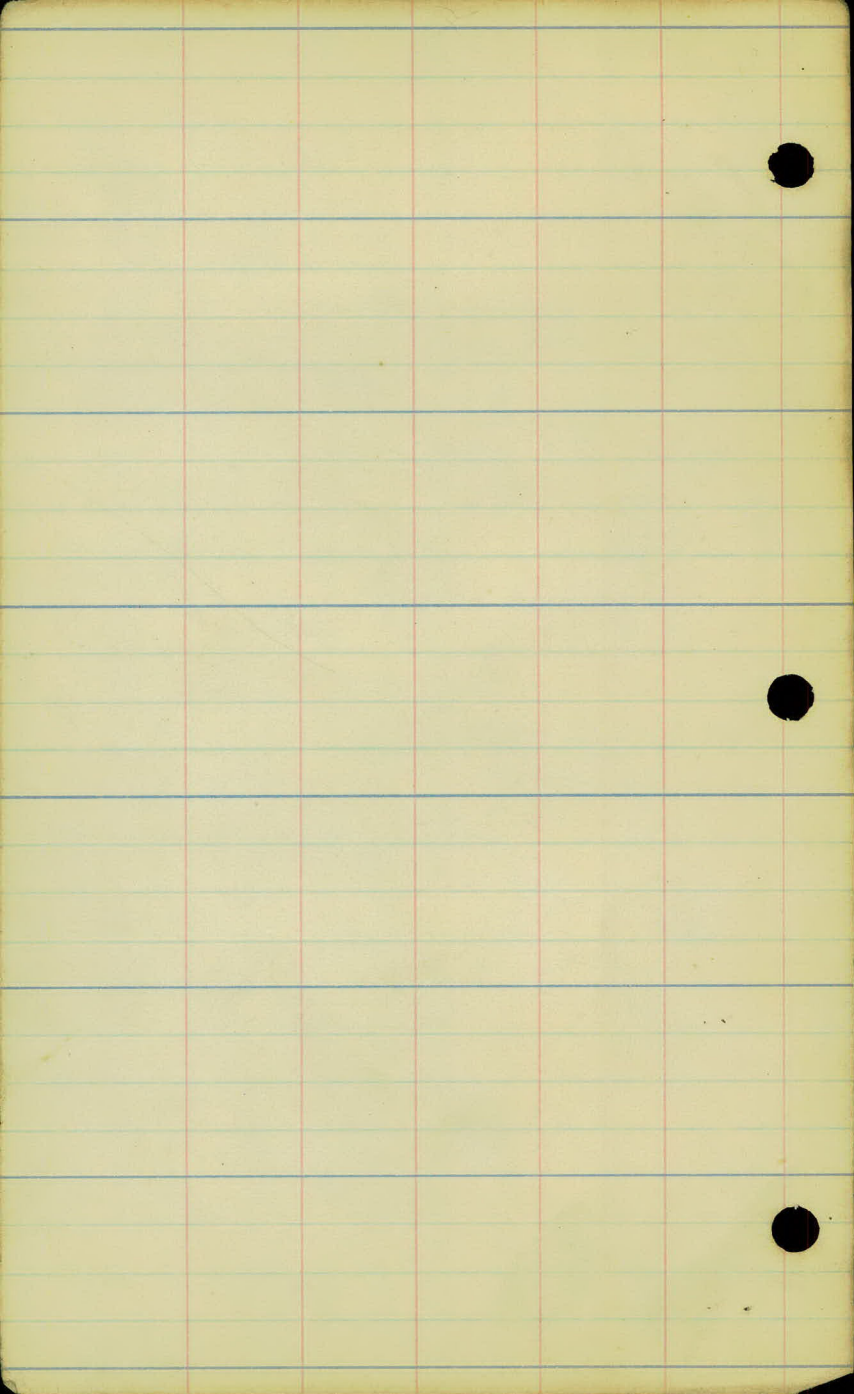
24-51

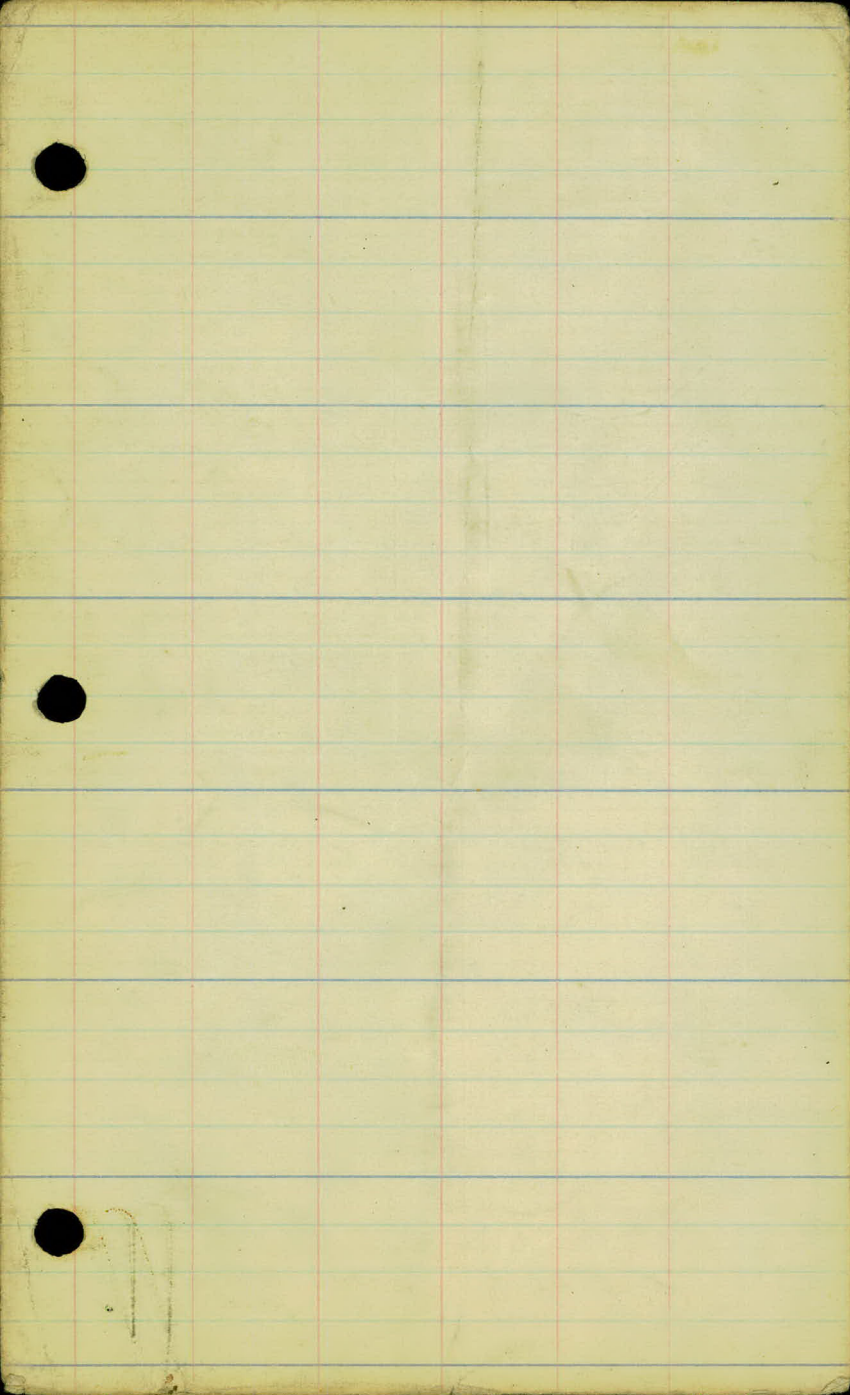
O.R.V.K.)
L.S.H.) 9-30-24
G.M.)

Change of Whittaker St. from that shown on plan.



+75

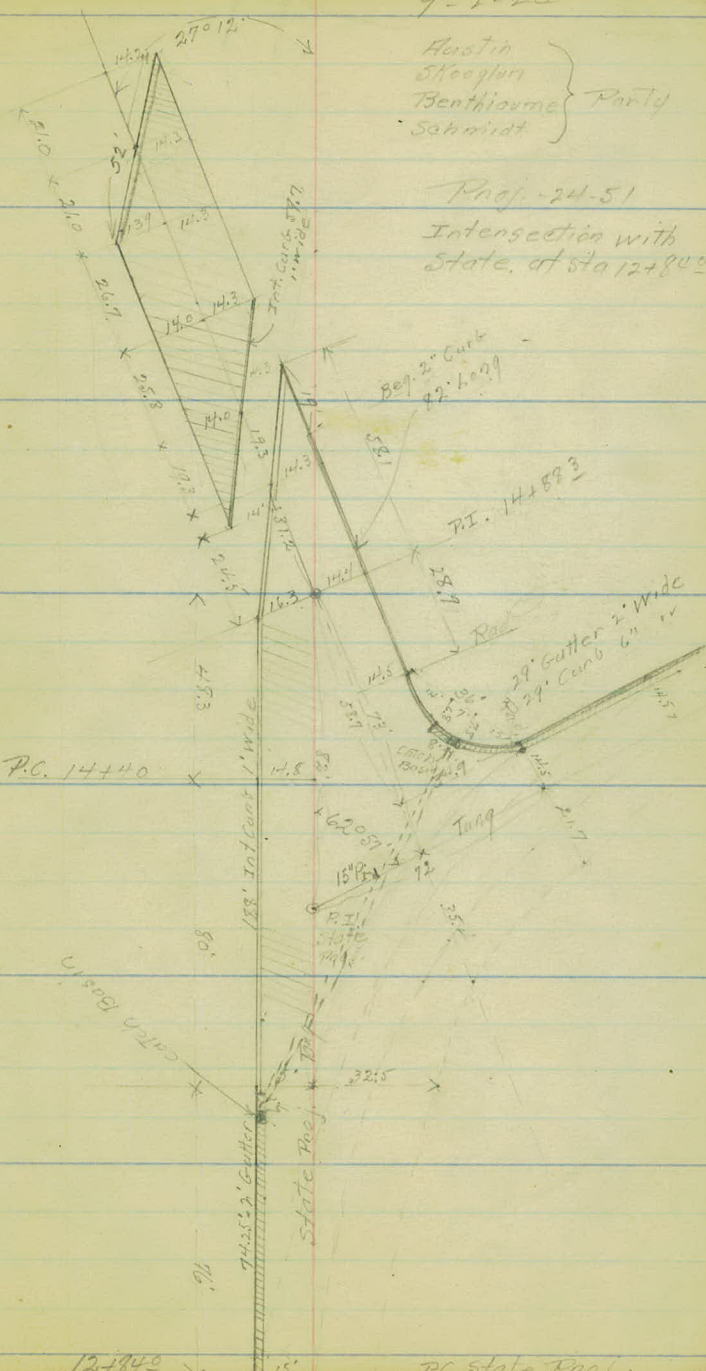




9-2-22

Austin
Sheepman
Benthonme } Party
Schmidt

Prop. 24-51
Intersection with
State. at sta 12+84.0



48.3
80.
76.
204.3
581
25.7
870

P.C. 14+40

12+84.0

P.C. State Hwy

7+09.4 ✓

6+52.2

1 57.2

2.222

3 144

3 144

3 144

3 144

349.298 4

3062⁰⁰

34929

2713.71

43° 30'

21° 45'

179060
133° 25'
46° 35'

P.I. 0+77.35

A = 43° 30'

310 Curve Right

Rad = 187.1

Tang = 74.65

31 | 43.50
31
125
124
100
93
119.60
168.22
1103.8

140.32

.39896
187.1
39896

279272
319168
39896

179060
168° 25'
11032

1403.40
1400.32
3.08

1.4032
0+027
1443.02

74.645416

0+02.7 = P.C.

+ 25 = 3° 27.39' ✓

+ 30 = 4° 13.99' ✓

+ 50 = 9° 19.89' ✓

+ 75 = 11° 12.39' ✓

1+00 = 15° 04.89

+ 25 = 18° 57.39

+ 43.02 = 21° 45'

18.02

7.3
5406

16218

164.586

120
44

0+02.7
74.65
77.35

18.02
9.3
46.5

3027.39
0+13.89

3027.39 ✓ 9.3

3052.5 2.5

7019.19 46.5

3052.5 180
2325.13

11012.39 180
52.5

3052.5 15004.89

3 52.5 4013.89

180 57.39 3052.5

8006.39

3052.5

11058.89
3052.5
15051.39

22.3
31
223
669
691.3

2073913
180
27

180 57.39

2049.58

21045.87

22.3
180
207

Whitaker, ...

9037
45050

610
6628

0 + 00

234.58

2000 + 10

234.59

+ 25

234.60 ✓

179° 60'

+ 30

234.61 234.61 ✓

72° 33'

+ 50

234.63 234.69 ✓

70° 27'

+ 75

234.81 234.81 ✓

1 + 00

234.93 ✓

+ 25

235.15 ✓

+ 43.0

235.28 ✓

+ 50

235.32 ✓

+ 75

235.44 ✓

2 + 00

235.44 ✓

+ 14.9

235.50 235.39 ✓ Roll.

+ 22.8

235.44 235.36 Right

30' N. Top. Pav
235.00 235.67

+ 25

235.32

+ 50

235.09

+ 60

234.97

+ 75

234.84

323 + 10

234.78

02365