

PLANS SURVEY  
EUSTICE STREET

From Larpenteur Ave.

To Como Ave.

CO. PROJ. NO. 23-65

RD.  $\frac{1}{2}$  N<sup>o</sup> 64

Office of Ramsey Co. Engineer  
ST. PAUL, MINN.

Date Filed 4-12-23

File No. "5"

Office of Ramsey Co. Engineer  
ST. PAUL, MINN.

@ +9A - 26 L Light Pole  
@ +59 - 44 L Tral. Pole

@ +79 - 16 R P. Pole

@ 00 - 75 L Fcc  
@ 00 - 55 L Tral.

@ +88 - 26 L Power Pole  
@ +73 - 44 L Tral. Pole  
@ +67 - 26 L P. Pole

@ +46 - 15 R P. Pole

City

Limits

@ 3+1A - 73.74 Jag. m Riv. W. Fcc

@ +75 - 10 L Tral. Pole  
@ +68 - 59.5 L Tral.  
@ +65 - 26 L Wash. Blank  
@ +64 - 25 L P. Pole

@ +43 - 15 R P. Pole

@ +40 - 26 L P. Pole

@ 00 - 52 L Tral. Pole

@ +7A - 41 L Tral. Pole  
@ +53 - 26 L Privy Station  
@ +45 - 27 L P. Pole

@ +11 - 21 L P. Pole

@ +12 - 23 R Pole

1+00

@ +7A - 31 L Tral. Pole  
@ +65 - 59.5 L Tral. Pole  
@ +23 - 28 L P. Pole  
@ +19 - 41 L Iron Tral. Pole  
@ +15 - 34 L Power Pole  
@ +15 - 35 L Iron Rd. Sign  
0 +00



Cult. Field

Cult. Field

@ 3' - 13 R Power Pole

St. Louis Ave.  
Corno Ave.

1+00

Eustis St.

4-11-23

90' - 24" vt. + Corr. Iron Culu. drains left

Elev. 194.91 East Side High.

@+50-21.5' L & Trk.  
@+36-35.5' & Trk.  
@+36-24' L Tral. Pole  
@+20-46' L & Trk.  
@+20-21' L Guy Pole

@+52-14' R Tral. Pole

9+00 @+00-35' L Tral. Pole  
@+00-52' L & Trk.  
@+43-23' L Pow. Pole  
@+70-23' L Light Pole

@+20-17' R Pow. Pole

8+00 @+05-43' L Tral. Pole  
@+00-53.2' & Trk. L.

@+55-12' R 3" Tree

@+26-17' R Pow. Pole

@+00-27' L to Shrubs.

@+54-24' L P. Pole  
@+34-24' L Light Pole

@+40-30' R Nursery Shrubs + Trees

+3" Willow 15' R  
@+15-7' R P. Pole

7+00 @+04-43' L Tral. Pole

@+50-54' L & Trk

7A 7B 15'

@+70-23' R 12" oak

@+59-21' wood lamp post

@+53-24' vid. & Cor. M  
Culv. under Rd

@+35-24' L P. Pole

@+32-12' R A oak  
@+21-1' R 10' oak  
Tbk

@+16-24' L Light Pole

@+03-30' R 6" oak

6+00 @+03-43' L Tral. Pole  
@+00-54.1' & Trk. L.

@+44-16' R Pow. Pole  
@+42-7' R 6" oak  
@+35-16.5' R 10" oak

@+60-25' R 20' Ltr

@+55' & Crossing

@+13-24' L 6" Tree

@+13-25' L Pow. Pole

@+35-26' R 20' Ltr

5+00

4+00

Oak Timber

Euotia st.

9-10-23

9+73.4

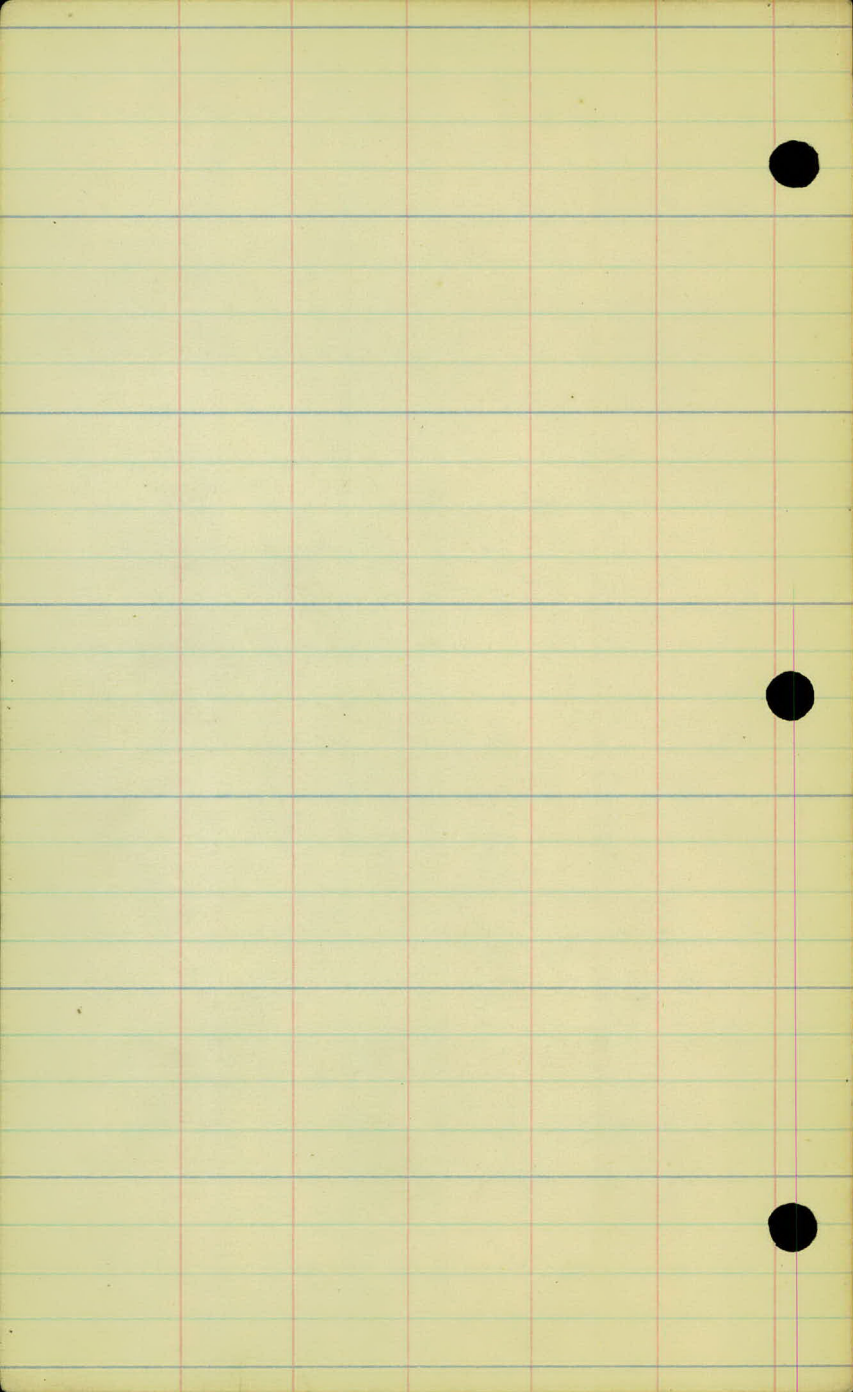
± No. Trks.

9+62

± So. Trk.

Elect. Ry.



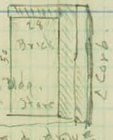


17+00

16+00

@+04 - 2AL edge walk Cor.

@+16-33 L S.E. Cor. Brick Bldg.  
@+30-75 L Tile S. walk. Junc  
@+35-14 L Cor. Curb  
@+30-10 L FCC }  
                  } End }  
@+35-15' L }  
                  } Electric }  
                  } manhole }



15+00

@+30 - 15' L

@+11-22 L P. Pole

14+00

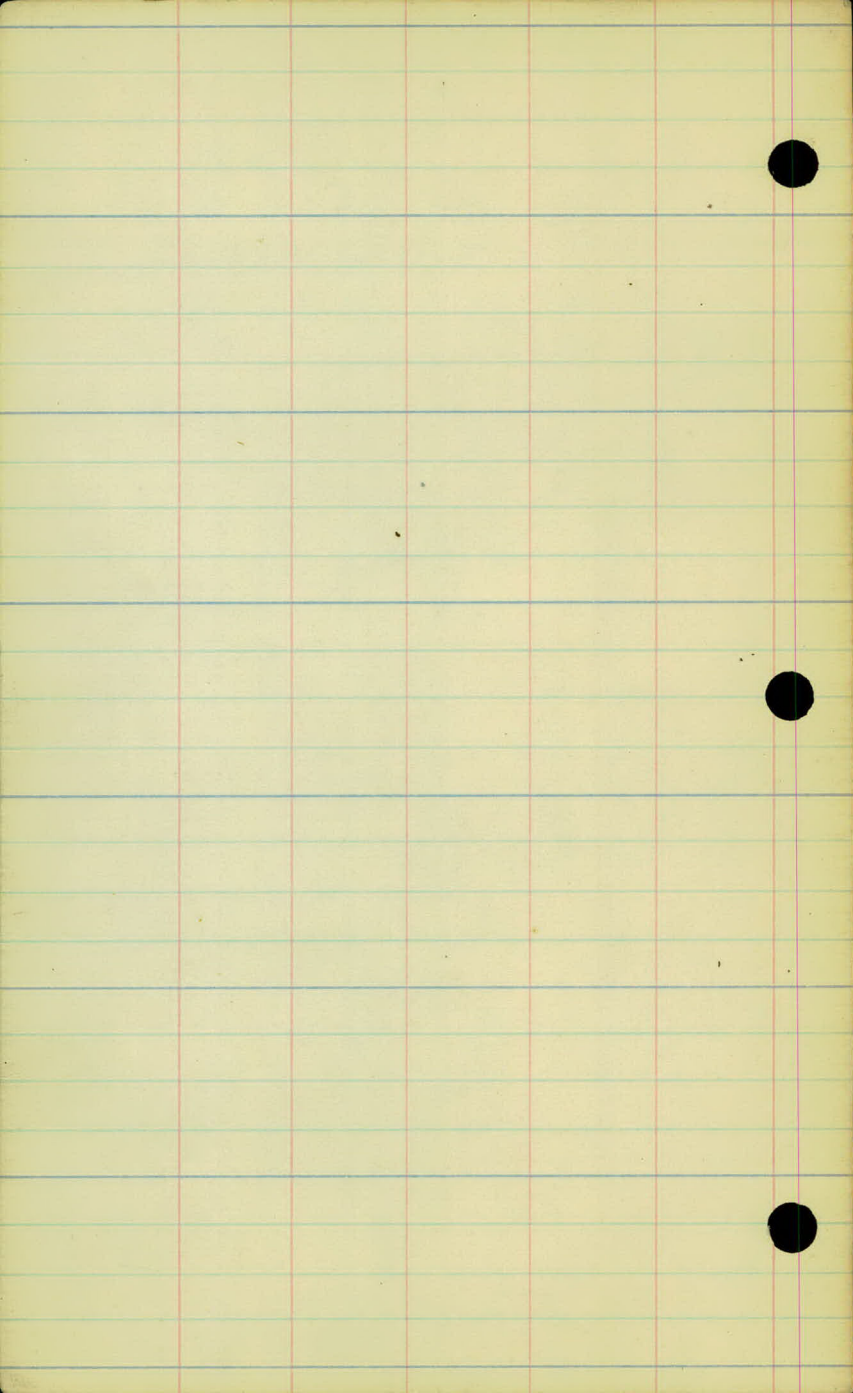
@+16-25 R S.W. Bld.  
@+17-21 R T. Pole  
@+13-30 R Fce Cor

@+35-7 R Mail Bx  
@+32-20 R P. Pole

@+00-312 Fce

Rose Hill Nursery





Check Levels on  
Eustice str.  
Larpentour to Como

M. W. Corley.

7/10/23

4/10/23 sheet # 1 of 2 sheets  
 + H.I. - Elev B.M.

B.M.	4.97	269.40		264.43
T.P.	1.25	259.99	11.6	258.29
T.P.	0.22	250.07	9.64	249.85
TP	0.13	239.75	10.45	239.62
TP	0.51	228.12	12.14	227.61
TP	0.40	219.29	9.23	218.89
B.M.			(2.80)	216.99
T.P.	0.61	208.42	11.48	207.81
T.P.	2.55	199.94	11.03	197.39
B.M.	10.64		5.25	194.69
			80.38	194.63

80.38	264.43
<u>10.64</u>	<u>194.69</u>
69.74	69.74

M.W. Carley

Spike in tele. pole N.W. Cor. Harper tour + Justice

R.R. spike in tele pole E. of sta 9+90

Top of hydrant Come + Eustice City-data.

5.31

Sheet # 2 of 2 sheets

⊕ Levels on Eustice str.  
Como to Harpenteur.

4/10/23

M. W. Carley.

4/10/23 Sheet #1 of 4 sheets

Sta + H.I. - Rod Elev

B.M. 4.66 199.29 194.63

A 7.33 191.96

0 +00 7.3 192.0

1 4.6 194.7

2 3.1 196.2

3 1.5 197.8

T.P. 11.42 210.07 0.64 198.65

4 18.08 9.3 200.8

5 7.9 202.2

+50 7.2 202.9

6 5.9 204.2

7 3.4 206.7

8 0.1 210.0

T.P. 11.40 221.05 0.42 209.65

9 1.06 7.5 213.6

+50 6.0 215.1

6.16 214.89

6.08 214.97

5.93 215.12

5.91 215.14

B.M. 4.67 216.38

16.08 209.65

1.06 194.63

15.02 195.02

Eustice str. Levels Carley A. Parsons / ⑩

● Top of Hydrant on Como at Eustice  
City data.

£ of Como Ave on Eustice  
Edge of paving on Como

1 Str car tracks inter-campus line

2

3

4



● R.R. spike in tele. pole L of str 9-90

4/10/23 sheet #2 of 4 sheets

Sta. + H.I. - Rod Elev

11.40 221.05

Car grade

Car grade

10 4.1 217.0

T.P. 10.48 230.84 0.69 220.36

+50 8.9 221.9

11 3.7 227.1

T.P. 10.14 240.14 0.84 230.00

+50 8.2 231.9

12 3.7 236.4

T.P. 10.52 250.10 0.56 239.58

+50 9.4 240.7

13 5.1 245.0

+50 1.8 248.3

T.P.  $\frac{11.09}{53.63}$  260.92 0.27 249.83

14 9.4 251.5

+50 6.9 254.0

15 4.5 256.4

+50 1.0 259.9

T.P. 9.77 269.40  $\frac{1.29}{3.65}$  259.63

16 6.8 262.6

53.63 259.63

3.65 269.65

49.98 49.98

Eustice St. Levels Corley T. Parsons

$\frac{5.6}{50}$     $\frac{9.4}{100}$     $\frac{2.0}{200}$

East on car grade

$\frac{7.1}{50}$     $\frac{8.1}{100}$     $\frac{6.0}{200}$

West on car grade

4/10/23

Sheet # 3 of 9 sheets

Sta

+

H.I.

-

Rod

Elev

9.77 269.40

+

5.3 264.1

5.3 264.1

5.3 264.1

B.M.

4.97 264.43

Eustice str. levels Corley & Parsons ✓

South edge of paving  
# of Harpenteur Ave.  
North edge of paving.

$\frac{4.2}{50}$	$\frac{3.2}{100}$	$\frac{2.0}{200}$
$\frac{6.6}{50}$	$\frac{7.8}{100}$	$\frac{10.2}{200}$

East on Harpenteur  
West " "

Spike in tele pole on N.W. Corner of  
Harpenteur & Eustice

Sheet # 4 of 7 sheets

Xsections on Eustice str.

Come to Larperter

4/10/23

M.W. Carley-recording  
Persons-Hand level  
Mahoney-Tape

Sta.	Elev.		
		X	X
+50	215.1		
9	213.6	Gravel	
8	210.0		
7	206.7		
6	204.6		Gravel + clay
+50	202.9		
5	202.2		
4	200.8		
3	197.8		
2	196.2	Clay	
1	194.7		
0+00	192.0		
		X	X

Eustice str Xsections

$$\frac{-1.0}{33} \quad \frac{-1.0}{22} \quad \frac{-0.5}{15} \quad \frac{-0.5}{10} \quad \frac{-5.0}{18} \quad \frac{-9.5}{29} \quad \frac{-10.0}{33}$$

$$\frac{-3.0}{33} \quad \frac{-2.5}{28} \quad \frac{-0.5}{16} \quad \frac{-1.2}{8} \quad \frac{-9.5}{26} \quad \frac{-9.6}{33}$$

$$\frac{-5.5}{35} \quad \frac{-5.5}{25} \quad \frac{-0.3}{16} \quad \frac{-0.7}{8} \quad \frac{-8.1}{20} \quad \frac{-8.0}{33}$$

$$\frac{-8.0}{35} \quad \frac{-8.0}{32} \quad \frac{-0.2}{17} \quad \frac{-0.7}{6} \quad \frac{-6.4}{19} \quad \frac{-6.7}{33}$$

$$\frac{-5.5}{34} \quad \frac{-5.5}{30} \quad \frac{0.0}{19} \quad \frac{+0.2}{5} \quad \frac{0.0}{1} \quad \frac{-5.0}{10} \quad \frac{-5.0}{33}$$

$$\frac{+0.5}{38} \quad \frac{0.0}{33} \quad \frac{-0.5}{27} \quad \frac{0.0}{20} \quad \frac{+0.5}{6} \quad \frac{-0.7}{3} \quad \frac{+1.5}{8} \quad \frac{-0.5}{33}$$

$$\frac{0.0}{33} \quad \frac{-0.2}{23} \quad \frac{0.0}{20} \quad \frac{+0.6}{4} \quad \frac{0.0}{1} \quad \frac{+3.8}{8} \quad \frac{+3.0}{23} \quad \frac{+1.0}{33}$$

$$\frac{-1.0}{33} \quad \frac{-1.0}{25} \quad \frac{-0.5}{21} \quad \frac{+0.2}{5} \quad \frac{-2.5}{8} \quad \frac{-1.0}{24} \quad \frac{-1.1}{33}$$

$$\frac{-0.5}{37} \quad \frac{-1.0}{32} \quad \frac{0.0}{26} \quad \frac{+0.9}{5} \quad \frac{-2.1}{5} \quad \frac{-3.5}{12} \quad \frac{-3.0}{14} \quad \frac{-3.0}{33}$$

$$\frac{-3.5}{34} \quad \frac{-1.0}{30} \quad \frac{-0.5}{24} \quad \frac{+0.5}{5} \quad \frac{-2.7}{9} \quad \frac{-2.7}{16} \quad \frac{-2.0}{19} \quad \frac{-2.0}{33}$$

$$\frac{+1.0}{33} \quad \frac{-1.5}{30} \quad \frac{-0.5}{21} \quad \frac{-0.5}{7} \quad \frac{+0.5}{15} \quad \frac{+0.5}{20} \quad \frac{+0.7}{33}$$

Level paving  $\frac{0.0}{10} \quad \frac{+1.0}{13} \quad \frac{+1.0}{20} \quad \frac{+1.0}{33}$

16		262.6	X	X
	+50	259.9		Gravel
	+30			
15		256.4		
	+50	254.0	clay	
14		251.5		
	+50	248.3		Heavy clay
13		245.0		
	+50	240.7		
12		236.4		
	+50	231.9		
11		227.1	clay	
	+50	221.9		
10		217.0	X	X

# Eustice str. X-sections

walk	curb								
+0.5	0.0	-0.7	0.0	-1.4	-1.5	-1.0	+2.5	+2.5	
23	18	18	9	13	19	20	24	33	

walk	curb							
0.0	-0.5	-1.5	-0.3	-2.0	-2.1	+0.4	+0.4	
24	18	17	7	13	23	27	33	

256.9 Elev. Top of man-hole on left

-1.0	-1.0	-1.5	-0.8	-0.3	-1.0	-0.5	-1.5	-3.0	-3.0
33	24	19	14	5	10	16	22	26	33

-1.5	0.0	-1.0	-0.7	-0.5	0.0	-0.5	-0.5	
36	27	21	15	9	11	30	33	

-3.0	+1.0	+1.0	-1.5	-0.6	-0.5	-1.0	-0.4	+0.4	+5.0	+6.0
33	27	26	19	15	6	8	10	12	20	31

+9.0	-0.5	-1.0	-0.5	-0.3	-1.0	+0.2	+15.5	+15.5
36	23	18	16	5	8	11	30	33

+9.5	+9.5	+5.0	0.0	-1.5	-1.0	0.0	-1.0	+2.8	+10.5	+16.5	+16.5
33	30	29	22	18	15	5	7	10	28	30	33

+13.0	+5.0	-1.0	-0.5	-0.2	-0.6	-1.5	+5.0	+11.5	+13.5
39	29	18	16	4	6	10	19	32	33

+11.8	+5.0	+2.5	-1.0	0.0	-0.5	-0.2	+13.1	
36	33	24	19	16	6	10	33	

+9.1	+0.5	-1.5	-0.5	0.0	-0.8	-0.8	+4.0	+9.0	+9.1
36	26	23	19	2	4	10	20	23	33

+9.5	-0.5	0.0	+0.1	-0.5	+8.5	+8.6	
33	18	19	5	9	23	33	

+8.3	+8.0	+5.0	-0.5	-0.3	0.0	-1.0	+1.4	-2.5	-4.0
33	31	31	19	16	5	7	13	24	33

0.0	-1.0	-1.0	-0.2	-1.0	-5.0	-9.0	
33	30	19	16	10	21	35	

Sta

Elev

clay

clay

16+10

263.0 +0.4

L E R

Eustice str sections

$$\frac{+0.5}{33}$$

$$\frac{+0.2}{11}$$

$$\frac{-1.3}{18}$$

$$\frac{-1.3}{19}$$

$$\frac{+1.0}{23}$$

$$\frac{+1.0}{33}$$

Sheet #4 of 9 sheets

Eustis St.  
N $\frac{1}{2}$  of N.W.  $\frac{1}{4}$  Sect. 20-T29 R23.

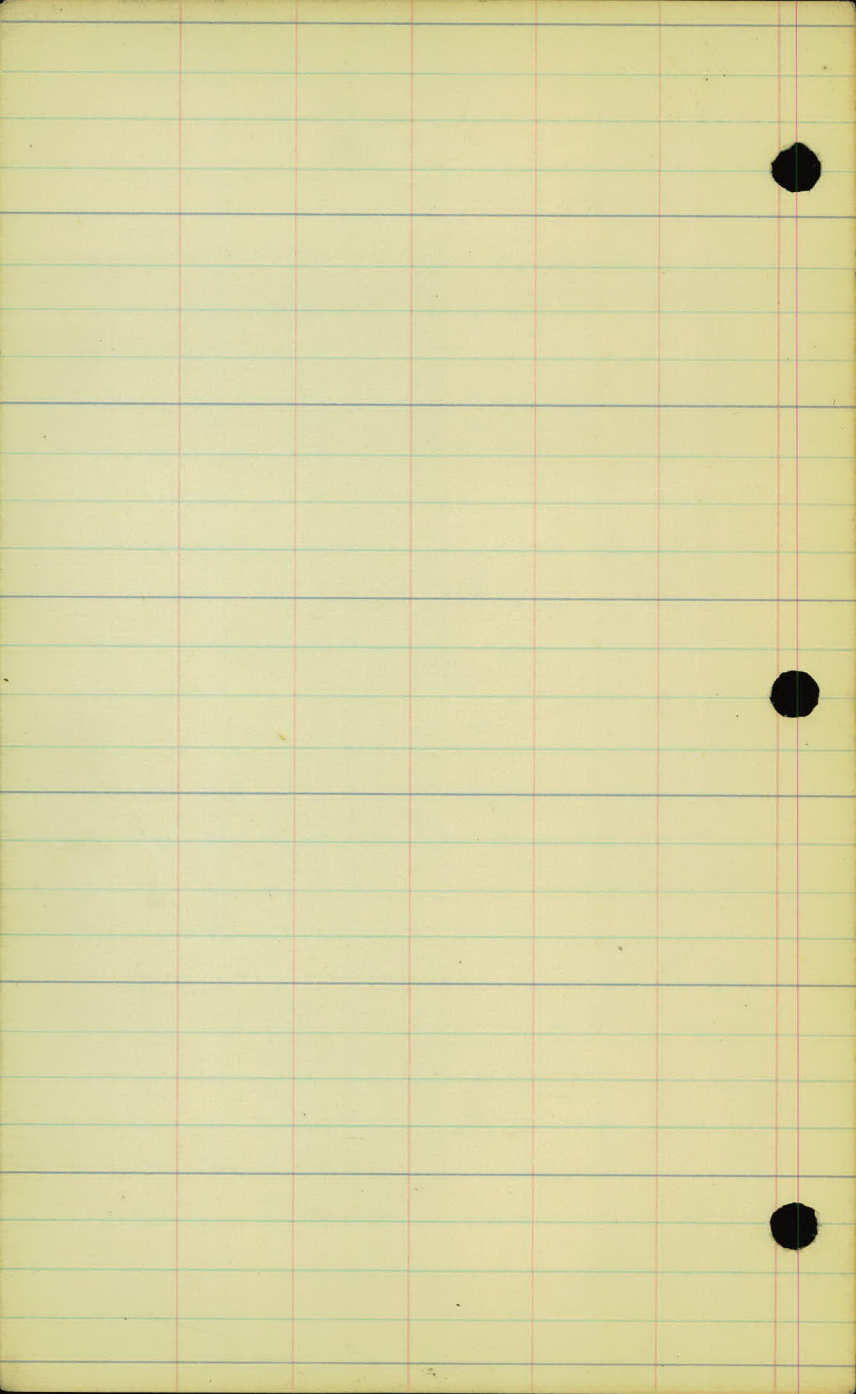
# INDEX

Page	Title	Sta.
1 & 2	Alignment.	0+00-16+228
3-7	Topography	0+00-16+228
8-9	Check Levels	0+00-16+228
10-13	☉ Elevations	0+00-16+228
14-17	Xsections	0+00-16+228.

April - 10 - 11 - 1923

G. Reutler Inst.  
M. Carley Level  
A. Parsons Rod  
D. Webber Hd. Cham  
J. Mahoney R. " " "  
M. Galvin Flag + Stakes

Proj. No 23-65





Station Point Left & Right Calc. Bearing

16+33.7 P.O.T.

16+22.8 So. edge Pavement End Location.

9+73.4 & No. Elect. Ry. Trks.

9+62 & So. . . . . "

N00°-00'E

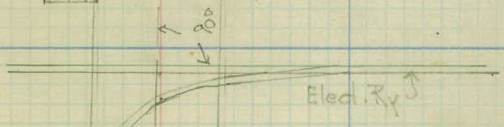
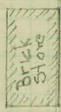
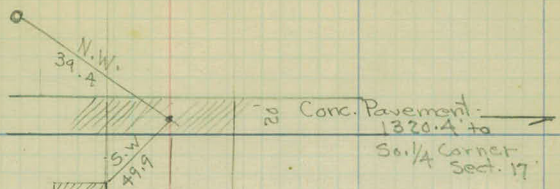
3+60 City Limits.

0+00 No. Edge Pavement on & Eustis.

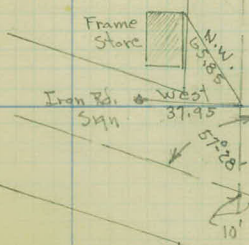
Eustis St. 4-10-23

(2)

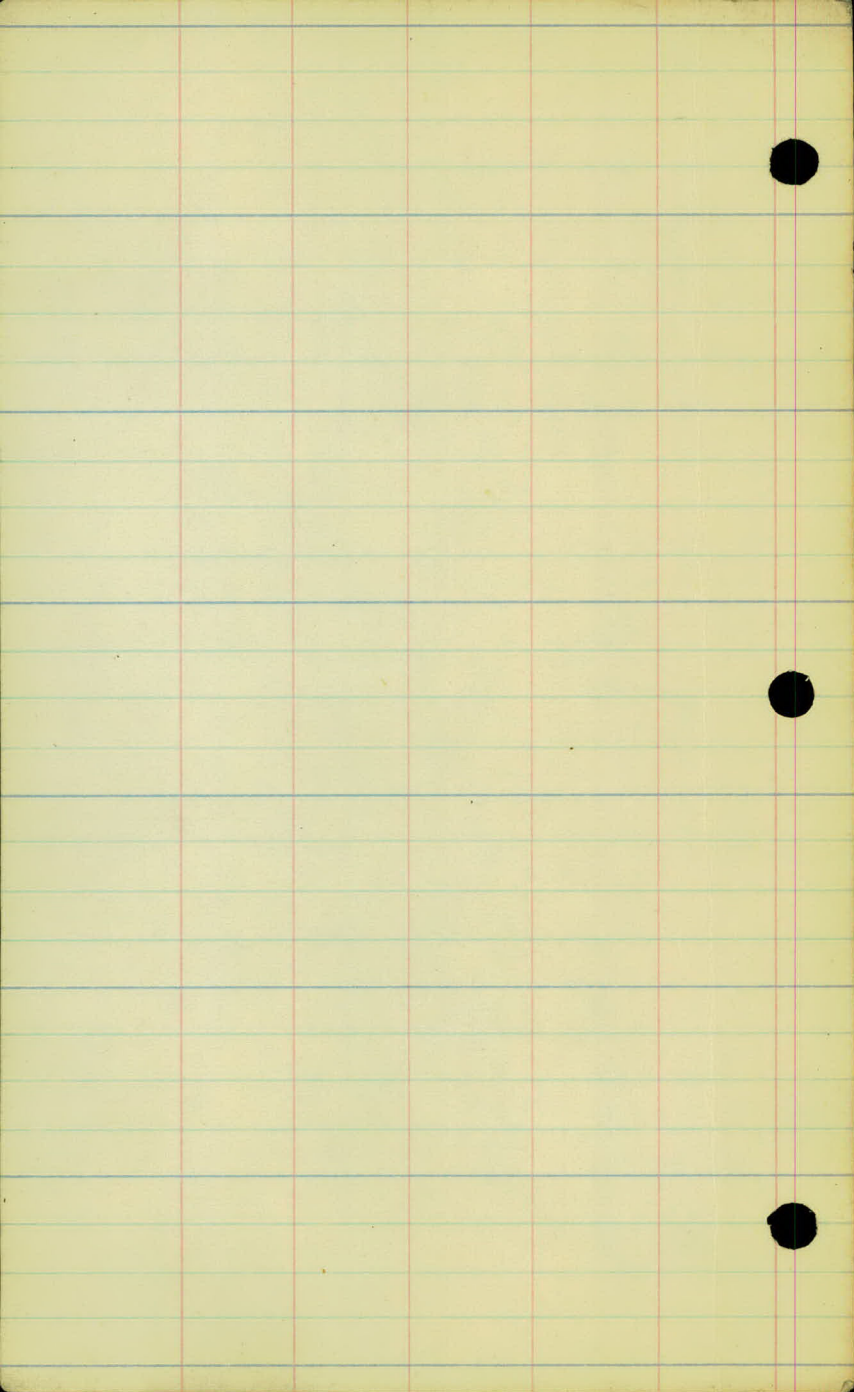
Iron Rd Sign



1/4-1/4 Line of N. 1/2 of  
N.W. 1/4 of Sect. 20



E. Como Ave.





Eustis St.

4-11-23

90<sup>2</sup>-14

st 15	end Curb right 15'
st 00	Edge Paving
- 42'	± No. Trk
- 41.5	± Como Ave
- 53.8	± So. Trk.
- 96.5	Edge Paving So. Intersection

Wednesday

Lloyd

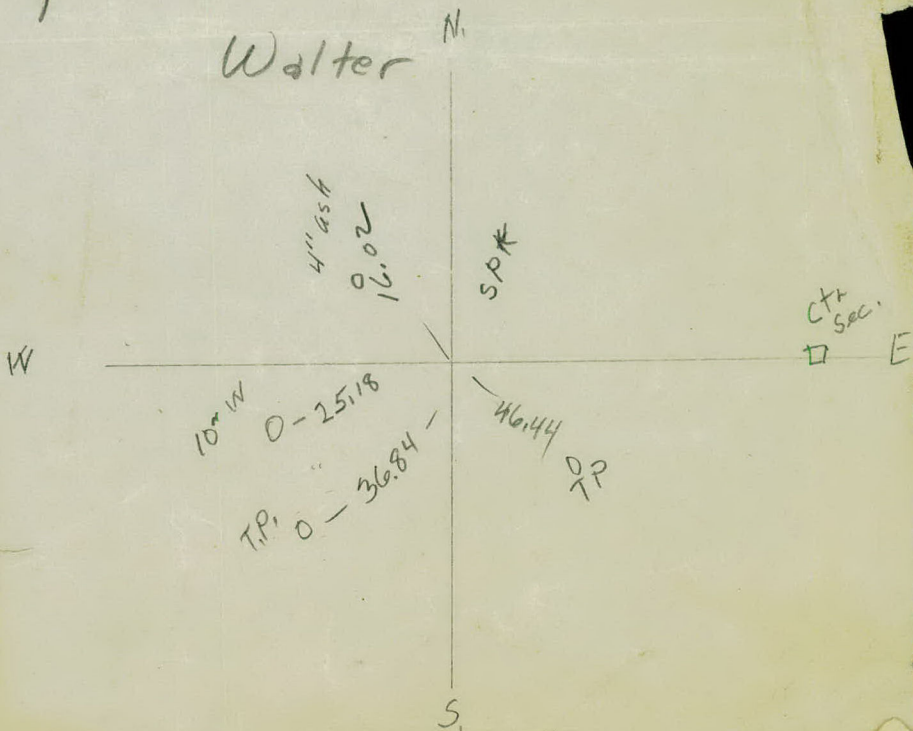
See if the City has a  
tie to the  $\frac{1}{4} \frac{1}{4}$  (NTS) Line

At Eustis & Como Ave.

Sometime Tomorrow

Please

Walter



1757 No. ALBERT

Si. D. W. G. 111 Staker

Plan Survey Lakeview Drive

Sub 87

U2458