

PLANS SURVEY  
MENDOTA ROAD  
In Section 29 - Dakota Co.  
CO. PROJ. NO. 23-59  
RD. % NO.

Office of Ramsey Co. Engineer  
ST. PAUL, MINN.

Date Filed..... 4-8-23

File No. .... "3" (23-59)

Mendota Road  
Sect. 29 Dakota Co.

INDEX

| Page  | Title        | Sta.            |
|-------|--------------|-----------------|
| 1-4   | Alignment    | Sta. 0+00-40+39 |
| 5-14  | Topography   | 0+00-40+39      |
| 15-16 | Check Levels | 0+00-40+39      |
| 17-22 | ± Elevations | 0+00-40+39      |
| 23-29 | X sections   | 0+00-40+39      |
| 30-31 | Culverts     |                 |

JOB 23-59.

G. Reiter Inst

Carley - Level

H. Persons Rod

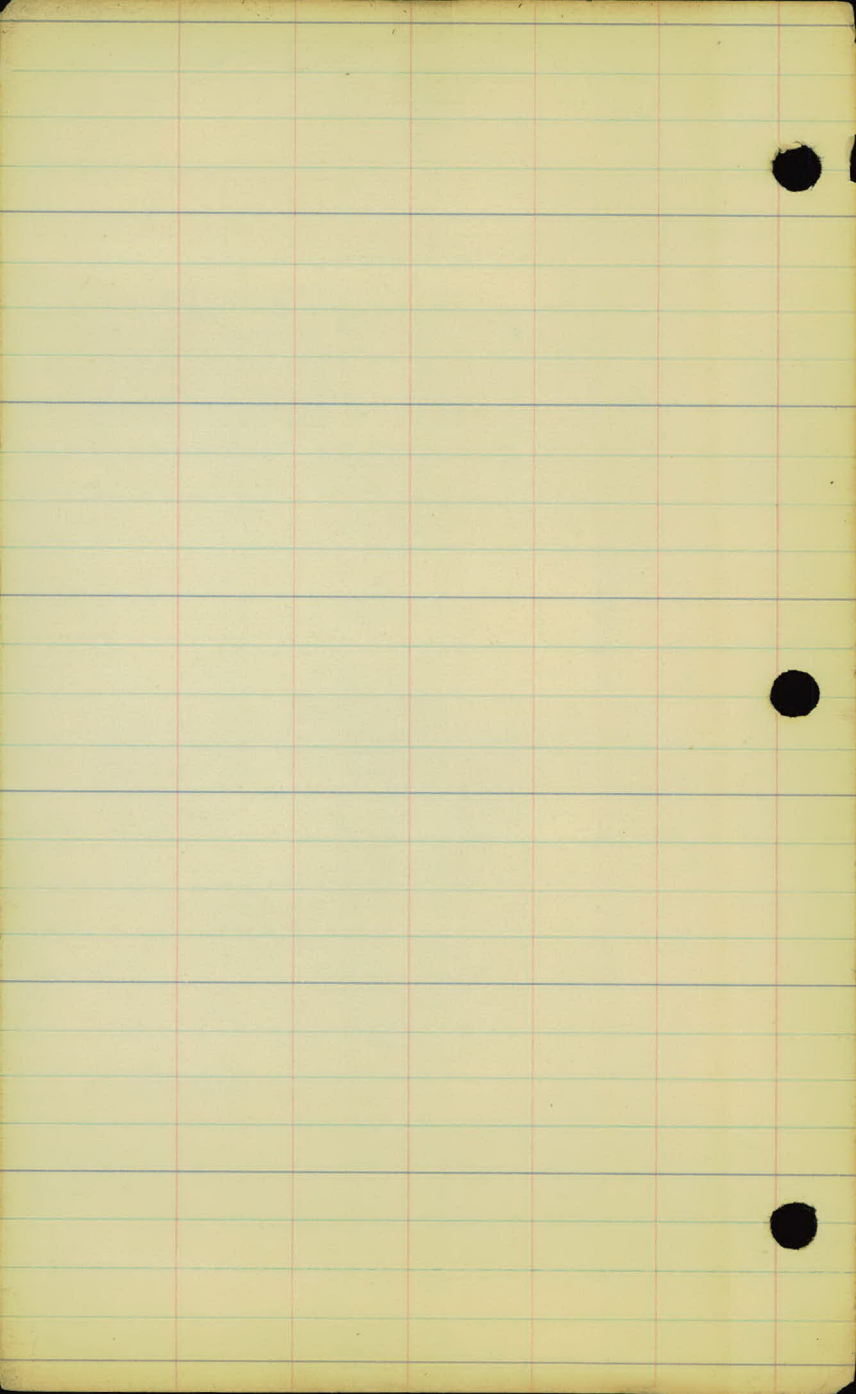
Don Webber Hd. Cham

J. Mahoney Pr. " "

J. Carr Stakes

M. Galvin Flag.

April - 1923





Mendota Rd.

4-3-23

Calc. Mag.  
Bearing

Station Point Left. Right

S 89° 51' E ✓

13+18.1

P.I.

0-09'

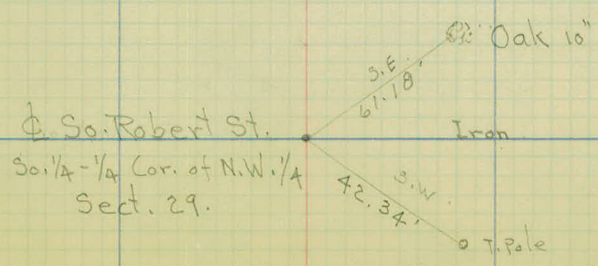
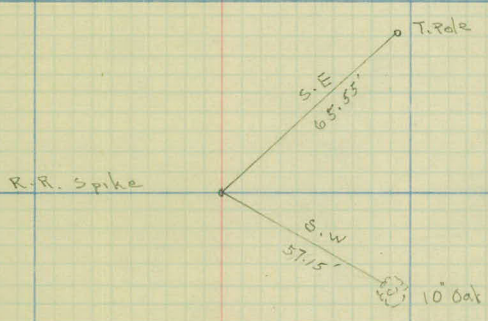
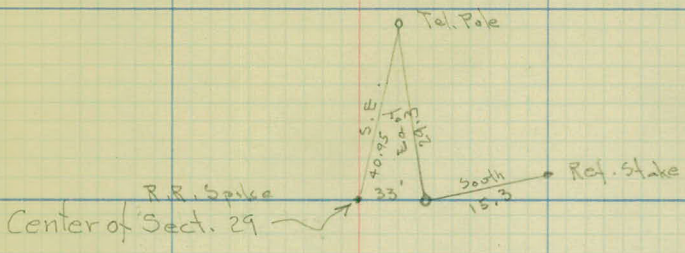
16+00

P.O.T.

N 90° 00' E N 87° 30' E

0+00

Tray



4-5-23

Mendota Rt.

Station Point Left Right

Calc. Mag  
Bearing

32 + 05 <sup>78</sup> P.T.

+05.68

N 62°-14E

N 61° 56' E

+50

13°-57'

31

12°-33'

+50

11°-18'

30

10°-03'

Δ 27°-55' Lt.

+50

8°-48'

C 5°-0'

29 + 32.3 P.I.

S.T. 284.92 ✓

L.C. (558.40)

558.3

29

7°-33'

+50

6°-18'

28

5°-03'

+50

3°-48'

27 + 00 ✓

2°-33'

26 + 47 <sup>38</sup> P.I.C.

1°-18'

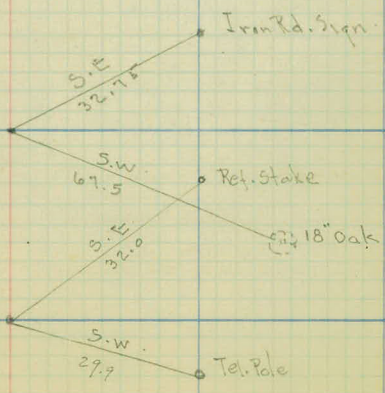
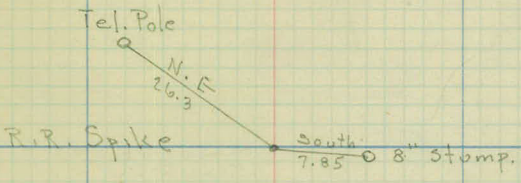
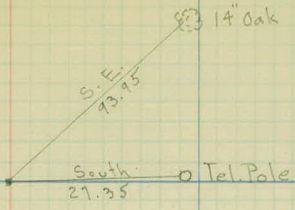
21 + 339 P.O.T.

589°-51E

L

R

(3)



| Station | Point | Left | Right | Calc. Mag. Bearing |
|---------|-------|------|-------|--------------------|
|---------|-------|------|-------|--------------------|

40+39.00

Connection with Pavement

N77°-46' 375-10E  
28

+04.6

38+04.53 P.T.

38

7°-46'

+50

7°-38'

37

6°-08'

36+76.0 P.I.

15°-32'

Δ 15°-32' Rt.

+50

4°-38'

C 6°-0

36

3°-08'

S.T. 130.30 ✓

35+45.1 P.C. ✓

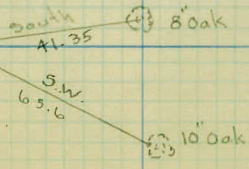
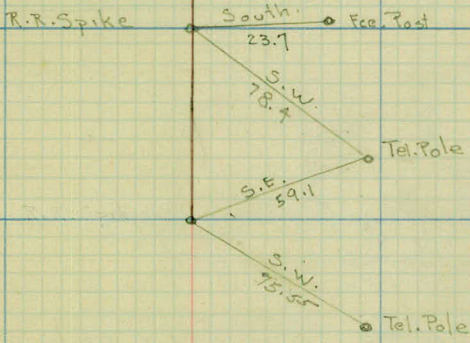
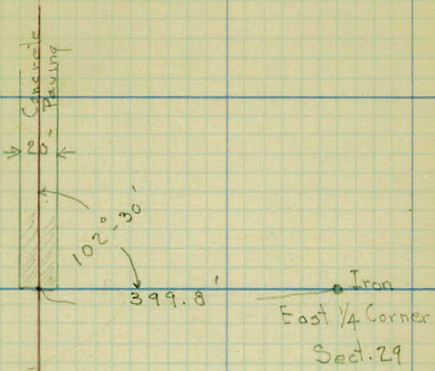
1°-38'

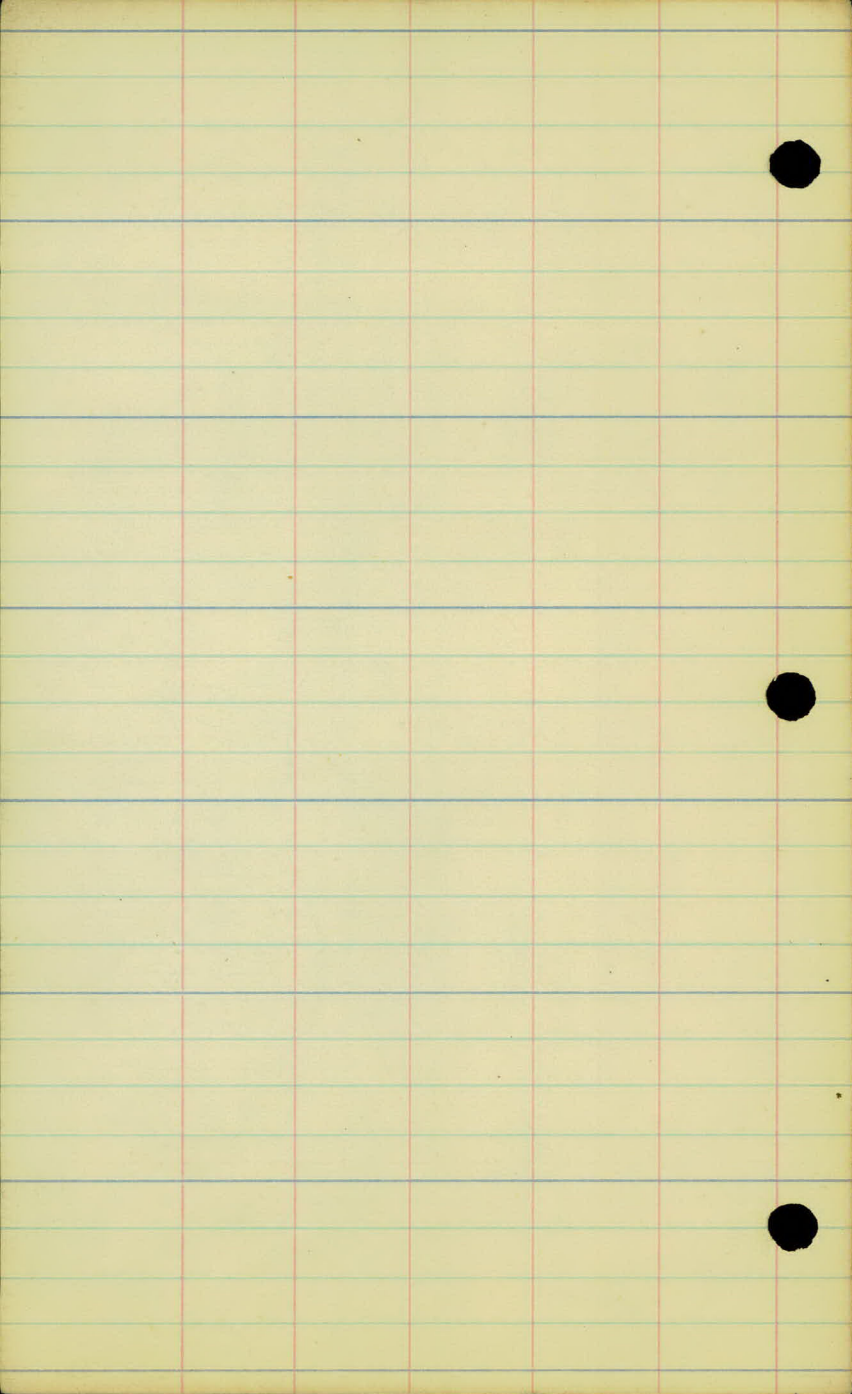
L.C. 259.50

258.9

N62°-14'E

N61°56'E







Mendota Rd.

4-8-23

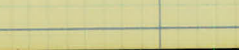
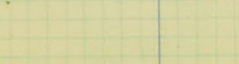
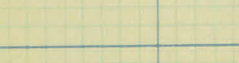
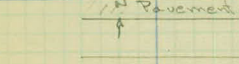
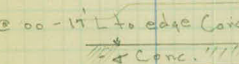
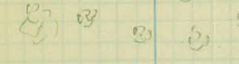
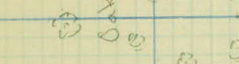
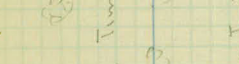
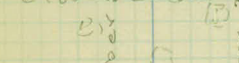
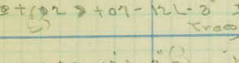
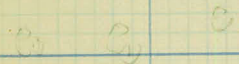
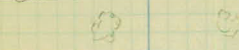
Clay Soil

at 00

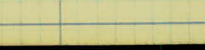
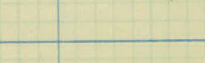
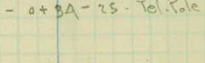
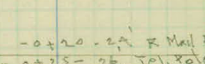
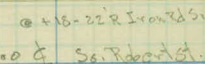
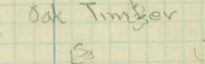
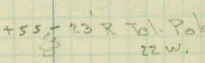
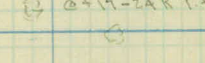
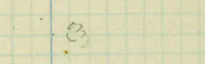
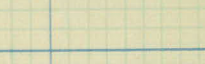
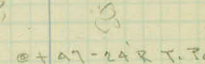
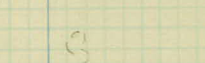
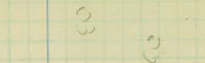
at 50. Robert St.

Cult. field

+400 @ 00 end Timber 20'



@ +46-25' R.T. Pole



2

+100

0+00

-1+00

@ +102 - 101 - 10 L 2' Trace

@ +80 - 10 L 3' 200'

Oak Timber

Edge Timber 25'

00 - 14 L to edge Conc.

4" Conc. 11"

Pavement

2 1/2"

Edge Timber 35'

@ +17-24 R.T. Pole

@ +55 - 23' R. Tel. Pole 22w.

Oak Timber

@ +16-22' Iron Rd Sign

0+00 @ So. Robert St.

- +20 - 24' R Mail Ex

- +25 - 26' Tel. Pole

- +34 - 25' Tel. Pole

Mendota Rd.

4-8-23

@+94-28'R T.Pole

Cult. field

9+00

Cult. field

8

@+23-26'R T.Pole  
22W

7

Cult. field

@+60-24'R  
T.Pole

Clay Soil

Links

6

@+70 end Timber R 45'

Cult. field

Golf

5

4+00

Handwritten notes and symbols in the bottom left corner, including 'B', 'S', and 'L' characters.

Handwritten notes and symbols in the bottom right corner, including '50', '55', and '60' characters.

Mendota Rd.

4-8-23

L F A

14

Cult. field.

@ + 49 - 29 R T. Pole

13

Cult. field

Clay Soil



@ + 27 & Driver  
Need 20' Cult.

Cult. field

12

@ + 69 - 26 R T. Pole

11

Clay Soil

10

Cult. field

Golf Links

Cult. field

9+00

Mendota Rd

7-8-23

19+00

Golf Links

18

@+10. Edrwell.  
Need 38 Cub



@+06-29' R T. Pole



17

Cult. field

Cult. field

16

@+56-29' R T. Pole



15

@+02-29' R T. Pole  
22W



14+00

Cult. field

Golf Links

Cult. field

Mendota Rd.

4-8-23

24+00

@+00-10L

Golf Links

2' Tree

B

@+59-28' R T.Pole

23

@+07-29' R T.Pole

22

Cult. field

21

Golf Links

@+25-29' R T.Pole  
18W

20

Cult. field

Clay soil

@+69-29' R T.Pole

19+00

Cult. field

Mendota Rd.

4-8-23

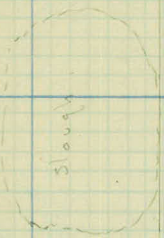
L = R

29+00

@+50-26 R T. Pole  
@+50-27 R Fee

26

Cult. field



Slough

@+68-30 R T. Pole low

@00-27 R Fee  
@00-25 R T. Pole

@+52-24 R 6" willow  
Stump

Grazing

@+40-50 R 5-6' willows

27

@+08-20 R 6" Willow  
E00-29 R 3" oak

@+15-45 R Com. Sign  
@+65-22 R T. Pole  
@+63-24 R Fee Cor.  
@+61-26 R Iron Rd. Sign

@+32-E Oakdale

@+0A-15L 1 Tree

@+20-65 R 15 oak

26

@+60-60 L Com. Sign

25

@00-24 R T. Pole

24+00

Golf Links

Clay Soil

Cult. field

Mendota Rd.

4-8-23

34 top

33

32

31

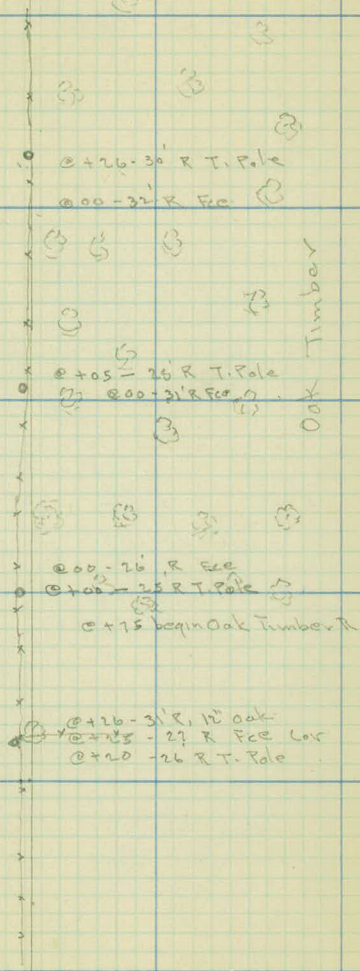
30

29 top

Cult. field

Cult. field

Pasture



Oak Timber

Mendota Rd.

4-8-23

L E R

39 top

Cult. field

@00-25' R Fce  
@198-23' R T. Pole

38

@28-20' R T. Pole  
@34-21' R Fce

37

@58' Edge left  
No. Culivineata

Pond

@50-200 left  
edge Pond

@10-26' R T. Pole  
@00-26' R Fce

36

@00-23' R Fce  
@10-34' R 10 oak  
@10-22' R T. Pole

35

Cult. field

Oak Timber

34 top

Mendota Rd.

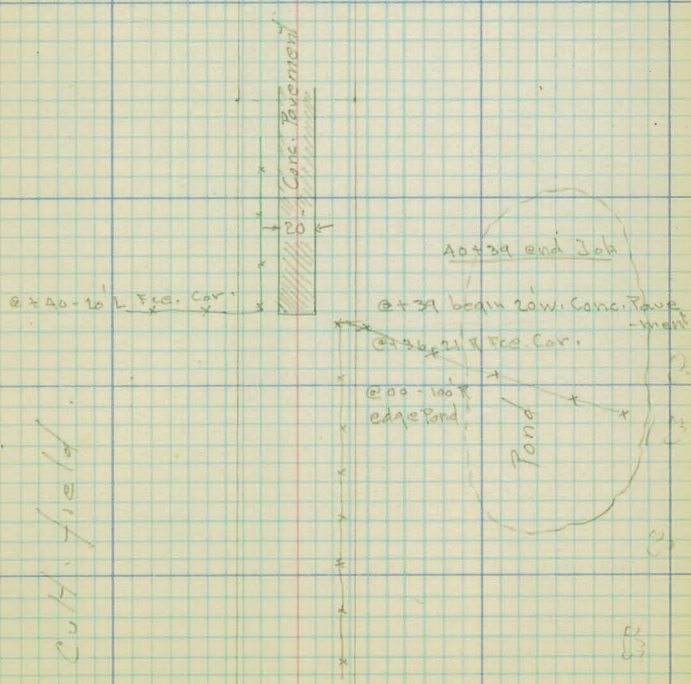
4-8-23

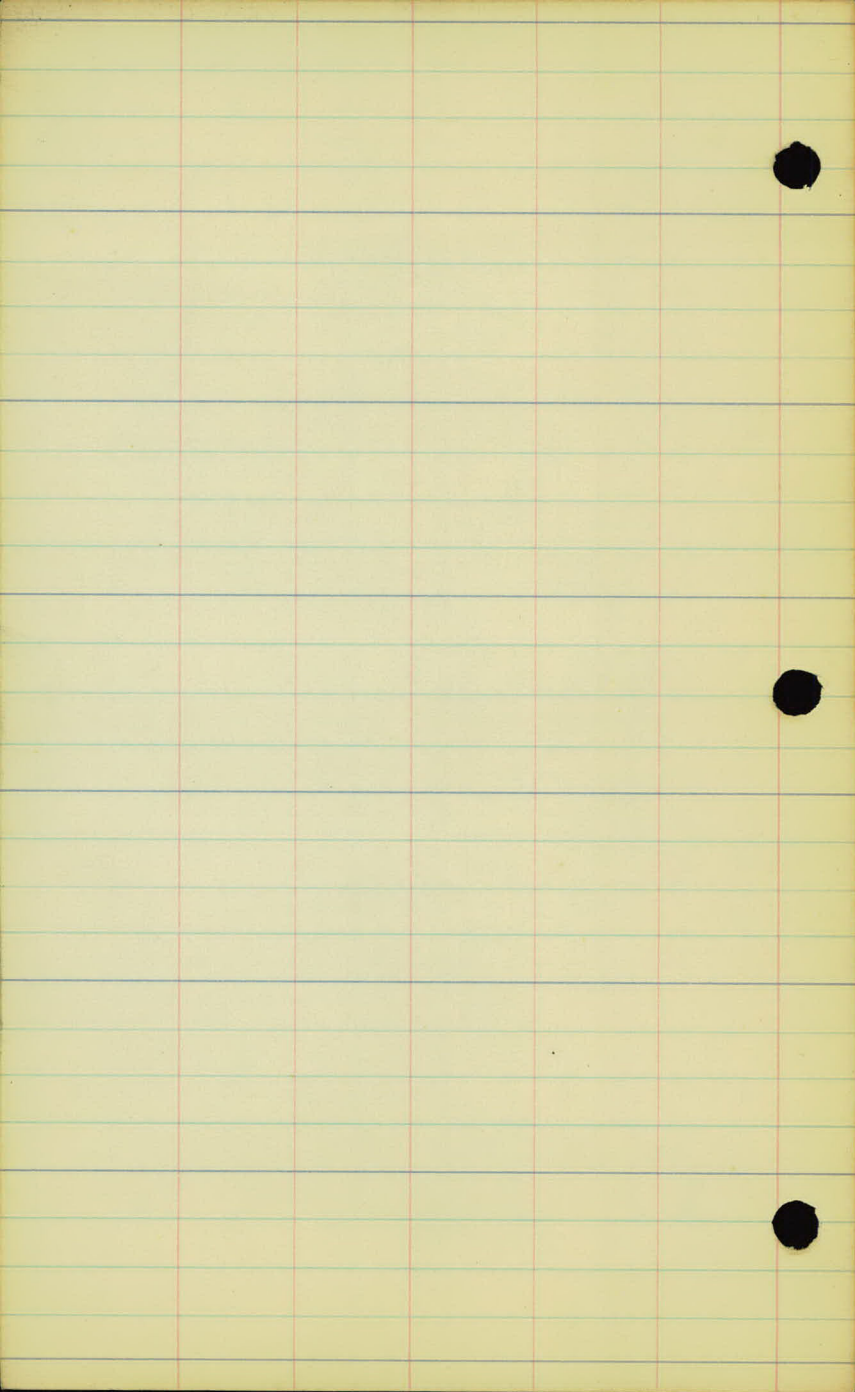
41

40

39+00

Cut. field





Check Levels  
Mendoza road.

Carley &  
Persons ✓

9/5/23

Check Levels.

Carley-Level Persons-Rod

|      | +            | H.I    | -           | Elev   | B.M.   |
|------|--------------|--------|-------------|--------|--------|
| B.M. | 6.44         | 269.69 |             |        | 263.25 |
| T.P. | 12.02        | 279.31 | 2.90        | 267.29 |        |
| T.P. | 9.56         | 288.59 | 0.28        | 279.03 |        |
| B.M. | 7.63         | 295.53 | 0.68        | 287.91 | 287.90 |
| T.P. | 12.58        | 306.60 | 1.51        | 294.02 |        |
| T.P. | 6.95         | 311.64 | 1.91        | 304.69 |        |
| B.M. | 11.23        | 319.54 | 3.33        | 308.31 | 308.29 |
| T.P. | 9.12         | 328.66 | 0.00        | 319.54 |        |
|      | <u>75.53</u> |        | <u>5.50</u> | 323.16 | 323.13 |
|      |              |        | 15.61       |        |        |

|              |               |
|--------------|---------------|
| 75.53        | 323.16        |
| <u>15.61</u> | <u>263.25</u> |
| 59.92        | 59.92         |

R.R. spike in tele pole R of sta.

R.R. spike in tele. pole R of sta 23+00

R.R. spike in tele pole R of sta 9+95

Spike in small tele pole at SW corner  
S. Robert + Mendota rd.

Sheet # 2 of 2 sheets

£ Levels on the  
Mendota road.

9/9, 5, 6/23

M. W. Carley

Sta. + H.I. - Rod Elev.

B.M. 3.60 326.73 ✓ 323.13

0+00 4.5 322.2 ✓

W.

N.

S.

0+17 5.1 321.6 ✓

+50 6.7 320.0 ✓

1 8.8 317.9 ✓

B.M. 3.66 326.79 ✓ 323.13

2 11.5 315.3 ✓

3 11.0 315.8 ✓

+50 9.6 317.2 ✓

4 7.3 319.5 ✓

+50 5.5 321.3 ✓

5 3.5 323.3 ✓

T.P. 3.70 326.75 374 323.05 ✓

+50 7.36 1.9 324.8 ✓

6 1.2 325.5 ✓

7 3.2 318.8 323.5 ✓

8 7.9 316.2 318.8 ✓

+50 10.5 316.2 ✓

T.P. 0.58 316.05 11.28 315.47 ✓

15.02

-15.02

7.36

7.66

323.13

315.47

7.66

Mendota rd. Levels & Carley-Level / Persons-Rod,

Spike in tele pole S.W. Cor S. Robert & Mendota  
& an intersection S. Robert & Mendota

|                  |                   |                    |                    |
|------------------|-------------------|--------------------|--------------------|
| $\frac{5.8}{50}$ | $\frac{7.2}{100}$ | $\frac{9.7}{150}$  | $\frac{12.4}{200}$ |
| $\frac{5.0}{17}$ | $\frac{9.0}{100}$ | $\frac{3.3}{200}$  | $\frac{2.6}{300}$  |
| $\frac{6.8}{58}$ | $\frac{9.8}{100}$ | $\frac{13.0}{150}$ | $\frac{15.0}{200}$ |

West on Mendota  
North on S. Robert  
South " " "

| Sta  | +    | H.I.        | -            | Rod           | Elev     |
|------|------|-------------|--------------|---------------|----------|
|      |      | 0.58        | 316.05       |               |          |
| 9    |      |             |              | 2.7           | 313.3    |
|      | +50  |             |              | 5.5           | 310.5    |
| B.M. |      |             |              | 7.76          | 308.29 ✓ |
| 10   |      |             |              | 7.5           | 308.5 ✓  |
| 11   |      |             |              | 11.3          | 304.7 ✓  |
|      | T.P. | <u>1.26</u> | 306.49       | 10.82         | 305.23 ✓ |
|      | +50  | 1.84        |              | 3.3           | 303.2 ✓  |
| 12   |      |             |              | 4.4           | 302.1 ✓  |
|      | +50  |             |              | 5.1           | 301.4 ✓  |
| 13   |      |             |              | 6.5           | 300.0 ✓  |
|      | +50  |             |              | 8.0           | 298.5 ✓  |
| 14   |      |             |              | 9.7           | 296.8 ✓  |
|      | +50  |             |              | 11.3          | 295.2 ✓  |
|      | T.P. | 0.19        | 295.92 ✓     | 10.76         | 295.73 ✓ |
| 15   |      |             | <u>21.58</u> | 1.5           | 294.4 ✓  |
|      | +50  |             |              | 3.3           | 292.6 ✓  |
| 16   |      |             |              | 4.4           | 291.5 ✓  |
|      | +50  |             |              | 5.4           | 290.5 ✓  |
| 17   |      |             |              | 6.3           | 289.6 ✓  |
|      | +50  |             |              | 7.2           | 288.7 ✓  |
| 18   |      |             |              | 7.7           | 288.2 ✓  |
|      | +21  |             |              | 7.7           | 288.2 ✓  |
|      |      | 21.58       |              | 315.47        |          |
|      |      | <u>1.84</u> |              | <u>295.73</u> |          |
|      |      | 19.74       |              | 19.74         |          |

M.W. Carley

Mendota rd. levels Carley & Persons

R.R. spike in tele pole R of sta 9+95

Farm entrance on L

Sta + H.I. - Rod Elev  
 0.19 295.92

|    |      |             |          |              |          |
|----|------|-------------|----------|--------------|----------|
| 19 |      |             |          | 7.5          | 288.9 ✓  |
| 20 |      |             |          | 6.4          | 289.5 ✓  |
|    | +50  |             |          | 5.9          | 290.0 ✓  |
| 21 |      |             |          | 5.6          | 290.3 ✓  |
|    | +33  |             |          | 5.6          | 290.3 ✓  |
| 22 |      |             |          | 6.8          | 289.1 ✓  |
| 23 |      |             |          | 10.0         | 285.9 ✓  |
|    | B.M. | 1.50        | 289.40 ✓ | 8.02         | 287.90 ✓ |
| 23 | +50  |             |          | 5.2          | 284.2 ✓  |
| 24 | +00  |             |          | 8.1          | 281.3 ✓  |
| 24 | +50  |             |          | 10.6         | 278.8 ✓  |
|    | T.P. | 0.90        | 280.01 ✓ | 10.29        | 279.11 ✓ |
|    |      | <u>2.59</u> |          |              |          |
| 25 |      |             |          | 4.1          | 275.9 ✓  |
| 26 |      |             |          | 9.8          | 270.2 ✓  |
|    | B.M. | 4.17        | 272.57 ✓ | 11.61        | 268.90 ✓ |
|    | +45  |             |          | <u>27.92</u> | 268.6 ✓  |

N.

S.

4/6/

|             |               |
|-------------|---------------|
| 29.92       | 295.73        |
| <u>2.59</u> | <u>268.10</u> |
| 27.33       | 27.33         |

Mendota rd. levels Carley & Parsons

P.O.T.

R.R. spike in tele pole R of sta. 23+00

R.R. spike in tele pole R of sta  
X road intersection

|                  |                   |                   |                   |
|------------------|-------------------|-------------------|-------------------|
| $\frac{3.5}{80}$ | $\frac{2.0}{100}$ | $\frac{0.9}{150}$ | $\frac{0.8}{200}$ |
|------------------|-------------------|-------------------|-------------------|

North on X road

|                  |                   |                   |                   |
|------------------|-------------------|-------------------|-------------------|
| $\frac{6.1}{50}$ | $\frac{7.6}{100}$ | $\frac{8.0}{150}$ | $\frac{9.5}{200}$ |
|------------------|-------------------|-------------------|-------------------|

South " "

Sta + H.I. - Rod Elev.

4.17 272.57

27 6.1 266.5 ✓

+50 6.9 265.7 ✓

28 7.2 265.5 ✓

+50 7.2 265.4 ✓

29 7.2 265.4 ✓

+50 6.8 265.8 ✓

30 6.5 265.1 ✓

+50 5.8 266.8 ✓

31 5.0 267.6 ✓

T.P. 5.05 272.74 4.88 267.69 ✓

+50 9.22 5.0 267.7 ✓

32 4.7 268.0 ✓

33 4.6 268.1 ✓

34 5.7 267.0 ✓

35 6.4 266.3 ✓

TIP. 2.22 269.43 5.53 267.21 ✓

BC +45 10.41 3.7 265.7 ✓

36 4.3 265.1 ✓

+50 4.7 263.7 ✓

37 5.1 264.3 ✓

+50 5.4 264.0 ✓

38 5.7 263.7 ✓

10.41 268.10

9.22 267.21

1.19 1.19

265.4

266.1

264.7

Mendota rd. levels Carley & Parsons /

rb

Sta. + H.I. - Rod Elev

2.22 269.43

39 7.2 262.2 ✓

40 8.1 261.3 ✓

+39 8.3 261.1 ✓

B.M. 6.17 263.26 ✓

41 8.3 261.1 ✓

+90 paving 11.3 258.1 ✓

42 11.9 257.5 ✓

+50

43

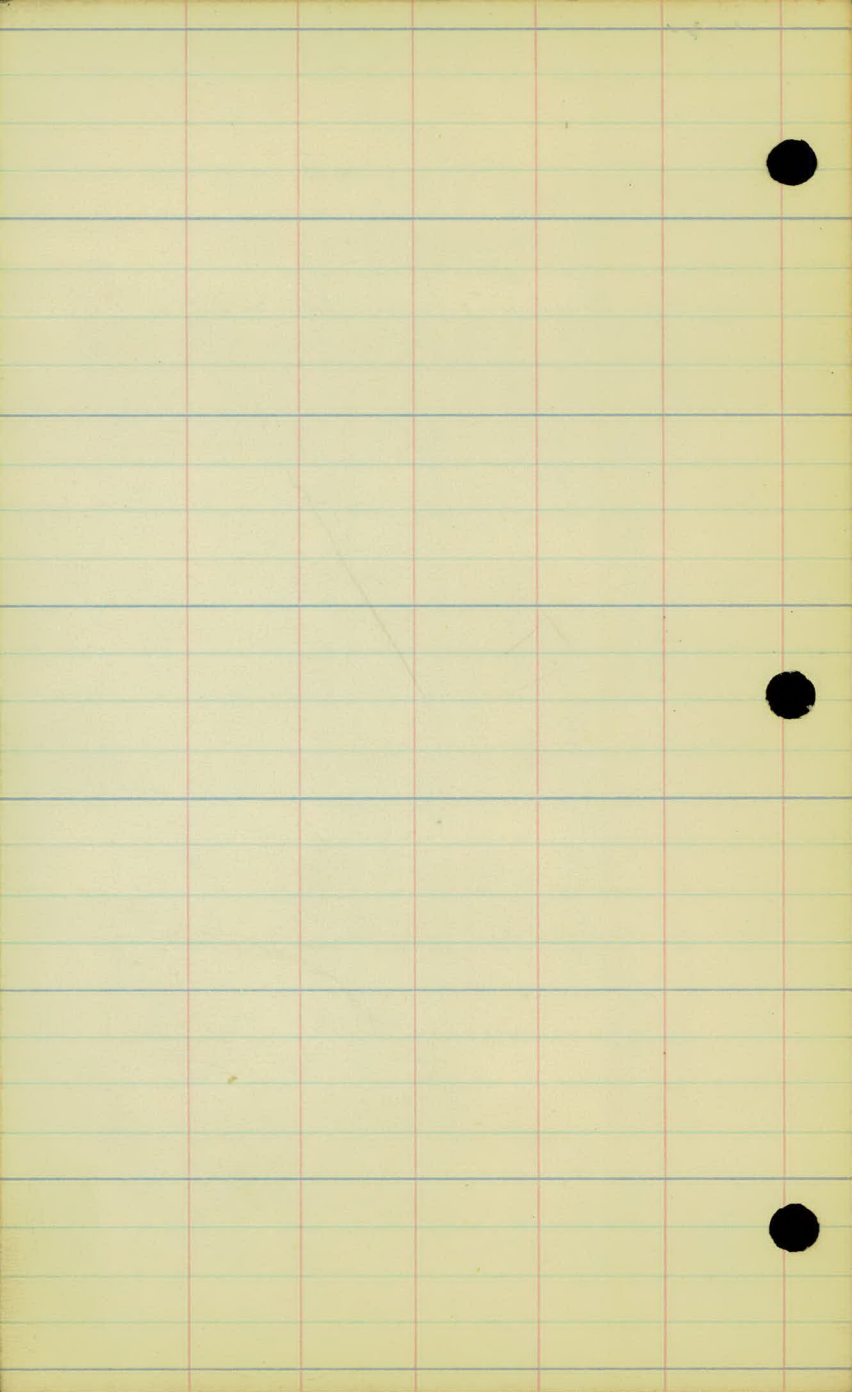
+50

44

Mendota rd. levels Corley & Persons ✓

End of paving  
R.R. spike in tele. pole R of sta 40+39

5.5



Mendota road

Xsections  
April 6, 7, 1923

- Carley-Recording
- Persons-Hand-level
- Carr -Tape
- Mahoney-Rod.

|      |       |       |        |
|------|-------|-------|--------|
| Sta  | Elev  |       |        |
| 8+50 | 316.2 |       |        |
| 8+00 | 316.2 | 318.8 |        |
| 7+00 | 318.8 | 323.5 |        |
| 6+00 | 325.5 |       |        |
| 5+50 | 324.8 |       | clay   |
| 4+75 | 322.3 |       |        |
| +90  | 319.0 |       |        |
| +50  | 317.2 |       | Gravel |
| 3    | 315.6 | 315.8 |        |
| 2    | 315.3 |       |        |
| 1    | 317.9 |       | clay   |
| +50  | 320.0 |       |        |
| 0+17 | 321.6 |       | X X    |

Mendota rd. sections

(24)

$$\frac{-6.3}{83} \quad \frac{-6.3}{26} \quad \frac{-5.3}{20} \quad \frac{-0.9}{10} \quad \frac{-0.7}{5} \quad \frac{-0.8}{15} \quad \frac{-2.1}{19} \quad \frac{+1.0}{25} \quad \frac{0.0}{29} \quad \frac{-0.5}{33}$$

$$\frac{+5.0}{33} \quad \frac{+3.5}{18} \quad \frac{-1.0}{12} \quad \frac{-0.7}{5} \quad \frac{-0.9}{13} \quad \frac{-2.1}{18} \quad \frac{-2.0}{20} \quad \frac{-0.4}{23} \quad \frac{-1.0}{29} \quad \frac{-1.0}{33}$$

$$\frac{+5.0}{33} \quad \frac{+3.6}{18} \quad \frac{-0.6}{13} \quad \frac{-0.5}{5} \quad \frac{-1.0}{16} \quad \frac{-1.5}{20} \quad \frac{+1.0}{25}$$

$$\frac{+3.4}{33} \quad \frac{+3.2}{19} \quad \frac{-0.8}{10} \quad \frac{-0.5}{15} \quad \frac{-1.5}{19} \quad \frac{+1.0}{23} \quad \frac{-1.0}{33}$$

$$\frac{+4.0}{33} \quad \frac{+4.0}{18} \quad \frac{-1.0}{9} \quad \frac{-1.0}{15} \quad \frac{-1.5}{17} \quad \frac{+1.5}{24} \quad \frac{0.0}{33}$$

$$\frac{0.0}{33} \quad \frac{0.0}{17} \quad \frac{-1.2}{11} \quad \frac{-0.7}{8} \quad \frac{-1.0}{16} \quad \frac{-1.3}{18} \quad \frac{+1.0}{23} \quad \frac{+1.0}{33}$$

$$\frac{+4.0}{33} \quad \frac{+4.0}{21} \quad \frac{-1.0}{13} \quad \frac{-0.8}{10} \quad \frac{-0.8}{16} \quad \frac{-1.0}{19} \quad \frac{+2.0}{24} \quad \frac{+2.0}{33}$$

$$\frac{+1.5}{33} \quad \frac{+1.5}{29} \quad \frac{-1.5}{19} \quad \frac{-0.8}{8} \quad \frac{-0.5}{17} \quad \frac{-1.2}{19} \quad \frac{+1.0}{29} \quad \frac{+1.0}{33}$$

$$\frac{-4.0}{33} \quad \frac{-2.6}{19} \quad \frac{-0.7}{9} \quad \frac{-1.0}{17} \quad \frac{-2.5}{21} \quad \frac{-2.5}{33}$$

$$\frac{-9.0}{33} \quad \frac{-9.0}{25} \quad \frac{-0.8}{11} \quad \frac{-0.8}{17} \quad \frac{-5.0}{24} \quad \frac{-8.0}{36}$$

$$\frac{+1.5}{33} \quad \frac{0.0}{15} \quad \frac{-1.0}{12} \quad \frac{+0.5}{15} \quad \frac{-1.0}{25} \quad \frac{-3.0}{28} \quad \frac{-3.0}{33}$$

$$\frac{+3.8}{33} \quad \frac{+2.0}{18} \quad \frac{-0.9}{12} \quad \frac{-0.5}{8} \quad \frac{-1.0}{16} \quad \frac{+0.5}{21} \quad \frac{+1.0}{33}$$

$$\frac{-0.1}{33} \quad \frac{0.0}{27} \quad \frac{-0.5}{17} \quad \frac{-0.5}{11} \quad \frac{-0.5}{10} \quad \frac{-1.2}{17} \quad \frac{-0.7}{20} \quad \frac{0.0}{28} \quad \frac{2.0}{33}$$

7/7/23 sheet #2 of sheets

| Sta     | Elev.   |
|---------|---------|
| +50     | 292.6   |
| 15 + 00 | 294.4   |
| +50     | 295.2   |
| 14      | 296.8   |
| +50     | 298.5   |
| 13 + 25 | 299.2 ? |
| +50     | 301.4   |
| 12 + 50 | 302.1   |
| 12 + 50 | 303.2   |
| 11      | 304.7   |
| 10      | 308.5   |
| 1 + 50  | 310.5   |
| 9       | 313.3   |

Mendota rd. sections

$$\frac{-1.0}{33} \quad \frac{-0.1}{14} \quad \frac{-0.8}{11} \quad \frac{-0.8}{6} \quad \frac{-0.7}{19} \quad \frac{-2.9}{28} \quad \frac{-3.5}{33}$$

$$\frac{-5.9}{33} \quad \frac{-5.0}{15} \quad \frac{-1.0}{6} \quad \frac{-0.8}{18} \quad \frac{-3.7}{27} \quad \frac{-3.7}{33}$$

$$\frac{-8.1}{33} \quad \frac{-6.0}{18} \quad \frac{-0.9}{6} \quad \frac{-1.3}{21} \quad \frac{-2.4}{28} \quad \frac{-3.0}{33}$$

$$\frac{-7.3}{33} \quad \frac{-5.5}{20} \quad \frac{-0.8}{7} \quad \frac{-0.8}{18} \quad \frac{-0.9}{22} \quad \frac{+1.0}{27} \quad \frac{+1.3}{33}$$

$$\frac{-1.8}{33} \quad \frac{-1.0}{29} \quad \frac{+2.0}{13} \quad \frac{+0.7}{5} \quad \frac{-0.2}{16} \quad \frac{-0.8}{21} \quad \frac{+2.0}{26} \quad \frac{+1.8}{33}$$

$$\frac{+2.3}{33} \quad \frac{+3.6}{23} \quad \frac{+9.5}{16} \quad \frac{-0.9}{6} \quad \frac{-0.6}{16} \quad \frac{-1.1}{21} \quad \frac{+3.6}{27} \quad \frac{+2.4}{33}$$

$$\frac{+6.0}{33} \quad \frac{+6.0}{20} \quad \frac{-0.3}{11} \quad \frac{-0.7}{5} \quad \frac{-1.2}{16} \quad \frac{-1.8}{21} \quad \frac{+1.7}{27} \quad \frac{+0.7}{33}$$

$$\frac{+3.0}{33} \quad \frac{+2.7}{15} \quad \frac{-1.0}{7} \quad \frac{-1.2}{15} \quad \frac{-1.8}{19} \quad \frac{-0.6}{23} \quad \frac{-1.8}{33}$$

$$\frac{-1.6}{33} \quad \frac{-1.6}{16} \quad \frac{-1.9}{11} \quad \frac{-0.7}{7} \quad \frac{-0.8}{18} \quad \frac{-3.1}{24} \quad \frac{-9.6}{33}$$

$$\frac{-7.5}{33} \quad \frac{-6.7}{19} \quad \frac{-0.8}{7} \quad \frac{-0.8}{18} \quad \frac{-6.2}{27} \quad \frac{-6.2}{33}$$

$$\frac{+6.6}{33} \quad \frac{+5.6}{20} \quad \frac{-0.4}{9} \quad \frac{-0.9}{18} \quad \frac{-2.6}{24} \quad \frac{-2.8}{30} \quad \frac{-2.8}{33}$$

$$\frac{-0.8}{33} \quad \frac{0.0}{17} \quad \frac{-0.8}{14} \quad \frac{-1.1}{10} \quad \frac{-0.7}{17} \quad \frac{-1.7}{23} \quad \frac{-0.7}{26} \quad \frac{-0.6}{33}$$

$$\frac{+5.0}{33} \quad \frac{+5.0}{26} \quad \frac{+5.2}{20} \quad \frac{-1.3}{8} \quad \frac{-1.0}{5} \quad \frac{-0.7}{15} \quad \frac{-1.5}{19} \quad \frac{+1.0}{26} \quad \frac{+0.6}{29} \quad \frac{+0.3}{33}$$

| Sta    | Elev. |
|--------|-------|
| 24     | 281.3 |
| +50    | 284.2 |
| 23     | 285.9 |
| 22     | 289.1 |
| +33.9  | 290.3 |
| 21     | 290.3 |
| +50    | 290.0 |
| 20     | 289.5 |
| 19     | 288.4 |
| 18 +50 | 288.2 |
| 17 +50 | 288.7 |
| +50    | 290.5 |
| 16     | 291.5 |

Mendoza rd. sections

$$\frac{+4.0}{33} \quad \frac{+2.5}{15} \quad \frac{-0.6}{5} \quad \frac{-0.7}{20} \quad \frac{-1.1}{25} \quad \frac{0.0}{28} \quad \frac{-0.3}{33}$$

$$\frac{+1.5}{33} \quad \frac{+2.6}{14} \quad \frac{-0.6}{5} \quad \frac{-1.0}{23} \quad \frac{+1.8}{30} \quad \frac{+1.0}{35}$$

$$\frac{+1.5}{33} \quad \frac{+2.3}{13} \quad \frac{-0.6}{5} \quad \frac{-1.4}{23} \quad \frac{+0.3}{28} \quad \frac{-0.8}{35}$$

$$\frac{+2.1}{33} \quad \frac{+2.2}{13} \quad \frac{-0.6}{5} \quad \frac{-1.3}{21} \quad \frac{+1.8}{28} \quad \frac{0.0}{40}$$

$$\frac{+4.3}{33} \quad \frac{+4.8}{16} \quad \frac{-0.5}{5} \quad \frac{-1.0}{21} \quad \frac{+1.5}{27} \quad \frac{-0.7}{38}$$

$$\frac{+5.1}{33} \quad \frac{+5.0}{30} \quad \frac{+3.9}{16} \quad \frac{-0.6}{10} \quad \frac{-1.3}{24} \quad \frac{-1.0}{34} \quad \frac{-5.1}{41}$$

$$\frac{+2.3}{33} \quad \frac{+0.8}{15} \quad \frac{-0.7}{5} \quad \frac{-1.1}{23} \quad \frac{-6.2}{35}$$

$$\frac{0.0}{33} \quad \frac{-2.1}{11} \quad \frac{-0.8}{5} \quad \frac{-1.2}{22} \quad \frac{-6.2}{34}$$

$$\frac{-2.5}{33} \quad \frac{-3.0}{10} \quad \frac{-0.7}{4} \quad \frac{-1.0}{21} \quad \frac{-6.7}{31} \quad \frac{-7.7}{40}$$

$$\frac{+1.3}{33} \quad \frac{-0.3}{14} \quad \frac{-0.8}{11} \quad \frac{-0.7}{5} \quad \frac{-1.2}{22} \quad \frac{-1.2}{29} \quad \frac{-5.0}{33}$$

$$\frac{+2.0}{33} \quad \frac{+2.0}{14} \quad \frac{-0.6}{5} \quad \frac{-1.0}{22} \quad \frac{-2.5}{31} \quad \frac{-1.5}{40}$$

$$\frac{+4.8}{33} \quad \frac{+4.2}{17} \quad \frac{-0.5}{5} \quad \frac{-1.2}{24} \quad \frac{-3.3}{33} \quad \frac{-3.8}{41}$$

$$\frac{+2.8}{33} \quad \frac{+2.2}{15} \quad \frac{-1.1}{11} \quad \frac{-1.2}{19} \quad \frac{-2.2}{26} \quad \frac{-3.3}{33}$$

50 Elev  
+50 266.8

30 265.1 266.1

+50 265.8

29 265.4

+50 265.4

28 265.5 265.4

27 266.5

+58 268.6

~~55~~

+95

+17 269.7x

26 270.2

25 275.9

24+50 278.8

$$\frac{+0.7}{33} \quad \frac{+0.3}{29} \quad \frac{-1.7}{26} \quad \frac{-2.1}{21} \quad \frac{-0.9}{18} \quad \frac{-0.5}{15} \quad \frac{-3.1}{27} \quad \frac{-3.1}{33}$$

$$\frac{+1.7}{33} \quad \frac{+1.7}{29} \quad \frac{-2.6}{21} \quad \frac{-0.7}{17} \quad \frac{-0.2}{12} \quad \frac{-2.7}{18} \quad \frac{-3.9}{28} \quad \frac{-3.9}{33}$$

$$- \quad \frac{-1.5}{33} \quad \frac{-1.7}{29} \quad \frac{-3.9}{25} \quad \frac{-1.1}{18} \quad \frac{-0.6}{13} \quad \frac{-2.2}{17} \quad \frac{-3.5}{21} \quad \frac{-3.5}{27} \quad \frac{-1.0}{28} \quad \frac{+1.1}{33}$$

$$\frac{-5.2}{33} \quad \frac{-4.6}{28} \quad \frac{-1.0}{18} \quad \frac{-0.5}{15} \quad \frac{-3.9}{19} \quad \frac{-3.4}{26} \quad \frac{+2.2}{30} \quad \frac{+3.1}{33}$$

$$\frac{-5.9}{33} \quad \frac{-5.7}{31} \quad \frac{-1.0}{18} \quad \frac{-0.5}{15} \quad \frac{-4.7}{23} \quad \frac{-5.0}{29} \quad \frac{-3.5}{32} \quad \frac{-3.5}{33}$$

$$\frac{-7.5}{35} \quad \frac{-1.8}{22} \quad \frac{-0.6}{17} \quad \frac{-0.5}{13} \quad \frac{-5.9}{24} \quad \frac{-5.7}{30} \quad \frac{-5.4}{33}$$

$$\frac{-5.3}{33} \quad \frac{-0.7}{20} \quad \frac{-0.7}{10} \quad \frac{-6.0}{24} \quad \frac{-6.2}{33}$$

$$\frac{0.0}{33} \quad \frac{0.0}{22} \quad \frac{-0.3}{16} \quad \frac{-1.2}{24} \quad \frac{-1.6}{33} \quad \text{Edge of road}$$

Kroad Level

$$\frac{+1.3}{33} \quad \frac{-1.0}{22} \quad \frac{0.0}{15} \quad \frac{+0.9}{11} \quad \frac{-1.0}{16} \quad \frac{-1.6}{26} \quad \frac{-1.2}{35} \quad \frac{+0.6}{38}$$

$$\frac{+2.1}{36} \quad \frac{+0.8}{21} \quad \frac{-1.2}{16} \quad \frac{-0.1}{12} \quad \frac{-0.5}{15} \quad \frac{-1.4}{22} \quad \frac{-0.7}{32} \quad \frac{+2.1}{37}$$

$$\frac{+8.0}{33} \quad \frac{+5.0}{17} \quad \frac{-0.6}{16} \quad \frac{-0.3}{16} \quad \frac{-0.7}{22} \quad \frac{+0.5}{26} \quad \frac{+0.3}{33}$$

$$\frac{+7.5}{33} \quad \frac{+5.0}{17} \quad \frac{-1.5}{8} \quad \frac{-0.5}{4} \quad \frac{-0.7}{18} \quad \frac{-1.3}{23} \quad \frac{-0.3}{27} \quad \frac{-0.9}{33}$$

5th

Elev

+50

264.0 .

37

264.3 .

+50

263.7 264.7

36

265.1 .

+50

265.7 .

35

266.3 .

+50

66.7

34

267.0 .

33

268.1 .

+50

69.0

32

268.0 .

+50

267.7 .

31

267.6 .

$$\frac{-4.0}{33} \quad \frac{-3.5}{21} \quad \frac{-0.3}{14} \quad \frac{-0.8}{15} \quad \frac{-5.3}{25} \quad \frac{-5.7}{33}$$

$$\frac{-3.3}{33} \quad \frac{-3.1}{25} \quad \frac{-2.1}{19} \quad \frac{0.0}{14} \quad \frac{-0.7}{15} \quad \frac{-2.7}{20} \quad \frac{-3.5}{25} \quad \frac{-4.0}{33}$$

$$\frac{-2.5}{33} \quad \frac{-2.4}{23} \quad \frac{0.0}{14} \quad \frac{-1.0}{16} \quad \frac{-1.8}{20} \quad \frac{-2.0}{24} \quad \frac{-2.0}{33}$$

$$\frac{-2.3}{33} \quad \frac{-2.6}{22} \quad \frac{-0.1}{15} \quad \frac{-0.6}{15} \quad \frac{-1.6}{19} \quad \frac{-2.5}{27} \quad \frac{-2.5}{33}$$

$$\frac{-4.0}{33} \quad \frac{-3.1}{21} \quad \frac{0.0}{15} \quad \frac{-0.8}{14} \quad \frac{-1.8}{18} \quad \frac{-1.7}{23} \quad \frac{-1.7}{33}$$

$$\frac{+0.6}{33} \quad \frac{+0.5}{25} \quad \frac{-1.5}{24} \quad \frac{-1.5}{19} \quad \frac{0.0}{15} \quad \frac{-1.1}{12} \quad \frac{-2.5}{19} \quad \frac{-5.0}{25} \quad \frac{-6.5}{33}$$

$$\frac{+5.3}{33} \quad \frac{+5.1}{29} \quad \frac{-0.8}{18} \quad \frac{-0.5}{15} \quad \frac{-0.7}{13} \quad \frac{-1.8}{18} \quad \frac{-1.5}{21} \quad \frac{-2.5}{25} \quad \frac{-4.2}{33}$$

$$\frac{+4.0}{33} \quad \frac{+4.5}{29} \quad \frac{-4.3}{17} \quad \frac{-4.3}{17} \quad \frac{-0.5}{15} \quad \frac{-1.0}{13} \quad \frac{-1.5}{17} \quad \frac{+1.5}{28} \quad \frac{-2.5}{33}$$

$$\frac{+3.3}{33} \quad \frac{+3.3}{29} \quad \frac{-1.5}{25} \quad \frac{-1.5}{18} \quad \frac{-0.7}{15} \quad \frac{-0.7}{15} \quad \frac{-1.2}{19} \quad \frac{+1.4}{24} \quad \frac{+0.3}{33}$$

$$\frac{+6.5}{33} \quad \frac{-1.3}{20} \quad \frac{-0.5}{17} \quad \frac{-0.8}{13} \quad \frac{-0.5}{16} \quad \frac{-1.4}{22} \quad \frac{+1.2}{27} \quad \frac{+0.6}{33}$$

$$\frac{+8.0}{33} \quad \frac{+6.5}{30} \quad \frac{-1.8}{20} \quad \frac{-0.7}{16} \quad \frac{-0.3}{15} \quad \frac{-1.1}{17} \quad \frac{-1.1}{21} \quad \frac{-0.4}{24} \quad \frac{-1.5}{33}$$

$$\frac{+2.7}{33} \quad \frac{+2.5}{29} \quad \frac{+1.6}{21} \quad \frac{-1.6}{21} \quad \frac{-0.8}{17} \quad \frac{-0.8}{16} \quad \frac{-1.7}{20} \quad \frac{-3.0}{25} \quad \frac{-4.0}{33}$$

$$\frac{+0.6}{33} \quad \frac{-2.1}{28} \quad \frac{-3.0}{21} \quad \frac{-0.7}{19} \quad \frac{-0.7}{14} \quad \frac{-2.9}{19} \quad \frac{-2.7}{24} \quad \frac{-2.6}{33}$$

Sta

Elev

+39

261.1 .

40

261.3 .

39

262.2 .

38

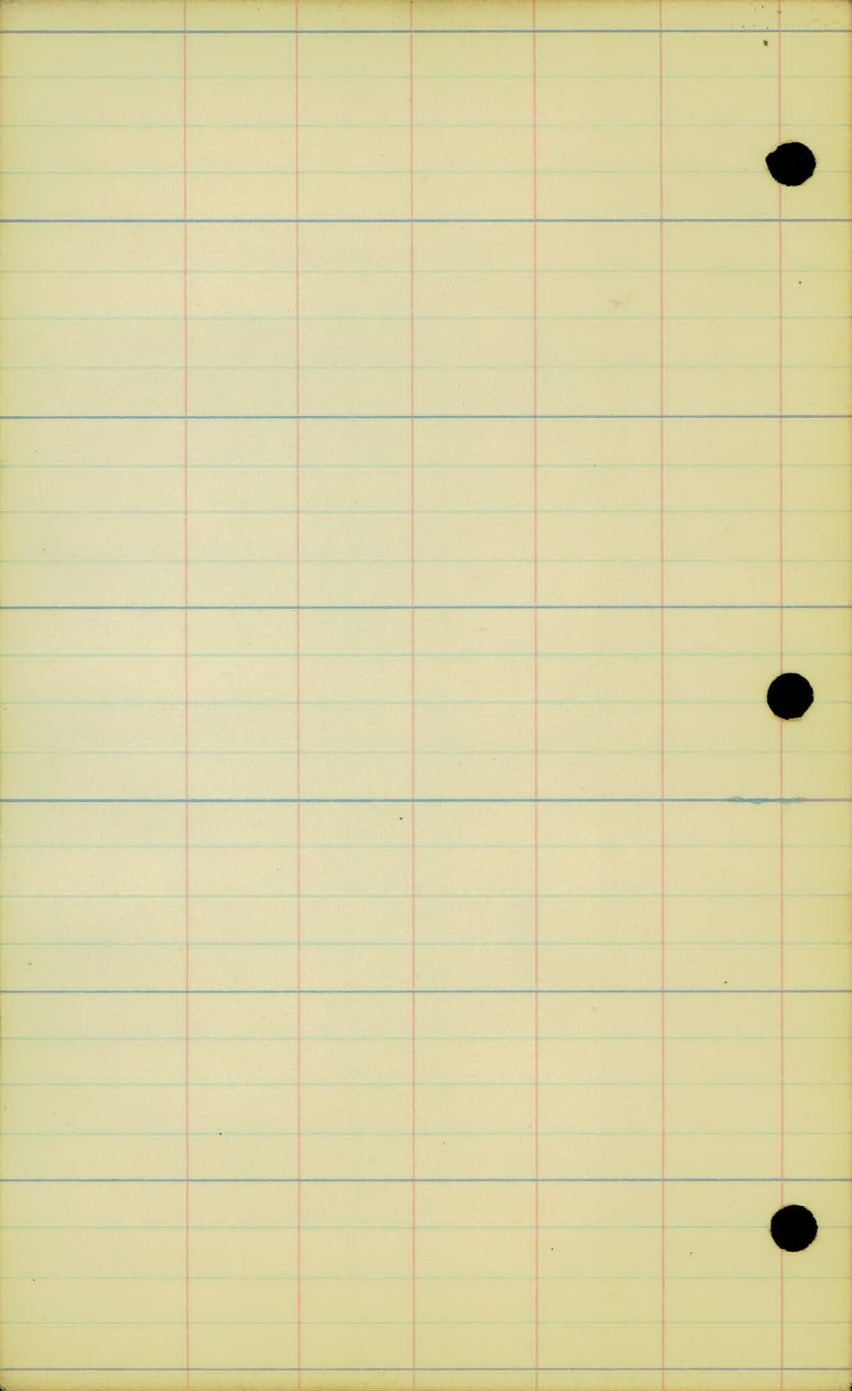
263.7 .

$$\frac{-1.0}{33} \quad \frac{+0.5}{21} \quad \frac{-0.8}{19} \quad \frac{-0.8}{16} \quad \frac{-0.7}{15} \quad \frac{-0.3}{12} \quad \frac{-0.5}{15} \quad \frac{-0.6}{18} \quad \frac{+2.1}{21} \quad \frac{+0.5}{33}$$

$$\frac{-1.4}{33} \quad \frac{-1.4}{28} \quad \frac{-0.3}{23} \quad \frac{-1.3}{20} \quad \frac{-1.3}{16} \quad \frac{-0.4}{15} \quad \frac{-0.5}{13} \quad \frac{-0.9}{15} \quad \frac{-1.0}{18} \quad \frac{+1.6}{22} \quad \frac{+0.3}{33}$$

$$\frac{-2.1}{33} \quad \frac{-2.9}{28} \quad \frac{-2.0}{23} \quad \frac{-2.0}{19} \quad \frac{-0.5}{15} \quad \frac{-0.5}{15} \quad \frac{-1.7}{18} \quad \frac{-1.7}{22} \quad \frac{+0.7}{23} \quad \frac{-1.0}{33}$$

$$\frac{0.0}{33} \quad \frac{-1.1}{23} \quad \frac{-2.0}{18} \quad \frac{-0.5}{14} \quad \frac{-0.5}{14} \quad \frac{-2.9}{20} \quad \frac{-1.2}{28} \quad \frac{-5.3}{33}$$





Mendota Rd. 4-8-23

## Culverts.

26+30 Put in 60'-18" Culv. under Oakdale  
on Left.

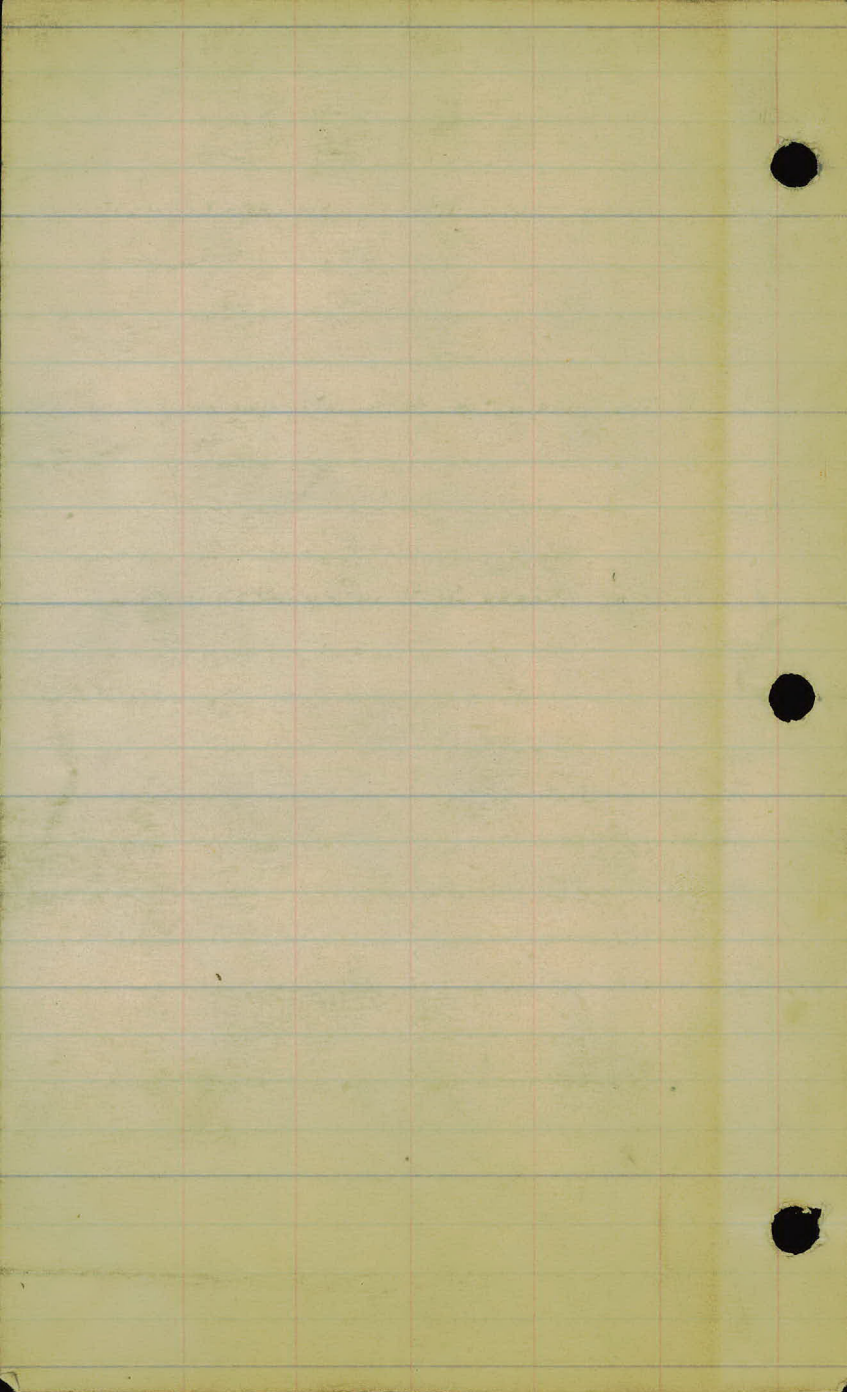
18+75 Put in 40'-18" Culv. under Mendota Rd

11+00 Put in 40'-18" Culv. under Mendota Rd

To drain side ditch - on Mendota Rd west.

To drain side ditch on No. into hole on south.

to drain hole on South into pond on North.



Project 23-59

Wendota Road.

Work on plans  
discontinued.

5-12-23

Order of P.W.C.

U 2453