

OFFICE OF COUNTY ENGINEER
RAMSEY CO. MINN.

Plan Survey

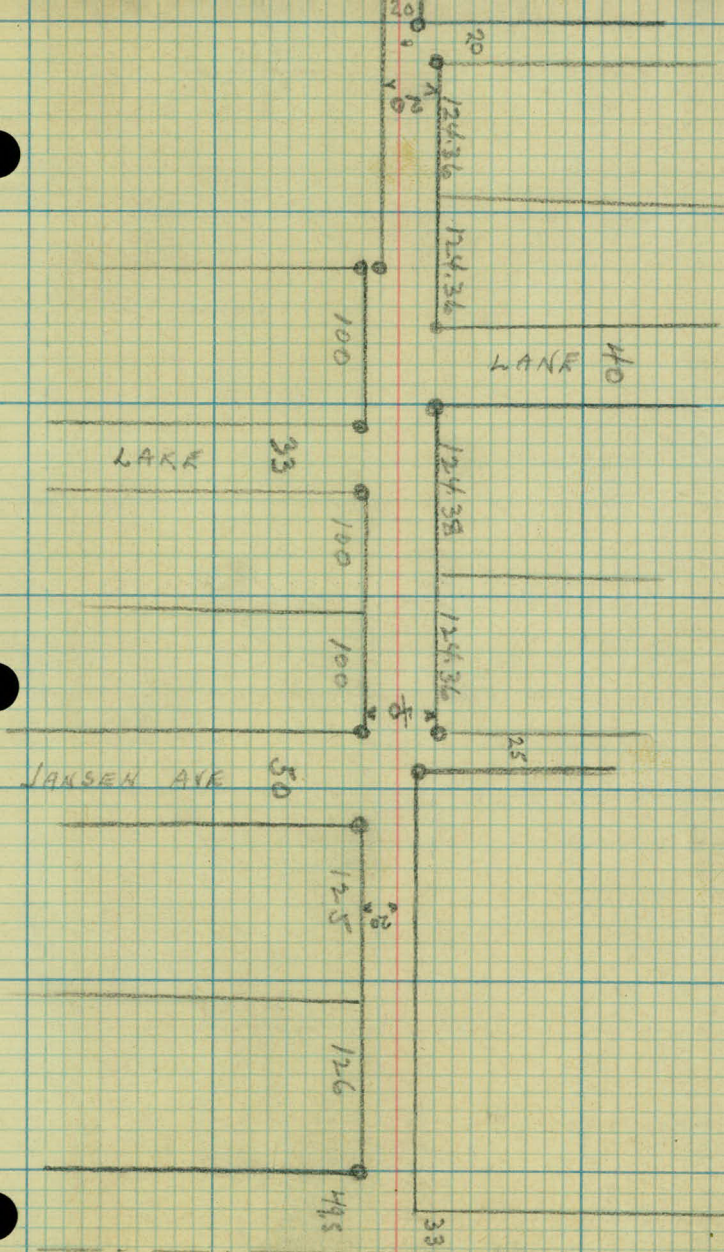
EDGEWATER ST.

From Lexington Ave Co 900' West.

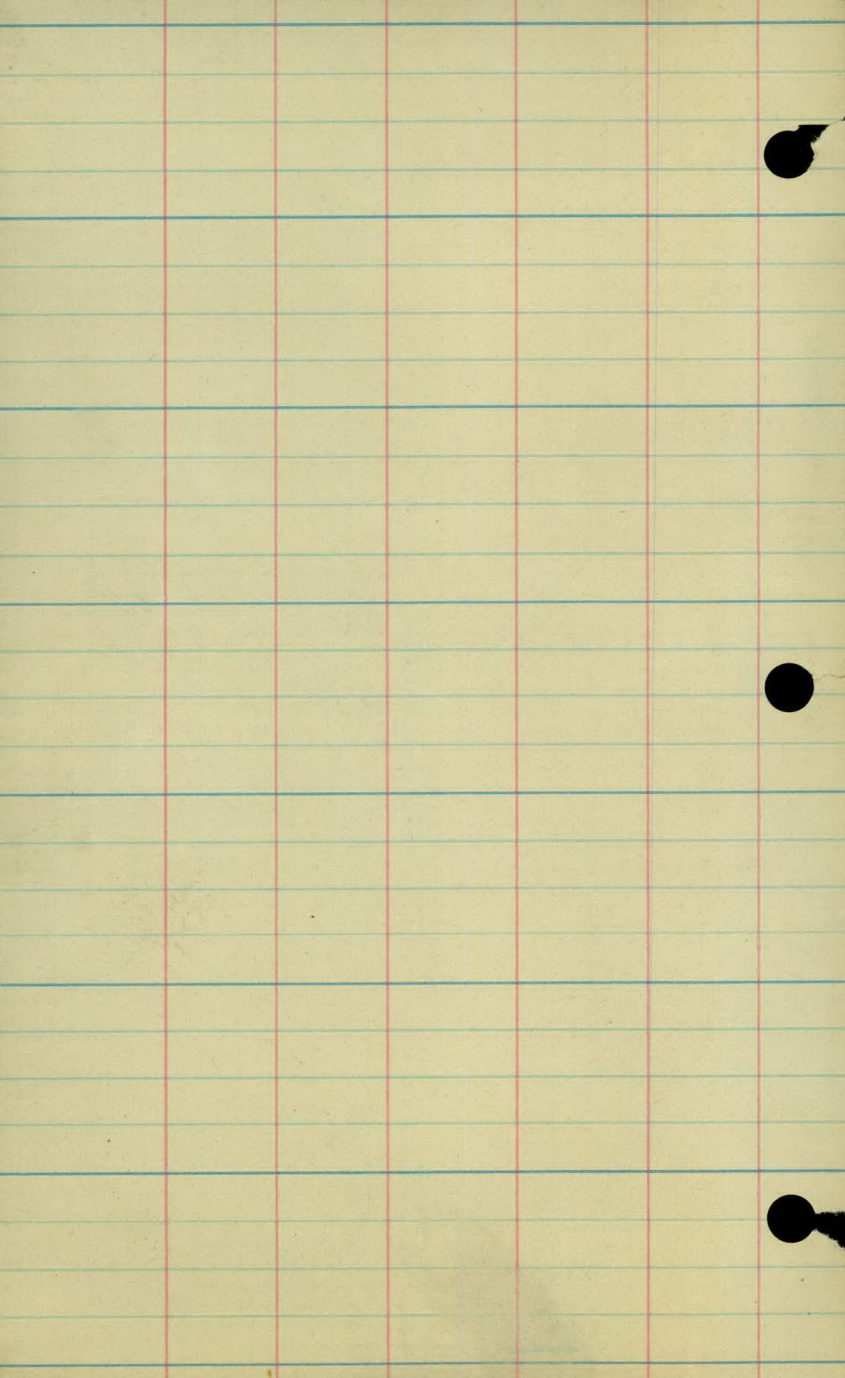
Road Acc't. No. M-31

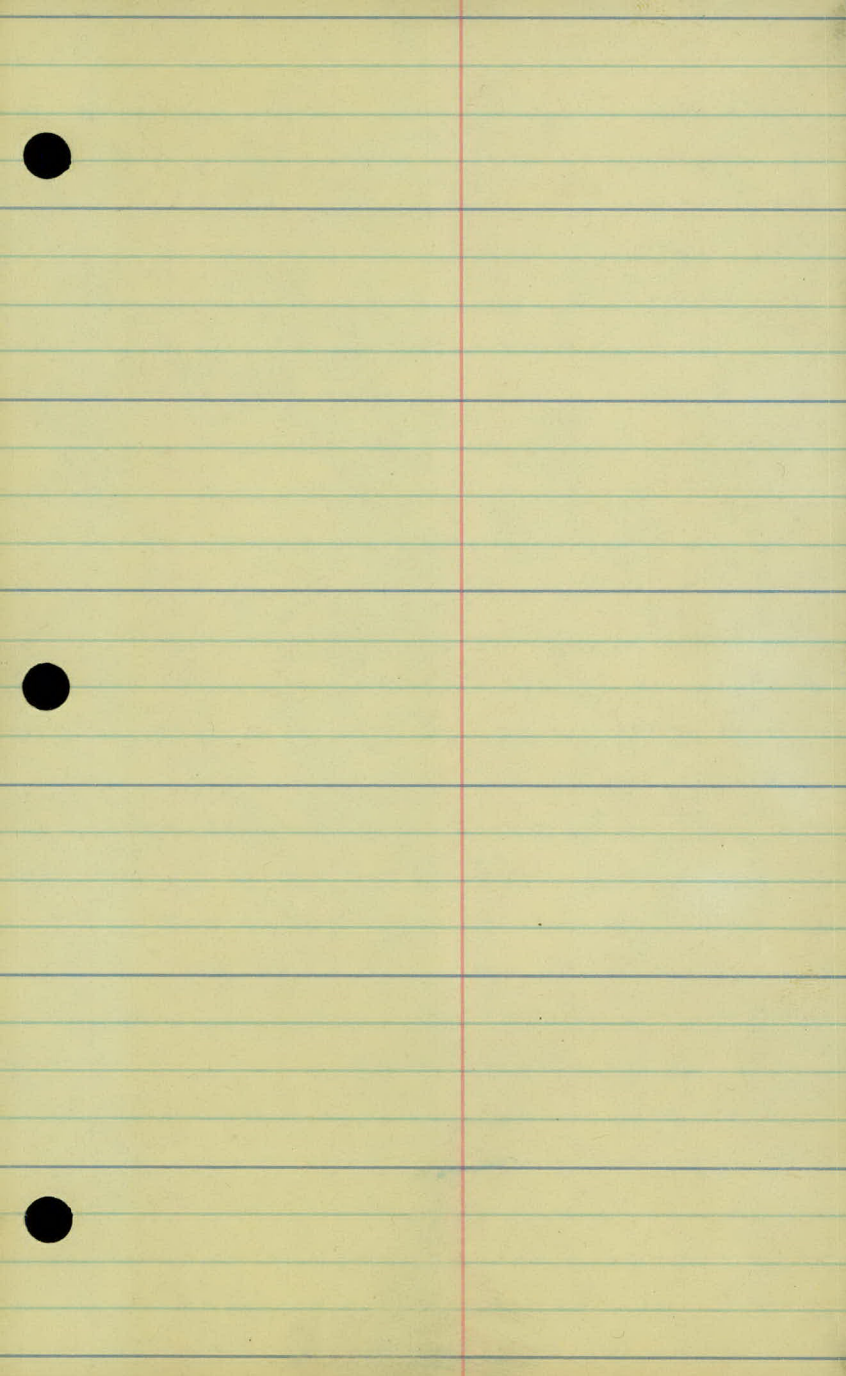
Date Filed 10-30-34

File Dr. 11A-Bk 14



Lexington





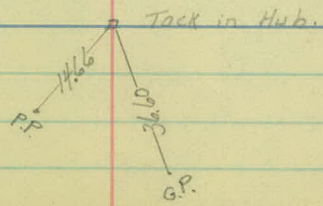
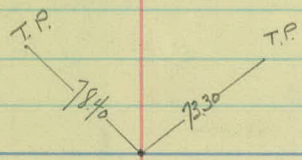
Edgewater Road

8+96.6 & Lexington Ave. Pkt.

0+00

10-30-34

F.O.C.
G.M.
C.S.
W.H.



Edgewater Rd.

BM	8.87	208.87 ✓		200.00
0-50				95.8
0+00				98.7
+30				00.7
+50				01.8
+78				02.0
+84				01.8
1+00				01.1 ✓
T.P.	3.04	201.28 ✓	10.63	198.24 ✓
1+32				99.1
+50				97.4
2+00				92.9 ✓
T.P.	10.82	201.90 ✓	10.18	191.08 ✓
+50				91.1
3+00				94.1

Two Nails in P.P. 11' Left of Sta. 0-11

$$\frac{12.3}{30} \quad \frac{12.8}{20} \quad \frac{13.1}{11} \quad 13.1 \quad \frac{13.3}{9} \quad \frac{12.7}{20} \quad \frac{12.2}{30}$$

$$\frac{8.8}{30} \quad \frac{9.5}{20} \quad \frac{9.7}{14} \quad 10.2 \quad \frac{10.5}{13} \quad \frac{10.8}{20} \quad \frac{10.7}{30}$$

$$\frac{4.8}{30} \quad \frac{5.6}{6} \quad \frac{7.8}{4} \quad 8.2 \quad \frac{8.1}{10} \quad \frac{6.6}{13} \quad \frac{6.7}{23} \quad \frac{7.0}{30}$$

$$\frac{2.2}{30} \quad \frac{2.7}{7} \quad \frac{6.4}{4} \quad 7.1 \quad \frac{7.2}{9} \quad \frac{3.4}{14} \quad \frac{3.3}{28}$$

$$\frac{2.3}{30} \quad \frac{2.0}{20} \quad \frac{1.2}{7} \quad \frac{6.2}{4} \quad 6.9 \quad \frac{6.3}{9} \quad \frac{1.2}{14} \quad \frac{1.2}{23}$$

$$\frac{3.0}{30} \quad \frac{2.6}{23} \quad \frac{2.3}{8} \quad \frac{6.4}{5} \quad 7.1 \quad \frac{6.8}{9} \quad \frac{7.5}{23}$$

$$\frac{7.2}{30} \quad \frac{7.3}{7} \quad 7.8 \quad \frac{8.1}{9} \quad \frac{8.7}{11} \quad \frac{9.2}{30}$$

$$\frac{2.9}{30} \quad \frac{7.0}{20} \quad \frac{6.0}{12} \quad \frac{2.4}{6} \quad 2.2 \quad \frac{2.0}{10} \quad \frac{2.5}{20} \quad \frac{2.9}{30}$$

$$\frac{10.6}{30} \quad \frac{9.5}{14} \quad \frac{4.4}{5} \quad 3.9 \quad \frac{3.8}{10} \quad \frac{6.5}{19} \quad \frac{6.2}{30}$$

Level $\frac{14.5}{30} \quad \frac{14.6}{18} \quad \frac{8.3}{6} \quad 8.4 \quad \frac{8.6}{7} \quad \frac{12.8}{17} \quad \frac{13.0}{30}$

Level $\frac{14.1}{30} \quad \frac{13.7}{14} \quad \frac{11.0}{7} \quad 10.8 \quad \frac{10.9}{8} \quad \frac{12.7}{16} \quad \frac{14.1}{30}$ Level

$$\frac{8.0}{30} \quad \frac{8.0}{10} \quad 7.8 \quad \frac{7.5}{9} \quad \frac{8.8}{13} \quad \frac{10.1}{30}$$

201.90 ✓

3 + 50

T.P. 13.50 214.63 ✓ 0.77 201.13 ✓ 00.6

4 + 00

07.7

T.P.

13.40 226.09 ✓ 1.94 212.69 ✓

4 + 50

15.3

5 + 00

22.1

TP

8.28 233.82 ✓ 0.55 225.54 ✓

5 + 50

26.8

6 + 00

29.4

6 + 50

30.8

TP

11.81 244.79 ✓ 0.84 232.98 ✓

7 + 00

33.8

7 + 50

36.7

$$\frac{1.3}{30} \quad \frac{2.1}{11} \quad \frac{4.1}{10} \quad 1.3 \quad \frac{1.5}{9} \quad \frac{1.9}{25} \quad \frac{1.9}{30}$$

$$\frac{5.4}{30} - \frac{6.1}{11} \quad \frac{7.0}{9} \quad 6.9 \quad \frac{7.2}{10} \quad \frac{9.0}{30}$$

$$\frac{10.3}{30} \quad \frac{10.5}{17} \quad \frac{10.9}{15} \quad 10.8 \quad \frac{11.0}{15} \quad \frac{10.3}{18} \quad \frac{11.0}{30}$$

$$\frac{4.4}{30} \quad \frac{3.0}{13} \quad \frac{3.6}{12} \quad 3.8 \quad \frac{3.5}{10} \quad \frac{1.3}{14} \quad \frac{1.0}{30}$$

$$\frac{7.9}{30} \quad \frac{6.8}{11} \quad 7.0 \quad \frac{7.0}{9} \quad \frac{5.1}{14} \quad \frac{5.8}{30}$$

$$\frac{5.5}{30} \quad \frac{5.2}{10} \quad \frac{4.4}{10} \quad \frac{5.0}{9} \quad \frac{5.9}{30}$$

$$\frac{3.2}{30} \quad \frac{3.0}{12} \quad \frac{3.8}{11} \quad \frac{3.0}{7} \quad \frac{3.0}{10} \quad \frac{3.8}{10} \quad \frac{3.5}{11} \quad \frac{4.4}{30}$$

$$\frac{9.7}{30} \quad \frac{10.3}{11} \quad \frac{11.4}{10} \quad \frac{11.0}{9} \quad 11.0 \quad \frac{11.8}{9} \quad \frac{11.4}{10} \quad \frac{12.0}{30}$$

$$\frac{6.0}{30} \quad \frac{6.7}{11} \quad \frac{8.0}{10} \quad \frac{8.1}{10} \quad \frac{8.5}{6} \quad \frac{9.4}{10} \quad \frac{10.3}{30}$$

+ 244.79 -

8+00

38.8

+50

42.5

+68

44.0

+73.5

43.9

+79

44.4

+ R Lexington

44.5

Check Levels -

0.82

11.81

13.39

$$\frac{4.9}{30} \quad \frac{4.9}{11} \quad \frac{6.0}{10} \quad 6.0 \quad \frac{6.4}{5} \quad \frac{7.5}{9} \quad \frac{8.3}{30}$$

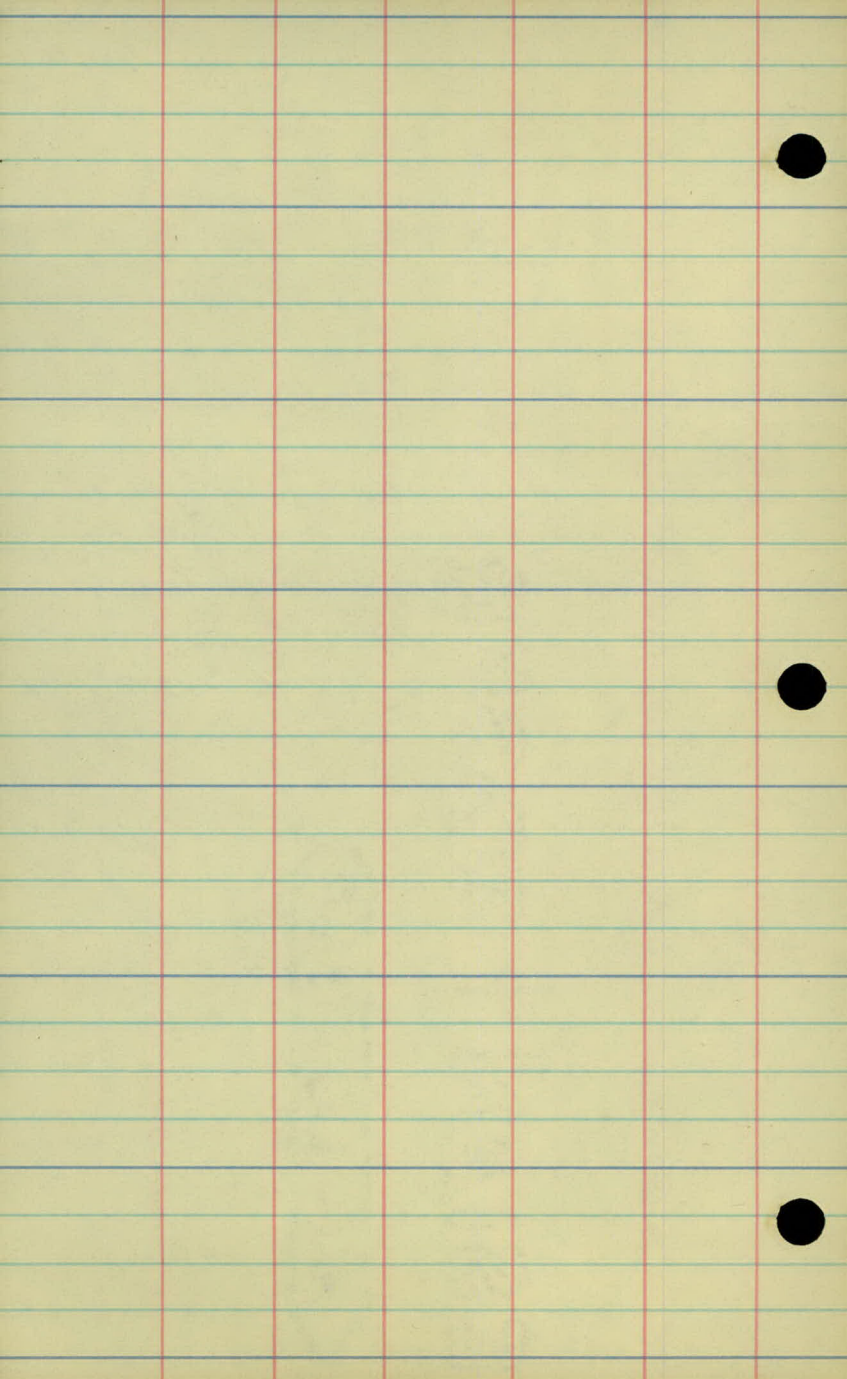
$$\frac{1.6}{30} \quad \frac{1.2}{12} \quad \frac{2.0}{9} \quad 2.3 \quad \frac{2.3}{6} \quad \frac{3.3}{30}$$

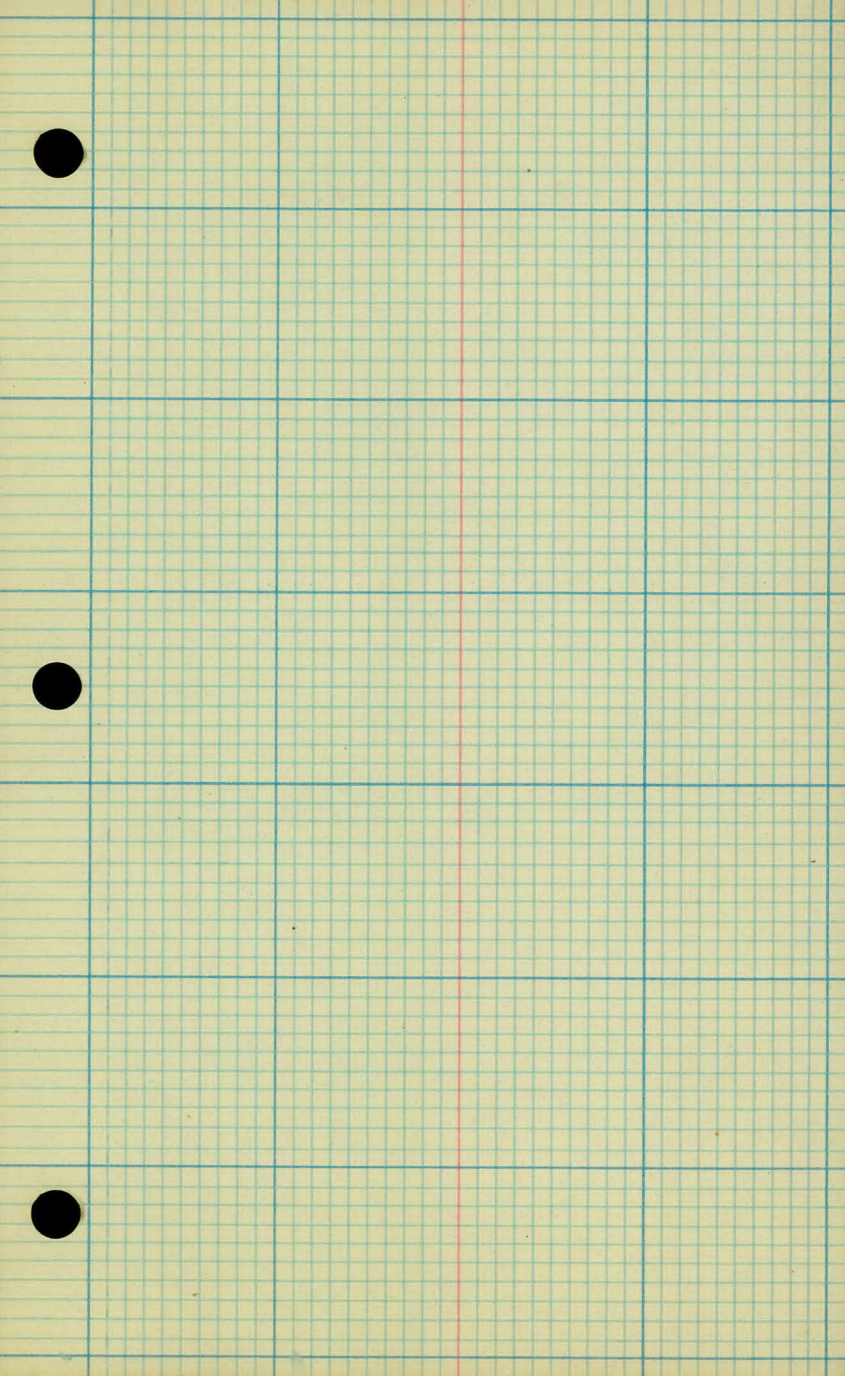
$$\frac{0.4}{30} \quad \frac{0.6}{13} \quad 0.8 \quad \frac{0.2}{12} \quad \frac{1.7}{30}$$

$$\frac{3.0}{30} \quad \frac{2.7}{13} \quad 0.9 \quad \frac{2.1}{12} \quad \frac{3.4}{30}$$

$$\frac{0.3}{30} \quad 0.4 \quad \frac{1.2}{30}$$

$$\frac{0.1}{30} \quad 0.3 \quad \frac{0.8}{30}$$





6+00

Edgewater Road

5+00

4+00

3+00

2+00

1+00

0+00

+82 & 18' Drive

For
G.M.
C.S.
W.H.

PP+46 19.0

PP+47 18.0

+31 & 16' Drive

+83 & 18' Drive

CM+33 14' L 14' R 18" S

CM New

P.P.+08 10.0

1 sty
Frame
48.0

+75 23.0

+45 30.0

5" Birch +10 14.0

PP.0-11 10.8

9+00

8+00

C.M. + 73.5 11'2 11'R 12"

Good

BM
T

