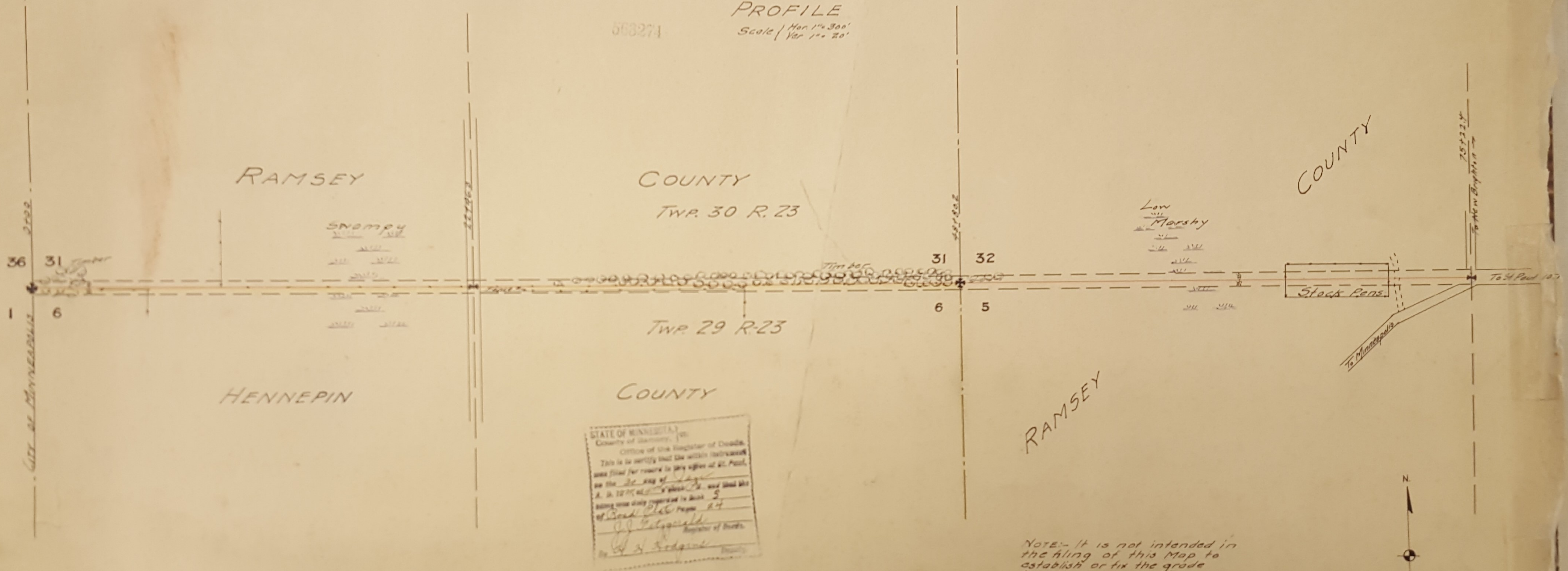


PROFILE
 Scale / Hor 1" = 300'
 Ver 1" = 20'

568271



STATE OF MINNESOTA
 County of Ramsey
 Office of the Registrar of Deeds
 This is to certify that the within instrument
 was filed for record in my office at St. Paul,
 on the 20 day of June
 A. D. 1910, at 10 o'clock A. M. and that the
 same was duly registered to Book 5
 of Book 216 Page 24
 J. J. Fitzgerald
 Registrar of Deeds

NOTE:- It is not intended in
the filing of this Map to
establish or fix the grade
line shown on profile

Map Showing
 PROPOSED JUDICIAL HIGHWAY
 Between
 HENNEPIN AND RAMSEY COUNTIES
 Location as Shown by Plat
 E. E. Furell
 County Surveyor Hennepin