

COUNTY ROAD "J" or CO. RD. #63-B

Plat of a Judicial Road between

Ramsey and Anoka Counties

1894

Commissioners

A. Dayton, Condit, A. A. Rene and

James Drea.

Surveyor: Charles A. Forbes,
St. Paul, Minn.

STATE OF MINNESOTA)
COUNTY OF RAMSEY) SS

Office of Register of Deeds

This is to certify that the within instrument was filed for record in this office at St. Paul on the 10th day of April A.D. 1895 at 3:20 o'clock P.M. and that the same was duly recorded in Book 25 of Str. Opening, Page 31.

Henry Weber
Register of Deeds
T. L. Breen,
Deputy

Road Plat Book #3

Project File #482

Page 21

W. P. A. PROJECT O. P. 65-1-71-2668

COUNTY ROAD "J" or CO. RD. #63-B

To the Honorable Judicial Commission:

Being appointed and duly authorized by your honorable body to make a survey of the Judicial Road between the Counties of Ramsey and Anoka, Minnesota, I herewith tender you the within plat and following field notes with description: Commencing at the intersection of the White Bear Roads (so-called) and the County line between Section 2, Town 30, Range 22 and Section 36, Town 31, Range 22, 200 feet East of the Northeast Corner of Section 3, Town and Range aforesaid, thence West on the said County line 2997.74 feet to the East shore of Otter Lake and point of ending and I hereby certify that the Road is correctly located.

Charles A. Forbes,
Surveyor

Road Plat Book #3,

Page 21

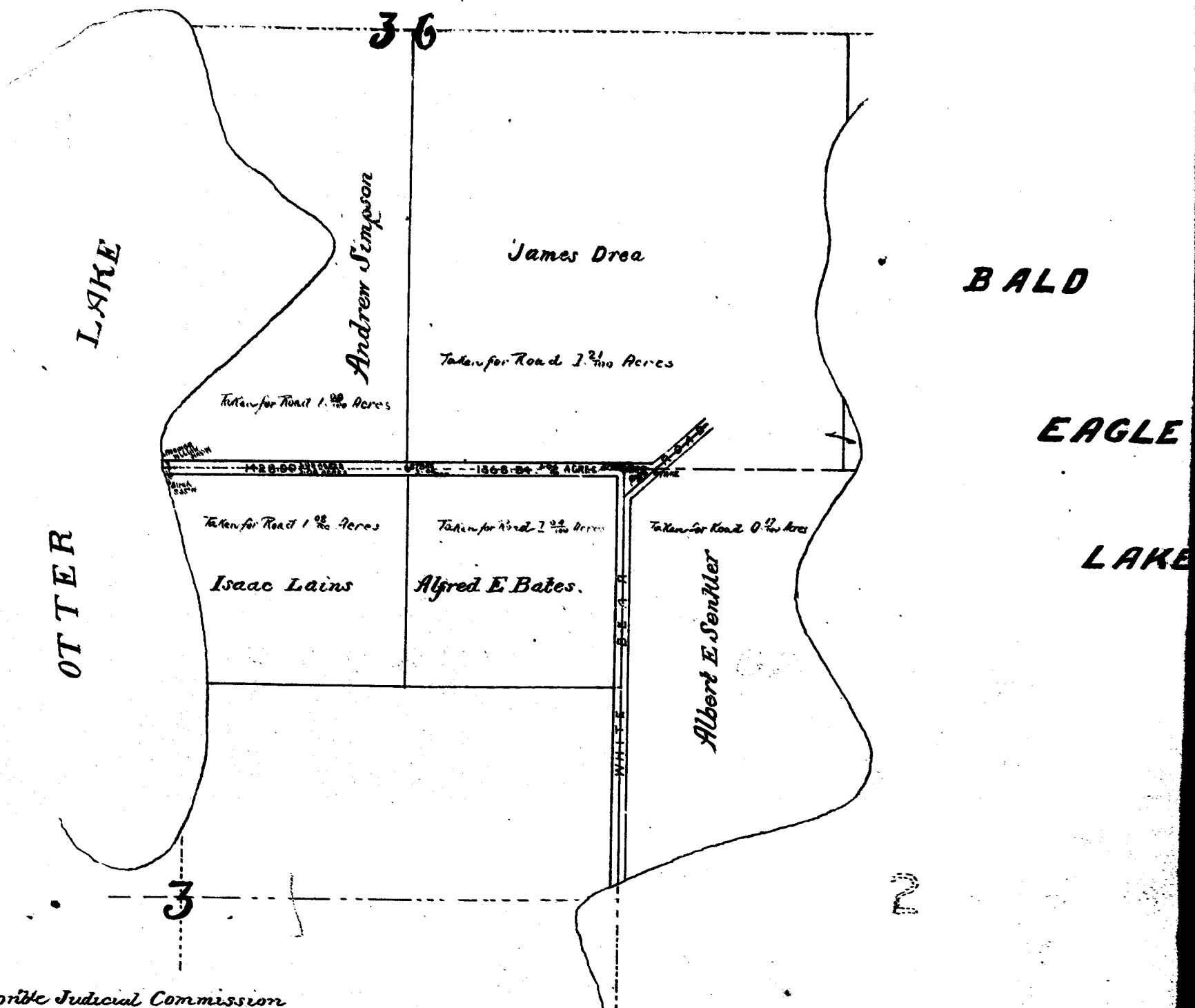
Project File #482

W. P. A. PROJECT O. P. 65-1-71-2668

Henry Nelson
W. H. Brown

Plat of
A JUDICIAL ROAD
 BETWEEN RAMSEY AND ANOKA COUNTIES
 1894

Commissioners
 A. DAYTON CONDIT, A. A. RENE, and
 JAMES DREA,
 Surveyor
 Charles A. Forbes.
 ST. PAUL, MINN.



To the Honorable Judicial Commission
 Being appointed and duly authorized by your honorable body to make survey of the Judicial Road between the Counties of Ramsey and Anoka, Minnesota. I herewith tender you the within plat and following field notes with description of the intersection of the White Bear Road (so-called), and the County line, between Section 2 Town 30 Range 22 and Section 3 Town 30 Range 22.

A JUDICIAL ROAD
BETWEEN RAMSEY AND ANOKA COUNTIES

1894

Commissioners

A. DAYTON, CONDIT, A. A. RENE, and

JAMES DREA.

Surveyor

Charles A. Forbes.

ST. PAUL, MINN.

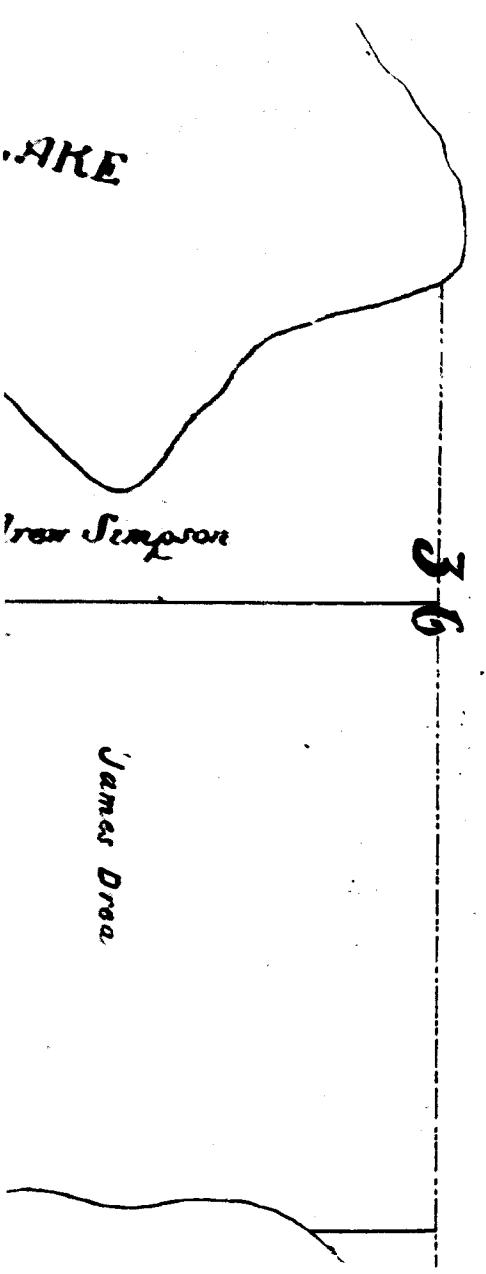
Map of

This is to certify that the within map was prepared by me in my office on the 15th day of August, A. D. 1894, at St. Paul, Minn., and that the same was duly recorded in book 11 of the County Recorder's Office of Ramsey County, Minnesota.

Surveyor Weber

St. Paul, Minn.

36

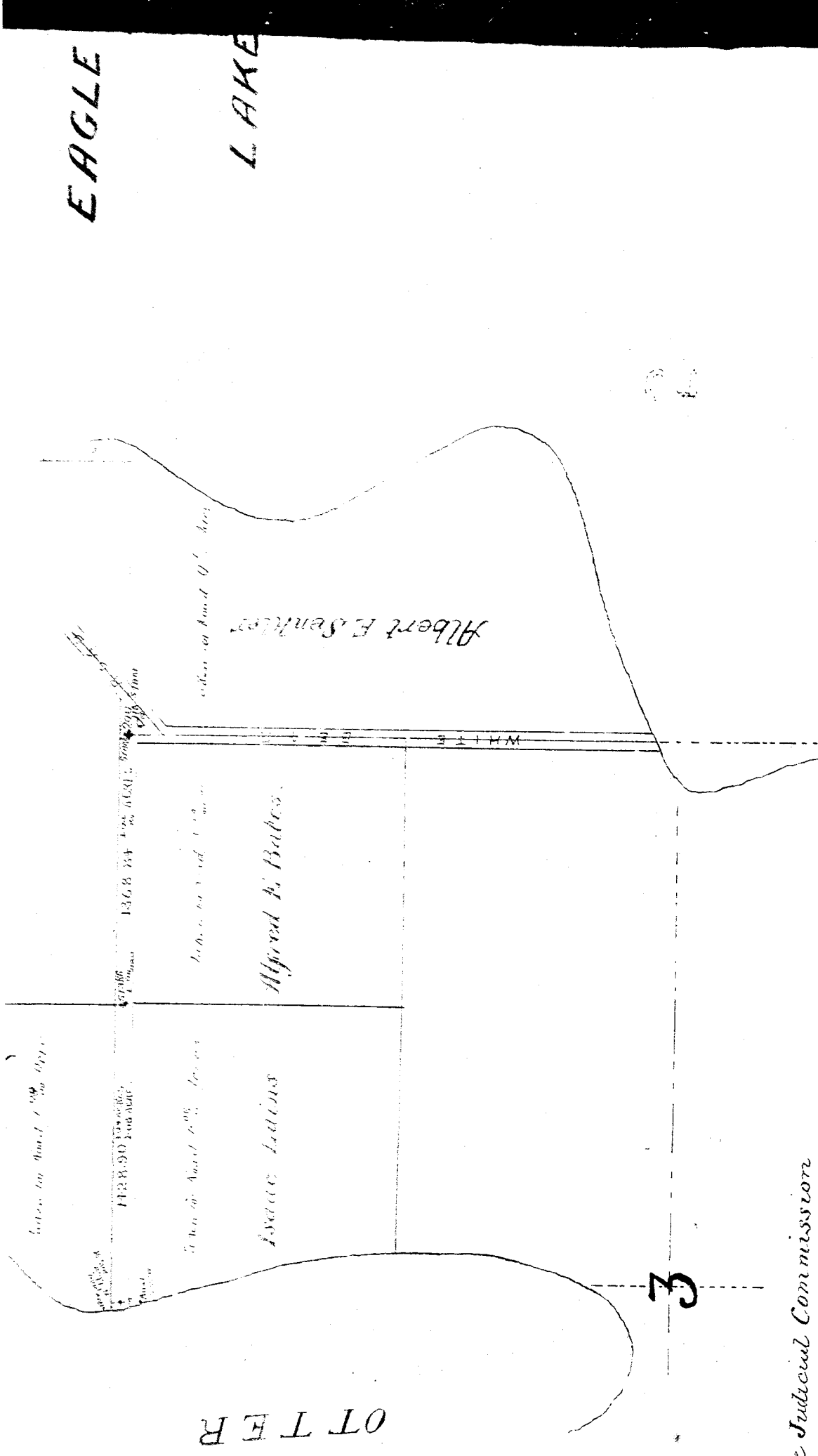


LAKE

near Simpson

James Drea

BALD



To the Honorable Judicial Commission

Being appointed and duly authorized by your honorable body to make survey of the Judicial Road between the Counties of Ramsey and Anoka, Minnesota, I herewith tender you the within plat and following field notes with description commencing at the intersection of the White Bear Road (so-called), and the County line, between Section 2 Town 30 Range 22 and Section 36 Town 31 Range 22, 200 feet East of the North East Corner of Section 3 Town and Range aforesaid, Thence WEST on the said County line

BK 3 PG 21

A JUDICIAL ROAD

BETWEEN RAMSEY AND ANOKA COUNTIES

1894

Commissioners

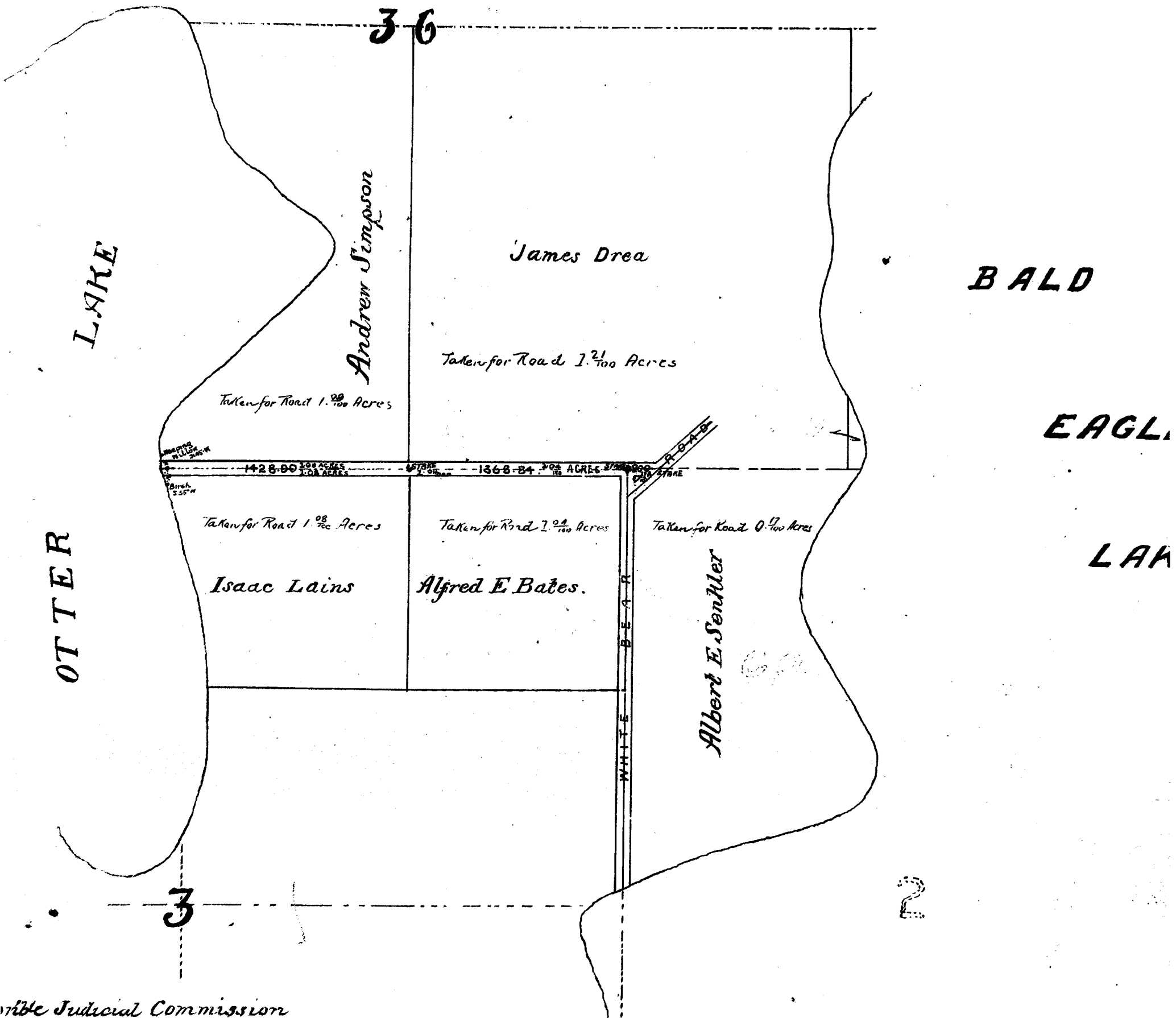
A. DAYTON CONDIT, A. A. RENE, and

JAMES DREA.

Surveyor

Charles A. Forbes.

ST PAUL MINN



able Judicial Commission

Being appointed and duly authorized by your honorable body to make survey of the Judicial Commission of the Counties of Ramsey and Anoka, Minnesota, I herewith tender you the within plat and following field Notes, with description of the intersection of the White Bear Road (so called), and the County line, between Section 3 Town 30 Range 22 and Section 3 Town 30 Range 22.