

OFFICE OF COUNTY ENGINEER

RAMSEY COUNTY

CONSTRUCTION PLAN FOR GRADING AND SURFACING

FIFTH ST. N.W. S.A.P. 62-673-02 C.S.A.H. 73

BETWEEN: FIFTH AVE. N.W.

AND: SECOND AVE. N.W.

FROM: 1300 FT. EAST OF CENTER OF SEC. 29, T30N, R23W.

TO: 2300 FT. EAST OF CENTER OF SEC. 29, T30N, R25W.

GROSS LENGTH 1010.0 FEET 0.913 MILES
 BRIDGES-LENGTH 0 FEET 0 MILES
 EXCEPTIONS-LENGTH 0 FEET 0 MILES
 NET LENGTH 1010.0 FEET 0.913 MILES

SHEET NO.	INDEX DESCRIPTION
1	TITLE SHEET
2	TYPICAL SECTIONS, & ESTIMATED QUANTITIES
3	PLAN & PROFILE, DRAINAGE STRUCTURES & DETAIL PLATES
4-5	CROSS SECTION SHEETS

SCALES
 PLAN, 1 inch = 100 Feet
 PROFILE, Horiz. 1 inch = 100 Feet Vert. 1 inch = 10 Feet
 WORKING PLANS - Horiz. 1 inch = 100 Feet Vert. 1 inch = 10 Feet
 LAYOUT, 1 inch = Feet

CONVENTIONAL SIGNS

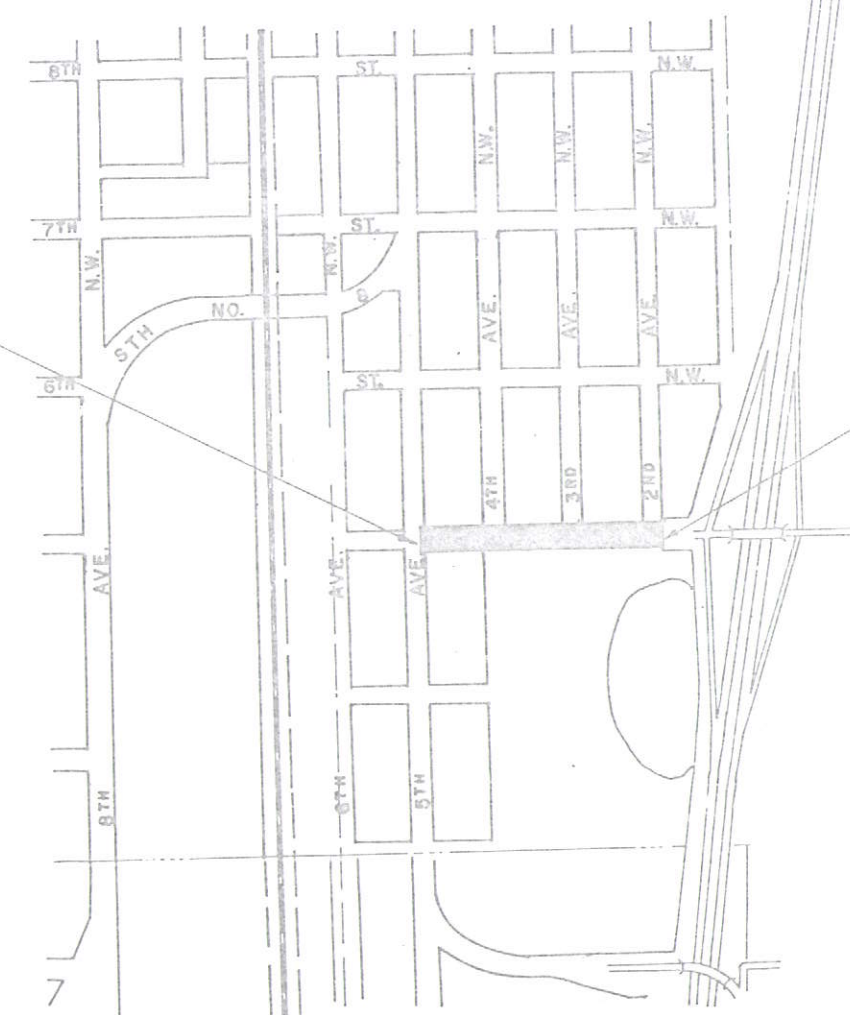
LINE	TIMBER
ADJ. OR GAUGE LINE	BRUSH
CONCRETE	CRACK
PAV. LINE	ROCK LEDGE
GRAVEL	SAND
EDGE OF CUT	TOE OF EMBANKMENT
CATCH BASIN	MANHOLE
DROP INLET	FIRE HYDRANT
ARC LAMP	STEEL LAMP (2000 LUM)
RAILROAD CROSSING SIGN	RAILROAD CROSSING BELL
ELECTRIC WARNING SIGN	CROSSING BELL
CATTLE GUARD	OVERHEAD (Highway Over)
UNDERPASS (Highway Under)	ABUTMENT, WALL & PIER
RAILROAD	CONCRETE
BUILDING (One Story Frame)	CONCRETE 8" STONE T-PILE 8" BRICK 8" STUCCO
IRON PIPE	STONE MONUMENT
WOOD STAKE OR M.S.	MEANDER CORNER



PIT DATA

NO. 1	Located in Dead End
NO. 2	Located in Dead End
NO. 3	Located in Dead End
NO. 4	Located in Dead End

BEGIN PROJECT STA. 0+00



END PROJECT STA. 10+10

DESIGN SPEED: 35 M.P.H.
 DESIGN LOAD: 9 TON ULTIMATE
 TRAFFIC COUNT-NONE AVAILABLE

I HEREBY CERTIFY THAT THIS PLAN WAS PREPARED BY ME OR UNDER MY DIRECT SUPERVISION AND THAT I AM A DULY REGISTERED PROFESSIONAL ENGINEER UNDER THE LAWS OF THE STATE OF MINNESOTA.
 [Signature] REG. NO. 2002 DATE 6-11-2002
 COUNTY ENGINEER

RECOMMENDED FOR APPROVAL [Signature] COUNTY ENGINEER DATE 6-27-2002
 APPROVED [Signature] CHAIRMAN OF RAMSEY COUNTY BOARD
 MINNESOTA STATE HIGHWAY DEPARTMENT

RECOMMENDED FOR APPROVAL [Signature] DATE 7-1-2002
 RECOMMENDED FOR APPROVAL [Signature] DATE 6-28-2002
 APPROVED [Signature] DATE 7-1-2002

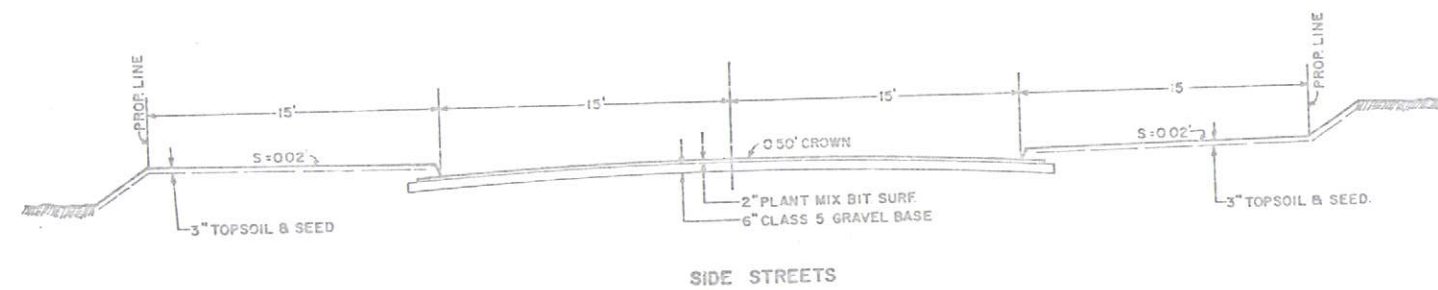
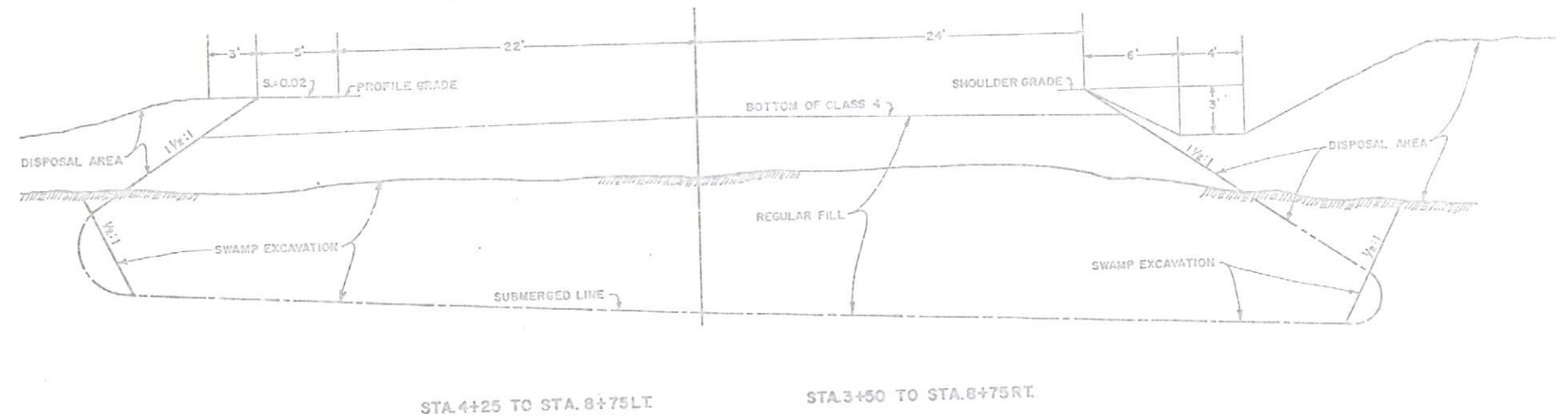
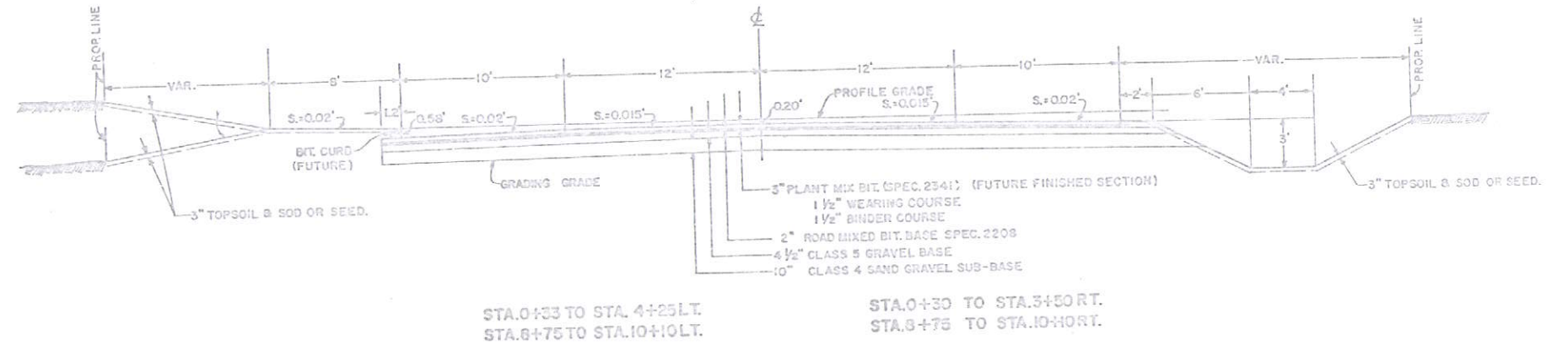
NOTE: THESE PLANS WERE PREPARED BY REVISING PLANS SUBMITTED TO THIS OFFICE BY THE NEW BRIGHTON VILLAGE ENGINEER. NO ORIGINAL SURVEY WAS MADE BY THIS OFFICE.

---SPECIFICATIONS---
 THE "SPECIFICATIONS FOR HIGHWAY CONSTRUCTION" DATED JAN. 1, 1964 SHALL GOVERN.

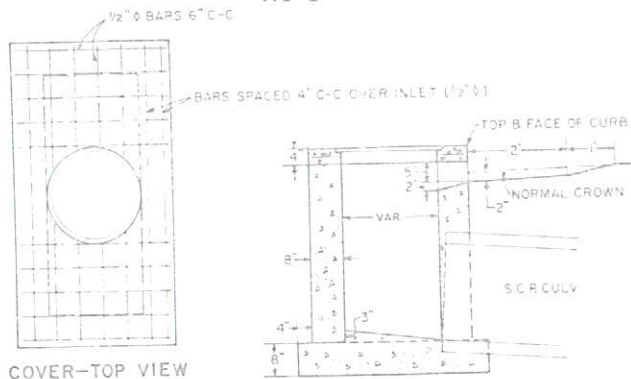
MICRO-FILMED

ESTIMATED QUANTITIES		UNIT	TOTAL ESTIMATED QUANTITIES
2101502	CLEARING	TREE	15
2101507	GRUBBING	TREE	13
2101511	REMOVE CATCH BASIN	STRUCTURE	3
2101518	REMOVE PIPE SEWER	LINEAR FOOT	185
2101501	CLASS A EXCAVATION	CUBIC YARD	3500
2101505	EDGEOFF EXCAVATION (CLASS A)	CUBIC YARD	27000
2101510	TOPSOIL COVERING	CUBIC YARD	720
2101506	3/4 YARD DRAGLINE	HOURS	495
2101505	GRAVEL SUB-BASE IN PLACE (CLASS 4)	TON	2700
2101505	GRAVEL BASE IN PLACE (CLASS 5)	TON	2000
2201401	BITUMINOUS MATERIAL FOR PRIME COAT	GALLON	1550
2201401	BITUMINOUS MATERIAL FOR MIXTURE	GALLON	5800
2211505	AGGREGATE	TON	620
2251401	BITUMINOUS MATERIAL FOR SEAL COAT	GALLON	720
2251401	SEAL COAT AGGREGATE	TON	45
2201522	R.C. 12" SPAN R.C.B.-A, CLASS V	LINEAR FOOT	70
2201522	R.C. 12" SPAN R.C.B.-A, CLASS II	LINEAR FOOT	176
2201522	R.C. 12" SPAN R.C.B.-A, CLASS III	LINEAR FOOT	120
2201522	R.C. 12" SPAN R.C.B.-A, CLASS IV	LINEAR FOOT	60
2201522	R.C. 12" SPAN R.C.B.-A, CLASS V	LINEAR FOOT	150
2201522	CONSTRUCT CATCH BASINS, DESIGN C	LINEAR FOOT	84
2201522	CONSTRUCT CATCH BASINS, DESIGN R.C. 3	ASSEMBLY	6
2201522	R.C. 12" CASTLE ASSEMBLIES	ASSEMBLY	2
2201522	ADJUST FRAME & RING CASTING		
2201501	ROADSIDE SEEDING	ACRE	1
2201501	SODDING	SQUARE YARD	1400

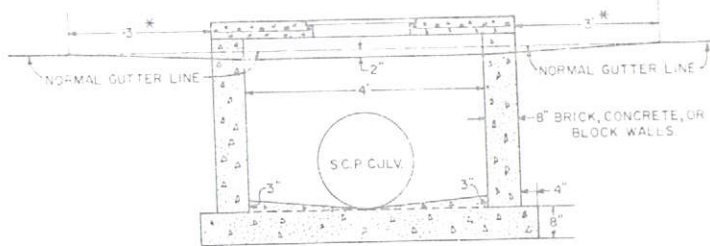
TYPICAL SECTIONS



SPECIAL CATCH BASIN RC-3



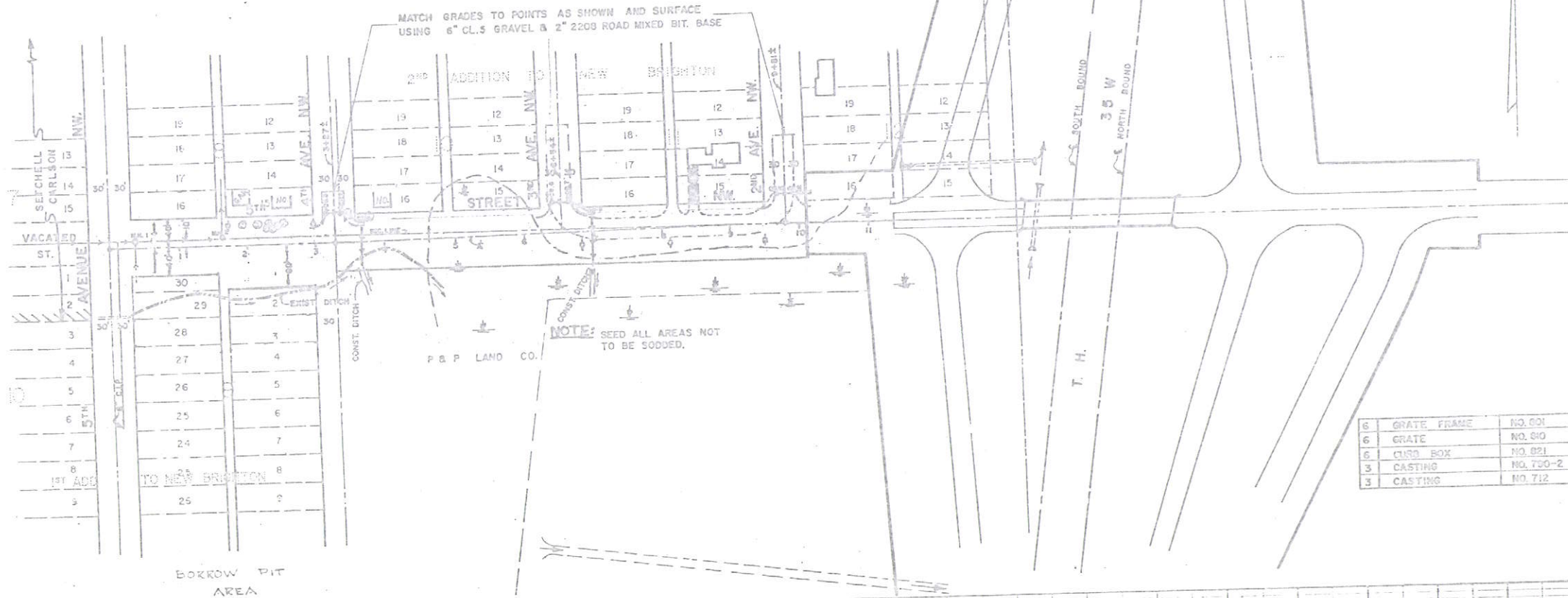
COVER-TOP VIEW
RING & COVER ASSEMBLY
M.H.D. ST. PLATE 41088 - CASTING NO. 730-2
M.H.D. ST. PLATE 41111 - CASTING NO. 72



FRONT VIEW

* CONSTRUCT 3 LIN. FT. CONCRETE CURB ON EACH SIDE OF CATCH BASINS.
CHANGE 3\"/>

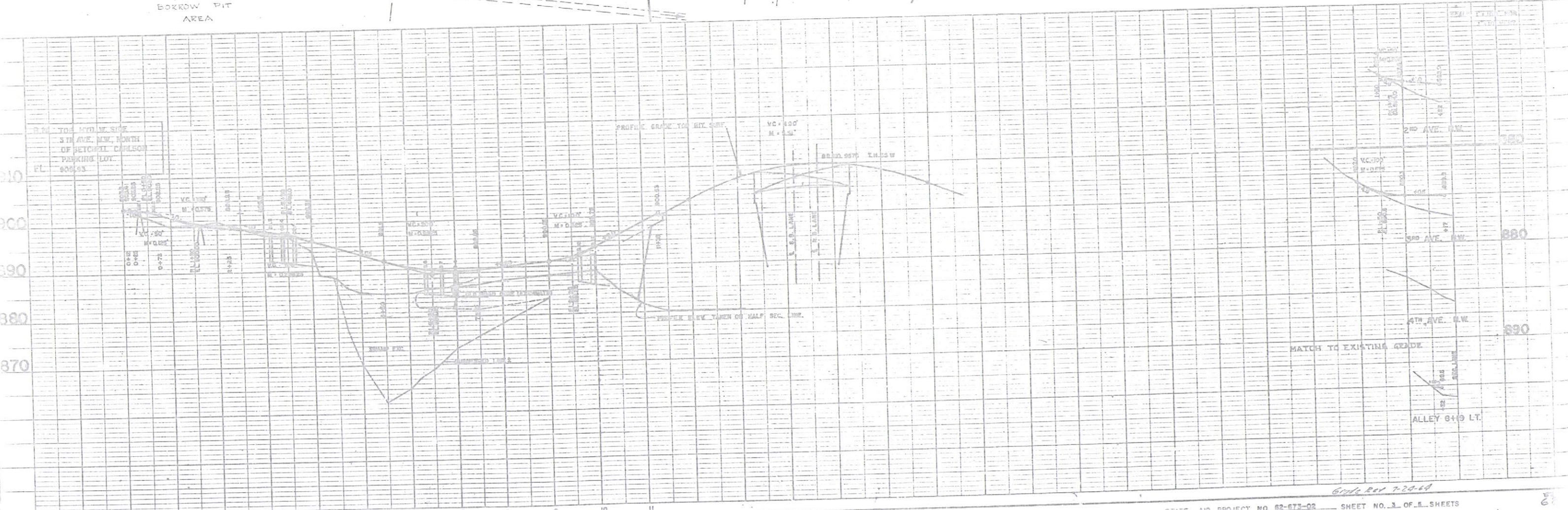
STA 0+00 F.B.I. T.O.L.E. R.C.P.-A CULV. CLASS A
 S=22' R=13
 INV. LT.=892.3 + 40'
 INV. RT.=897.9 + 30'



STATION		LOCATION		STRUCTURE		ELEVATION		ADJUST. CASTING ASSEMBLY		F.B.I. PIPE		
NO.	TYPE	DESIGN	CONST. HEIGHT LRI. FT.	F.B.I. CASTING ASSEMBLY	GRATE OR RING	OUTLET	16\"/>					
0+39 ±	LT. 10'	1	M.H.									
1+65 ±	LT. 12'	2	M.H.									
3+42 ±	LT. 42'	3	C.B.	C	5.4	898.3	892.1				28'	
3+42 ±	LT. 42'	4	C.B.	C	5.7	898.3	891.8				28'	
3+65 ±	LT. 23'	5	C.B.	RC-3	3.5	897.0	891.5				60' - EL. 891.0	
6+38 ±	LT. 42'	6	C.B.	C	3.9	899.0	894.9				38'	
6+69 ±	LT. 42'	7	C.B.	C	4.2	899.0	894.6				36'	
7+00 ±	LT. 23'	8	C.B.	RC-3	4.8	899.6	894.3				28' - EL. 894.0	
9+56 ±	LT. 42'	10	C.B.	C	4.9	892.3	896.5				28'	
9+96 ±	LT. 42'	11	C.B.	C	4.4	892.3	896.0				28'	

STANDARD DETAIL PLATES	
4002 C	MANHOLE OR CATCH BASIN
4125 C	CATCH BASIN FRAME CASTING
4149 B	GRATE CASTING FOR CATCH BASIN
4161 C	CURB BOX CASTING FOR CATCH BASIN
4108 B	AUXILIARY CASTING FOR MANHOLE RING EXTENSION
4111 C	COVER CASTING FOR MANHOLE
3000B	REINFORCED CONCRETE PIPE
3014A	REINFORCED CONCRETE PIPE-ARCH

6	GRATE FRAME	NO. 601
6	GRATE	NO. 610
6	CURB BOX	NO. 621
3	CASTING	NO. 750-2
3	CASTING	NO. 712

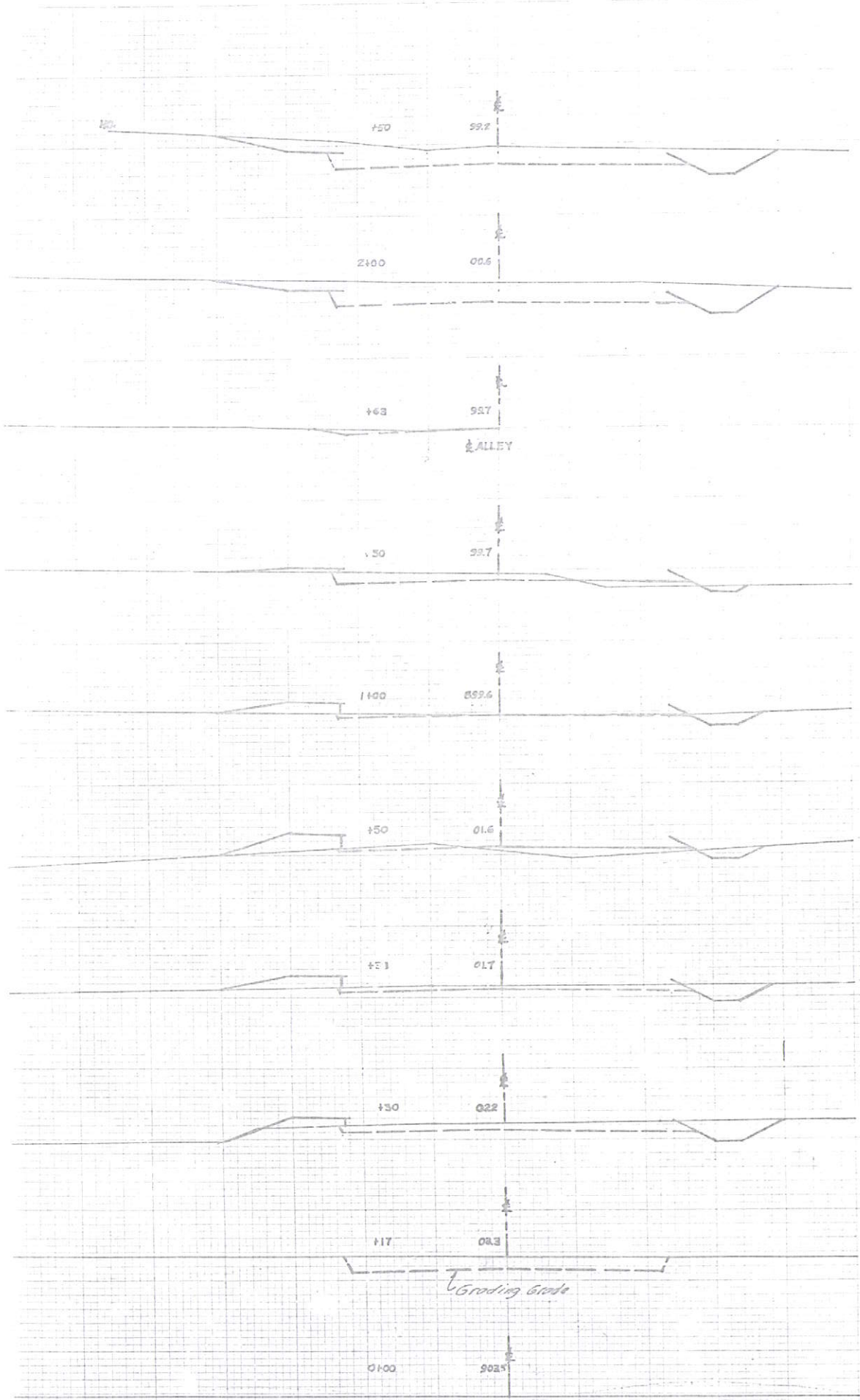


STATION-ELEVATION
E

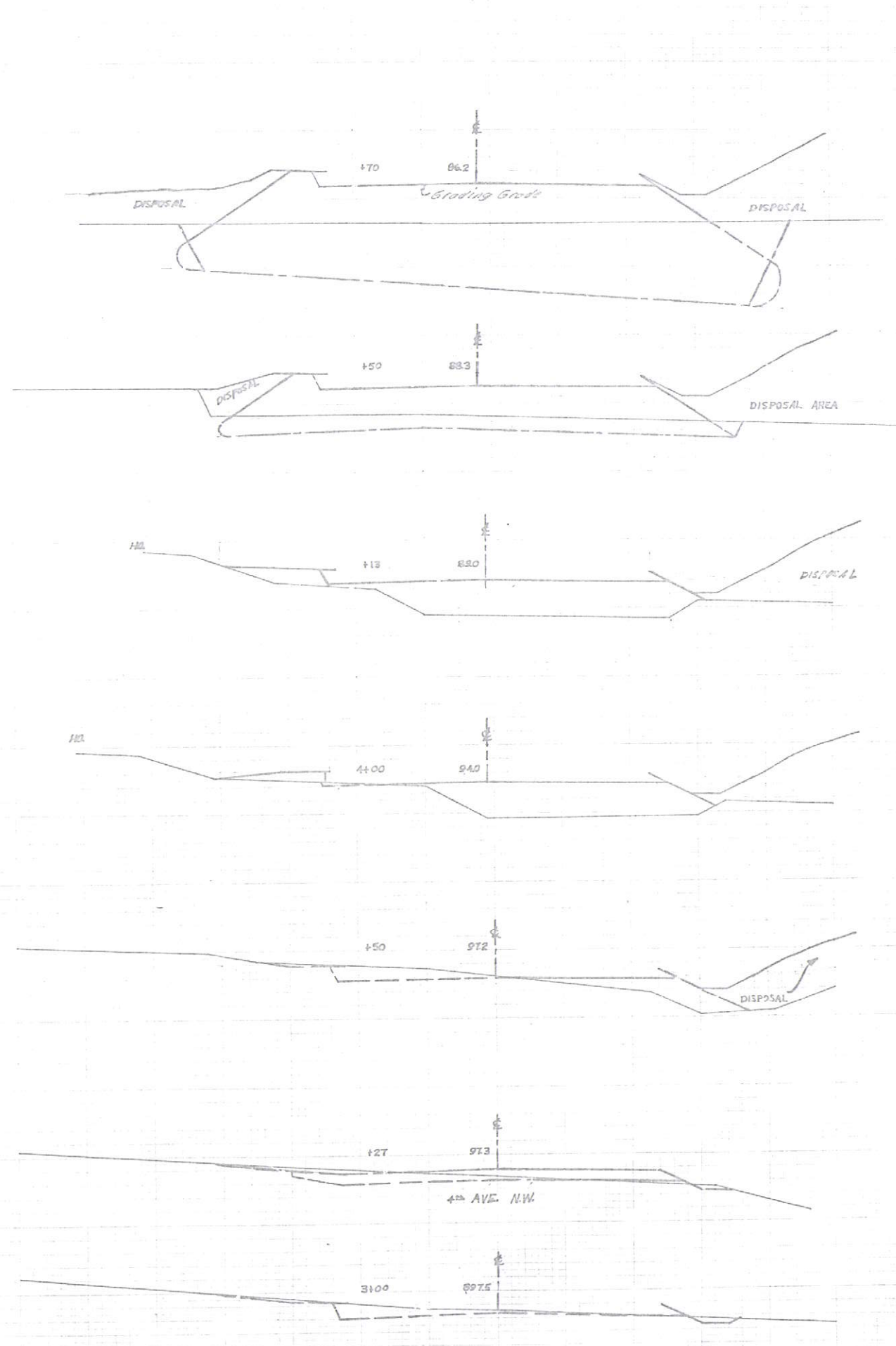
EXCAVATION | EMBANKMENT
SUB TOTALS CU. YDS. CU. YDS. SUB TOTALS

STATION-ELEVATION
E

EXCAVATION | EMBANKMENT
SUB TOTALS CU. YDS. CU. YDS. SUB TOTALS



369	0
145	0
13	5
62	26
39	104
17	26
23	6
48	4
32	0



0	620
0	506
1	111
45	248
46	48
52	27
219	0

Note: Do not abstract existing ditches or drains.

STATION-ELEVATION
E

EXCAVATION | EMBANKMENT
SUB TOTALS CU YDS. CU YDS. SUB TOTALS

STATION-ELEVATION
E

EXCAVATION | EMBANKMENT
SUB TOTALS CU YDS. CU YDS. SUB TOTALS

3,495 23,437

