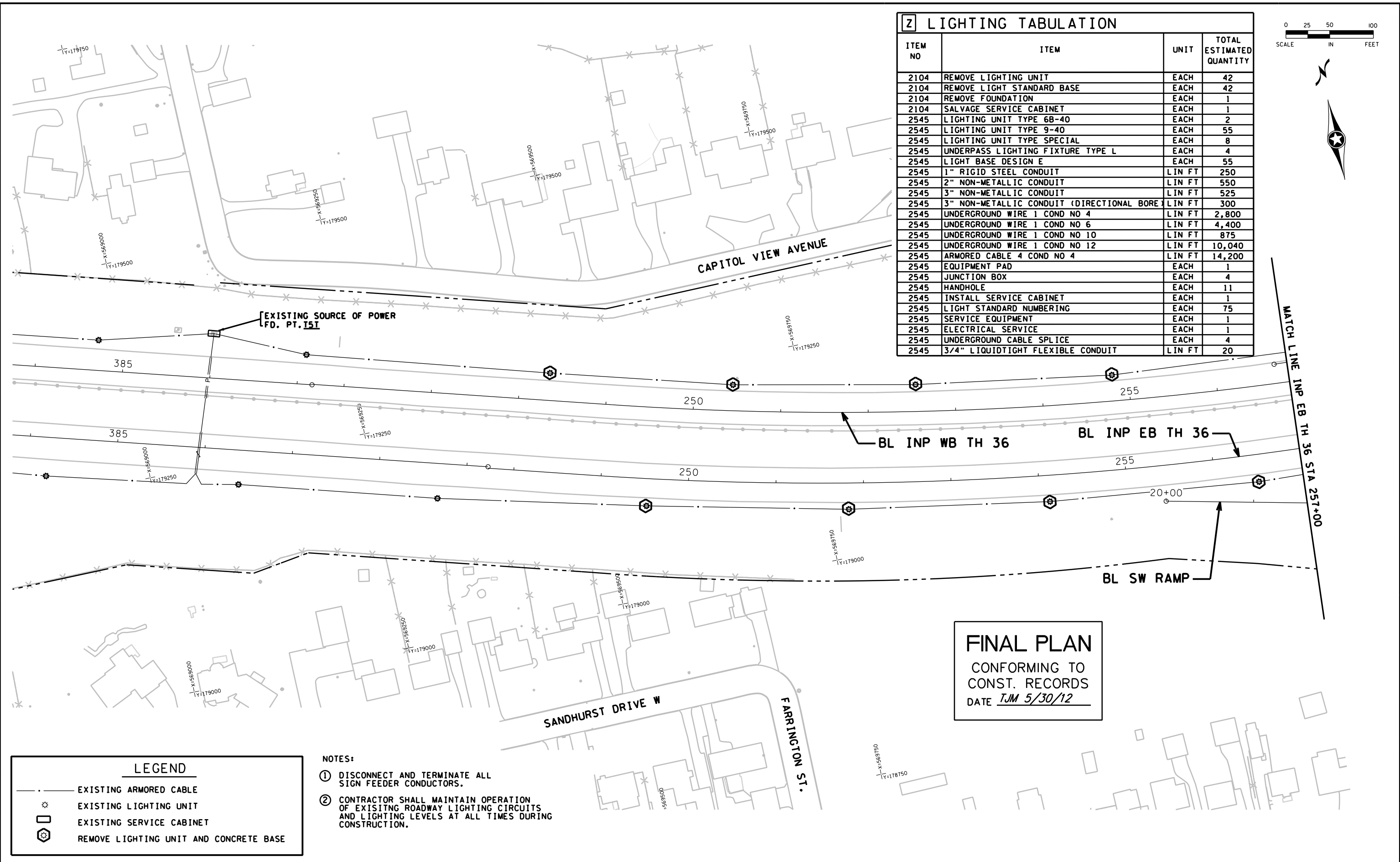


6:08:00 PM

6/7/2012

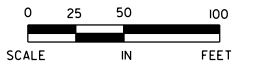
mtron

S:\PT\RM\rmssp\108790\lighting\2011_08\blth\tr_omsp\108790_lt_rm.dgn



2 LIGHTING TABULATION

ITEM NO	ITEM	UNIT	TOTAL ESTIMATED QUANTITY
2104	REMOVE LIGHTING UNIT	EACH	42
2104	REMOVE LIGHT STANDARD BASE	EACH	42
2104	REMOVE FOUNDATION	EACH	1
2104	SALVAGE SERVICE CABINET	EACH	1
2545	LIGHTING UNIT TYPE 6B-40	EACH	2
2545	LIGHTING UNIT TYPE 9-40	EACH	55
2545	LIGHTING UNIT TYPE SPECIAL	EACH	8
2545	UNDERPASS LIGHTING FIXTURE TYPE L	EACH	4
2545	LIGHT BASE DESIGN E	EACH	55
2545	1" RIGID STEEL CONDUIT	LIN FT	250
2545	2" NON-METALLIC CONDUIT	LIN FT	550
2545	3" NON-METALLIC CONDUIT	LIN FT	525
2545	3" NON-METALLIC CONDUIT (DIRECTIONAL BORE)	LIN FT	300
2545	UNDERGROUND WIRE 1 COND NO 4	LIN FT	2,800
2545	UNDERGROUND WIRE 1 COND NO 6	LIN FT	4,400
2545	UNDERGROUND WIRE 1 COND NO 10	LIN FT	875
2545	UNDERGROUND WIRE 1 COND NO 12	LIN FT	10,040
2545	ARMORED CABLE 4 COND NO 4	LIN FT	14,200
2545	EQUIPMENT PAD	EACH	1
2545	JUNCTION BOX	EACH	4
2545	HANDHOLE	EACH	11
2545	INSTALL SERVICE CABINET	EACH	1
2545	LIGHT STANDARD NUMBERING	EACH	75
2545	SERVICE EQUIPMENT	EACH	1
2545	ELECTRICAL SERVICE	EACH	1
2545	UNDERGROUND CABLE SPLICE	EACH	4
2545	3/4" LIQUIDTIGHT FLEXIBLE CONDUIT	LIN FT	20



EXISTING SOURCE OF POWER
FD. PT. 151

BL INP WB TH 36

BL INP EB TH 36

BL SW RAMP

MATCH LINE INP EB TH 36 STA 257+00

FINAL PLAN
CONFORMING TO
CONST. RECORDS
DATE JUN 5/30/12

LEGEND

	EXISTING ARMORED CABLE
	EXISTING LIGHTING UNIT
	EXISTING SERVICE CABINET
	REMOVE LIGHTING UNIT AND CONCRETE BASE

- NOTES:**
- DISCONNECT AND TERMINATE ALL SIGN FEEDER CONDUCTORS.
 - CONTRACTOR SHALL MAINTAIN OPERATION OF EXISTING ROADWAY LIGHTING CIRCUITS AND LIGHTING LEVELS AT ALL TIMES DURING CONSTRUCTION.

DESIGN TEAM	1	KST	6/4/12	RECORD DRAWING
DRAWN BY:	MIT			
DESIGNER:	SRH,HLF			
CHECKED BY:	KLE			
NO.	BY	DATE	REVISIONS	

I hereby certify that this plan was prepared by me or under my direct supervision and that I am a duly Licensed Professional Engineer under the laws of the State of Minnesota.
 Certified By: Lic. No. 25087
 Printed Name: BRET W. JOHNSON Date: 3/3/2010



RAMSEY COUNTY, MINNESOTA
TH 36 / RICE STREET (CSAH 49)
 SP NO. 62-649-27 CTB, 6212-165 (TH 36)

SALVAGE AND REMOVE LIGHTING PLAN
 INP EB TH 36 STA 384+00 TO 257+00

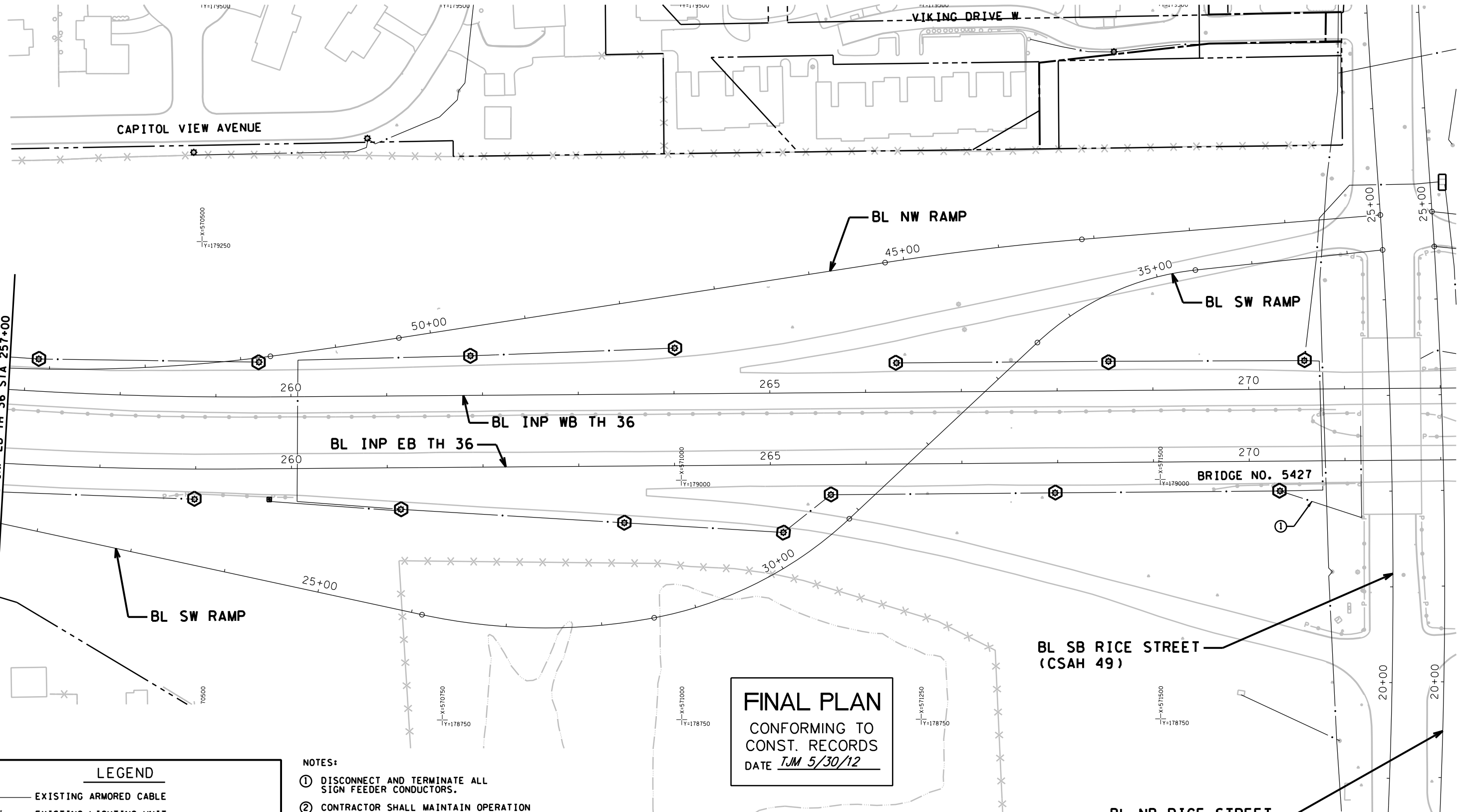
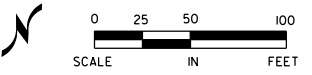
FILE NO. **333**
 RAMSP108790
 LT1 OF LTH
534

6:08:01 PM

6/7/2012

mtron

S:\PT\RY\Ramsp\108790\lighting\2011_05\bluit\ramsp108790_lit_rm.dgn



FINAL PLAN
CONFORMING TO
CONST. RECORDS
DATE TJM 5/30/12

LEGEND	
	EXISTING ARMORED CABLE
	EXISTING LIGHTING UNIT
	EXISTING SERVICE CABINET
	REMOVE LIGHTING UNIT AND CONCRETE BASE

- NOTES:**
- DISCONNECT AND TERMINATE ALL SIGN FEEDER CONDUCTORS.
 - CONTRACTOR SHALL MAINTAIN OPERATION OF EXISTING ROADWAY LIGHTING CIRCUITS AND LIGHTING LEVELS AT ALL TIMES DURING CONSTRUCTION.

DESIGN TEAM	1	KST	6/4/12	RECORD DRAWING
DRAWN BY:	MIT			
DESIGNER:	SRH,HLF			
CHECKED BY:	KLE			
NO.	BY	DATE	REVISIONS	

I hereby certify that this plan was prepared by me or under my direct supervision and that I am a duly Licensed Professional Engineer under the laws of the State of Minnesota.
 Certified By: *Bret W. Johnson* Lic. No. 25087
 Printed Name: BRETT W. JOHNSON Date: 3/3/2010



RAMSEY COUNTY, MINNESOTA
TH 36 / RICE STREET (CSAH 49)
 SP NO. 62-649-27 CTB, 6212-165 (TH 36)

SALVAGE AND REMOVAL LIGHTING PLAN
 INP EB TH 36 STA 257+00 TO 272+00

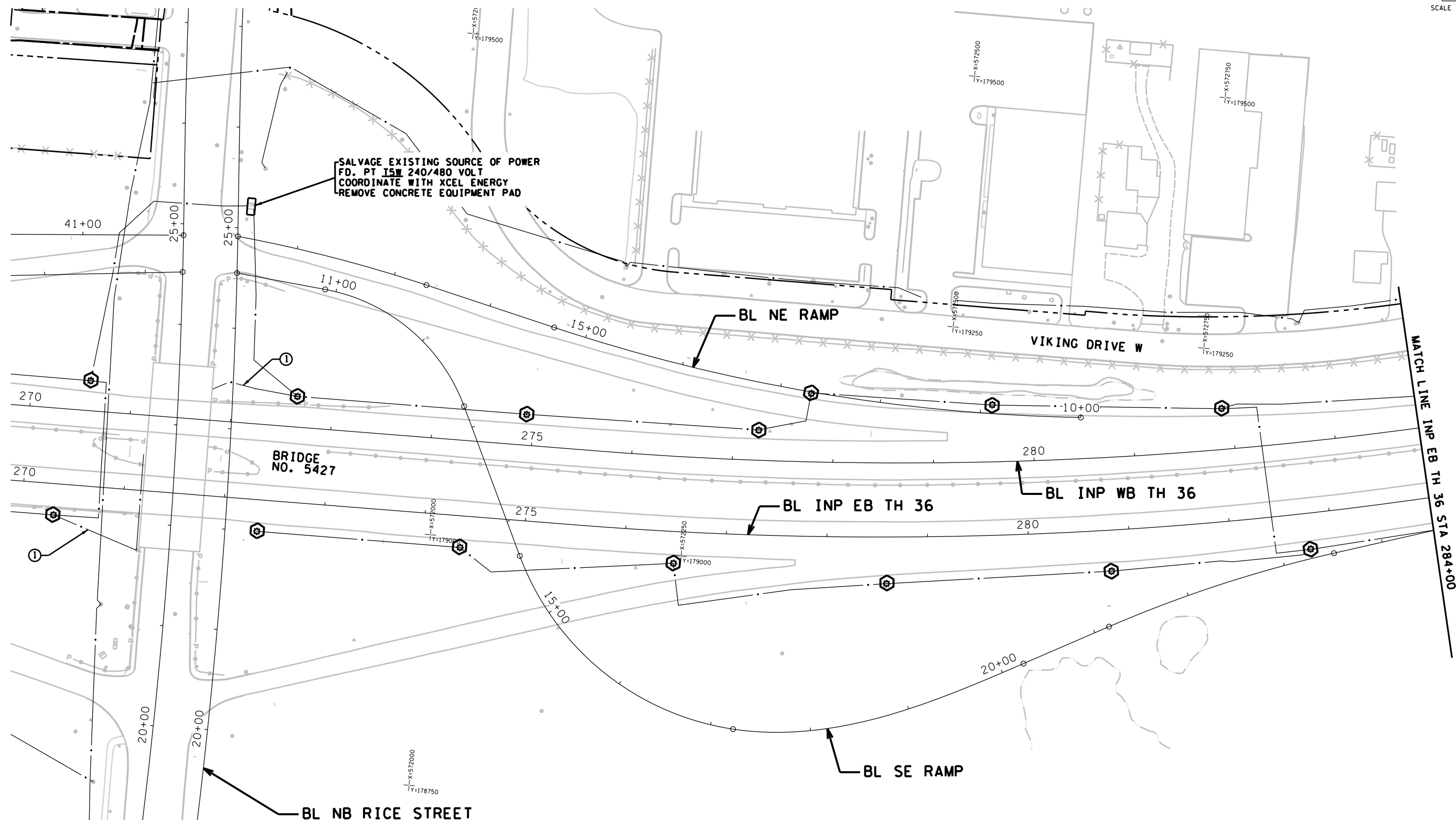
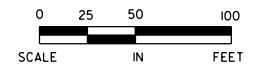
FILE NO.	334
RAMSP108790	
LT2 OF LTH	534

6/08/02 PM

6/7/2012

mitron

S:\PT\RY\Remsp\108790\lighting\2011_05\blit\1r_omsp\108790_lit_rm.dgn



SALVAGE EXISTING SOURCE OF POWER
 FD. PT ISM 240/480 VOLT
 COORDINATE WITH XCEL ENERGY
 REMOVE CONCRETE EQUIPMENT PAD

FINAL PLAN
 CONFORMING TO
 CONST. RECORDS
 DATE TJM 5/30/12

LEGEND	
	EXISTING ARMORED CABLE
	EXISTING LIGHTING UNIT
	EXISTING SERVICE CABINET
	REMOVE LIGHTING UNIT AND CONCRETE BASE

- NOTES:
- DISCONNECT AND TERMINATE ALL SIGN FEEDER CONDUCTORS.
 - CONTRACTOR SHALL MAINTAIN OPERATION OF EXISTING ROADWAY LIGHTING CIRCUITS AND LIGHTING LEVELS AT ALL TIMES DURING CONSTRUCTION.

DESIGN TEAM	1	KST	6/4/12	RECORD DRAWING
DRAWN BY:	MTT			
DESIGNER:	SRH,HLF			
CHECKED BY:	KLE			
NO.	BY	DATE	REVISIONS	

I hereby certify that this plan was prepared by me or under my direct supervision and that I am a duly Licensed Professional Engineer under the laws of the State of Minnesota.
 Certified By: Lic. No. 25087
 Printed Name: BRET W. JOHNSON Date: 3/3/2010



RAMSEY COUNTY, MINNESOTA
TH 36 / RICE STREET (CSAH 49)
 SP NO. 62-649-27 CTB, 6212-165 (TH 36)

SALVAGE AND REMOVAL LIGHTING PLAN
 INP EB TH 36 STA 272+00 TO 284+00

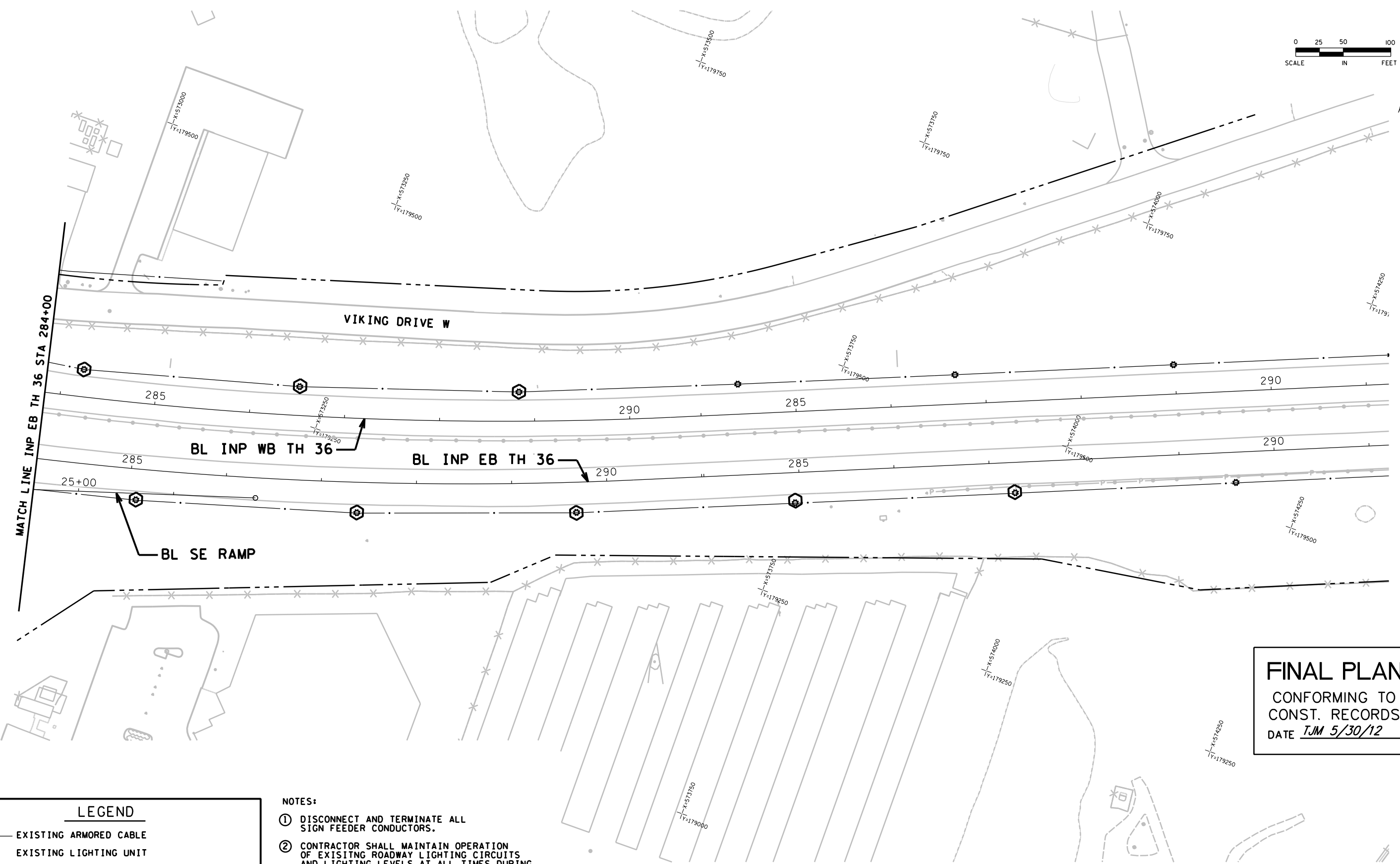
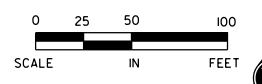
FILE NO.	335
RAMSP08790	
LT3 OF LTH	534

6/08/03 PM

6/7/2012

mtron

S:\PT\VR\Ramsp\108790\Lighting\2011_05\bluit\1r_omsp\108790_lt_rm.dgn



FINAL PLAN
 CONFORMING TO
 CONST. RECORDS
 DATE TJM 5/30/12

LEGEND			
	EXISTING ARMORED CABLE		
	EXISTING LIGHTING UNIT		
	EXISTING SERVICE CABINET		
	REMOVE LIGHTING UNIT AND CONCRETE BASE		

- NOTES:**
- DISCONNECT AND TERMINATE ALL SIGN FEEDER CONDUCTORS.
 - CONTRACTOR SHALL MAINTAIN OPERATION OF EXISTING ROADWAY LIGHTING CIRCUITS AND LIGHTING LEVELS AT ALL TIMES DURING CONSTRUCTION.

DESIGN TEAM	1	KST	6/4/12	RECORD DRAWING
DRAWN BY: <u>MIT</u>				
DESIGNER: <u>SRH,HLF</u>				
CHECKED BY: <u>KLE</u>				
NO.	BY	DATE	REVISIONS	

I hereby certify that this plan was prepared by me or under my direct supervision and that I am a duly Licensed Professional Engineer under the laws of the State of Minnesota.
 Certified By: Bret W. Johnson Lic. No. 25087
 Licensed Professional Engineer
 Printed Name: BRET W. JOHNSON Date: 3/3/2010

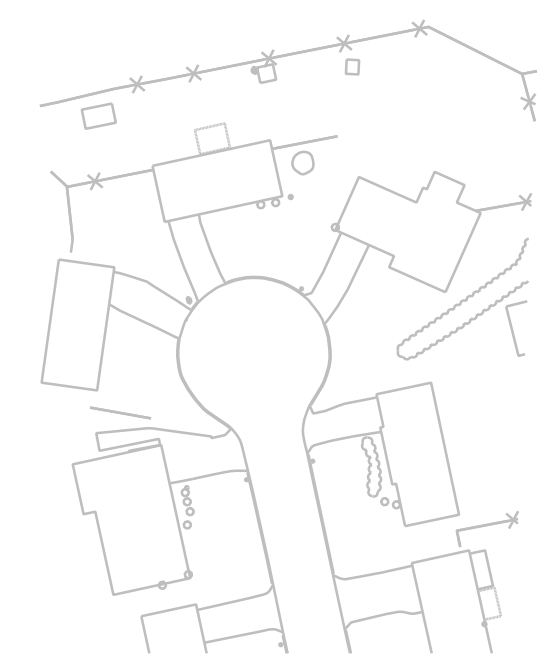
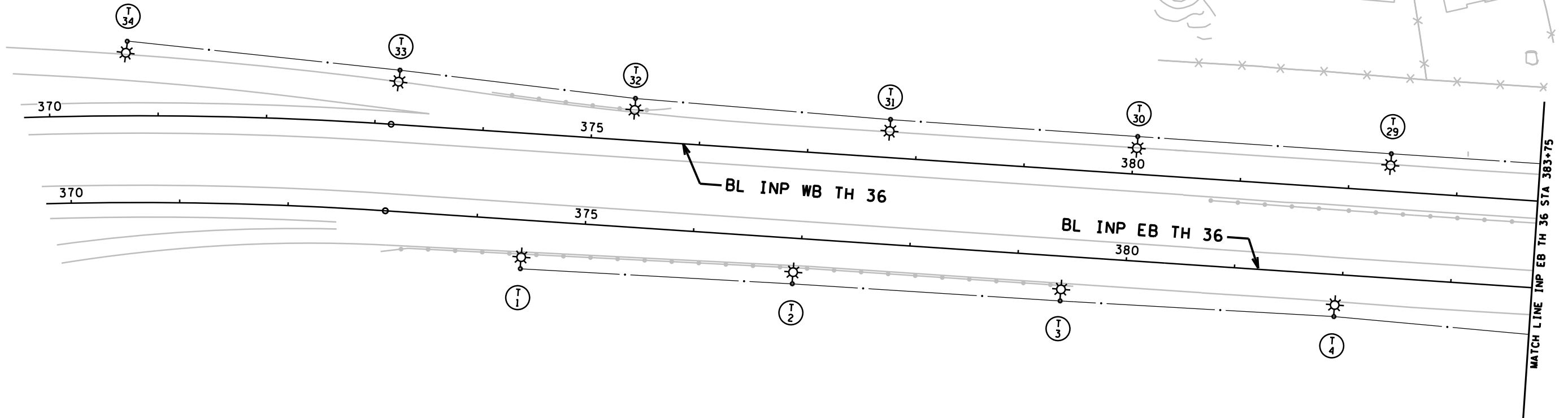
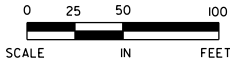
PHONE: (651)490-2000
 3535 VADNAIS CENTER DR.
 ST. PAUL, MN 55110

RAMSEY COUNTY, MINNESOTA
TH 36 / RICE STREET (CSAH 49)
 SP NO. 62-649-27 CTB, 6212-165 (TH 36)

SALVAGE AND REMOVAL LIGHTING PLAN
 INP EB TH 36 STA 284+00 TO 291+00

FILE NO. RAMSP108790	336
LT4 OF LTH	534

6/08:12 PM
6/7/2012
mtron
S:\PT\RAMSP\108790\Lighting\2011_05\blt\1r_08790_11.dgn



FD. PT. T5T

LIGHTING STANDARDS AND BASES						
NO.	LOCATION	STATION	LT.	RT.	TYPE	
T1	TH 36 EB	374+43	-	-	13-40	
T2	TH 36 EB	376+94	-	-	13-40	
T3	TH 36 EB	379+42	-	-	13-40	
T4	TH 36 EB	381+95	-	-	13-40	
T5	TH 36 EB	384+21	-	-	13-40	
T6	TH 36 EB	386+41	-	-	13-40	
T7	TH 36 EB	388+69	-	-	13-40	
T27	TH 36 WB	387+09	-	-	13-40	
T28	TH 36 WB	384+70	-	-	13-40	
T29	TH 36 WB	382+37	-	-	13-40	
T30	TH 36 WB	380+03	-	-	13-40	
T31	TH 36 WB	377+74	-	-	13-40	
T32	TH 36 WB	375+38	-	-	13-40	
T33	TH 36 WB	373+20	-	-	13-40	
T34	TH 36 WB	370+72	-	-	13-40	

LEGEND

- EXISTING LIGHTING UNIT
- EXISTING SOURCE OF POWER
- DIRECT BURIED 4 CONDUCTOR NO. 4 AWG ARMORED CABLE
- EXISTING ARMORED CABLE
- LIGHTING UNIT
- UNDERPASS LIGHTING UNIT
- GROUND ROD (25 OHM OR LESS)
- LIGHTING UNIT NUMBER
- 3" NMC SCH. 80 (DIRECT BORE)
- 2" CONDUIT
- PULL BOX

FINAL PLAN
CONFORMING TO
CONST. RECORDS
DATE TJM 5/30/12

DESIGN TEAM	1	KST	6/4/12
DRAWN BY: MTT			
DESIGNER: SRH,HLF			
CHECKED BY: KLE			

NO.	BY	DATE	REVISIONS

I hereby certify that this plan was prepared by me or under my direct supervision and that I am a duly Licensed Professional Engineer under the laws of the State of Minnesota.
Certified By: Lic. No. 25087
Printed Name: BRET W. JOHNSON Date: 3/3/2010



RAMSEY COUNTY, MINNESOTA
TH 36 / RICE STREET (CSAH 49)
SP NO. 62-649-27 CTB, 6212-165 (TH 36)

LIGHTING PLAN
INP EB TH 36 STA 370+00 TO 383+75

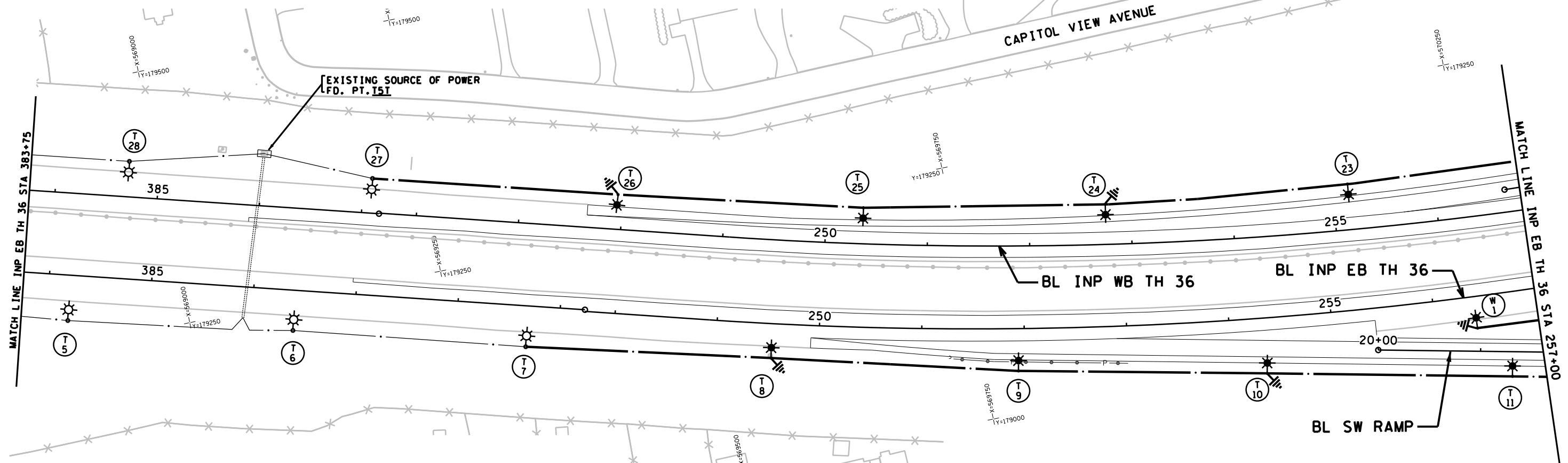
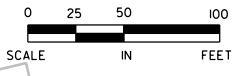
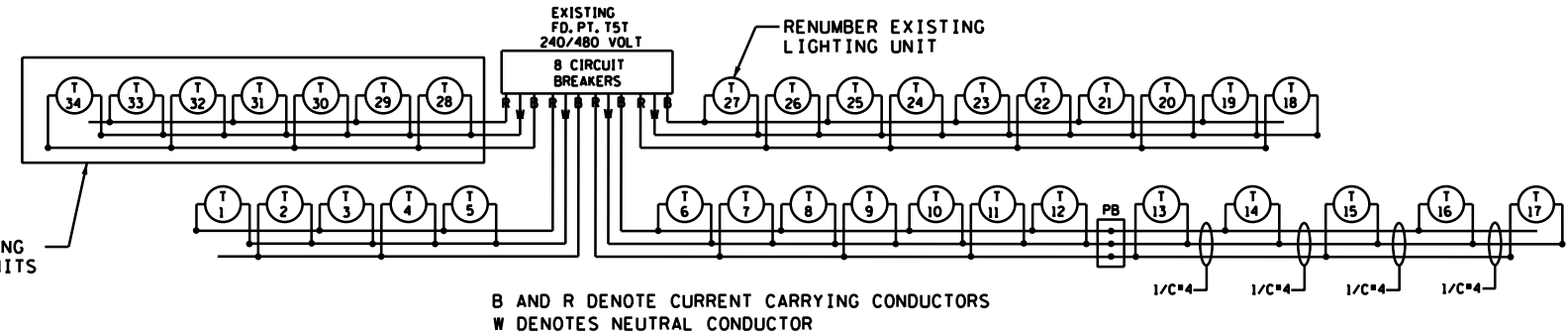
FILE NO. **337A**
RAMSP08790
LT5A
OF LTI **534**

6/08/13 PM

6/7/2012

mtron

S:\PT\RAMSP\108790\Lighting\2011_05\blt\RAMSP108790.lt.dgn



FD. PT. T5T

LIGHTING STANDARDS AND BASES					
NO.	LOCATION	STATION	LT.	RT.	TYPE
T8	TH 36 EB	249+54	-	-	9-40
T9	TH 36 EB	251+94	-	-	9-40
T10	TH 36 EB	254+34	-	-	9-40
T11	SW RAMP	21+31	-	-	9-40
T12	SW RAMP	23+71	-	-	9-40
T13	SW RAMP	26+11	-	-	6B-40
T14	SW RAMP	28+51	-	-	6B-40
T15	SW RAMP	30+58	-	-	6B-40
T16	SW RAMP	32+96	-	-	6B-40
T17	SW RAMP	35+46	-	-	9-40
T18	NW RAMP	43+98	-	-	9-40
T19	NW RAMP	46+38	-	-	9-40
T20	NW RAMP	48+78	-	-	9-40
T21	NW RAMP	51+18	-	-	9-40
T22	NW RAMP	53+58	-	-	9-40
T23	TH 36 WB	255+15	-	-	9-40
T24	TH 36 WB	252+75	-	-	9-40
T25	TH 36 WB	250+35	-	-	9-40
T26	TH 36 WB	247+94	-	-	9-40

LEGEND

- EXISTING LIGHTING UNIT
- EXISTING SOURCE OF POWER
- DIRECT BURIED 4 CONDUCTOR NO.4 AWG ARMORED CABLE
- EXISTING ARMORED CABLE
- LIGHTING UNIT
- UNDERPASS LIGHTING UNIT
- GROUND ROD (25 OHM OR LESS)
- LIGHTING UNIT NUMBER
- 3" NMC SCH. 80 (DIRECT BORE)
- 2" CONDUIT
- PULL BOX

FINAL PLAN
CONFORMING TO
CONST. RECORDS
DATE TJM 5/30/12

DESIGN TEAM	1	KST	6/4/12
DRAWN BY:	MTT		
DESIGNER:	SRH,HLF		
CHECKED BY:	KLE		

NO.	BY	DATE	REVISIONS

I hereby certify that this plan was prepared by me or under my direct supervision and that I am a duly Licensed Professional Engineer under the laws of the State of Minnesota.

Certified By: Lic. No. 25087
Printed Name: BRET W. JOHNSON Date: 3/3/2010

SEH

PHONE: (651)490-2000
3535 VADNAIS CENTER DR.
ST. PAUL, MN 55110

RAMSEY COUNTY, MINNESOTA
TH 36 / RICE STREET (CSAH 49)
SP NO. 62-649-27 CTB, 6212-165 (TH 36)

LIGHTING PLAN
INP EB TH 36 STA 383+75 TO 257+00

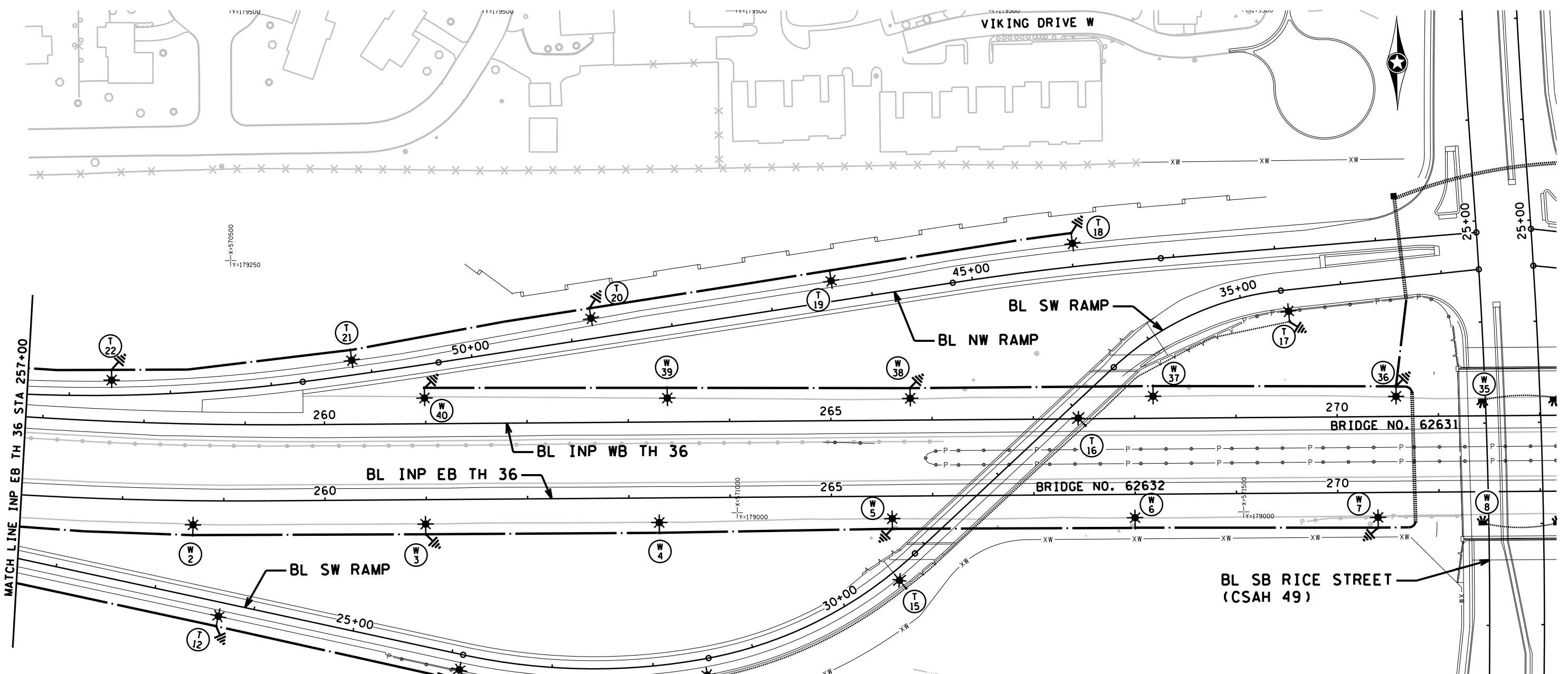
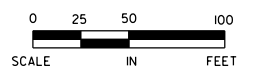
FILE NO. **337B**
RAMSP108790
LT5B
OF LTH **534**

6/08:14 PM

6/7/2012

mitron

S:\PT\RCamps\108790\Lighting\2011_06\blth36_ramps\108790_lf.dgn



LEGEND

- EXISTING LIGHTING UNIT
- EXISTING SOURCE OF POWER
- DIRECT BURIED 4 CONDUCTOR NO. 4 AWG ARMORED CABLE
- EXISTING ARMORED CABLE
- LIGHTING UNIT
- UNDERPASS LIGHTING UNIT
- GROUND ROD (25 OHM OR LESS)
- LIGHTING UNIT NUMBER
- 3" NMC SCH. 80 (DIRECT BORE)
- 2" CONDUIT
- PULL BOX

FD. PT. T5W

LIGHTING STANDARDS AND BASES

NO.	LOCATION	STATION	LT.	RT.	TYPE
W1	INP TH 36 EB	256+40	-	-	9-40
W2	INP TH 36 EB	258+70	-	-	9-40
W3	INP TH 36 EB	261+00	-	-	9-40
W4	INP TH 36 EB	263+30	-	-	9-40
W5	INP TH 36 EB	265+60	-	-	9-40
W6	INP TH 36 EB	268+00	-	-	9-40
W7	INP TH 36 EB	270+40	-	-	9-40
W10	INP TH 36 EB	273+55	-	-	9-40
W11	INP TH 36 EB	276+30	-	-	9-40
W12	INP TH 36 EB	278+60	-	-	9-40
W13	INP TH 36 EB	280+90	-	-	9-40
W14	SE RAMP	23+58	-	-	9-40
W15	SE RAMP	25+88	-	-	9-40
W16	INP TH 36 EB	287+59	-	-	9-40
W17	INP TH 36 EB	289+84	-	-	9-40
W18	INP TH 36 EB	285+04	-	-	9-40
W19	INP TH 36 EB	287+29	-	-	9-40

FINAL PLAN
 CONFORMING TO
 CONST. RECORDS
 DATE *TJM 5/30/12*

DESIGN TEAM	1	KST	6/4/12	RECORD DRAWING
DRAWN BY:	MIT			
DESIGNER:	SRH,HLF			
CHECKED BY:	KLE			
NO.	BY	DATE	REVISIONS	

I hereby certify that this plan was prepared by me or under my direct supervision and that I am a duly Licensed Professional Engineer under the laws of the State of Minnesota.

Certified By: *Bret W. Johnson* Lic. No. 25087
 Printed Name: BRET W. JOHNSON Date: 3/3/2010



RAMSEY COUNTY, MINNESOTA
TH 36 / RICE STREET (CSAH 49)
 SP NO. 62-649-27 CTB, 6212-165 (TH 36)

LIGHTING PLAN
 INP EB TH 36 STA 257+00 TO 272+00

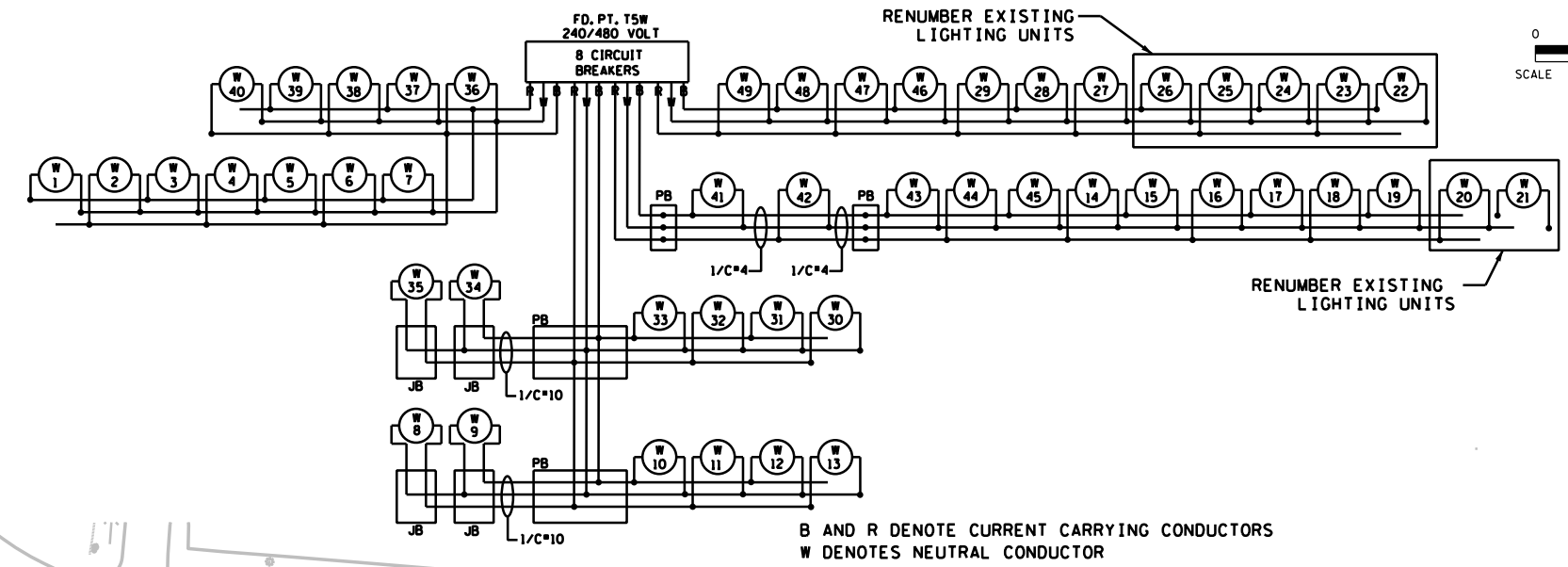
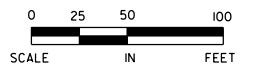
FILE NO. **338**
 RAMSP08790
 LT6 OF LTH
534

6/08/15 PM

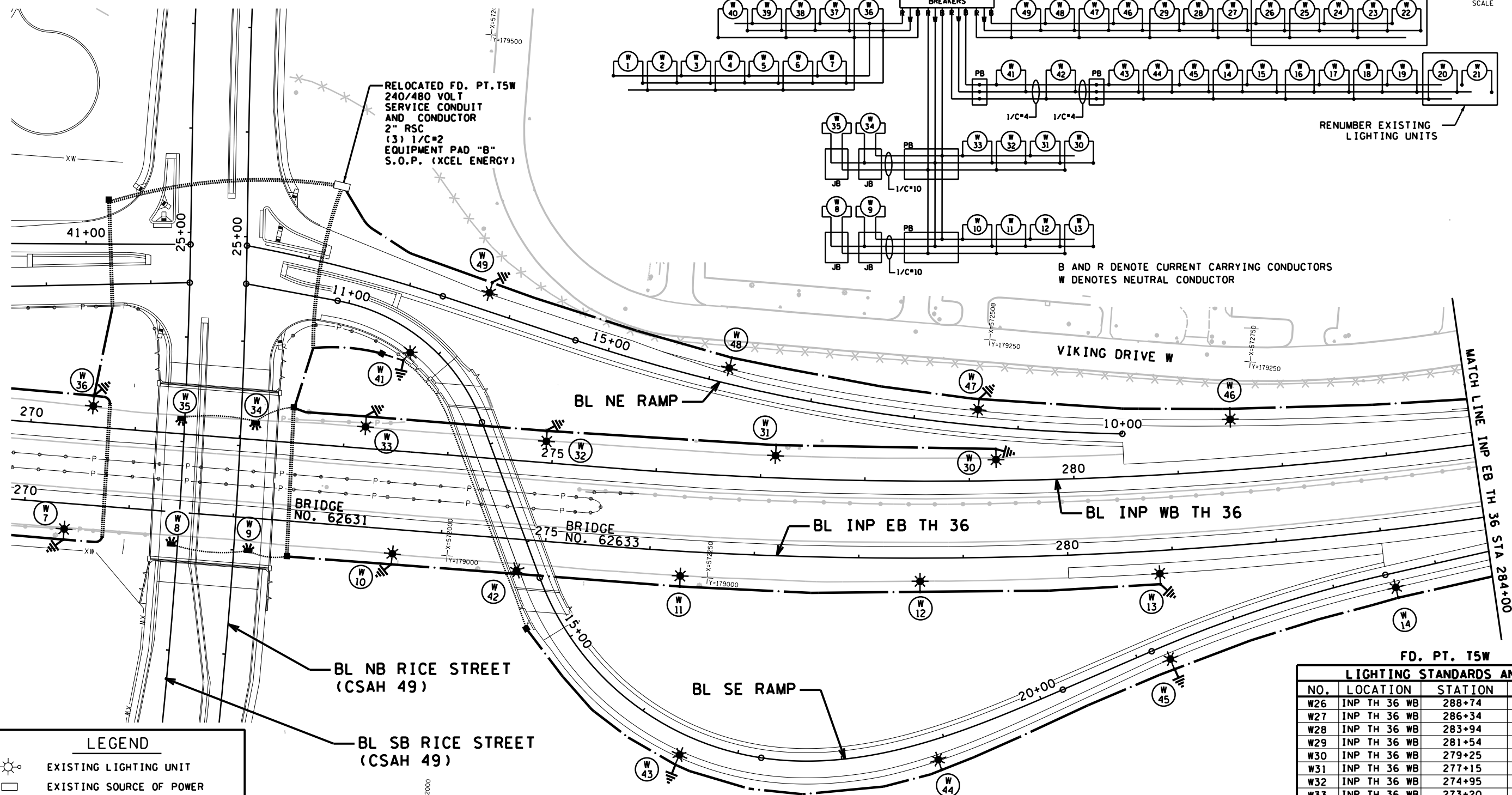
6/7/2012

mtron

S:\PT\RAMSP\108790\Lighting\2011_05\blth36_ramps\108790.lt.dgn



RELOCATED FD. PT. T5W
240/480 VOLT
SERVICE CONDUIT
AND CONDUCTOR
2" RSC
(3) 1/C=2
EQUIPMENT PAD "B"
S.O.P. (XCEL ENERGY)



LEGEND

- EXISTING LIGHTING UNIT
- EXISTING SOURCE OF POWER
- DIRECT BURIED 4 CONDUCTOR NO. 4 AWG ARMORED CABLE
- EXISTING ARMORED CABLE
- LIGHTING UNIT
- UNDERPASS LIGHTING UNIT
- GROUND ROD (25 OHM OR LESS)
- LIGHTING UNIT NUMBER
- 3" NMC SCH. 80 (DIRECT BORE)
- 2" CONDUIT
- PULL BOX

FINAL PLAN
CONFORMING TO
CONST. RECORDS
DATE TJM 5/30/12

FD. PT. T5W LIGHTING STANDARDS AND BASES

NO.	LOCATION	STATION	LT. RT.	TYPE
W26	INP TH 36 WB	288+74	-	9-40
W27	INP TH 36 WB	286+34	-	9-40
W28	INP TH 36 WB	283+94	-	9-40
W29	INP TH 36 WB	281+54	-	9-40
W30	INP TH 36 WB	279+25	-	9-40
W31	INP TH 36 WB	277+15	-	9-40
W32	INP TH 36 WB	274+95	-	9-40
W33	INP TH 36 WB	273+20	-	9-40
W36	INP TH 36 WB	270+58	-	9-40
W37	INP TH 36 WB	268+18	-	9-40
W38	INP TH 36 WB	265+78	-	9-40
W39	INP TH 36 WB	263+38	-	9-40
W40	INP TH 36 WB	260+98	-	9-40
W41	SE RAMP	11+77	-	9-40
W42	SE RAMP	14+22	-	6B-40
W43	SE RAMP	16+49	-	9-40
W44	SE RAMP	18+89	-	9-40
W45	SE RAMP	21+29	-	9-40
W46	NE RAMP	11+40	-	9-40
W47	NE RAMP	13+80	-	9-40
W48	NE RAMP	16+20	-	9-40

DESIGN TEAM	NO.	BY	DATE	REVISIONS
1	KST	6/4/12		RECORD DRAWING

I hereby certify that this plan was prepared by me or under my direct supervision and that I am a duly Licensed Professional Engineer under the laws of the State of Minnesota.

Certified By: Lic. No. 25087
Printed Name: BRET W. JOHNSON Date: 3/3/2010



RAMSEY COUNTY, MINNESOTA
TH 36 / RICE STREET (CSAH 49)
SP NO. 62-649-27 CTB, 6212-165 (TH 36)

LIGHTING PLAN
INP EB TH 36 STA 272+00 TO 284+00

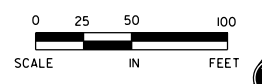
FILE NO. **339**
RAMSP108790
LT7 OF LTH
534

6:08:17 PM

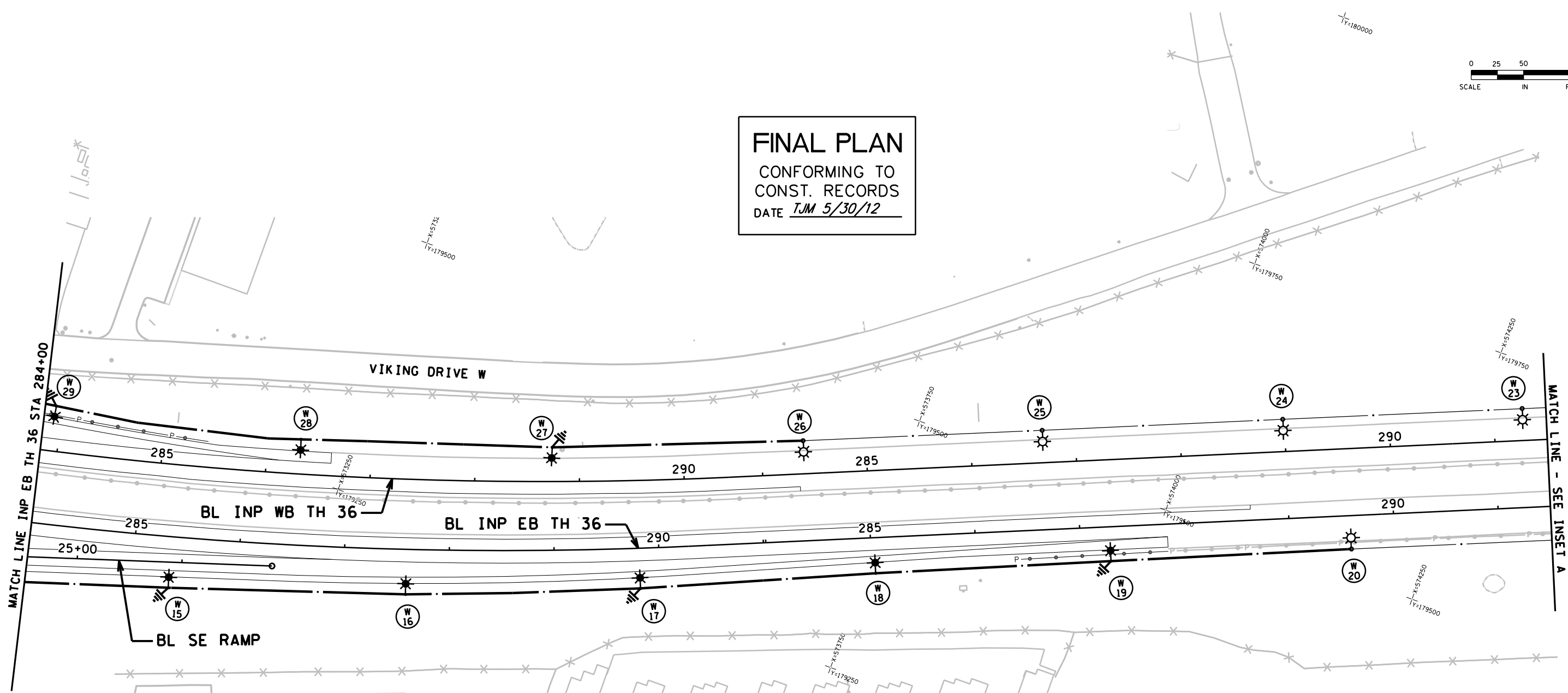
6/7/2012

mitron

S:\PT\RCamps\108790\Lighting\2011_05\bluit\1r_omsp\108790_lt.dgn

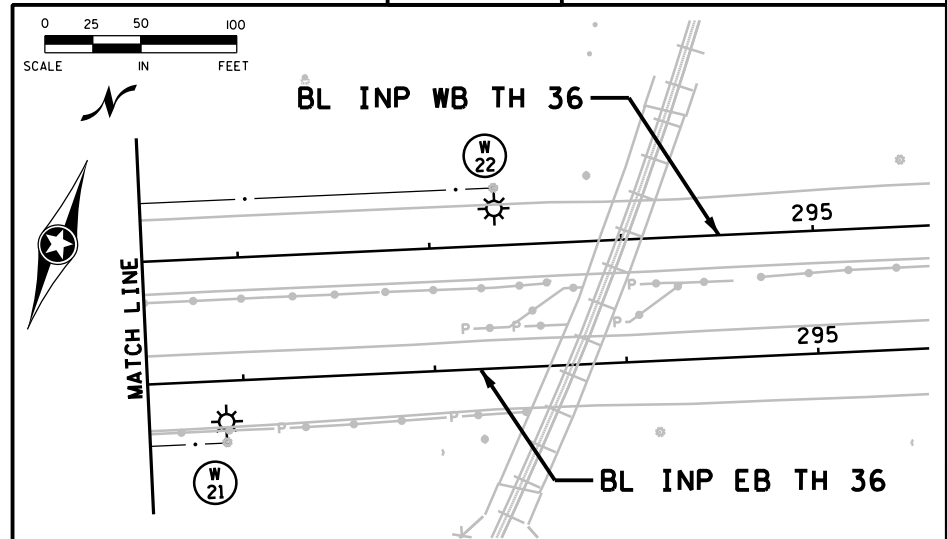


FINAL PLAN
 CONFORMING TO
 CONST. RECORDS
 DATE TJM 5/30/12



MATCH LINE - SEE INSET A

INSET A



LEGEND

- EXISTING LIGHTING UNIT
- EXISTING SOURCE OF POWER
- DIRECT BURIED 4 CONDUCTOR NO.4 AWG ARMORED CABLE
- EXISTING ARMORED CABLE
- LIGHTING UNIT
- UNDERPASS LIGHTING UNIT
- GROUND ROD (25 OHM OR LESS)
- LIGHTING UNIT NUMBER
- 3" NMC SCH. 80 (DIRECT BORE)
- 2" CONDUIT
- PULL BOX

FD. PT. T5W

LIGHTING STANDARDS AND BASES

NO.	LOCATION	STATION	LT.	RT.	TYPE
W8	INP TH 36 EB	271+42	-	-	L
W9	INP TH 36 EB	272+15	-	-	L
W34	INP TH 36 WB	271+15	-	-	L
W35	INP TH 36 WB	271+42	-	-	L

DESIGN TEAM	1	KST	6/4/12	RECORD DRAWING
DRAWN BY: <u>MIT</u>				
DESIGNER: <u>SRH,HLF</u>				
CHECKED BY: <u>KLE</u>				
NO.	BY	DATE	REVISIONS	

I hereby certify that this plan was prepared by me or under my direct supervision and that I am a duly Licensed Professional Engineer under the laws of the State of Minnesota.

Certified By: Bret W. Johnson Lic. No. 25087
 Licensed Professional Engineer
 Printed Name: BRET W. JOHNSON Date: 3/3/2010



RAMSEY COUNTY, MINNESOTA
TH 36 / RICE STREET (CSAH 49)
 SP NO. 62-649-27 CTB, 6212-165 (TH 36)

LIGHTING PLAN
 INP EB TH 36 STA 284+00 TO 291+00

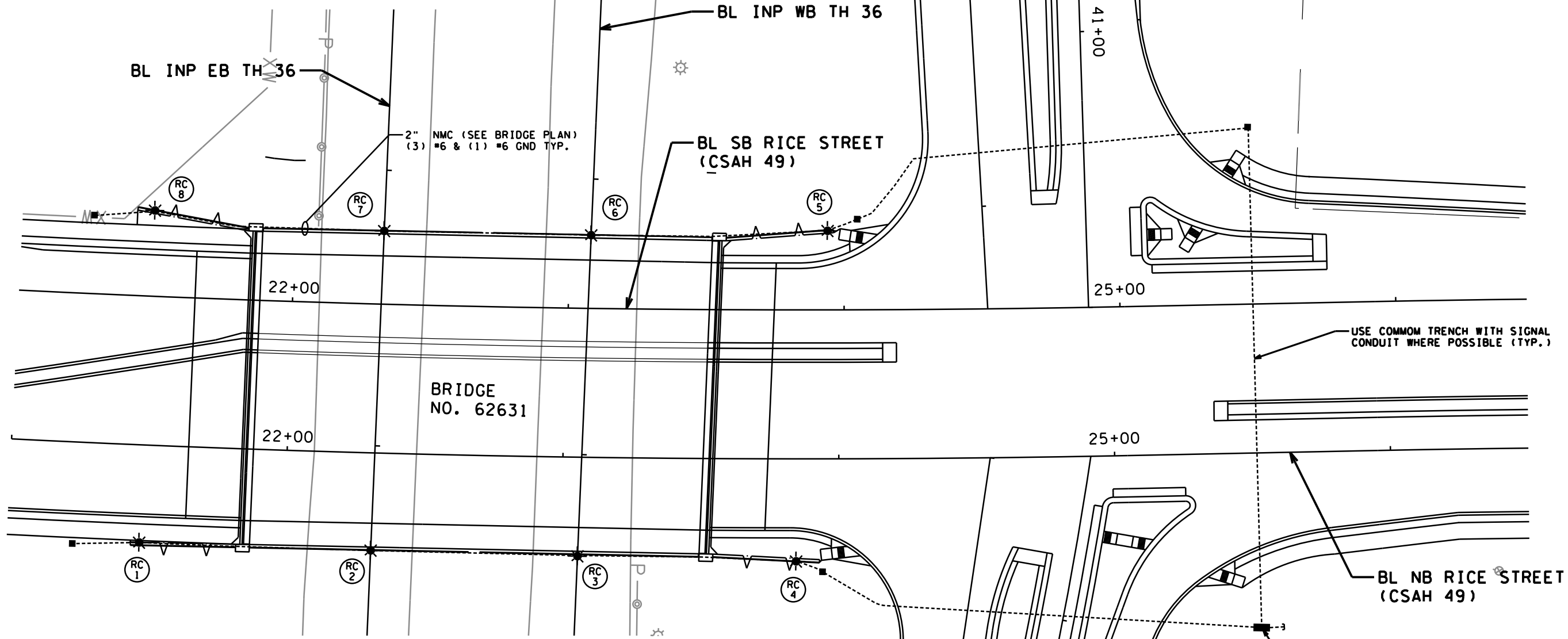
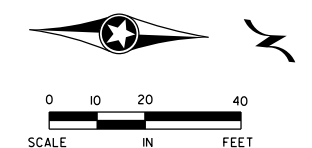
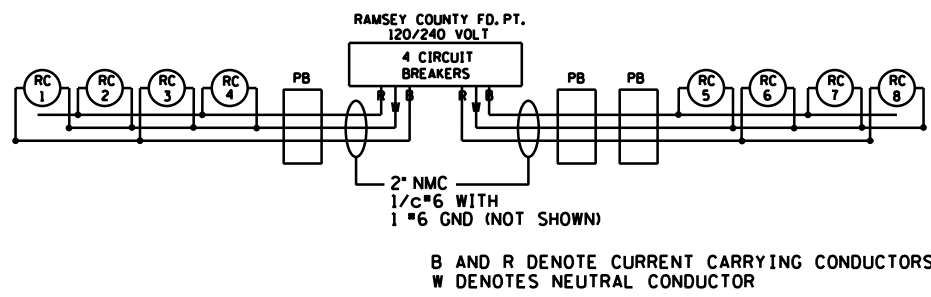
FILE NO. **340**
 RAMSP08790
 LT8 OF LTH
534

6/08/18 PM

6/7/2012

mtron

S:\PT\RAMSP\108790\Lighting\2011_05\blt\ramsp108790.lt.dgn



USE COMMON TRENCH WITH SIGNAL CONDUIT WHERE POSSIBLE (TYP.)

NEW RAMSEY COUNTY SIGNAL SERVICE CABINET SEE SIGNAL PLAN

LEGEND

- LIGHTING UNIT TYPE SPECIAL
- 2" CONDUIT
- LIGHTING UNIT NUMBER
- PULL BOX

RAMSEY COUNTY FD. PT LIGHTING STANDARDS AND BASES

NO.	LOCATION	STATION	LT.	RT.	TYPE
RC1	NB RICE ST	21+48	-	-	SPECIAL
RC2	NB RICE ST	22+31	-	-	SPECIAL
RC3	NB RICE ST	23+06	-	-	SPECIAL
RC4	NB RICE ST	23+85	-	-	SPECIAL
RC5	SB RICE ST	23+94	-	-	SPECIAL
RC6	SB RICE ST	23+08	-	-	SPECIAL
RC7	SB RICE ST	22+33	-	-	SPECIAL
RC8	SB RICE ST	21+49	-	-	SPECIAL

FINAL PLAN
 CONFORMING TO
 CONST. RECORDS
 DATE TJM 5/30/12

DESIGN TEAM	1	KST	6/4/12	RECORD DRAWING
DRAWN BY:	MTT			
DESIGNER:	SRH,HLF			
CHECKED BY:	KLE			
NO.	BY	DATE	REVISIONS	

I hereby certify that this plan was prepared by me or under my direct supervision and that I am a duly Licensed Professional Engineer under the laws of the State of Minnesota.
 Certified By: *Bret W. Johnson* Lic. No. 25087
 Licensed Professional Engineer
 Printed Name: BRET W. JOHNSON Date: 3/3/2010



RAMSEY COUNTY, MINNESOTA
TH 36 / RICE STREET (CSAH 49)
 SP NO. 62-649-27 CTB, 6212-165 (TH 36)

RICE STREET BRIDGE LIGHTING

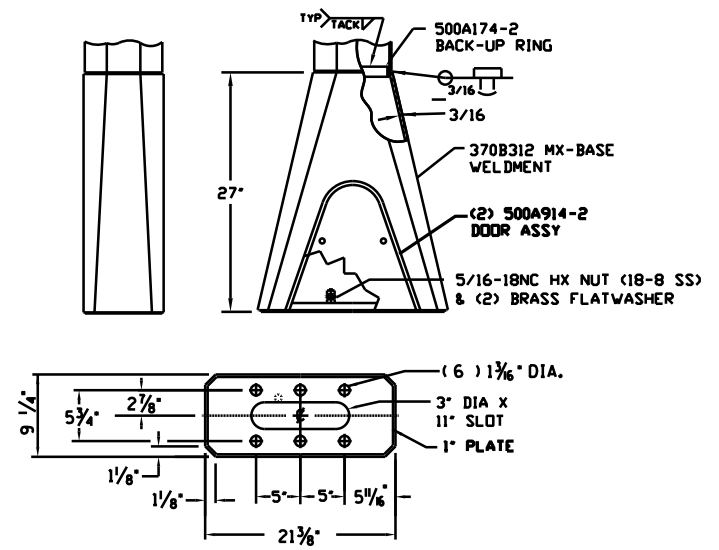
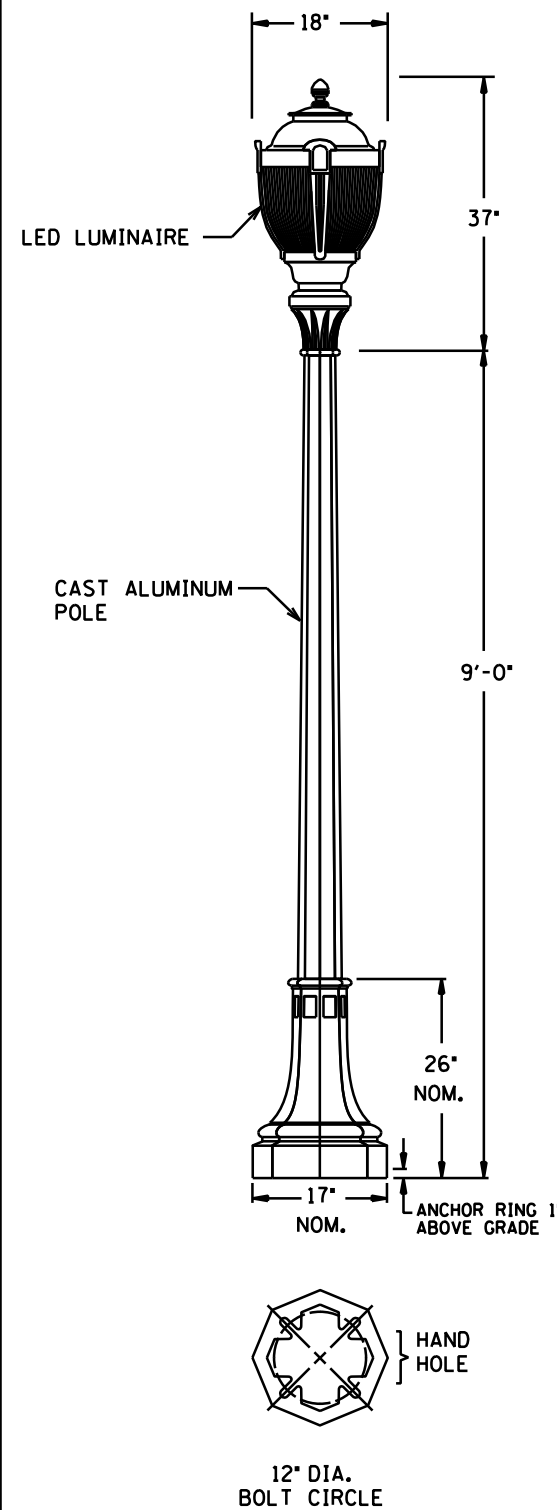
FILE NO. **341**
 RAMSP08790
 LT9 OF LTH
534

6/08/19 PM

6/7/2012

mitron

S:\PT\RY\Remsp\108790\lighting\2011_05\bulit\108790.dgn



BASE PLATE DETAIL FOR BRIDGE POLES AND MEDIAN BARRIER POLES WITH 6 ANCHOR BOLTS

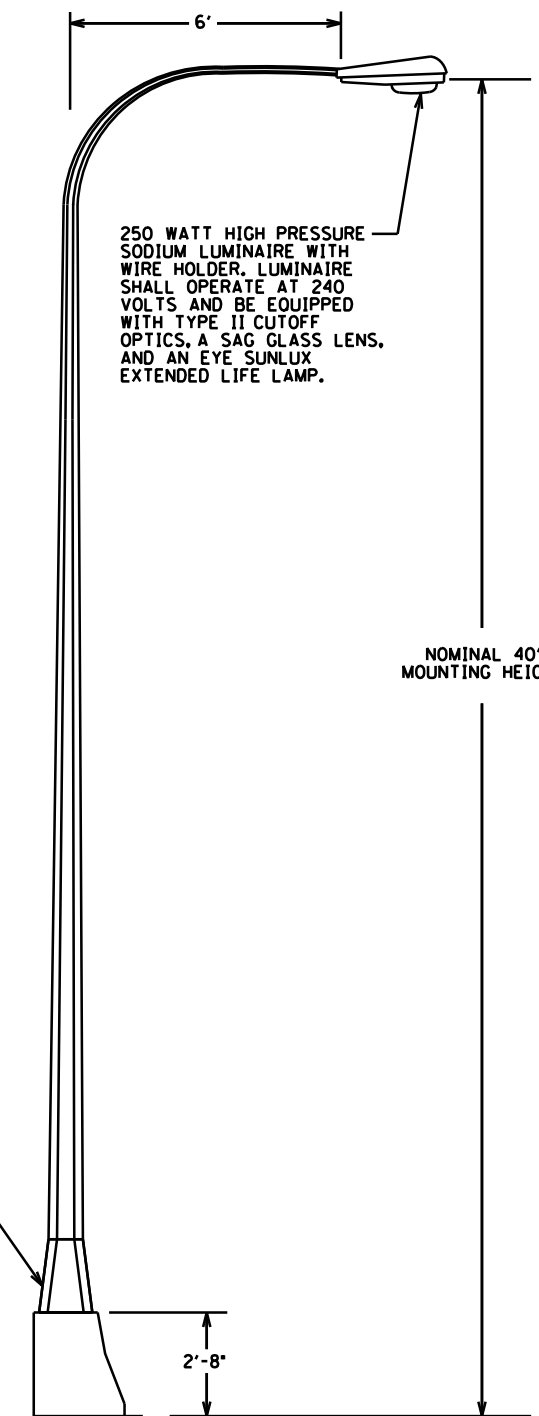
NOTES:

- SKIRT MATERIAL-HIGH STRENGTH LOW ALLOY STEEL 50,000 PSI MIN YIELD PER ASTM A607 (A606 IF SELF WEATHERING) BASE PLATE MATERIAL 36,000 PSI MIN YIELD PER ASTM A36 (A588 IF SELF WEATHERING)
- FINISH-TO MATCH POLE

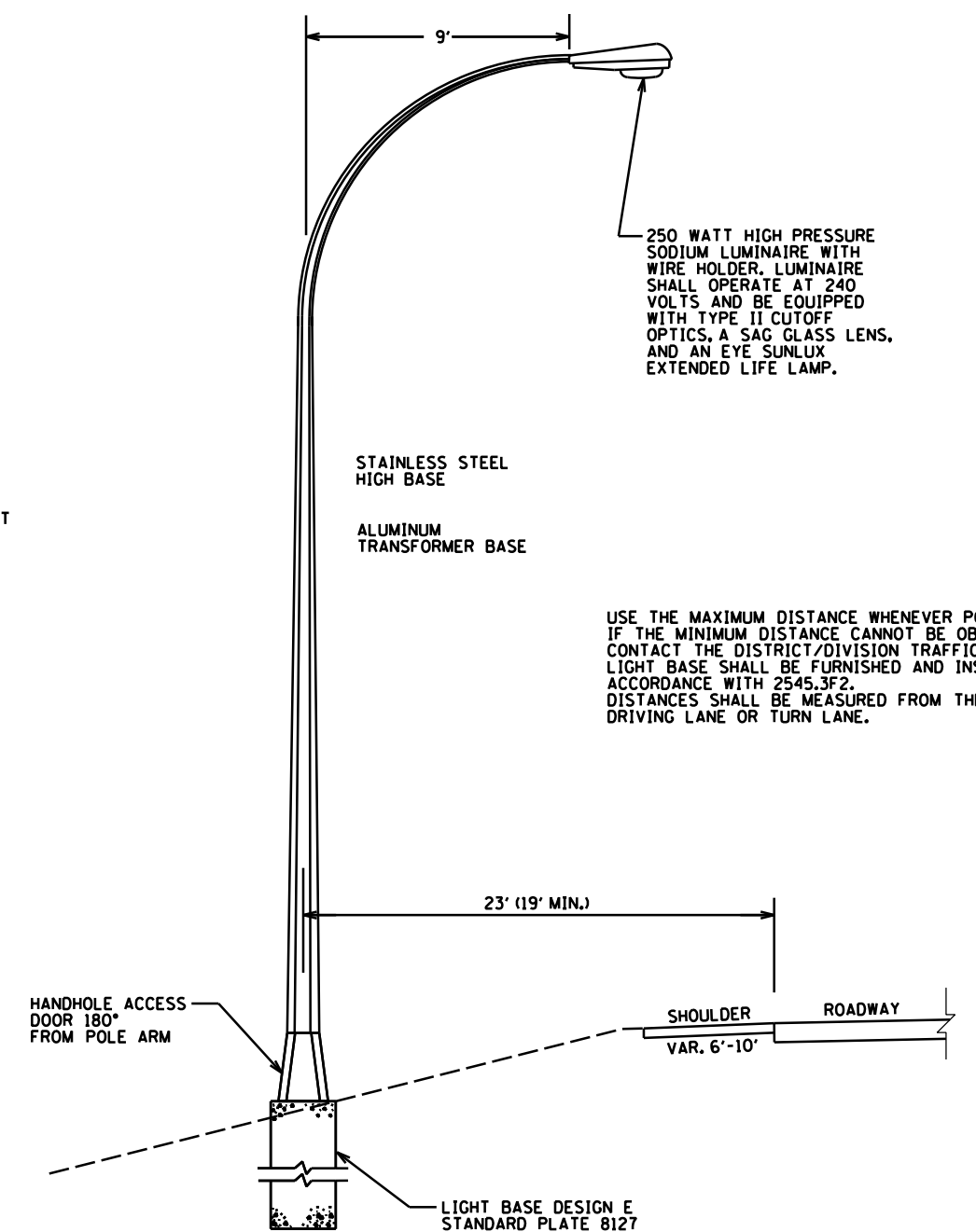
(2 DOOR)

ITEM NO	PART NO	DESCRIPTION
1	370B312-1	SKIRT WELDMENT 3/16X9.6DAC (6 BOLT)
2	370B313-1	(2) SKIRT HALF 3/16X9.6DAC (WITH DOOR)
3	500A914-2	DOOR ASSY

HANDHOLE ACCESS DOOR 180° & 0° FROM POLE ARM



LIGHTING UNIT TYPE 6B-40



LIGHTING UNIT TYPE 9-40 (BREAKAWAY)

FINAL PLAN
 CONFORMING TO
 CONST. RECORDS
 DATE TJM 5/30/12

LIGHTING UNIT TYPE SPECIAL

DESIGN TEAM	1	KST	6/4/12	RECORD DRAWING
DRAWN BY:	MTT			
DESIGNER:	SRH,HLF			
CHECKED BY:	KLE			
NO.	BY	DATE	REVISIONS	

I hereby certify that this plan was prepared by me or under my direct supervision and that I am a duly Licensed Professional Engineer under the laws of the State of Minnesota.
 Certified By: Bret W. Johnson Lic. No. 25087
 Printed Name: BRET W. JOHNSON Date: 3/3/2010

SEH
 PHONE: (651)490-2000
 3535 VADNAIS CENTER DR.
 ST. PAUL, MN 55110

RAMSEY COUNTY, MINNESOTA
TH 36 / RICE STREET (CSAH 49)
 SP NO. 62-649-27 CTB, 6212-165 (TH 36)

LIGHTING DETAILS

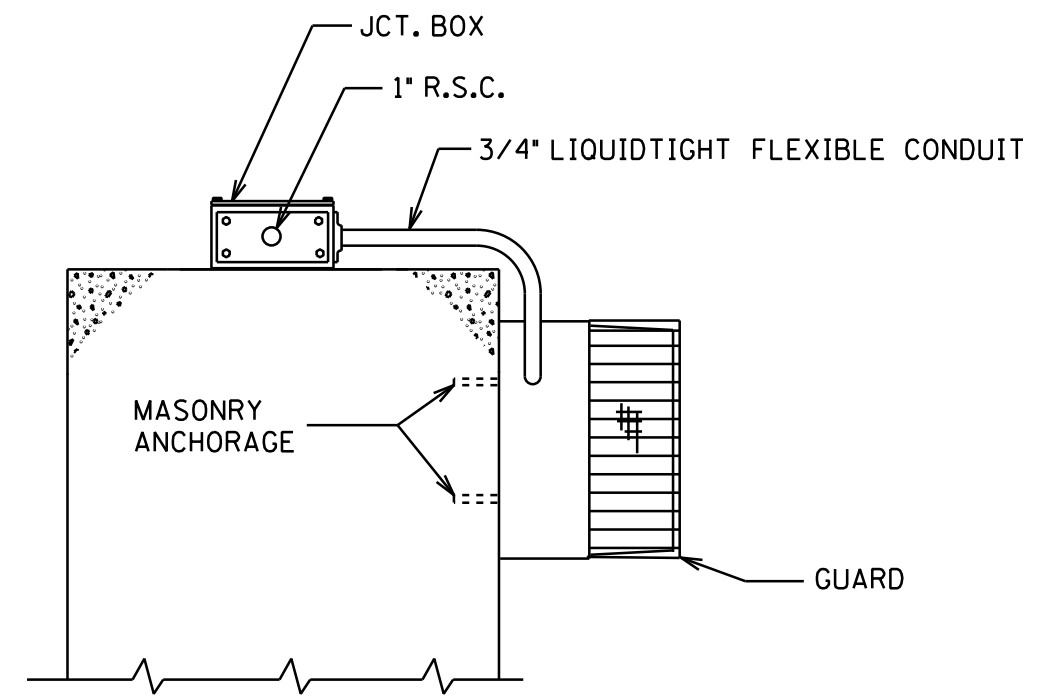
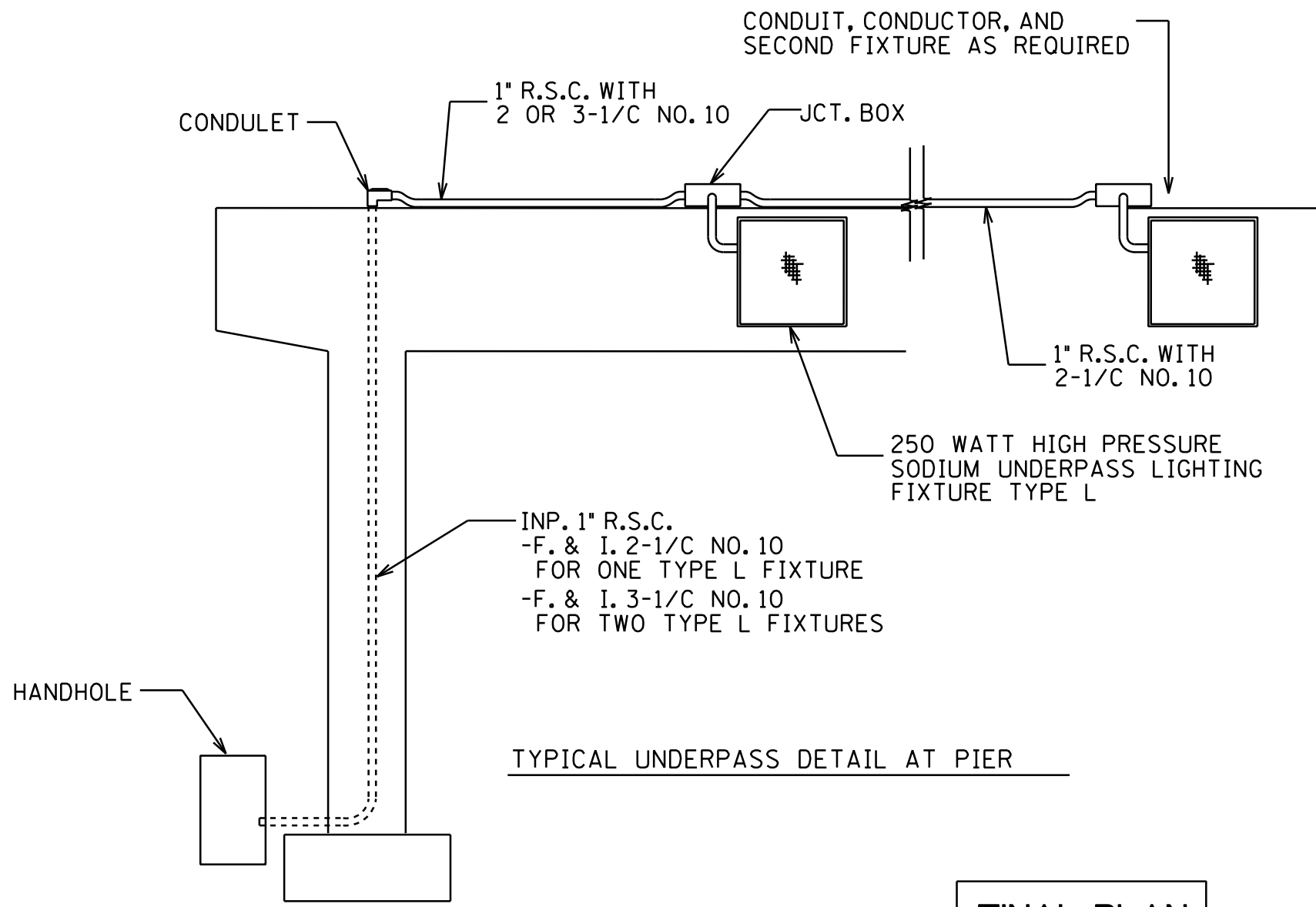
FILE NO. **342**
 RAMSP08790
 LT10
 OF LTH **534**

6:08:19 PM

6/7/2012

mtron

S:\PT\Ramsp\108790\Lighting\2011_osb\lht\ramsp\108790_lht_details.dgn



UNDERPASS LIGHTING FIXTURE TYPE L
250 WATT HIGH PRESSURE SODIUM

1. THE JUNCTION BOXES SHALL BE 8-1/2"L. X 8-1/2"W. X 4"D. WITH REMOVABLE HUB PLATES AND MOUNTING LUGS .
2. FASTEN RIGID STEEL CONDUIT WITH CABLE CLAMPS ABOUT 5'-0" ON CENTER.
3. FASTEN CLAMPS AND JUNCTION BOXES TO CONCRETE WITH MASONRY ANCHORAGES OR POWER ACTIVATED STUDS.
4. LUMINAIRE SHALL OPERATE AT 240 VOLTS AND BE EQUIPPED WITH AN EYE SUNLUX EXTENDED LIFE LAMP.

FINAL PLAN
CONFORMING TO
CONST. RECORDS
DATE TJM 5/30/12

DESIGN TEAM	1	KST	6/4/12	RECORD DRAWING
DRAWN BY: <u>MTT</u>				
DESIGNER: <u>SRH,HLF</u>				
CHECKED BY: <u>KLE</u>				
NO.	BY	DATE	REVISIONS	

I hereby certify that this plan was prepared by me or under my direct supervision and that I am a duly Licensed Professional Engineer under the laws of the State of Minnesota.
Certified By: Bret W. Johnson Lic. No. 25087
Printed Name: BRET W. JOHNSON Date: 3/3/2010



RAMSEY COUNTY, MINNESOTA
TH 36 / RICE STREET (CSAH 49)
SP NO. 62-649-27 CTB, 6212-165 (TH 36)

LIGHTING DETAILS

FILE NO. **343**
RAMSP108790
LT11
OF LTH **534**