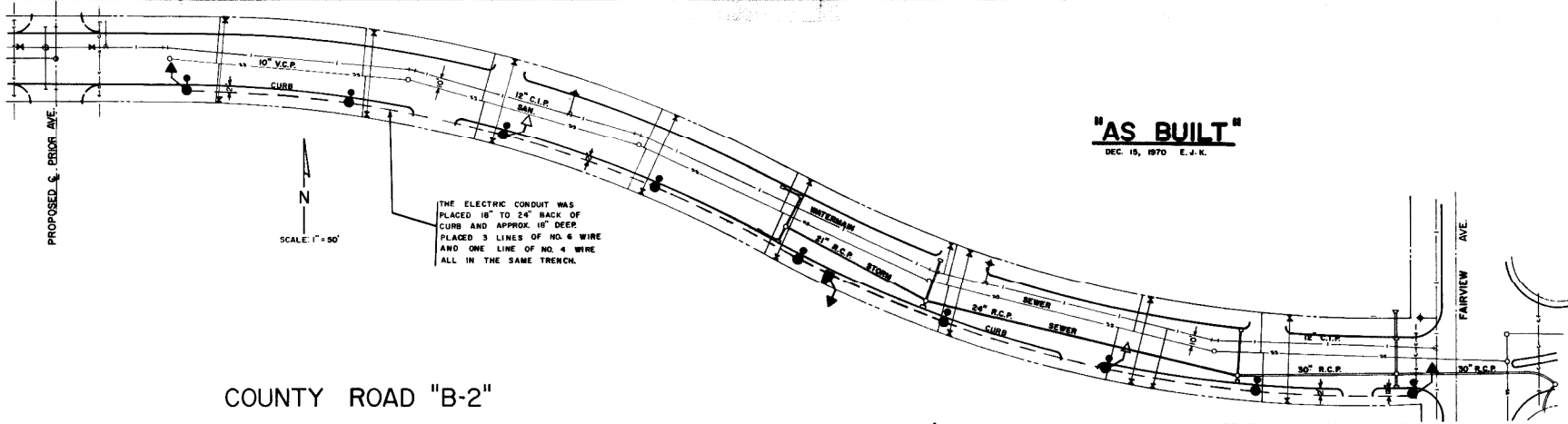


COUNTY ROAD "B-2"

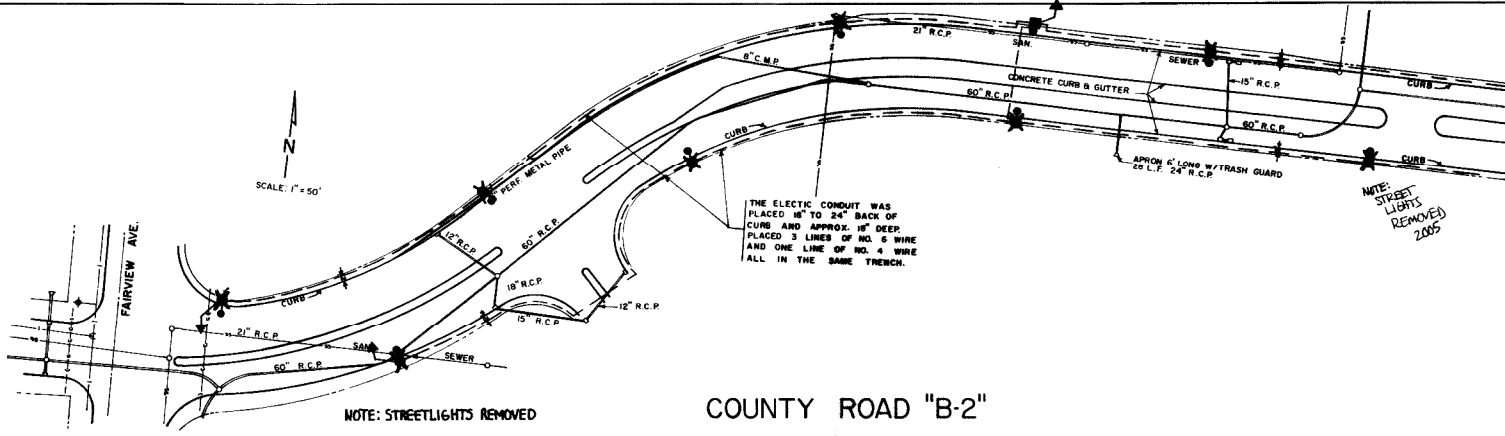
2



**"AS BUILT"**  
DEC. 15, 1970 E.J.K.

COUNTY ROAD "B-2"

3

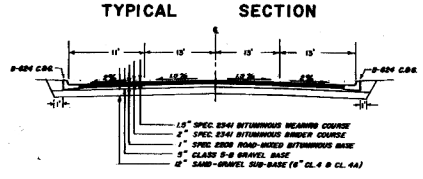
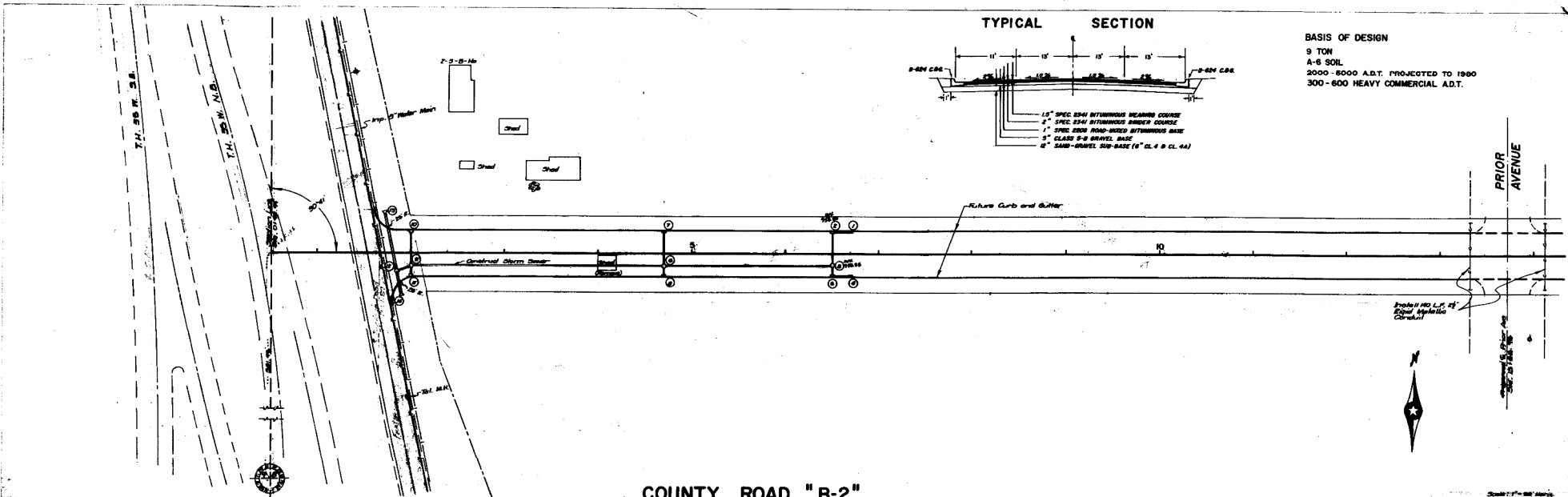


LEGEND	
●	• 250 Watt Mercury Lighting Unit
●	• Feed Point
---	- Distribution Circuit
⚡	- Grounding Wire To 25 Ohm Ground
⚡	- Grounding Wire To Ground Rod

ENGINEERING DEPT.  
VILLAGE OF ROSEVILLE  
**ORNAMENTAL STREET LIGHTING P-70-9**  
Drawn By: D.W.S. Approved By:  
Date: 7-15-70 SHEET 1 OF 2

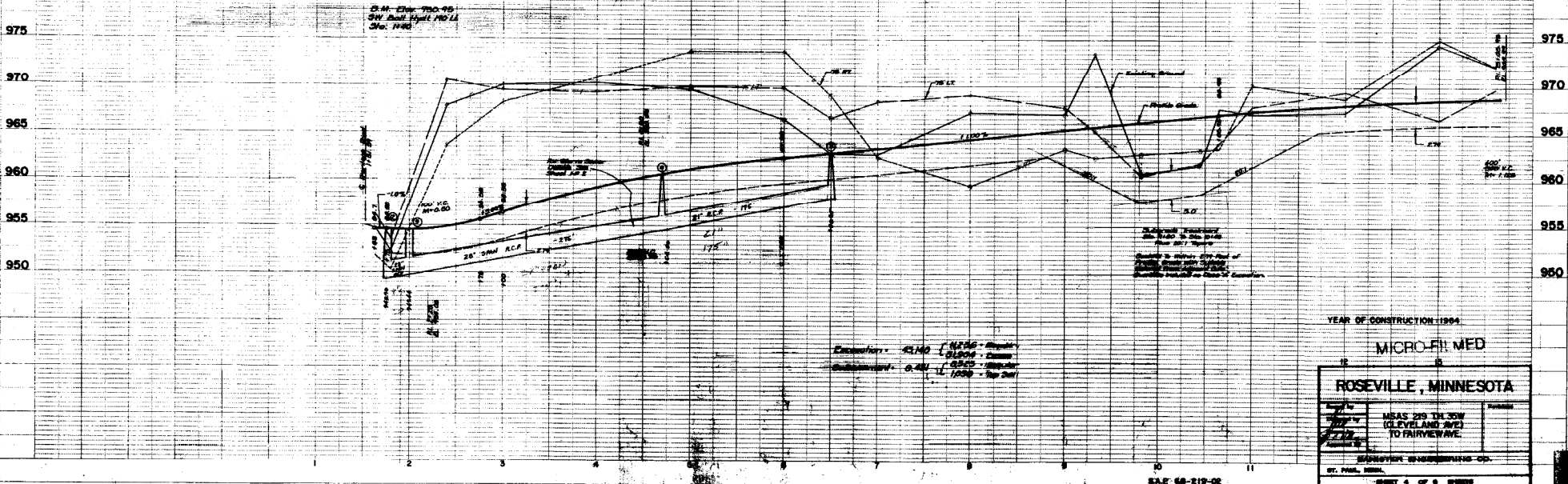
PLAN	DATE	BY
	APPROVED	BY
PROJECT NO.	SHEET NO.	
	TOTAL SHEETS	

PROFILE	DATE	BY
	APPROVED	BY
PROJECT NO.	SHEET NO.	
	TOTAL SHEETS	



**BASIS OF DESIGN**  
 9 TON  
 A-6 SOIL  
 2000 - 6000 A.D.T. PROJECTED TO 1960  
 300 - 600 HEAVY COMMERCIAL A.D.T.

**COUNTY ROAD "B-2"**



Excavation - 42,140 cu yd  
 Subgrade - 0.42 cu yd

YEAR OF CONSTRUCTION 1964

**MICRO-FIL MED**

**ROSEVILLE, MINNESOTA**

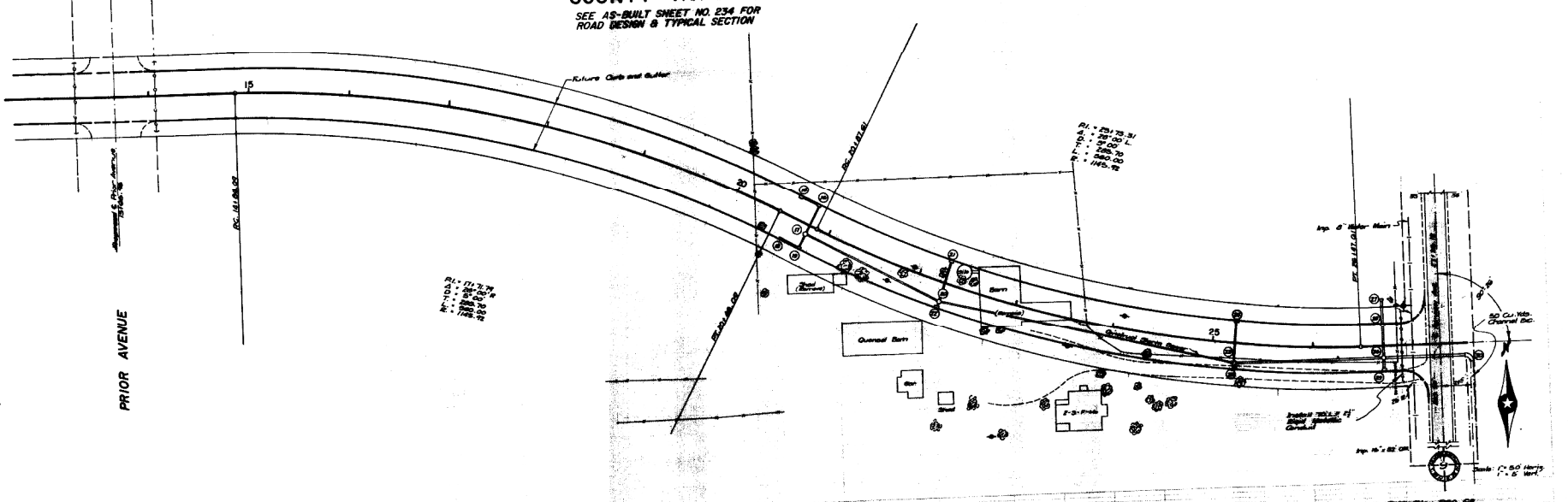
Drawn by	Checked by	Approved by
MEAS 250 THE 30W (LEVEL AND AVE) TO FAIRWAY		

ENGINEERING COMPANY  
 ST. PAUL, MINN.  
 SHEET 4 OF 9 SHEETS

SCALE 60'-2 1/2"=1'  
 CITY PROJ. NO. 64-01

# COUNTY ROAD "B-2"

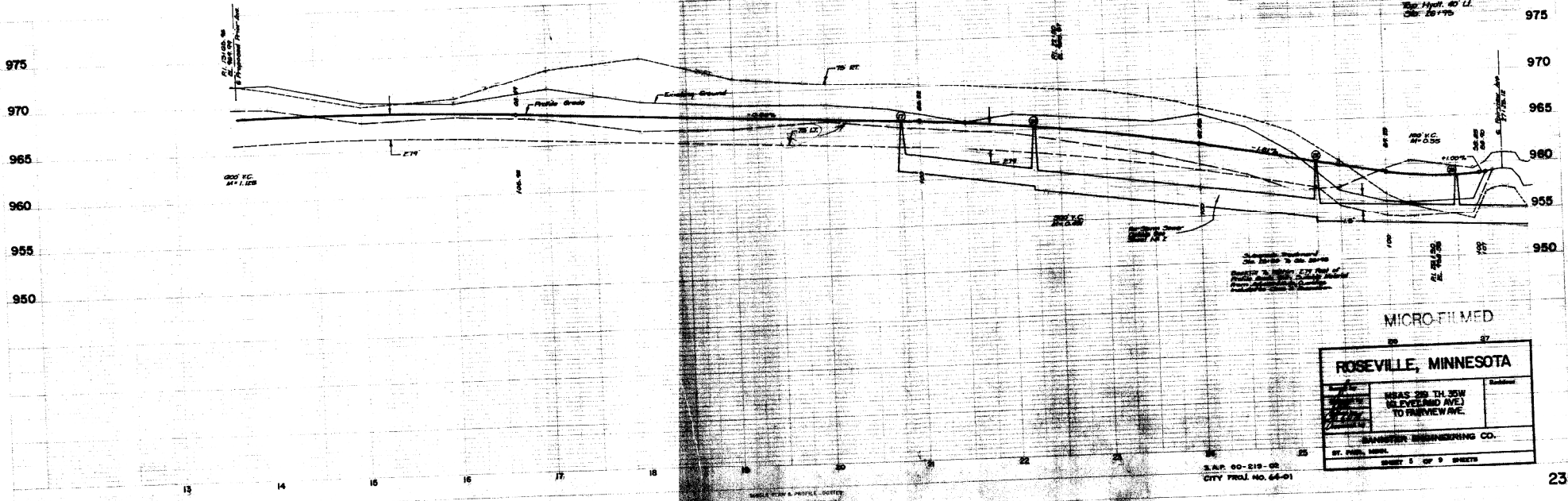
SEE AS-BUILT SHEET NO. 234 FOR ROAD DESIGN & TYPICAL SECTION



PROPOSED  
 1. 10.00  
 2. 10.00  
 3. 10.00  
 4. 10.00  
 5. 10.00

PI = 201.31  
 P1 = 200.00  
 P2 = 199.00  
 P3 = 198.00  
 P4 = 197.00

PRIOR AVENUE



MICRO-FILMED

**ROSEVILLE, MINNESOTA**

NEAR 2ND TH 25W (EVELAND AVE.) TO PINEVIEW AVE.

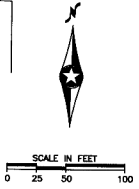
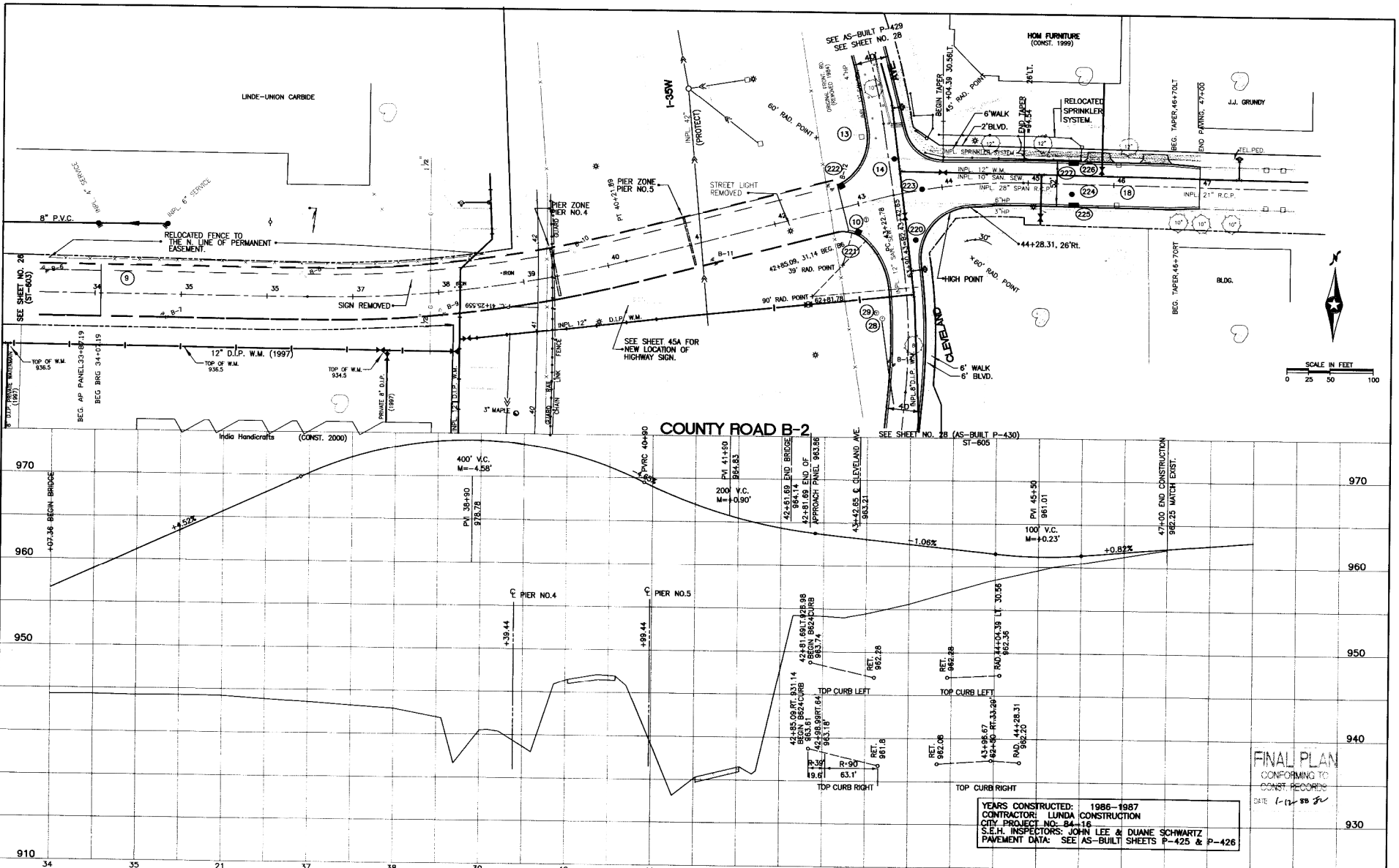
SANDSTEN ENGINEERING CO.  
 ST. PAUL, MINN.

SHEET 5 OF 9 SHEETS

S.A.P. 00-219-02  
 CITY PROJ. NO. 64-01

AUTOCAD FILE

MicroStation/Windows/Autocad/Geo/Projects/Street/1997/428.dwg



**FINAL PLAN**  
CONFORMING TO  
CONST. RECORDS  
DATE 1-22-88 JN

YEARS CONSTRUCTED: 1986-1987  
CONTRACTOR: LUNDA CONSTRUCTION  
CITY PROJECT NO: 84-116  
S.E.H. INSPECTORS: JOHN LEE & DUANE SCHWARTZ  
PAVEMENT DATA: SEE AS-BUILT SHEETS P-425 & P-426

SURVEY	CHECKED BY	NO.	DATE	REVISION
DESIGN		1	9/15/98	WATERMAIN ADDED
DRAWN				

**SEH** SHORT - ELLIOTT - HENDRICKSON, INC.  
Saint Paul, Minnesota • Chippewa Falls, Wisconsin

ROSEVILLE, MINNESOTA  
S.A.P. 180-219-08

STREET CONSTRUCTION & RECONSTRUCTION  
**COUNTY ROAD "B-2"**

FILE NO: 85021  
DATE: 3/19/86