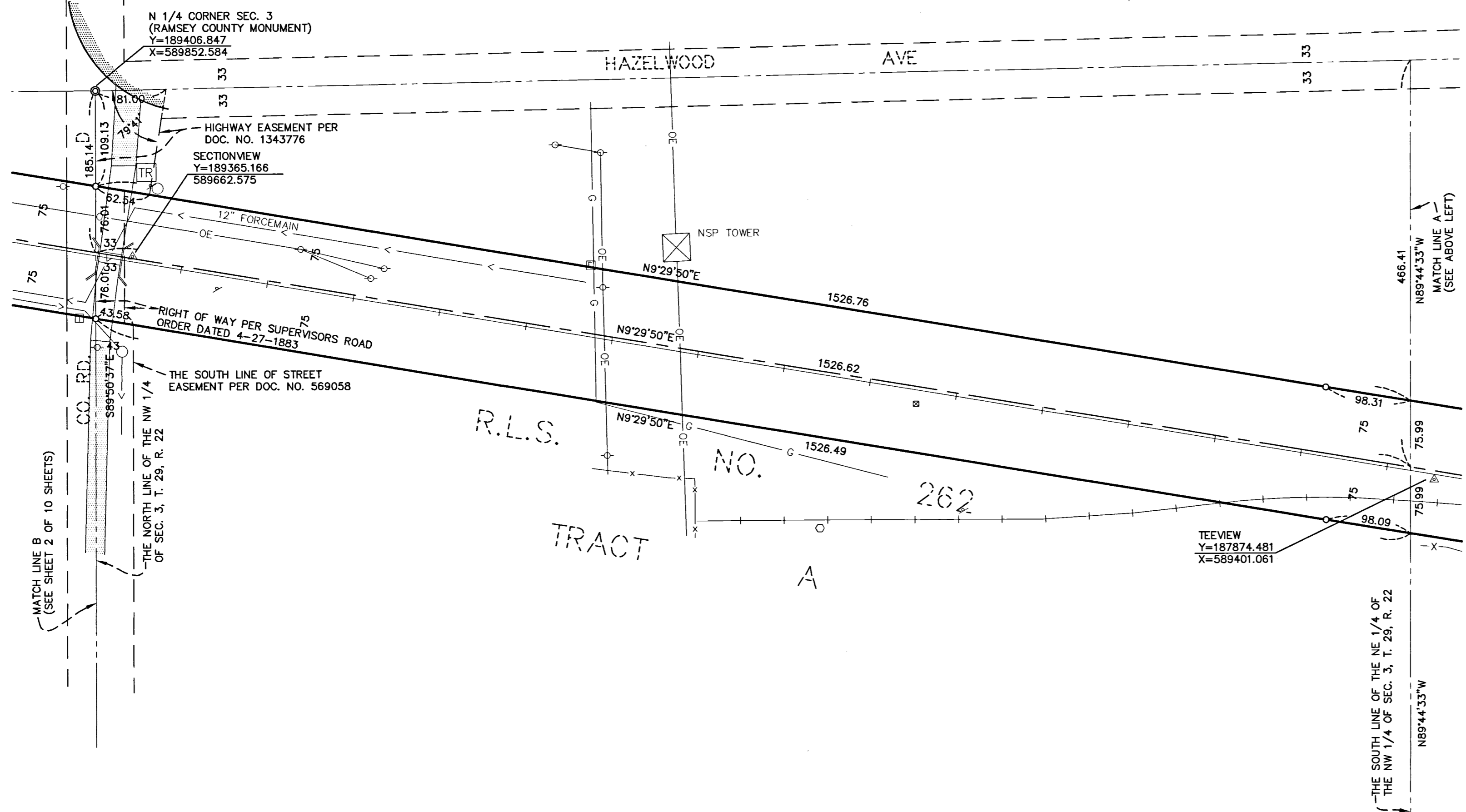
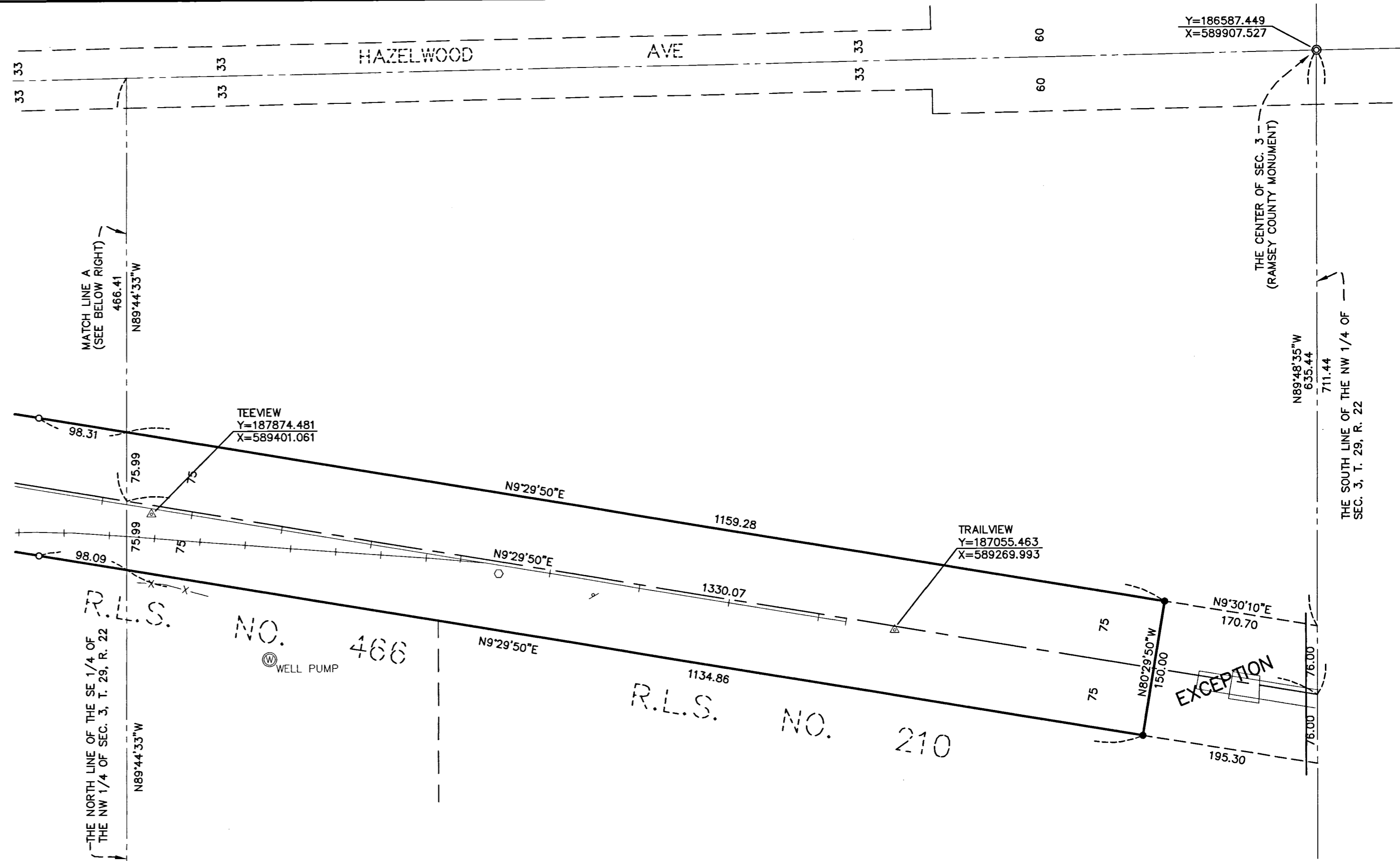


PLAT OF SURVEY

BURLINGTON NORTHERN RAILROAD RIGHT OF WAY

RAMSEY COUNTY, MINNESOTA

SECTION 3, TOWNSHIP 29, RANGE 22



LEGEND

- IRON MONUMENT SET
- 1/2" x 18" IRON PIPE
- CAP # 13637
- IRON MONUMENT FOUND
- ▲ MASONRY NAIL
- ⊙ 1/2" x 18" IRON PIPE SURVEY REFERENCE MONUMENT
- ⊙ RAMSEY COUNTY MONUMENT
- ⊙ MANHOLE
- ⊙ ELECTRIC MANHOLE
- ⊙ CATCH BASIN
- ⊙ HYDRANT
- ⊙ WATER VALVE
- ⊙ LIGHT POLE
- ⊙ POWER POLE
- ⊙ TELEPHONE BOX
- ⊙ TELEVISION BOX
- ⊙ ELECTRIC BOX
- ⊙ TRANSFORMER
- ⊙ GAS VALVE
- ⊙ RAILROAD SWITCH
- ⊙ SIGN
- ⊙ SIGNAL / TRAFFIC LIGHT
- ⊙ SWITCH / SIGNAL BOX
- ⊙ WELL
- ▬ BUILDING WALL
- ▬ BITUMINOUS
- ▬ CONCRETE
- <— SANITARY SEWER
- <— OVERHEAD ELECTRIC
- <— STORM SEWER
- X— FENCE
- RR TRACKS
- G— GAS LINE
- FO— FIBER OPTIC

Scale in feet
0 100 200 300

I hereby certify that this survey was prepared by me or under my supervision and that I am a duly registered land surveyor under Minnesota Statutes Section 326.02 to 326.16

Paul J. [Signature]

Reg. No. 13637 Date: 3-21-02

NOTE: COORDINATE VALUES SHOWN ARE BASED ON THE RAMSEY COUNTY NAD 83 PLANE COORDINATE SYSTEM DEC. 1991 ADJUSTMENT

REVISED: 3-20-02 TO CORRECT LOCATION OF 1/16 LINE

HT Hansen Thorp
PO Pellinen Olson Inc.
Engineers - Surveyors - Landscape Architects