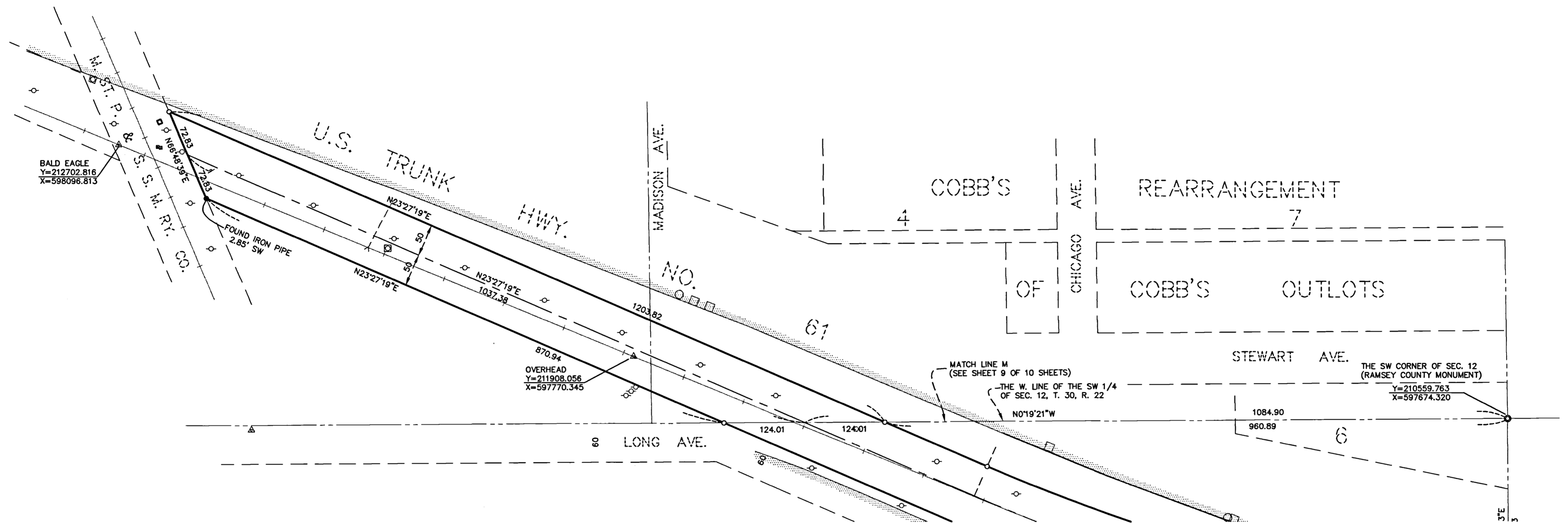


PLAT OF SURVEY

BURLINGTON NORTHERN RAILROAD RIGHT OF WAY

RAMSEY COUNTY, MINNESOTA

SECTION 12, TOWNSHIP 30, RANGE 22



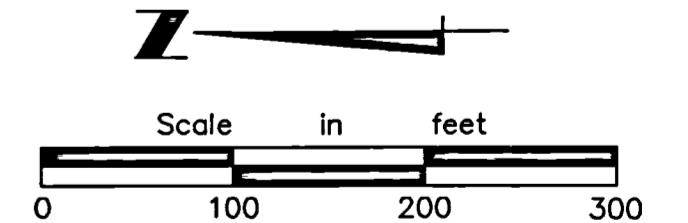
LEGEND

- | | |
|---|--|
| ○ | IRON MONUMENT SET
1/2" x 18" IRON PIPE
CAP # 13637 |
| ● | IRON MONUMENT FOUND |
| △ | MASONRY NAIL |
| ▲ | 1/2" x 18" IRON PIPE SURVEY REFERENCE MONUMENT |
| ⊙ | RAMSEY COUNTY MONUMENT |
| ○ | MANHOLE |
| ⊕ | ELECTRIC MANHOLE |
| ⊖ | CATCH BASIN |
| ⊗ | HYDRANT |
| ⊘ | WATER VALVE |
| ⊙ | LIGHT POLE |
| ⊕ | POWER POLE |
| ⊖ | TELEPHONE BOX |
| ⊗ | TELEVISION BOX |
| ⊘ | ELECTRIC BOX |
| ⊙ | TRANSFORMER |
| ⊕ | GAS VALVE |
| ⊖ | RAILROAD SWITCH |
| ⊗ | SIGNAL / TRAFFIC LIGHT |
| ⊘ | SWITCH / SIGNAL BOX |
| ⊙ | WELL |
- | | |
|-------|-------------------|
| | BUILDING WALL |
| | BITUMINOUS |
| | CONCRETE |
| — < | SANITARY SEWER |
| — OE | OVERHEAD ELECTRIC |
| — << | STORM SEWER |
| -X-X- | FENCE |
| + + + | RR TRACKS |
| - G | GAS LINE |
| - FO | FIBER OPTIC |

NOTE: COORDINATE VALUES SHOWN ARE BASED ON THE RAMSEY COUNTY NAD 83 PLANE COORDINATE SYSTEM DEC. 1991 ADJUSTMENT

I hereby certify that this survey was prepared by me or under my supervision and that I am a duly registered land surveyor under Minnesota Statutes Section 326.02 to 326.16

[Signature]
Reg. No. 13637 Date: 3-21-98



HT Hansen Thorp
Pellinen Olson Inc.
Engineers • Surveyors • Landscape Architects