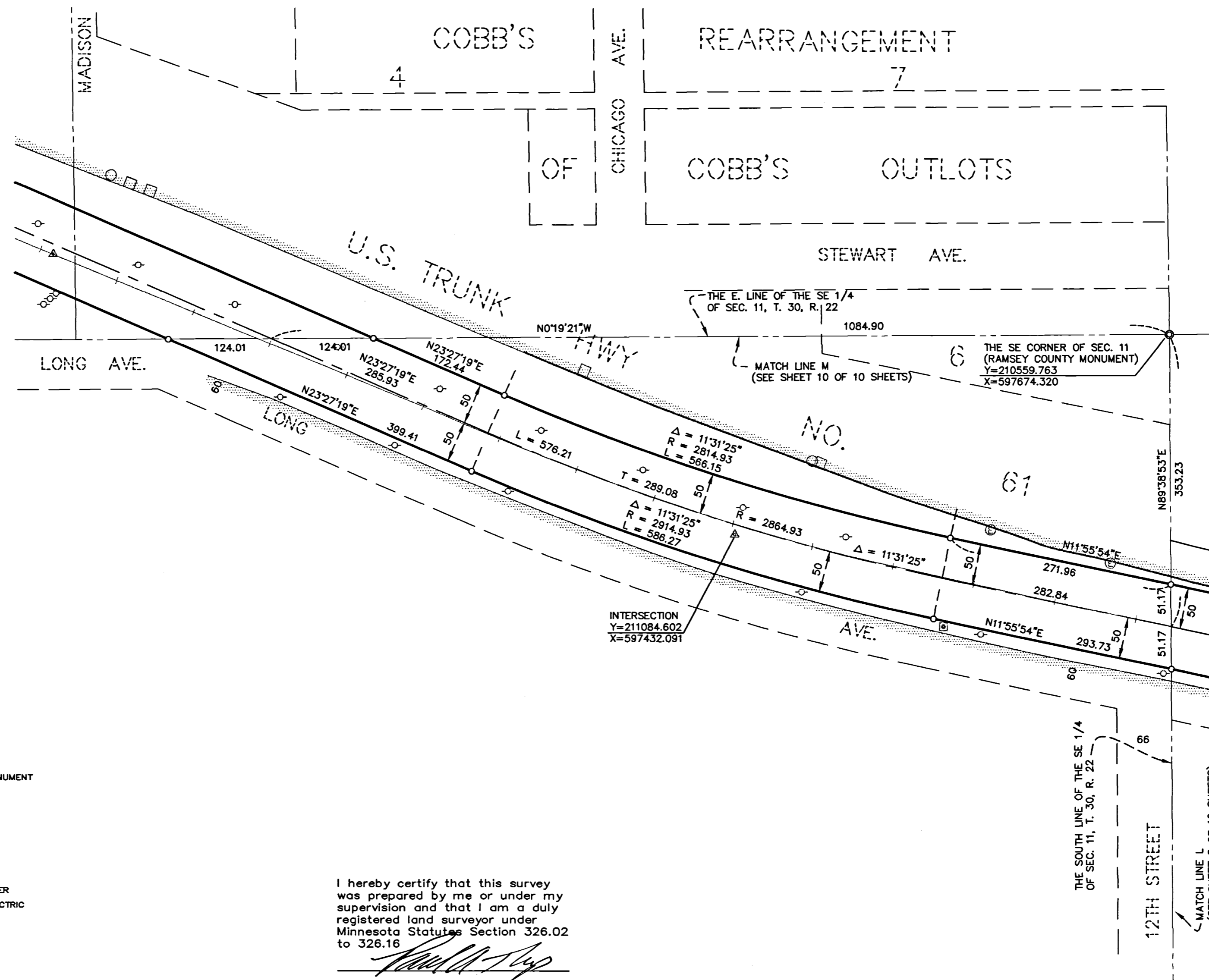


PLAT OF SURVEY

BURLINGTON NORTHERN RAILROAD RIGHT OF WAY RAMSEY COUNTY, MINNESOTA SECTION 11, TOWNSHIP 30, RANGE 22



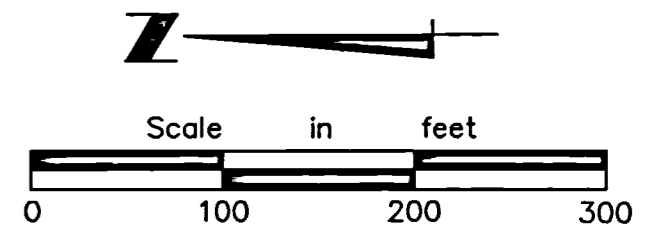
LEGEND

- IRON MONUMENT SET
1/2" x 18" IRON PIPE
CAP # 13637
 - IRON MONUMENT FOUND
 - △ MASONRY NAIL
 - ▲ 1/2" x 18" IRON PIPE SURVEY REFERENCE MONUMENT
 - ⊙ RAMSEY COUNTY MONUMENT
 - MANHOLE
 - ELECTRIC MANHOLE
 - CATCH BASIN
 - HYDRANT
 - WATER VALVE
 - LIGHT POLE
 - POWER POLE
 - TELEPHONE BOX
 - TELEVISION BOX
 - ELECTRIC BOX
 - TRANSFORMER
 - GAS VALVE
 - RAILROAD SWITCH
 - SIGN
 - SIGNAL / TRAFFIC LIGHT
 - SWITCH / SIGNAL BOX
 - WELL
- ▨ BUILDING WALL
 - ▨ BITUMINOUS
 - ▨ CONCRETE
 - <— SANITARY SEWER
 - OE— OVERHEAD ELECTRIC
 - <<— STORM SEWER
 - X-X- FENCE
 - +— RRR TRACKS
 - G— GAS LINE
 - FO— FIBER OPTIC

I hereby certify that this survey was prepared by me or under my supervision and that I am a duly registered land surveyor under Minnesota Statutes Section 326.02 to 326.16.

Reg. No. 13631 Date: 3-27-99

NOTE: COORDINATE VALUES SHOWN ARE BASED ON THE RAMSEY COUNTY NAD 83 PLANE COORDINATE SYSTEM DEC. 1991 ADJUSTMENT



HT Hansen Thorp
Pellinen Olson Inc.
Engineers • Surveyors • Landscape Architects