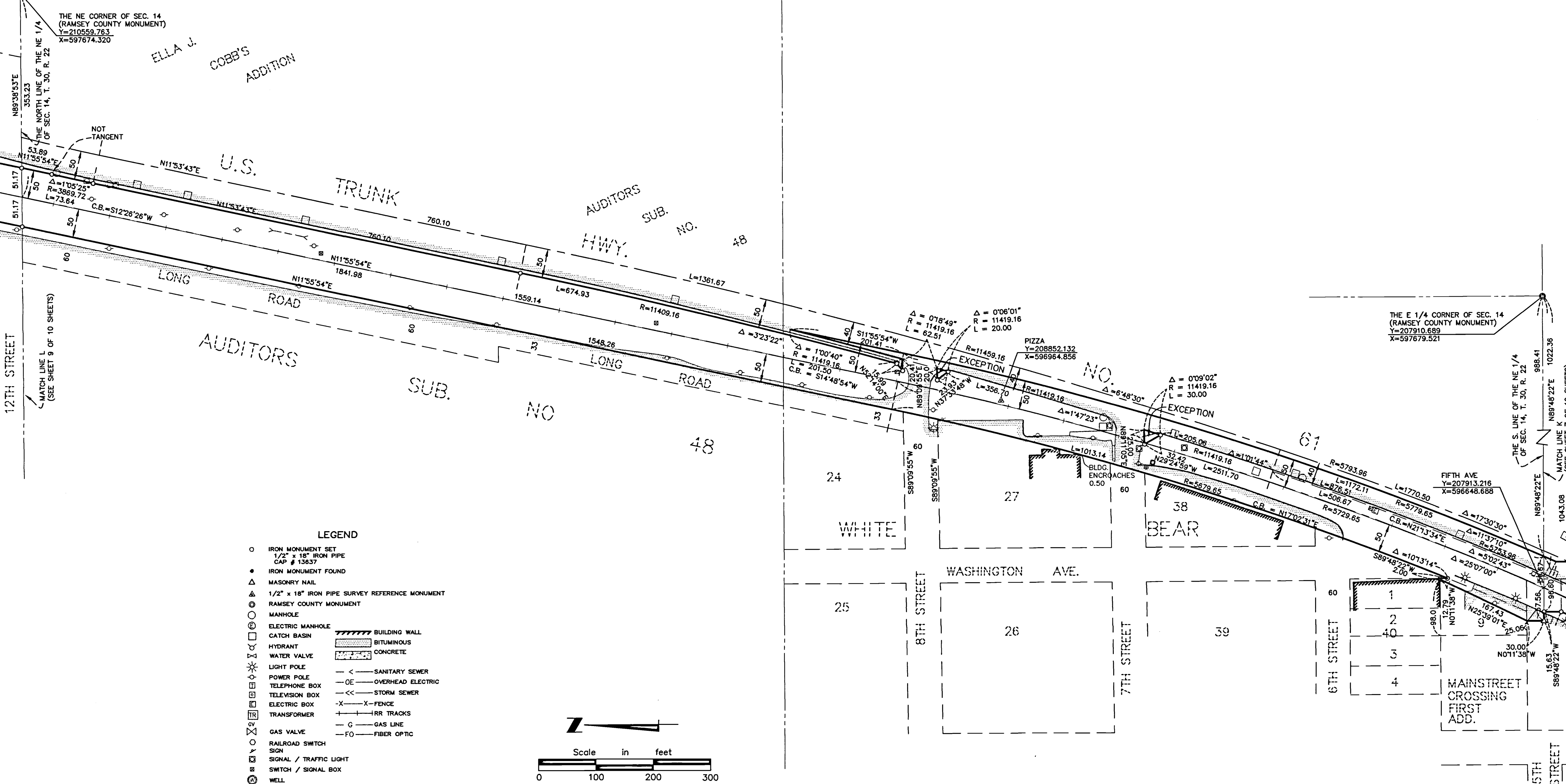


# PLAT OF SURVEY

## BURLINGTON NORTHERN RAILROAD RIGHT OF WAY

### RAMSEY COUNTY, MINNESOTA

### SECTION 14, TOWNSHIP 30, RANGE 22



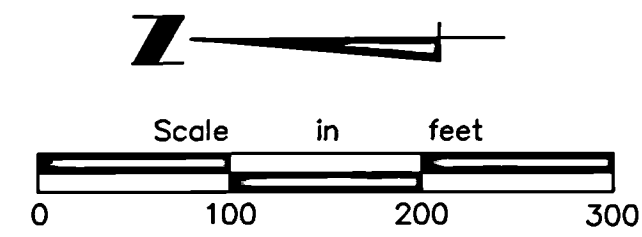
THE NE CORNER OF SEC. 14  
(RAMSEY COUNTY MONUMENT)  
Y=210559.763  
X=597674.320

THE E 1/4 CORNER OF SEC. 14  
(RAMSEY COUNTY MONUMENT)  
Y=207910.689  
X=597679.521

12TH STREET  
MATCH LINE L  
(SEE SHEET 9 OF 10 SHEETS)

THE S. LINE OF THE NE 1/4  
OF SEC. 14, T. 30, R. 22  
MATCH LINE K  
(SEE SHEET 7 OF 10 SHEETS)

- LEGEND**
- IRON MONUMENT SET  
1/2" x 18" IRON PIPE  
CAP # 13637
  - IRON MONUMENT FOUND
  - △ MASONRY NAIL
  - ▲ 1/2" x 18" IRON PIPE SURVEY REFERENCE MONUMENT
  - ◻ RAMSEY COUNTY MONUMENT
  - MANHOLE
  - ⊗ ELECTRIC MANHOLE
  - ⊕ CATCH BASIN
  - ⊖ HYDRANT
  - ⊙ WATER VALVE
  - ⊛ LIGHT POLE
  - ⊚ POWER POLE
  - ⊞ TELEPHONE BOX
  - ⊟ TELEVISION BOX
  - ⊠ ELECTRIC BOX
  - ⊡ TRANSFORMER
  - ⊣ GAS VALVE
  - ⊤ RAILROAD SWITCH
  - ⊥ SIGN
  - ⊦ SIGNAL / TRAFFIC LIGHT
  - ⊧ SWITCH / SIGNAL BOX
  - ⊨ WELL
  - ▨ BUILDING WALL
  - ▩ BITUMINOUS
  - ▧ CONCRETE
  - < — SANITARY SEWER
  - O — OVERHEAD ELECTRIC
  - << — STORM SEWER
  - X- FENCE
  - +— IRR TRACKS
  - G- GAS LINE
  - FO- FIBER OPTIC



NOTE: COORDINATE VALUES SHOWN ARE BASED ON THE  
RAMSEY COUNTY NAD 83 PLANE COORDINATE SYSTEM  
DEC. 1991 ADJUSTMENT

I hereby certify that this survey  
was prepared by me or under my  
supervision and that I am a duly  
registered land surveyor under  
Minnesota Statutes Section 326.02  
to 326.16

*Handwritten Signature*

Reg. No. 13637 Date: 3-27-98

**HT** Hansen Thorp  
**PO** Pellinen Olson Inc.  
Engineers • Surveyors • Landscape Architects