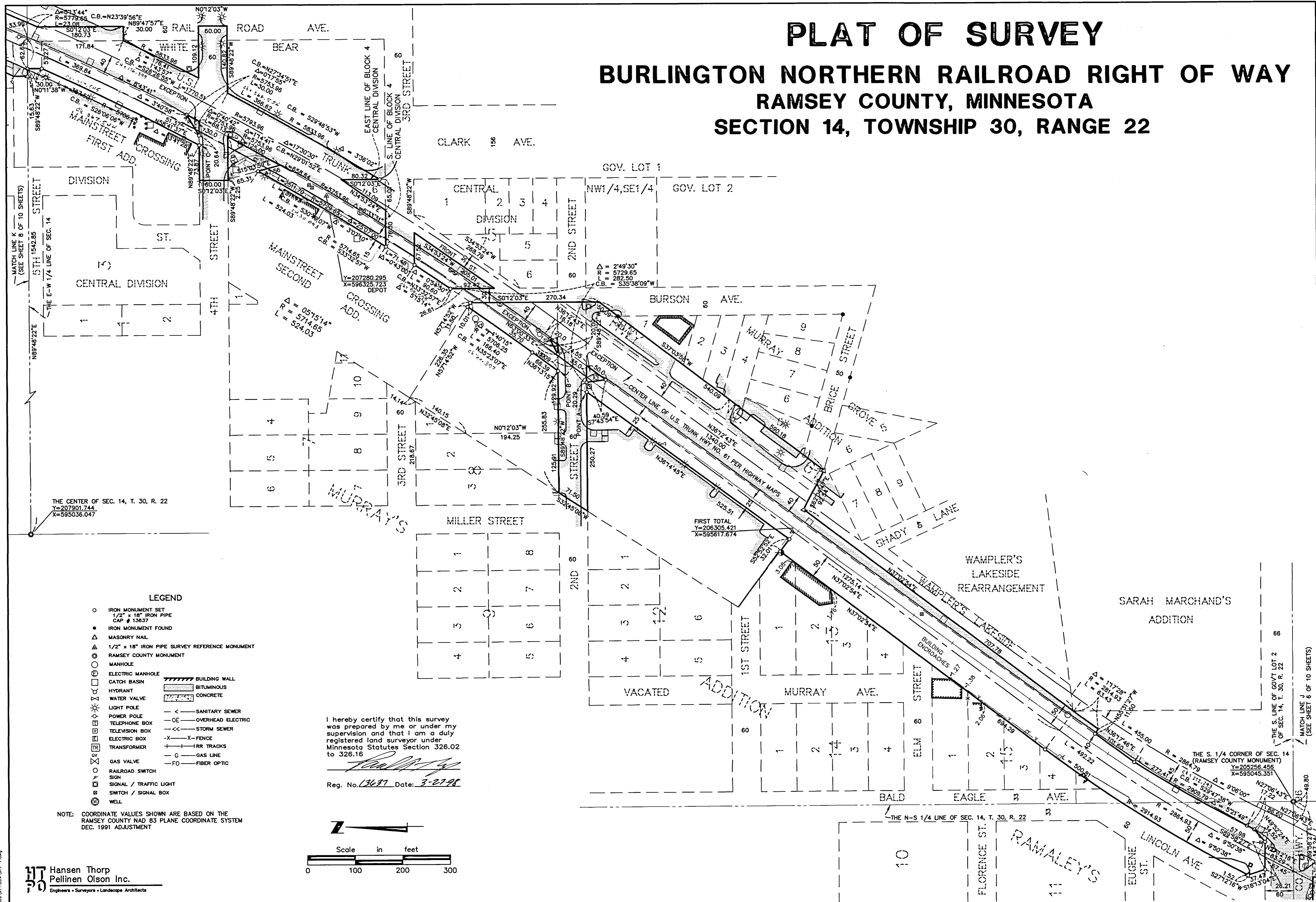


PLAT OF SURVEY

BURLINGTON NORTHERN RAILROAD RIGHT OF WAY

RAMSEY COUNTY, MINNESOTA

SECTION 14, TOWNSHIP 30, RANGE 22



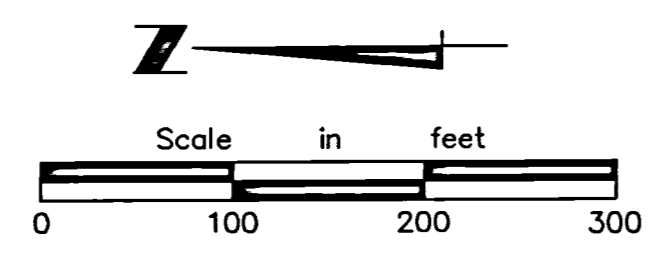
THE CENTER OF SEC. 14, T. 30, R. 22
 Y=207901.744
 X=595036.047

FIRST TOTAL
 Y=206305.421
 X=595617.874

- LEGEND**
- IRON MONUMENT SET
 - 1/2" x 18" IRON PIPE CAP # 13637
 - IRON MONUMENT FOUND
 - ▲ MASONRY NAIL
 - ▲ 1/2" x 18" IRON PIPE SURVEY REFERENCE MONUMENT
 - RAMSEY COUNTY MONUMENT
 - MANHOLE
 - ELECTRIC MANHOLE
 - CATCH BASIN
 - HYDRANT
 - WATER VALVE
 - LIGHT POLE
 - POWER POLE
 - TELEPHONE BOX
 - TELEVISION BOX
 - ELECTRIC BOX
 - TRANSFORMER
 - GAS VALVE
 - RAILROAD SWITCH SIGN
 - SIGNAL / TRAFFIC LIGHT
 - SWITCH / SIGNAL BOX
 - WELL
 - ▨ BUILDING WALL
 - ▨ BITUMINOUS
 - ▨ CONCRETE
 - SANITARY SEWER
 - OVERHEAD ELECTRIC
 - STORM SEWER
 - X-FENCE
 - IRR TRACKS
 - GAS LINE
 - FIBER OPTIC

I hereby certify that this survey was prepared by me or under my supervision and that I am a duly registered land surveyor under Minnesota Statutes Section 326.02 to 326.16

[Signature]
 Reg. No. 13637 Date: 3-27-98



NOTE: COORDINATE VALUES SHOWN ARE BASED ON THE RAMSEY COUNTY NAD 83 PLANE COORDINATE SYSTEM DEC. 1991 ADJUSTMENT

HT Hansen Thorp
PO Pellinen Olson Inc.
 Engineers • Surveyors • Landscape Architects