

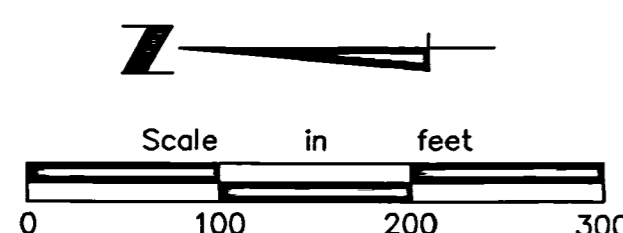
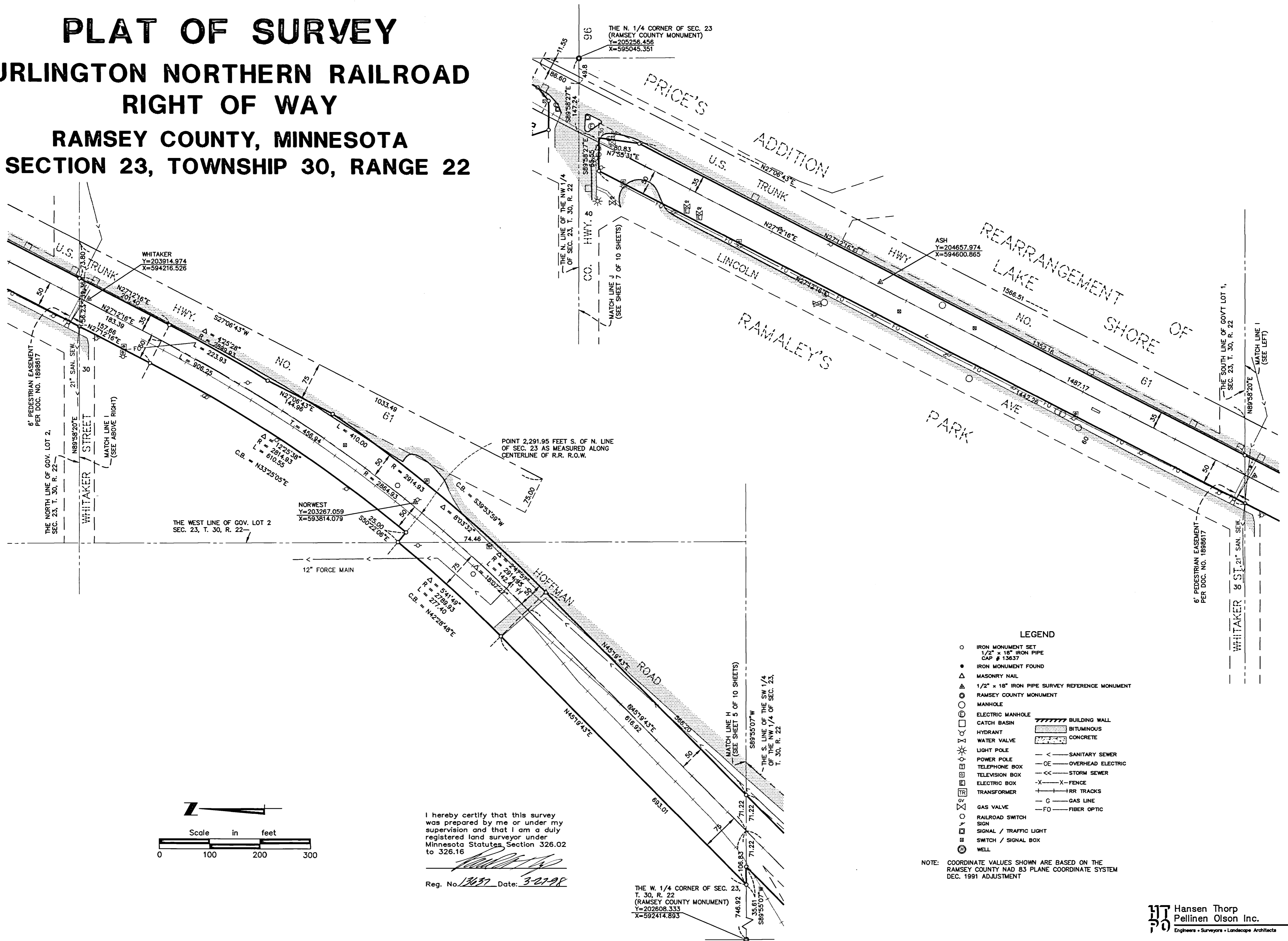
PLAT OF SURVEY

BURLINGTON NORTHERN RAILROAD

RIGHT OF WAY

RAMSEY COUNTY, MINNESOTA

SECTION 23, TOWNSHIP 30, RANGE 22



I hereby certify that this survey was prepared by me or under my supervision and that I am a duly registered land surveyor under Minnesota Statutes, Section 326.02 to 326.16

[Signature]

Reg. No. 13637 Date: 3-27-98

THE W. 1/4 CORNER OF SEC. 23, T. 30, R. 22 (RAMSEY COUNTY MONUMENT)
 Y=202608.333
 X=592414.893

- #### LEGEND
- IRON MONUMENT SET
 - 1/2" x 18" IRON PIPE CAP # 13637
 - IRON MONUMENT FOUND
 - △ MASONRY NAIL
 - ▲ 1/2" x 18" IRON PIPE SURVEY REFERENCE MONUMENT
 - RAMSEY COUNTY MONUMENT
 - MANHOLE
 - ELECTRIC MANHOLE
 - CATCH BASIN
 - HYDRANT
 - WATER VALVE
 - LIGHT POLE
 - POWER POLE
 - TELEPHONE BOX
 - TELEVISION BOX
 - ELECTRIC BOX
 - TRANSFORMER
 - GAS VALVE
 - RAILROAD SWITCH
 - SIGN
 - SIGNAL / TRAFFIC LIGHT
 - SWITCH / SIGNAL BOX
 - WELL
 - ▨ BUILDING WALL
 - ▨ BITUMINOUS
 - ▨ CONCRETE
 - < — SANITARY SEWER
 - OE — OVERHEAD ELECTRIC
 - << — STORM SEWER
 - X — FENCE
 - + — R.R. TRACKS
 - G — GAS LINE
 - FO — FIBER OPTIC

NOTE: COORDINATE VALUES SHOWN ARE BASED ON THE RAMSEY COUNTY NAD 83 PLANE COORDINATE SYSTEM DEC. 1991 ADJUSTMENT

HT Hansen Thorp
 Pellinen Olson Inc.
 Engineers • Surveyors • Landscape Architects