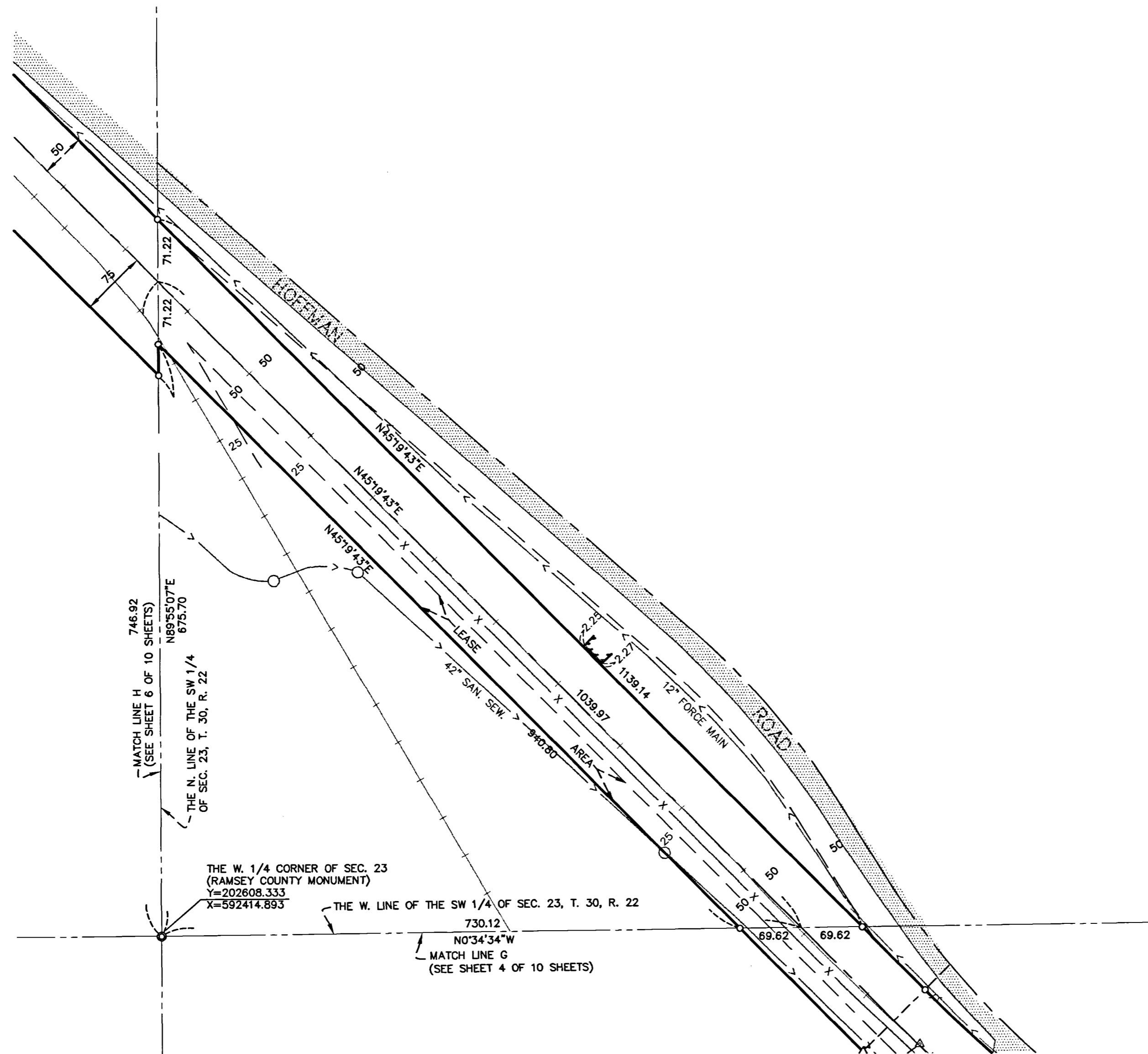


PLAT OF SURVEY

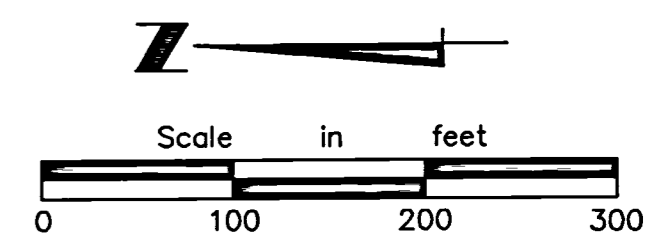
BURLINGTON NORTHERN RAILROAD RIGHT OF WAY

RAMSEY COUNTY, MINNESOTA

SECTION 23, TOWNSHIP 30, RANGE 22



- LEGEND**
- IRON MONUMENT SET
1/2" x 18" IRON PIPE
CAP # 13637
 - IRON MONUMENT FOUND
 - △ MASONRY NAIL
 - ▲ 1/2" x 18" IRON PIPE SURVEY REFERENCE MONUMENT
 - ⊙ RAMSEY COUNTY MONUMENT
 - MANHOLE
 - ⊕ ELECTRIC MANHOLE
 - CATCH BASIN
 - ⊕ HYDRANT
 - ⊕ WATER VALVE
 - ⊕ LIGHT POLE
 - ⊕ POWER POLE
 - ⊕ TELEPHONE BOX
 - ⊕ TELEVISION BOX
 - ⊕ ELECTRIC BOX
 - ⊕ TRANSFORMER
 - ⊕ GAS VALVE
 - ⊕ RAILROAD SWITCH
 - ⊕ SIGN
 - ⊕ SIGNAL / TRAFFIC LIGHT
 - ⊕ SWITCH / SIGNAL BOX
 - ⊕ WELL
 - ▨ BUILDING WALL
 - ▨ BITUMINOUS
 - ▨ CONCRETE
 - < — SANITARY SEWER
 - OE — OVERHEAD ELECTRIC
 - << — STORM SEWER
 - X-X- FENCE
 - + + + RRR TRACKS
 - G — GAS LINE
 - FO — FIBER OPTIC
- NOTE: COORDINATE VALUES SHOWN ARE BASED ON THE RAMSEY COUNTY NAD 83 PLANE COORDINATE SYSTEM DEC. 1991 ADJUSTMENT



I hereby certify that this survey was prepared by me or under my supervision and that I am a duly registered land surveyor under Minnesota Statutes Section 326.02 to 326.16

[Signature]

Reg. No. 13637 Date: 3-27-98

**Hansen Thorp
Pellinen Olson Inc.**
Engineers • Surveyors • Landscape Architects