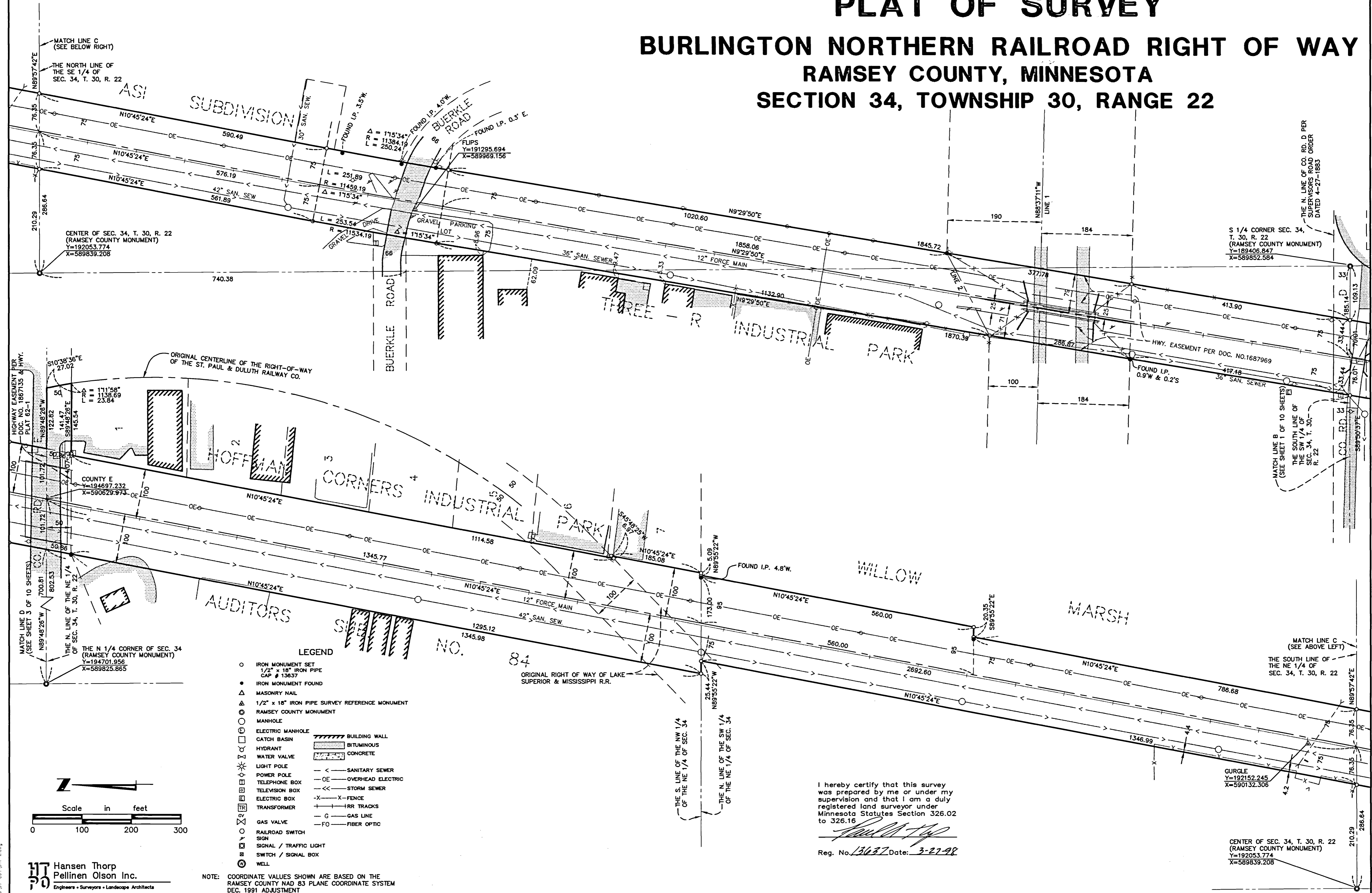


# PLAT OF SURVEY

## BURLINGTON NORTHERN RAILROAD RIGHT OF WAY

### RAMSEY COUNTY, MINNESOTA

### SECTION 34, TOWNSHIP 30, RANGE 22



- LEGEND**
- IRON MONUMENT SET
  - IRON MONUMENT FOUND
  - △ MASONRY NAIL
  - ⊙ 1/2" x 18" IRON PIPE SURVEY REFERENCE MONUMENT
  - ⊙ RAMSEY COUNTY MONUMENT
  - ⊙ MANHOLE
  - ⊙ ELECTRIC MANHOLE
  - ⊙ CATCH BASIN
  - ⊙ HYDRANT
  - ⊙ WATER VALVE
  - ⊙ LIGHT POLE
  - ⊙ POWER POLE
  - ⊙ TELEPHONE BOX
  - ⊙ TELEVISION BOX
  - ⊙ ELECTRIC BOX
  - ⊙ TRANSFORMER
  - ⊙ GAS VALVE
  - ⊙ RAILROAD SWITCH
  - ⊙ SIGNAL / TRAFFIC LIGHT
  - ⊙ SWITCH / SIGNAL BOX
  - ⊙ WELL
- ▨ BUILDING WALL
  - ▨ BITUMINOUS
  - ▨ CONCRETE
  - SANITARY SEWER
  - OVERHEAD ELECTRIC
  - STORM SEWER
  - FENCE
  - RR TRACKS
  - GAS LINE
  - FIBER OPTIC

NOTE: COORDINATE VALUES SHOWN ARE BASED ON THE RAMSEY COUNTY NAD 83 PLANE COORDINATE SYSTEM DEC. 1991 ADJUSTMENT

I hereby certify that this survey was prepared by me or under my supervision and that I am a duly registered land surveyor under Minnesota Statutes Section 326.02 to 326.16

*[Signature]*

Reg. No. 13637 Date: 3-27-98

**Hansen Thorp**  
**Pellinen Olson Inc.**  
 Engineers • Surveyors • Landscape Architects

CENTER OF SEC. 34, T. 30, R. 22  
 (RAMSEY COUNTY MONUMENT)  
 Y=192053.774  
 X=589839.208