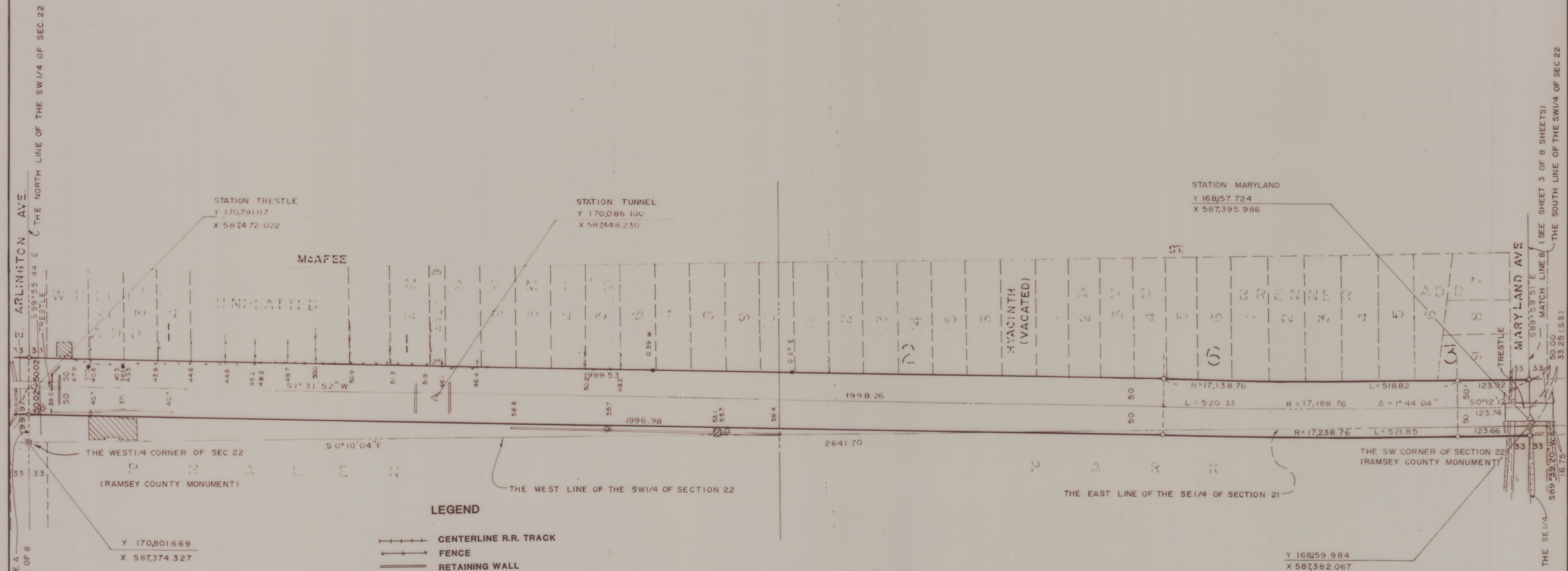


PLAT OF SURVEY

BURLINGTON NORTHERN RAILROAD RIGHT OF WAY

CITY OF ST. PAUL, MINNESOTA



- LEGEND**
- CENTERLINE R.R. TRACK
 - FENCE
 - RETAINING WALL
 - CONCRETE CURB
 - BITUMINOUS SURFACE
 - CONCRETE SLAB
 - BUILDING
 - IRON MONUMENT FOUND
 - IRON MONUMENT PLACED
(1/2" x 18" IRON PIPE WITH PLASTIC CAP MARKED #18421)
 - 3/8" x 18" ROD WITH PLASTIC CAP
 - PP POWER POLE
 - TP TELEPHONE POLE
 - STREET LIGHT
 - MANHOLE
 - CB CATCH BASIN
 - HYD HYDRANT
 - SS DENOTES DISTANCE PER SAINT PAUL STANDARD SURVEY



I hereby certify that this survey was prepared by me or under my supervision and that I am a duly registered land surveyor under Minnesota Statutes Section 326.02 to 326.16.

Paul C. Thorp Reg. No. 13637
 Date: 7-24-71

NOTE: COORDINATE VALUES SHOWN ARE BASED ON THE RAMSEY COUNTY PLANE COORDINATE SYSTEM, MARCH 1991 ADJUSTMENT.

Hansen Thorp Pellinen Olson Inc.
 Civil Engineers
 Land Surveyors
 Landscape Architects

THE SOUTH LINE OF THE SW 1/4 OF SECTION 22 (SEE SHEET 3 OF 8 SHEETS)

1991-002