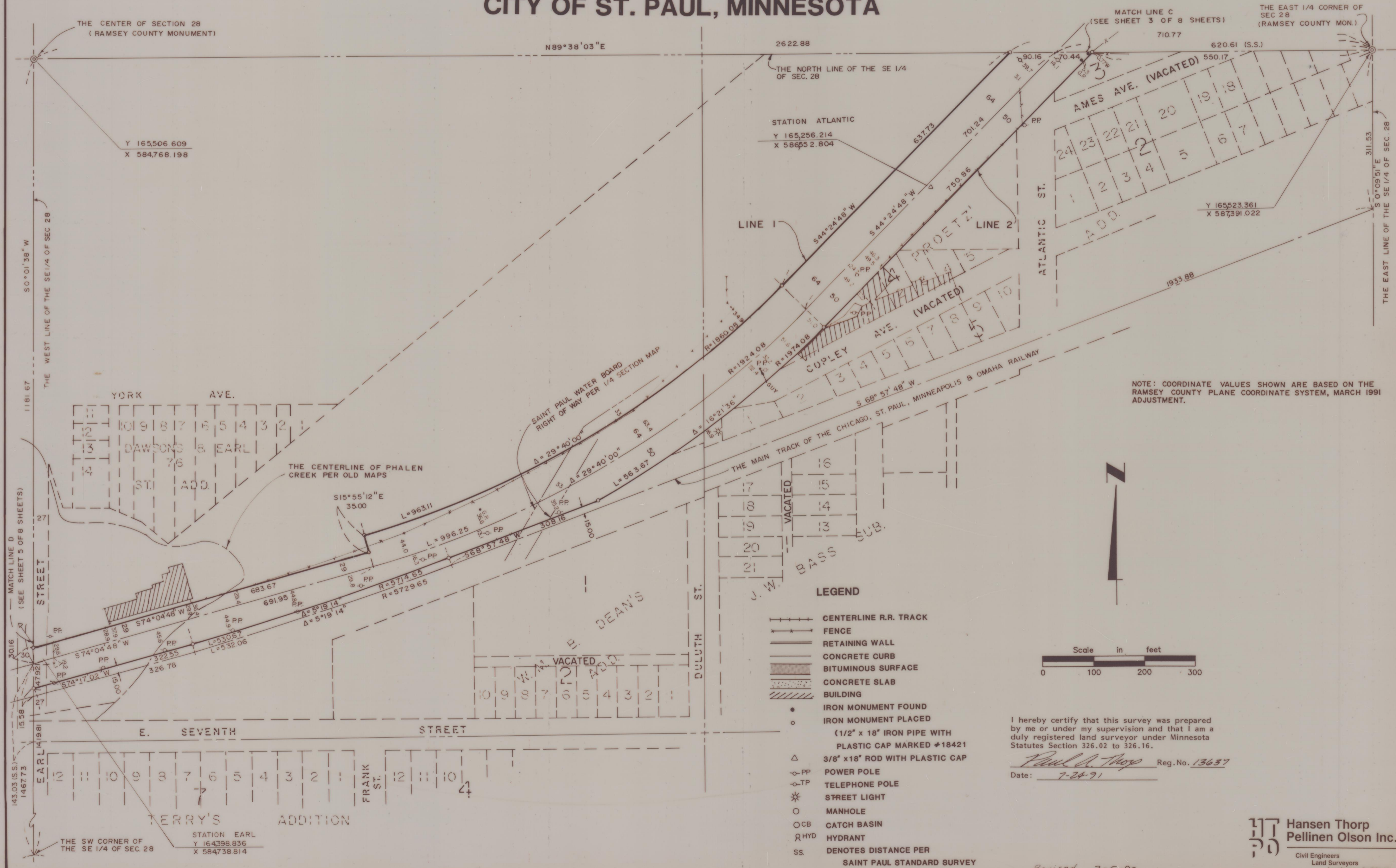


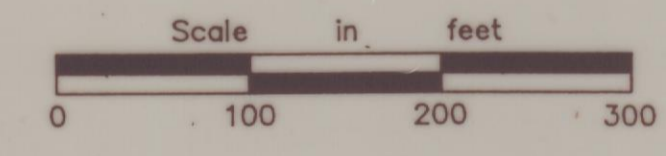
PLAT OF SURVEY

BURLINGTON NORTHERN RAILROAD RIGHT OF WAY

CITY OF ST. PAUL, MINNESOTA



NOTE: COORDINATE VALUES SHOWN ARE BASED ON THE RAMSEY COUNTY PLANE COORDINATE SYSTEM, MARCH 1991 ADJUSTMENT.



- LEGEND**
- CENTERLINE R.R. TRACK
 - FENCE
 - RETAINING WALL
 - CONCRETE CURB
 - BITUMINOUS SURFACE
 - CONCRETE SLAB
 - BUILDING
 - IRON MONUMENT FOUND
 - IRON MONUMENT PLACED
(1/2" x 18" IRON PIPE WITH PLASTIC CAP MARKED #18421)
 - 3/8" x 18" ROD WITH PLASTIC CAP
 - POWER POLE
 - TELEPHONE POLE
 - STREET LIGHT
 - MANHOLE
 - CATCH BASIN
 - HYDRANT
 - DENOTES DISTANCE PER SAINT PAUL STANDARD SURVEY

I hereby certify that this survey was prepared by me or under my supervision and that I am a duly registered land surveyor under Minnesota Statutes Section 326.02 to 326.16.

Paul A. Thorp Reg. No. 13637
Date: 7-24-91

**Hansen Thorp
Pellinen Olson Inc.**
Civil Engineers
Land Surveyors
Landscape Architects

Revised 3-5-92