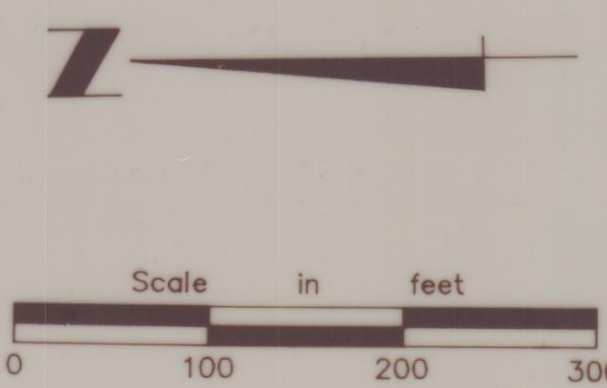
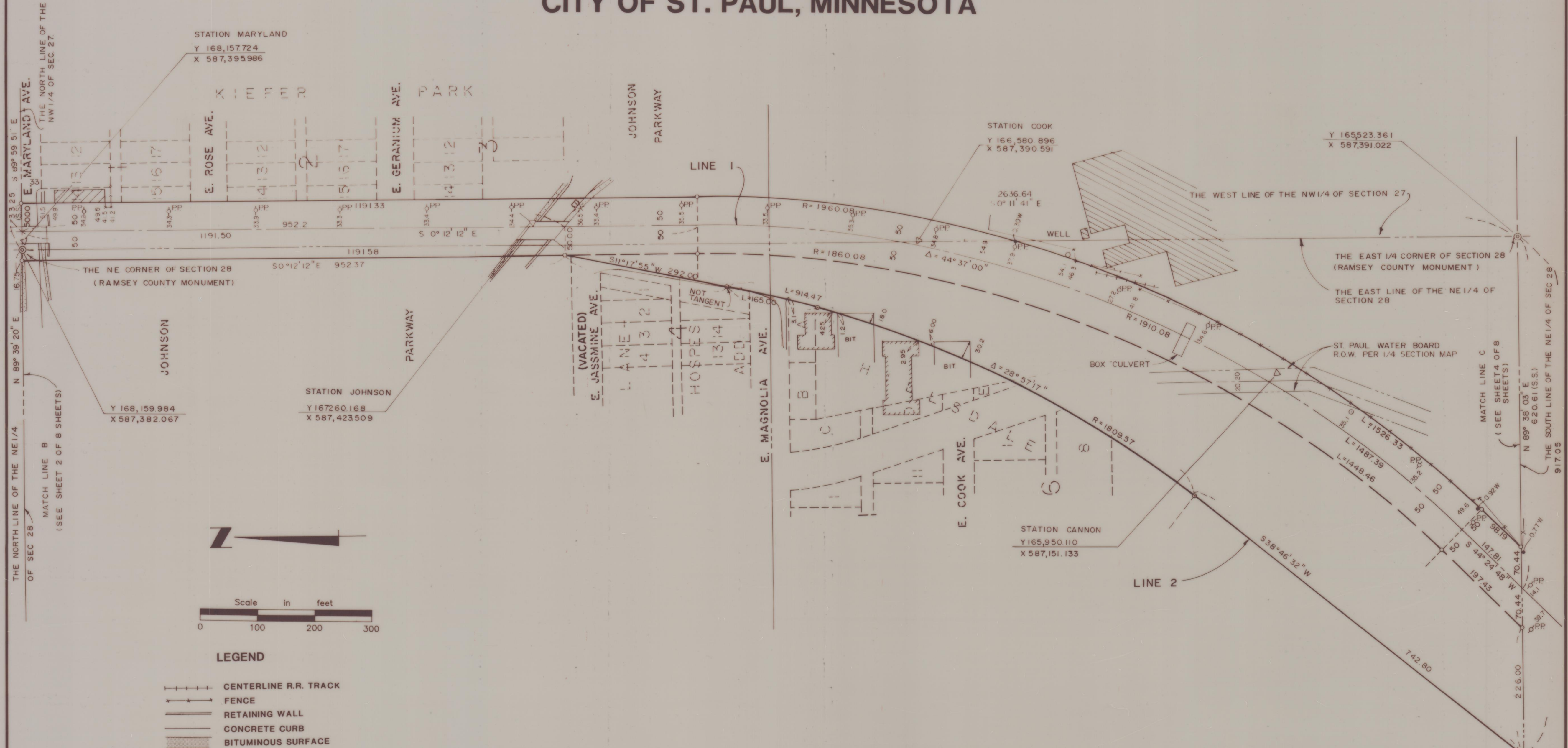


PLAT OF SURVEY

BURLINGTON NORTHERN RAILROAD RIGHT OF WAY

CITY OF ST. PAUL, MINNESOTA



LEGEND

- CENTERLINE R.R. TRACK
- FENCE
- RETAINING WALL
- CONCRETE CURB
- BITUMINOUS SURFACE
- CONCRETE SLAB
- BUILDING
- IRON MONUMENT FOUND
- IRON MONUMENT PLACED
(1/2" x 18" IRON PIPE WITH PLASTIC CAP MARKED #18421)
- 3/8" x 18" ROD WITH PLASTIC CAP
- POWER POLE
- TELEPHONE POLE
- STREET LIGHT
- MANHOLE
- CATCH BASIN
- HYDRANT
- DENOTES DISTANCE PER SAINT PAUL STANDARD SURVEY

I hereby certify that this survey was prepared by me or under my supervision and that I am a duly registered land surveyor under Minnesota Statutes Section 326.02 to 326.16.

Paul H. Thorp Reg. No. 13637

Date: 7-24-91

NOTE: COORDINATE VALUES SHOWN ARE BASED ON THE RAMSEY COUNTY PLANE COORDINATE SYSTEM, MARCH 1991 ADJUSTMENT.

**Hansen Thorp
Pellinen Olson Inc.**
Civil Engineers
Land Surveyors
Landscape Architects