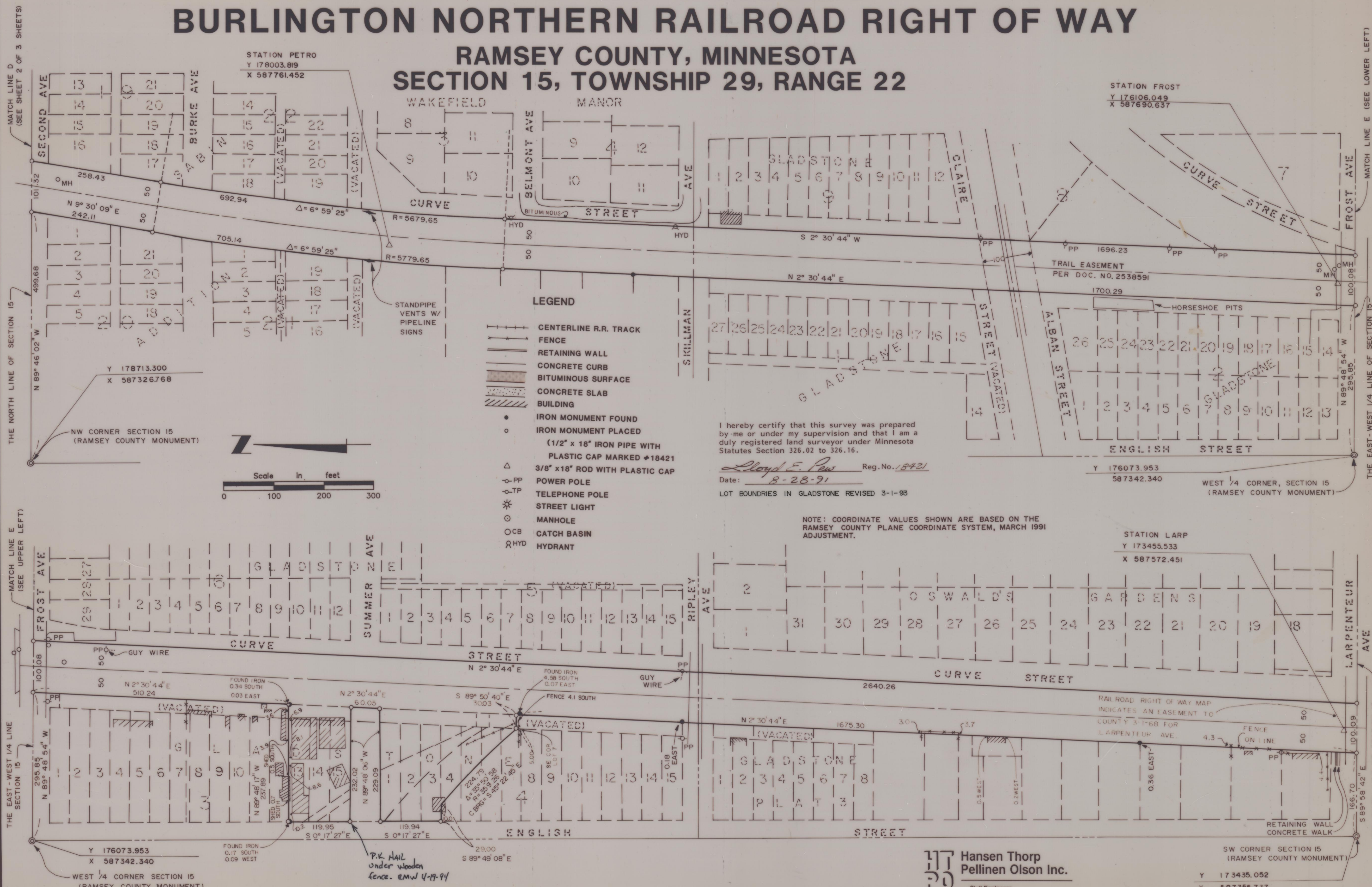


PLAT OF SURVEY

BURLINGTON NORTHERN RAILROAD RIGHT OF WAY

RAMSEY COUNTY, MINNESOTA
SECTION 15, TOWNSHIP 29, RANGE 22



STATION PETRO
 Y 178003.819
 X 587761.452

STATION FROST
 Y 176106.049
 X 587690.637

Y 178713.300
 X 587326.768

Y 176073.953
 X 587342.340

WEST 1/4 CORNER, SECTION 15
 (RAMSEY COUNTY MONUMENT)

STATION LARP
 Y 173455.533
 X 587572.451

Y 176073.953
 X 587342.340

SW CORNER SECTION 15
 (RAMSEY COUNTY MONUMENT)

Y 173435.052
 X 587355.737

LEGEND

- CENTERLINE R.R. TRACK
- FENCE
- RETAINING WALL
- CONCRETE CURB
- BITUMINOUS SURFACE
- CONCRETE SLAB
- BUILDING
- IRON MONUMENT FOUND
- IRON MONUMENT PLACED
- (1/2" x 18" IRON PIPE WITH PLASTIC CAP MARKED #18421
- 3/8" x 18" ROD WITH PLASTIC CAP
- POWER POLE
- TELEPHONE POLE
- STREET LIGHT
- MANHOLE
- CATCH BASIN
- HYDRANT

I hereby certify that this survey was prepared by me or under my supervision and that I am a duly registered land surveyor under Minnesota Statutes Section 326.02 to 326.16.

Lloyd E. Paus Reg. No. 18421
 Date: 8-28-91
 LOT BOUNDARIES IN GLADSTONE REVISED 3-1-93

NOTE: COORDINATE VALUES SHOWN ARE BASED ON THE RAMSEY COUNTY PLANE COORDINATE SYSTEM, MARCH 1991 ADJUSTMENT.

Hansen Thorp Pellinen Olson Inc.
 Civil Engineers
 Land Surveyors
 Landscape Architects