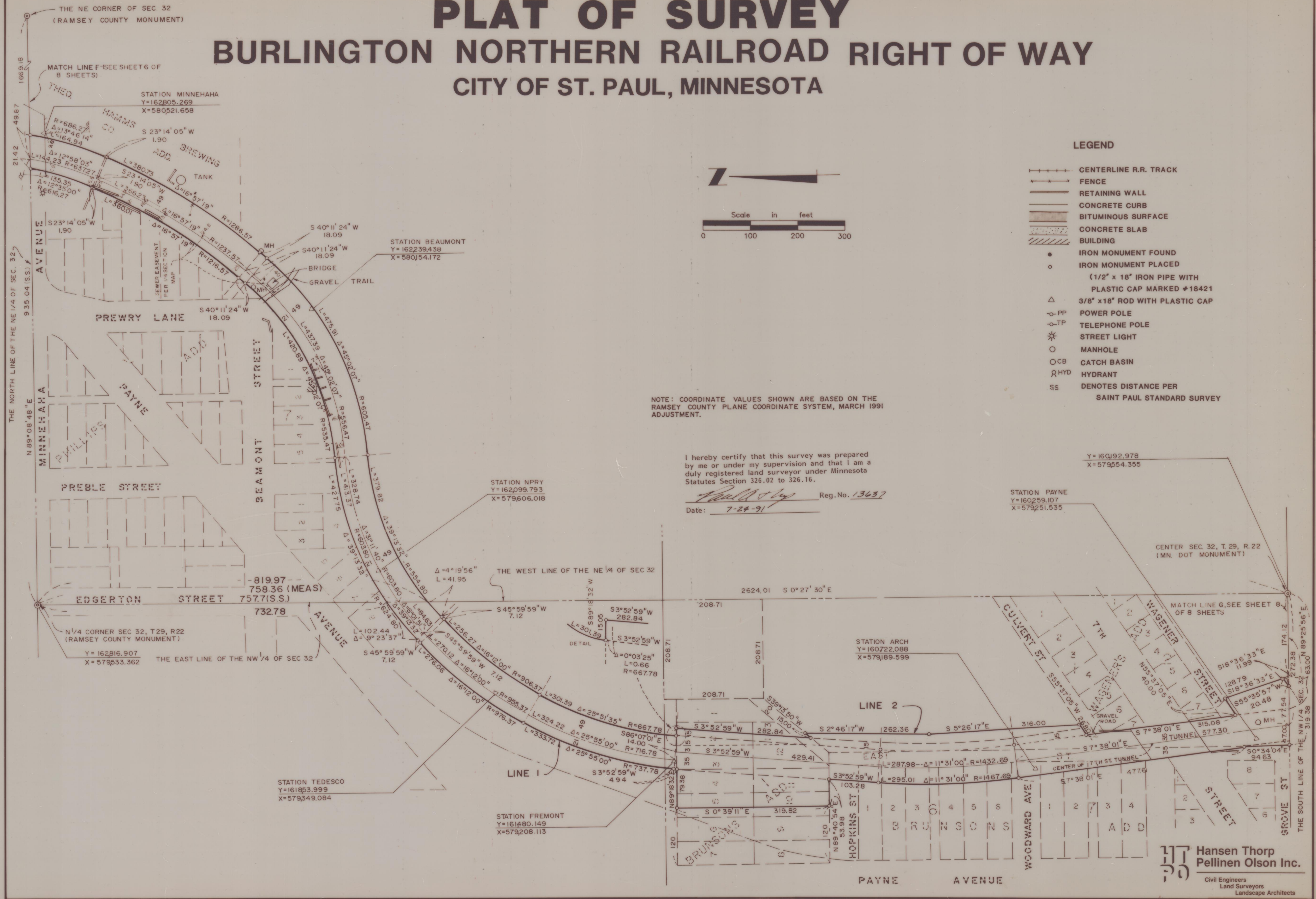


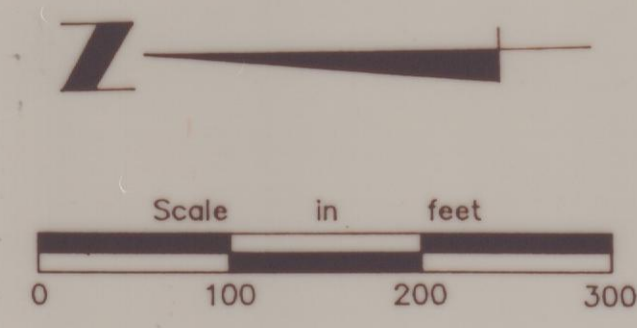
# PLAT OF SURVEY

## BURLINGTON NORTHERN RAILROAD RIGHT OF WAY

### CITY OF ST. PAUL, MINNESOTA



- LEGEND**
- CENTERLINE R.R. TRACK
  - FENCE
  - RETAINING WALL
  - CONCRETE CURB
  - BITUMINOUS SURFACE
  - CONCRETE SLAB
  - BUILDING
  - IRON MONUMENT FOUND
  - IRON MONUMENT PLACED  
(1/2" x 18" IRON PIPE WITH PLASTIC CAP MARKED #18421)
  - 3/8" x 18" ROD WITH PLASTIC CAP
  - PP POWER POLE
  - TP TELEPHONE POLE
  - STREET LIGHT
  - MANHOLE
  - CB CATCH BASIN
  - HYD HYDRANT
  - SS DENOTES DISTANCE PER SAINT PAUL STANDARD SURVEY

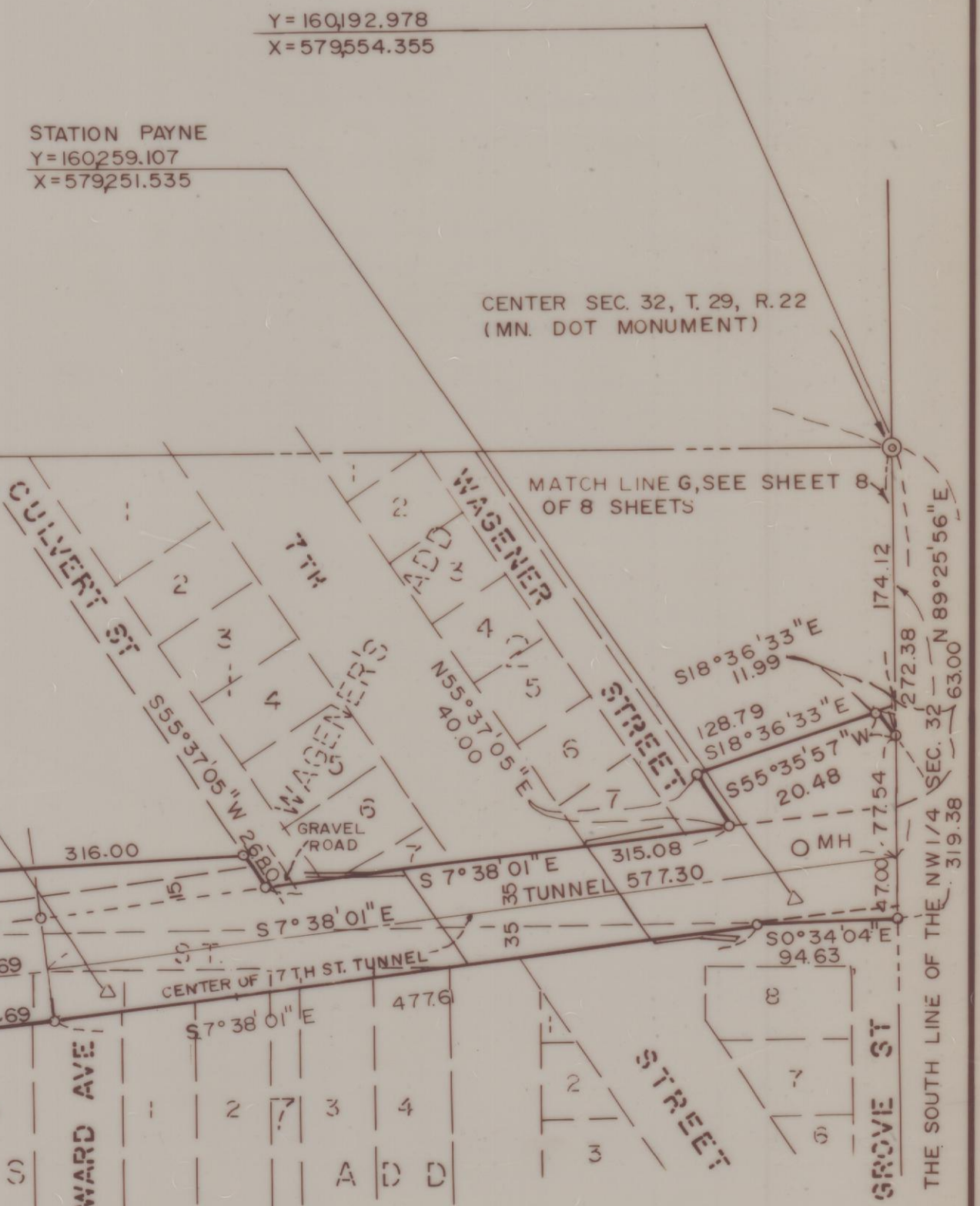


NOTE: COORDINATE VALUES SHOWN ARE BASED ON THE RAMSEY COUNTY PLANE COORDINATE SYSTEM, MARCH 1991 ADJUSTMENT.

I hereby certify that this survey was prepared by me or under my supervision and that I am a duly registered land surveyor under Minnesota Statutes Section 326.02 to 326.16.

*Paul J. ...* Reg. No. 13637

Date: 7-24-91



**Hansen Thorp Pellinen Olson Inc.**  
Civil Engineers  
Land Surveyors  
Landscape Architects