

FROM THE OFFICE OF

CHARLES O. GEORGI COMPANY

2215 West County Road B

Saint Paul 13, Minnesota

REGISTERED CIVIL ENGINEER AND LAND SURVEYOR

Certificate of Survey

I Hereby Certify that this plat shows a survey made by me of the property described on this plat, and that the corners are correctly placed as shown, and that all locations have been correctly shown.

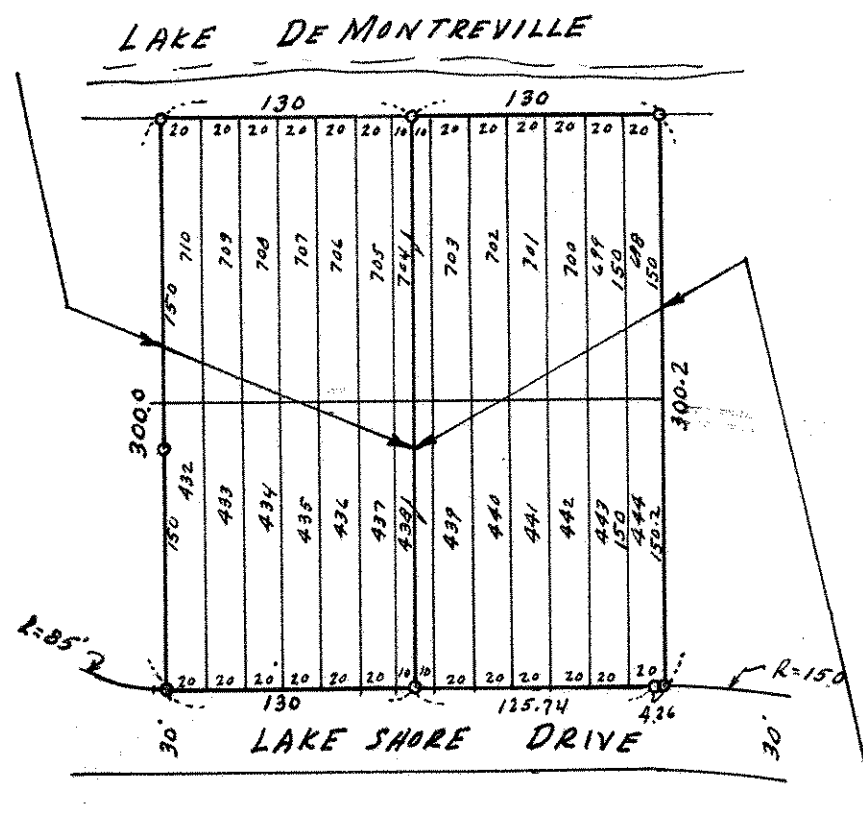
Surveyed For *Mrs. E. J. Crombie & Modern Realty*

Date.....*May 1962*.....

Scale.....*1"=100*.....

By *Charles O. Georgi*
REGISTERED LAND SURVEYOR

Description: *Lots 432, 433, 434, 435, 436, 437 and West 1/2 of Lot 438
Lots 710, 709, 708, 707, 706, 705 and West 1/2 of Lot 704
LANE'S DEMONTREVILLE COUNTRY CLUB*



Description:
*Lots 439, 440, 441, 442, 443, 444 and the East 1/2 of Lot 438
Lots 703, 702, 701, 700, 699, 698 and the East 1/2 of Lot 704
LANE'S DE MONTREVILLE COUNTRY CLUB*

o Denotes Iron Monument.