

FROM THE OFFICE OF

**CHARLES O. GEORGI COMPANY**

2215 West County Road B

Saint Paul, Minnesota 55113

REGISTERED CIVIL ENGINEER AND LAND SURVEYOR

**Certificate  
of Survey**

I Hereby Certify that this plat shows a survey made by me of the property described on this plat, and that the corners are correctly placed as shown, and that all locations have been correctly shown.

Surveyed For Harry Wellner

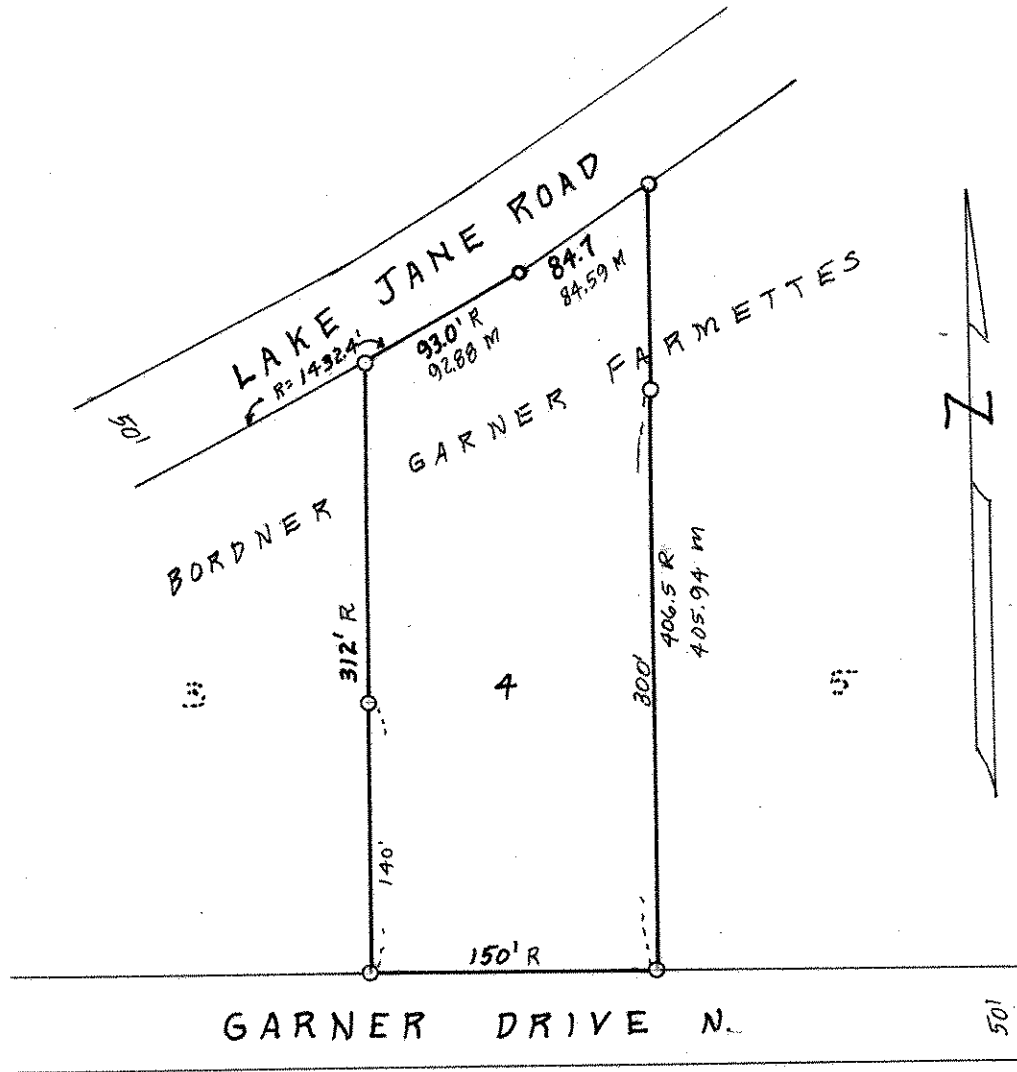
Date September 1968

Scale 1" = 100'

By Charles O. Georgi  
REGISTERED LAND SURVEYOR

**Description:**

Lot 4,  
Bordner Garner Farmettes



O Denotes Iron Monument  
M Denotes Measured as Calculated  
R Denotes Record Distance