

Certificate of Survey

CHARLES O. GEORGI COMPANY

2215 West County Road B

Saint Paul 13, Minnesota

REGISTERED CIVIL ENGINEER AND LAND SURVEYOR

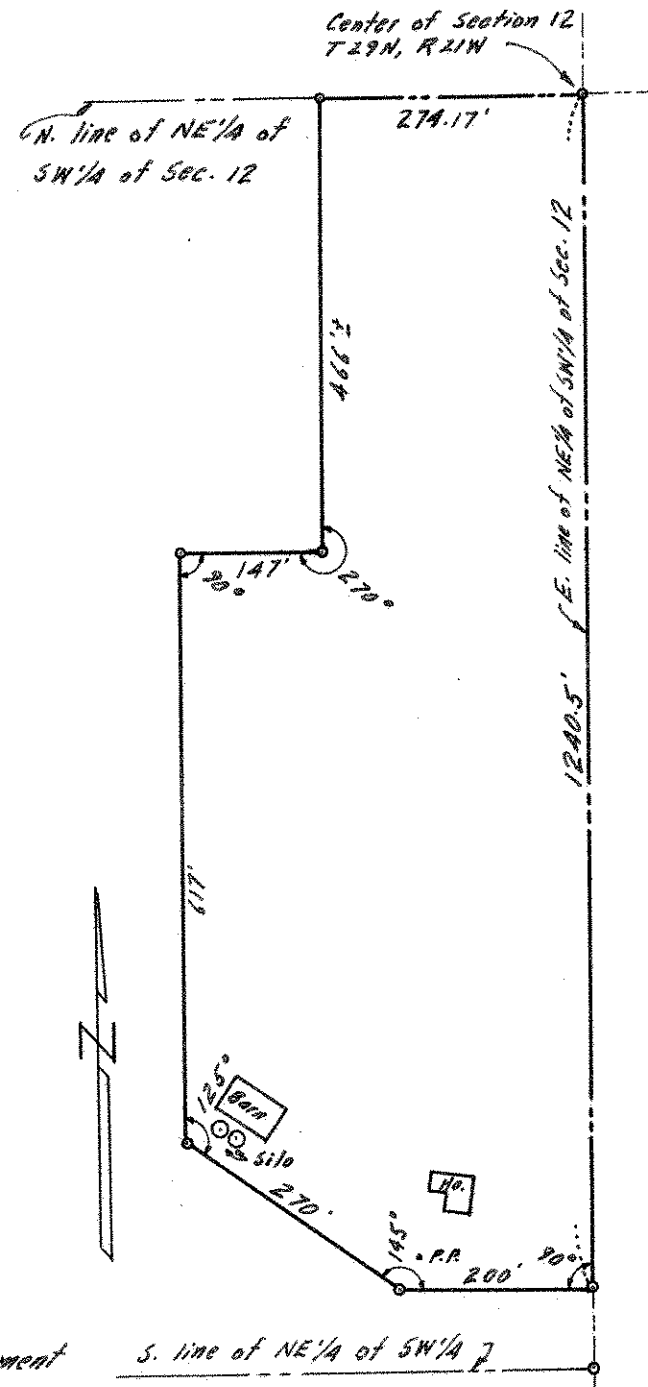
I Hereby Certify that this plat shows a survey made by me of the property described on this plat, and that the corners are correctly placed as shown, and that all locations have been correctly shown.

Surveyed For Thomas WillmusDate April 1964Scale 1" = 200'By Charles O. Georgi
REGISTERED LAND SURVEYOR

Description:

All that part of the NE 1/4 of the SW 1/4 of Section 12, T29N, R21W, Washington County, Minn, described as follows: Beginning at the center of said Section 12; thence due South along the East line of said NE 1/4 of SW 1/4 a distance of 1240.5 feet; thence at right angles due West a distance of 200 feet; thence N. 55°00' W. a distance of 270 feet; thence due North a distance of 617 feet; thence at right angles due East a distance of 147 feet; thence at right angles due North a distance of 466 feet more or less to the North line of said NE 1/4 of SW 1/4; thence Easterly along the North line of said NE 1/4 of SW 1/4 a distance of 274.17 feet to the place of beginning. Containing 10 Acres more or less.

Together with a road easement 33 feet in width on and across the Easterly 33 feet of said SW 1/4 of Section 12 and the NW 1/4 of Section 13, T29N, R21W, to Highway 212.



○ Denotes Iron Monument