

FROM THE OFFICE OF

CHARLES O. GEORGI COMPANY

2215 West County Road B

Saint Paul 13, Minnesota

REGISTERED CIVIL ENGINEER AND LAND SURVEYOR

**Certificate
of Survey**

I Hereby Certify that this plat shows a survey made by me of the property described on this plat, and that the corners are correctly placed as shown, and that all locations have been correctly shown.

Surveyed For Charles Brachman

Date October 1959

Scale 1"=100'

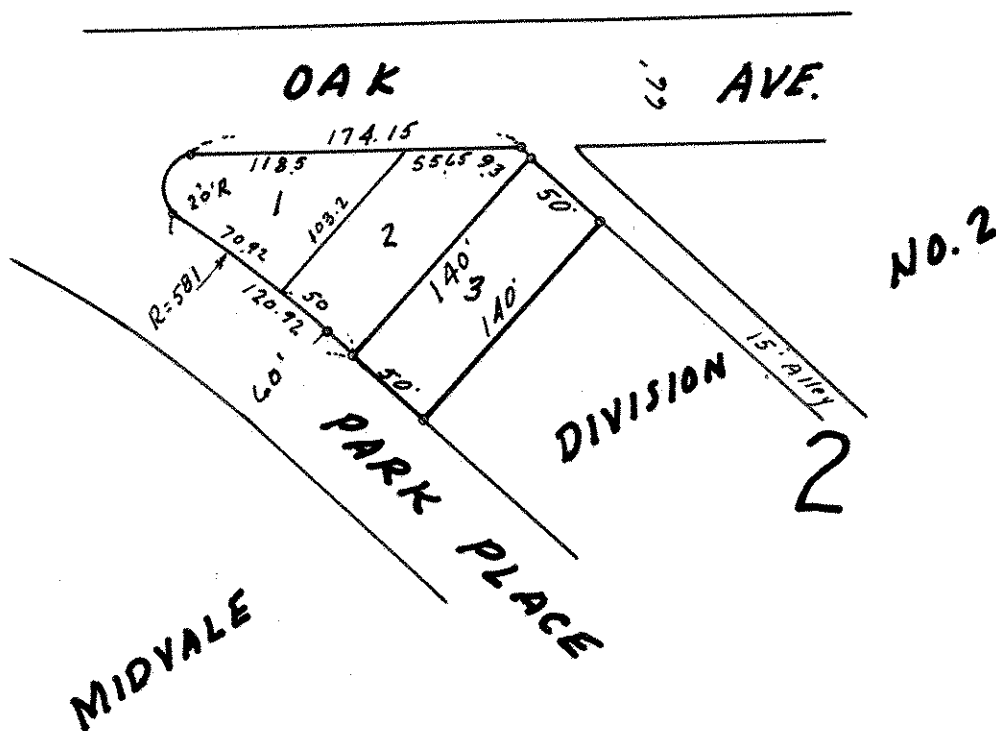
By Charles O. Georgi
REGISTERED LAND SURVEYOR

Description:

Lots 1 and 2
Block 2
Midvale Division No. 2

DESCRIPTION:

Added Sept., 1962
Lot 3
Block 2
Midvale Division No. 2



• Denotes Iron Monument.