

FROM THE OFFICE OF

CHARLES O. GEORGI COMPANY

2215 West County Road B

Saint Paul 13, Minnesota

REGISTERED CIVIL ENGINEER AND LAND SURVEYOR



**Certificate
of Survey**

I Hereby Certify that this plat shows a survey made by me of the property described on this plat, and that the corners are correctly placed as shown, and that all locations have been correctly shown.

Surveyed For *Charles Brochman Jr.*

Date *August 1961*

Scale *1" = 100'*

By *Charles O. Georgi*
REGISTERED LAND SURVEYOR

Description:

*Lot 1 and 2
Block 9
Midvale Division No. 3*

10/25/62

I hereby certify that on this date as survey location was made and the partly complete house is located on the described lots as shown hereon. There are no encroachments. Charles O. Georgi

PARK

MIDVALE

BOULEVARD

9

DIVISION

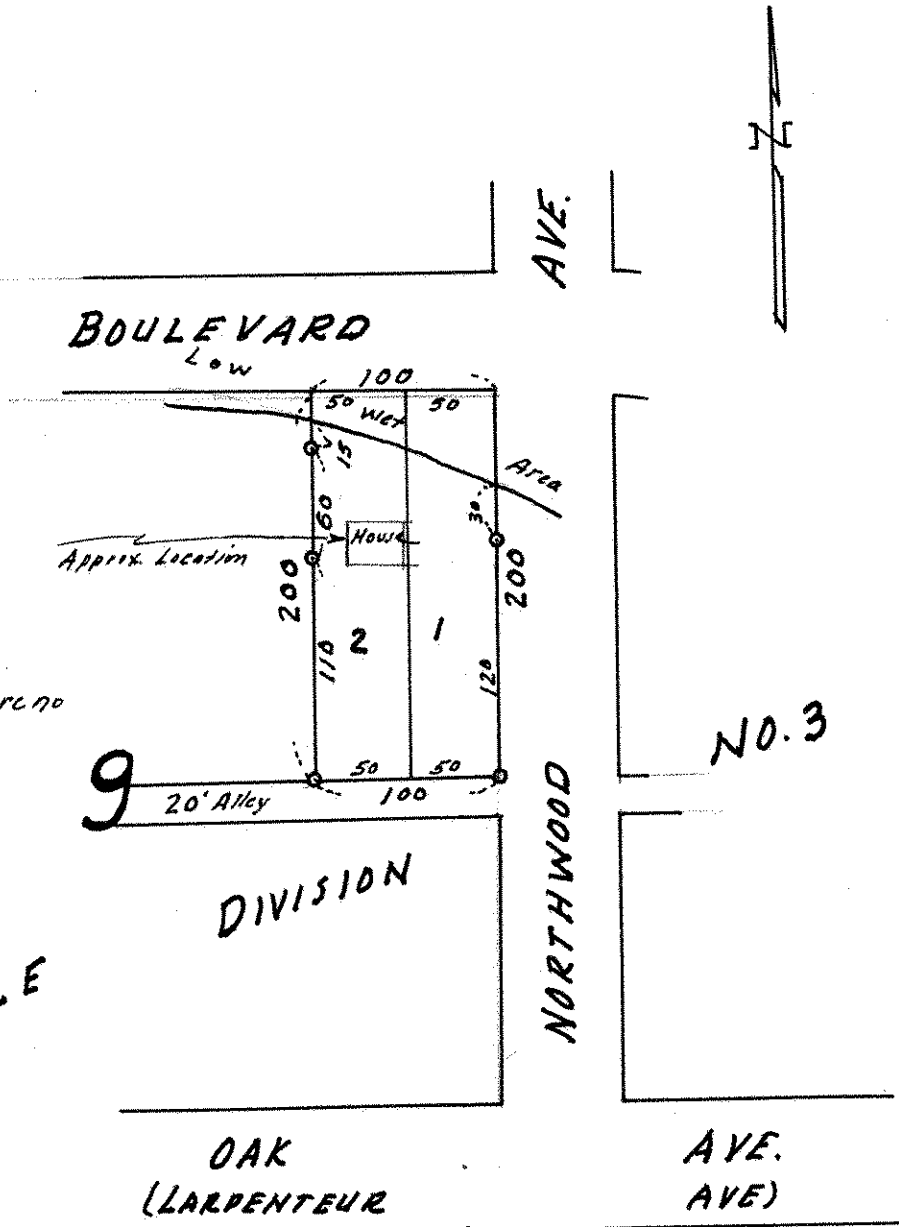
**OAK
(LARPENTEUR**

AVE.

NORTHWOOD

**AVE.
AVE)**

NO. 3



o Denotes Iron Monument.