

FROM THE OFFICE OF

CHARLES O. GEORGI COMPANY

2215 West County Road B

Saint Paul, Minnesota 55113

REGISTERED CIVIL ENGINEER AND LAND SURVEYOR

Certificate of Survey

I Hereby Certify that this plat shows a lot survey made by me on the property described on this plat, and that all locations, have been correctly shown, and that the corners are correctly for Charles E. Brochman Estates, placed as shown.

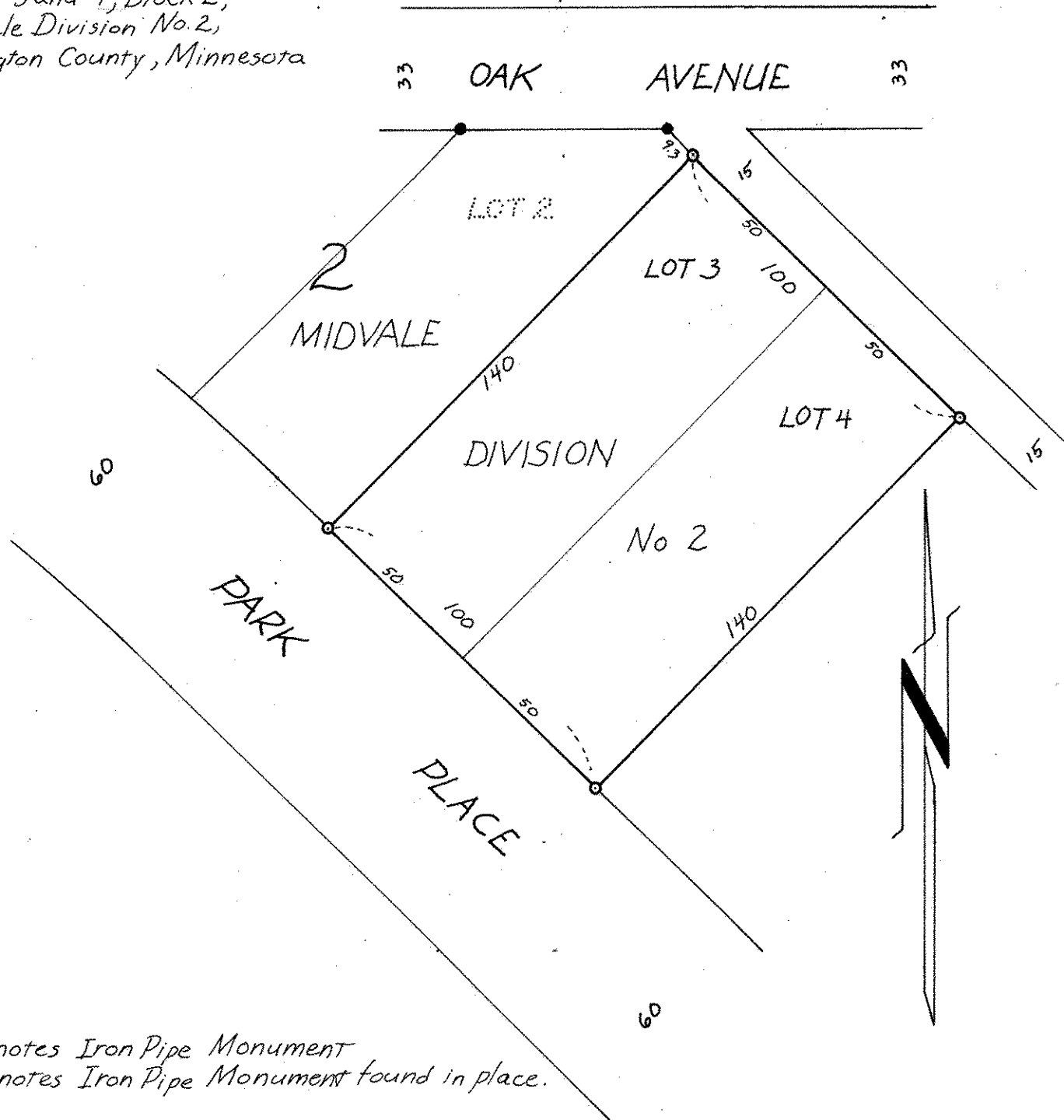
Date May 19 1971

Scale 1" = 40'

By *Charles O. Georgi*
REGISTERED LAND SURVEYOR

Description:

Lots 3 and 4, Block 2,
Midvale Division No. 2,
Washington County, Minnesota



- Denotes Iron Pipe Monument
- Denotes Iron Pipe Monument found in place.