

FROM THE OFFICE OF

# CHARLES O. GEORGI COMPANY

2215 West County Road B

Saint Paul 13, Minnesota

REGISTERED CIVIL ENGINEER AND LAND SURVEYOR

## Certificate of Survey

I Hereby Certify that this plat shows a survey made by me of the property described on this plat, and that the corners are correctly placed as shown, and that all locations have been correctly shown.

Surveyed For *Mr. Fred Kohrt*

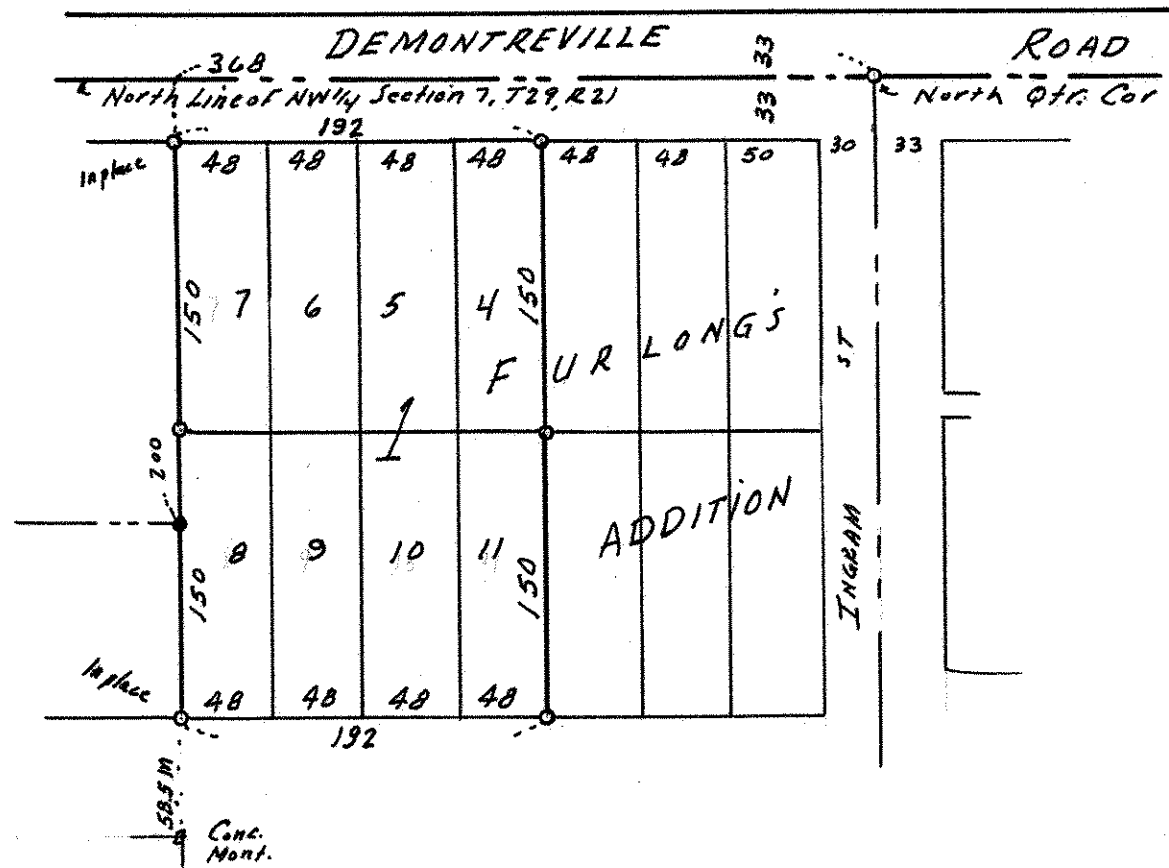
Date *August 1963*

Scale *1" = 100'*

By *Charles O. Georgi*  
REGISTERED LAND SURVEYOR

Description:

*Lots 4, 5, 6, 7, 8, 9, 10 and 11  
Block 1  
Furlong's Addition*



o Denotes Iron Monument.