

FROM THE OFFICE OF

**CHARLES O. GEORGI COMPANY**

2215 West County Road B

Saint Paul, Minnesota 55113

REGISTERED CIVIL ENGINEER AND LAND SURVEYOR



**Certificate  
of Survey**

I Hereby Certify that this plat shows a survey made by me of the property described on this plat, and that the corners are correctly placed as shown, and that all locations have been correctly shown.

Surveyed For John Kunz

Date December 1976

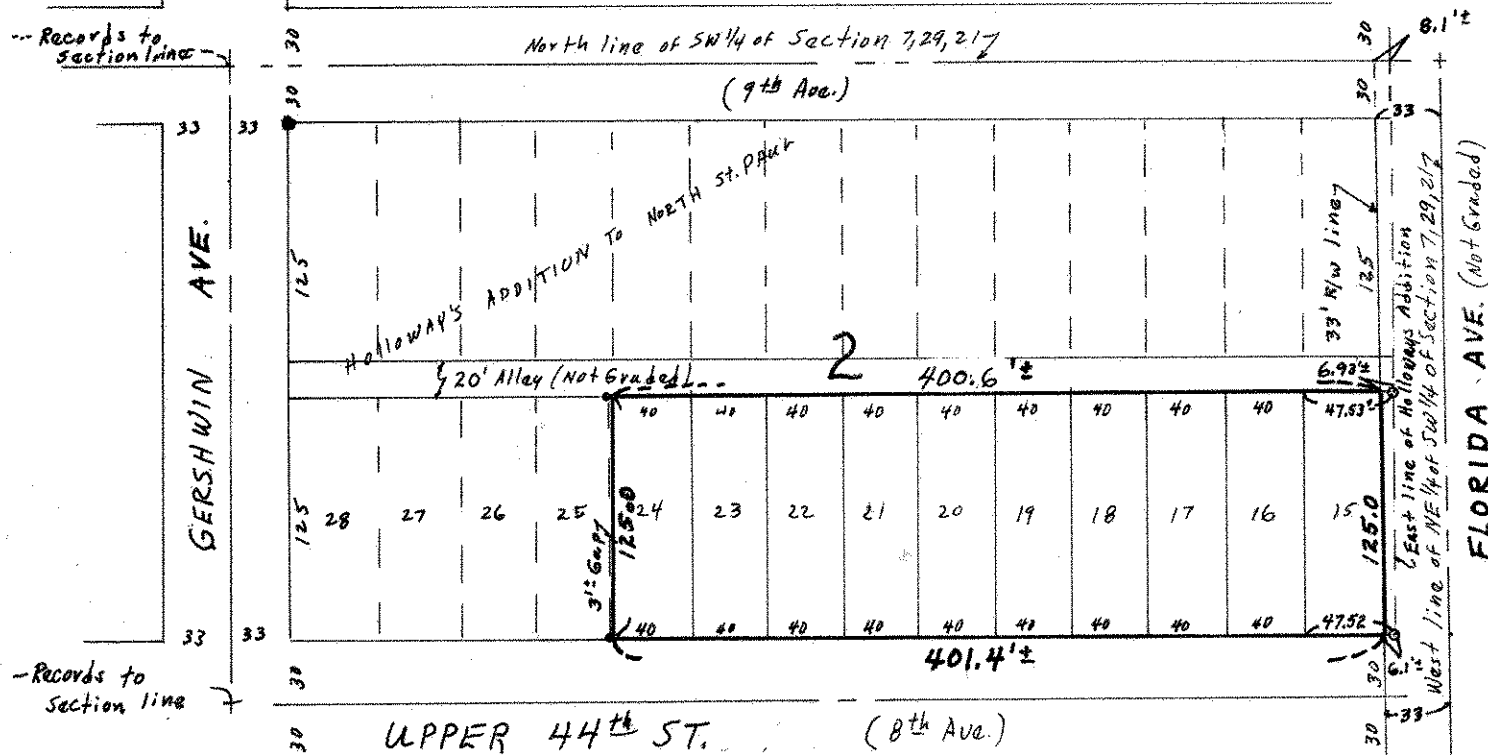
Scale 1" = 100'

By Charles O. Georgi  
REGISTERED LAND SURVEYOR

**Description:**

Lots 15 to 24, Block 2, Holloway's Addition to North St. Paul  
Washington County, Minnesota

- Denotes Irons found in place
- Denotes Iron Monument



Note: Surveyed in accord with previous surveys of blocks to South and West, irons found in place, and lines of occupancy in this area, wherein record measurements were used from Township line. Thus Florida St. will vary in width to said qtr qtr line and not be 33 feet wide as platted. Lots 25-28 surveyed by others using some form of proration.

6.93  
1.17