

FROM THE OFFICE OF

CHARLES O. GEORGI COMPANY

2215 West County Road B

Saint Paul, Minnesota 55113

REGISTERED CIVIL ENGINEER AND LAND SURVEYOR

Certificate of Survey

I Heroby Certify that this plat shows a survey made by me of the property described on this plat, and that the corners are correctly placed as shown, and that all locations have been correctly shown.

Surveyed For Ted Glasrud Assoc

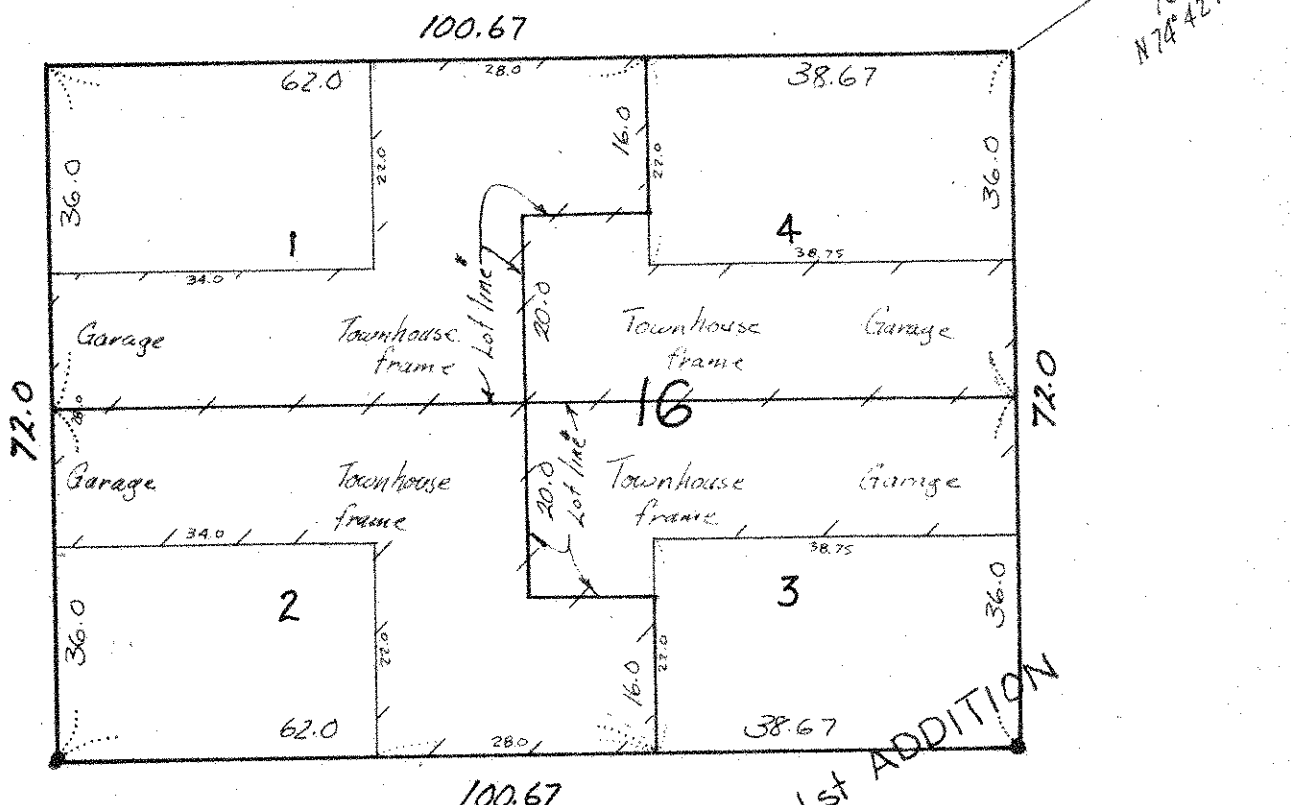
Date August 1977

Scale 1" = 20'

By *Charles O. Georgi*
REGISTERED LAND SURVEYOR

Description:

Lots 1, 2, 3 and 4,
Block 16,
Strate's Farm 1st Addition,
Washington County,
Minnesota.



- Denotes iron monument found in place
- Lot line* Denotes where centerline of End. wall is on lot line, and above End there are two 4' walls seperated by an air space that is on the lot line

STRATE'S FARM 1st ADDITION