

CHARLES O. GEORGI COMPANY

2215 West County Road B

Saint Paul, Minnesota 55113

REGISTERED CIVIL ENGINEER AND LAND SURVEYOR



I Hereby Certify that this plat shows a survey made by me of the property described on this plat, and that the corners are correctly placed as shown, and that all locations have been correctly shown.

Surveyed For Ted Glasrud Associates

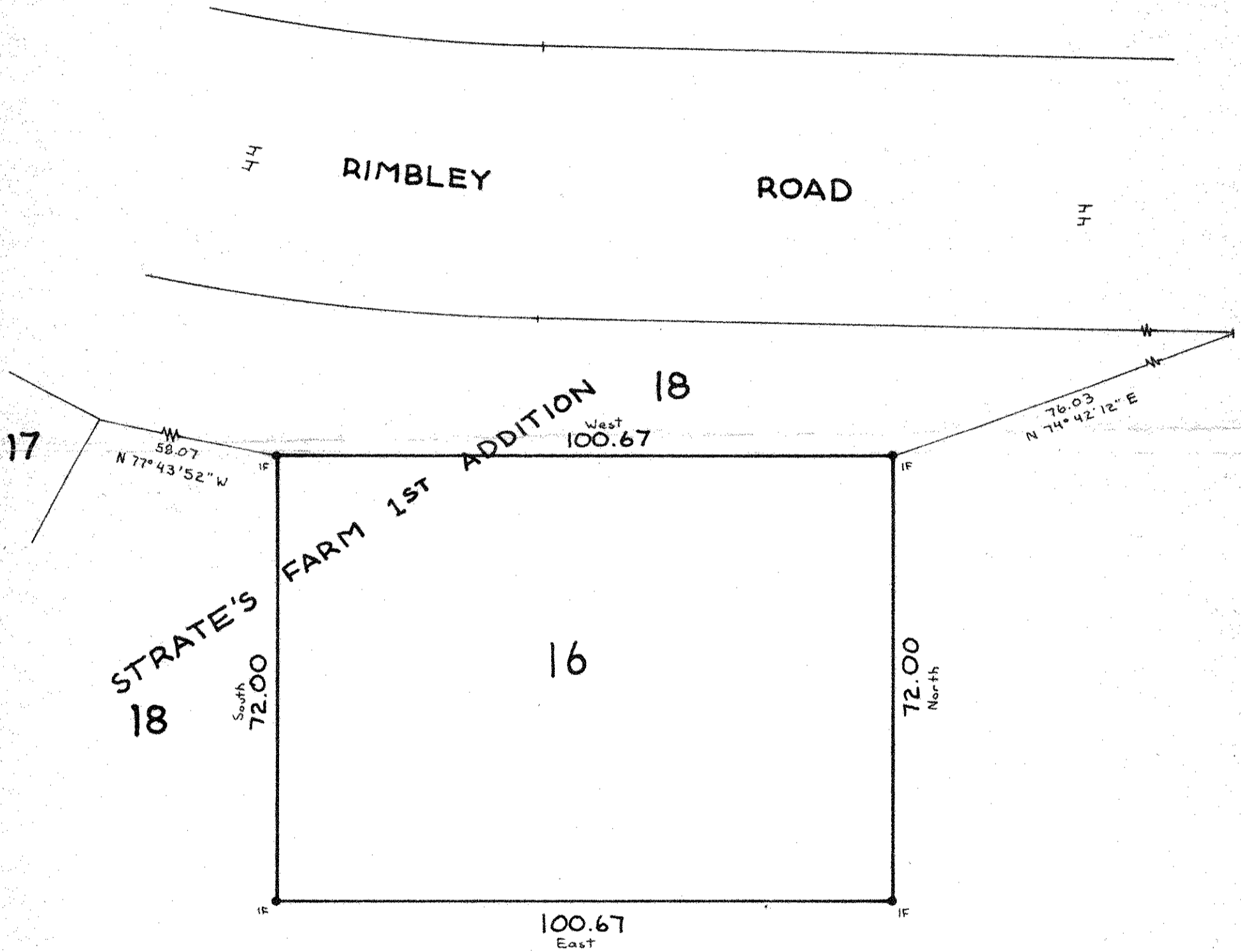
Date March 1977

Scale 1" = 20'

Description:

Block 16,
Strate's Farm 1st Addition,
Washington County, Minnesota

By Charles O. Georgi
REGISTERED LAND SURVEYOR



• Denotes Iron Pipe Monument found in place