

FROM THE OFFICE OF

CHARLES O. GEORGI COMPANY

2215 West County Road B

Saint Paul, Minnesota 55113

REGISTERED CIVIL ENGINEER AND LAND SURVEYOR

**Certificate
of Survey**

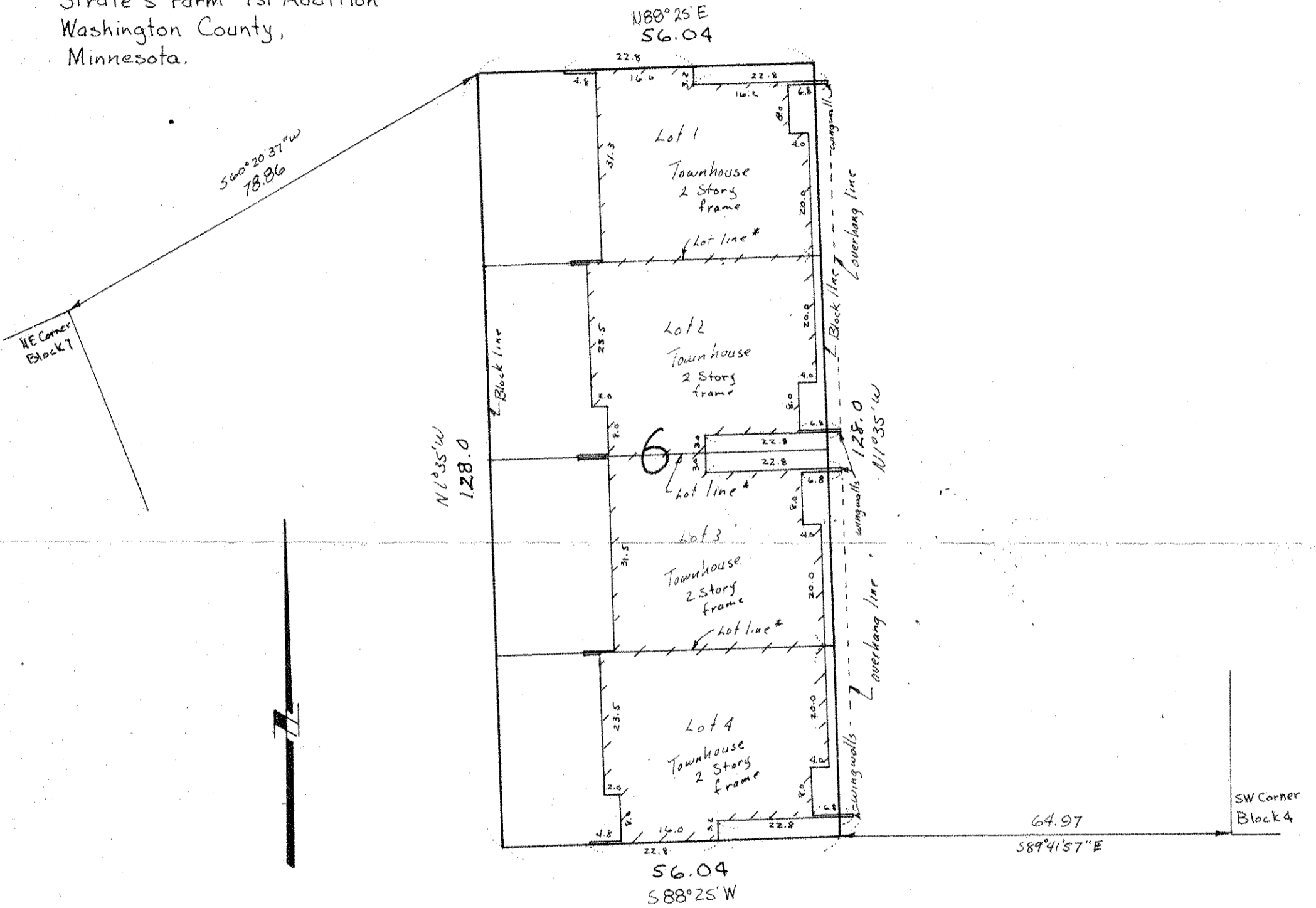
I Hereby Certify that this plat shows a survey made by me of the property described on this plat, and that the corners are correctly placed as shown, and that all locations have been correctly shown.

Surveyed For *Ted Glasrud Assoc.*
Date *April 1978*
Scale *1" = 20'*

By *Donald W Schmidt*
REGISTERED LAND SURVEYOR

Description:

Lots 1, 2, 3 and 4,
Block 6,
Strate's Farm 1st Addition
Washington County,
Minnesota.



* Lot line Denotes where centerline of fnd wall is on lot line, and above fnd there are two 4" Walls seperated by an air space that is on the lot line
Note wingwalls and overhang are over Block line
Access by private Drive