

Certificate of Survey

FROM THE OFFICE OF

CHARLES O. GEORGI COMPANY

2215 West County Road B

Saint Paul, Minnesota 55113

REGISTERED CIVIL ENGINEER AND LAND SURVEYOR

I Hereby Certify that this plat shows a ^{building locations} ~~survey~~ made by me of the property described on this plat, ~~and that the corners are correctly placed as shown,~~ and that all locations have been correctly shown.

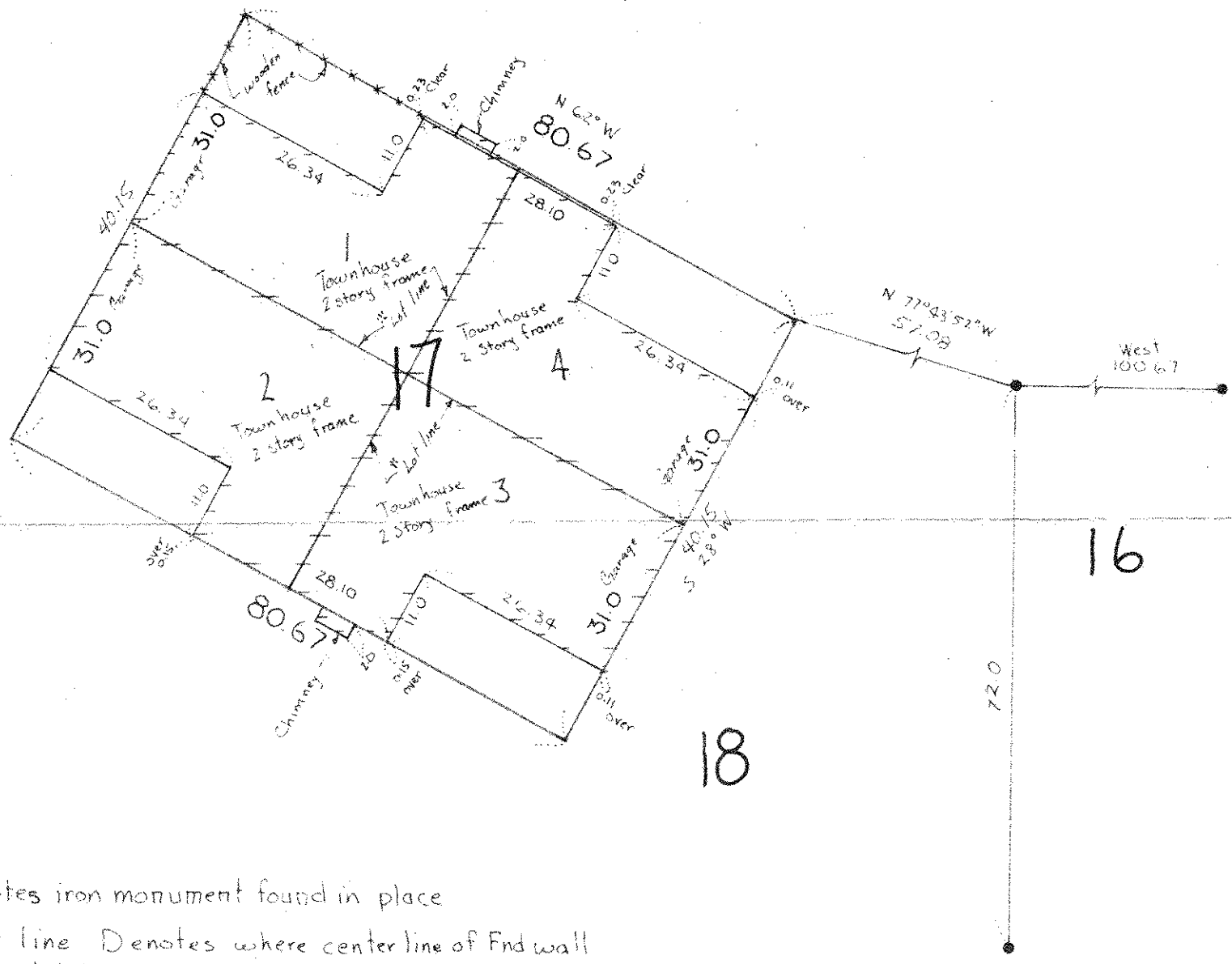
Surveyed For Ted Glasrud Associates

Date February 1977

Scale 1" = 20'

By Donald W. Schmidt
REGISTERED LAND SURVEYOR

Description:
Lots 1, 2, 3 and 4,
Block 17,
Strate's Farm 1st Addition,
Washington County,
Minnesota.



- Denotes iron monument found in place
 - * Lot line Denotes where center line of End wall is on lot line, and above End there are two 4" walls separated by an air space that is on the lot line
- Note: Eaves and overhangs not shown are over line