

FROM THE OFFICE OF

# CHARLES O. GEORGI COMPANY

2215 West County Road B

Saint Paul, Minnesota 55113

REGISTERED CIVIL ENGINEER AND LAND SURVEYOR

## Certificate of Survey

I Heroby Certify that this plat shows a survey made by me of the property described on this plat, and that the corners are correctly placed as shown, and that all locations have been correctly shown. 10/24/77 Added House Location COG

Surveyed For Ted Glasrud Assoc

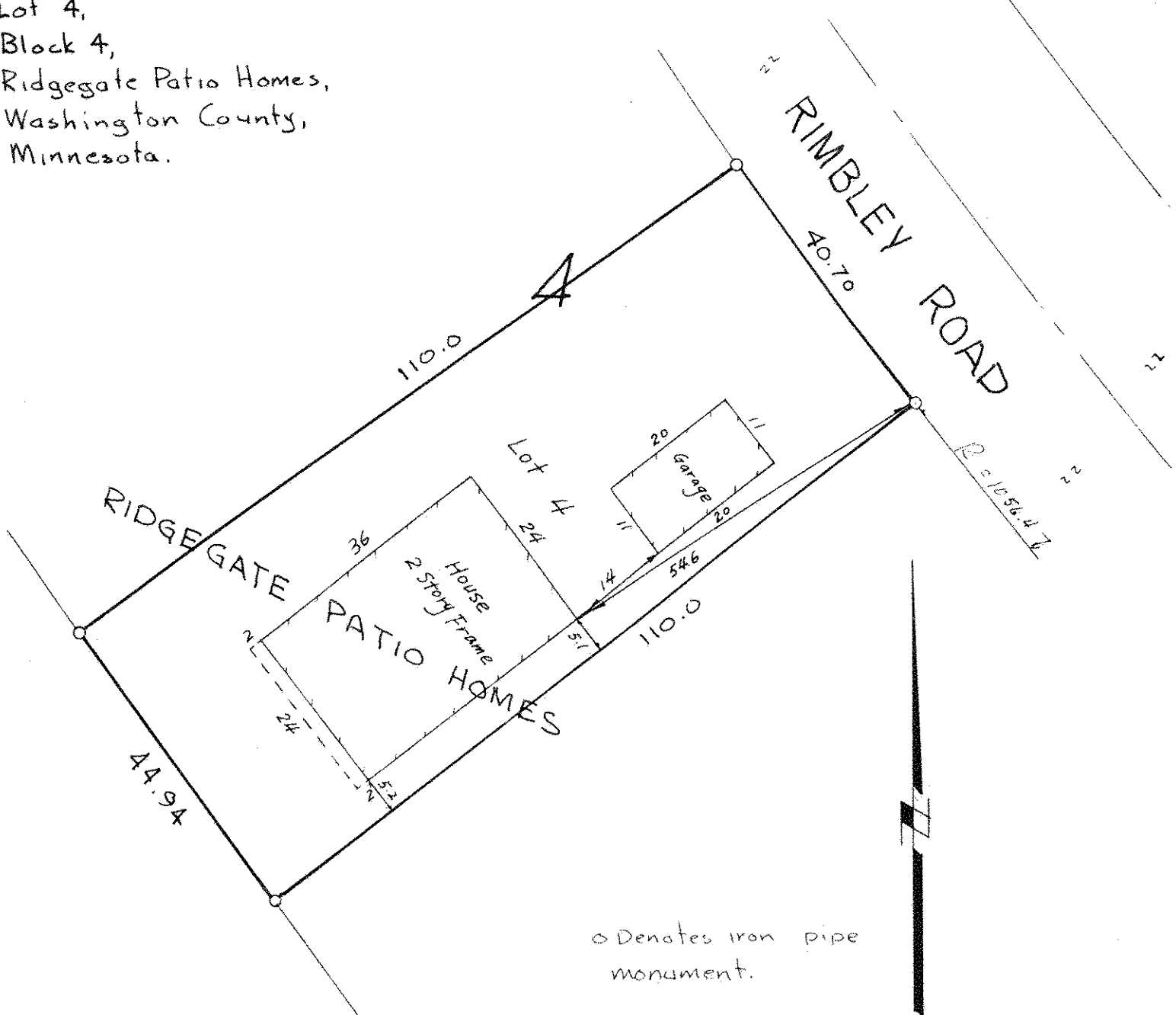
Date July 1977

Scale 1"=20'

By Charles O. Georgi  
REGISTERED LAND SURVEYOR

**Description:**

Lot 4,  
Block 4,  
Ridgegate Patio Homes,  
Washington County,  
Minnesota.



o Denotes iron pipe monument.