

NE 17 28 21

FROM THE OFFICE OF

CHARLES O. GEORGI COMPANY

2215 West County Road B

Saint Paul, Minnesota 55113

REGISTERED CIVIL ENGINEER AND LAND SURVEYOR

Certificate of Survey

I Hereby Certify that this plat shows a survey made by me of the property described on this plat, and that the corners are correctly placed as shown, and that all locations have been correctly shown. 10/10/77 Added House Location, C.O.G.

Surveyed For Ted Glasrud Assoc.

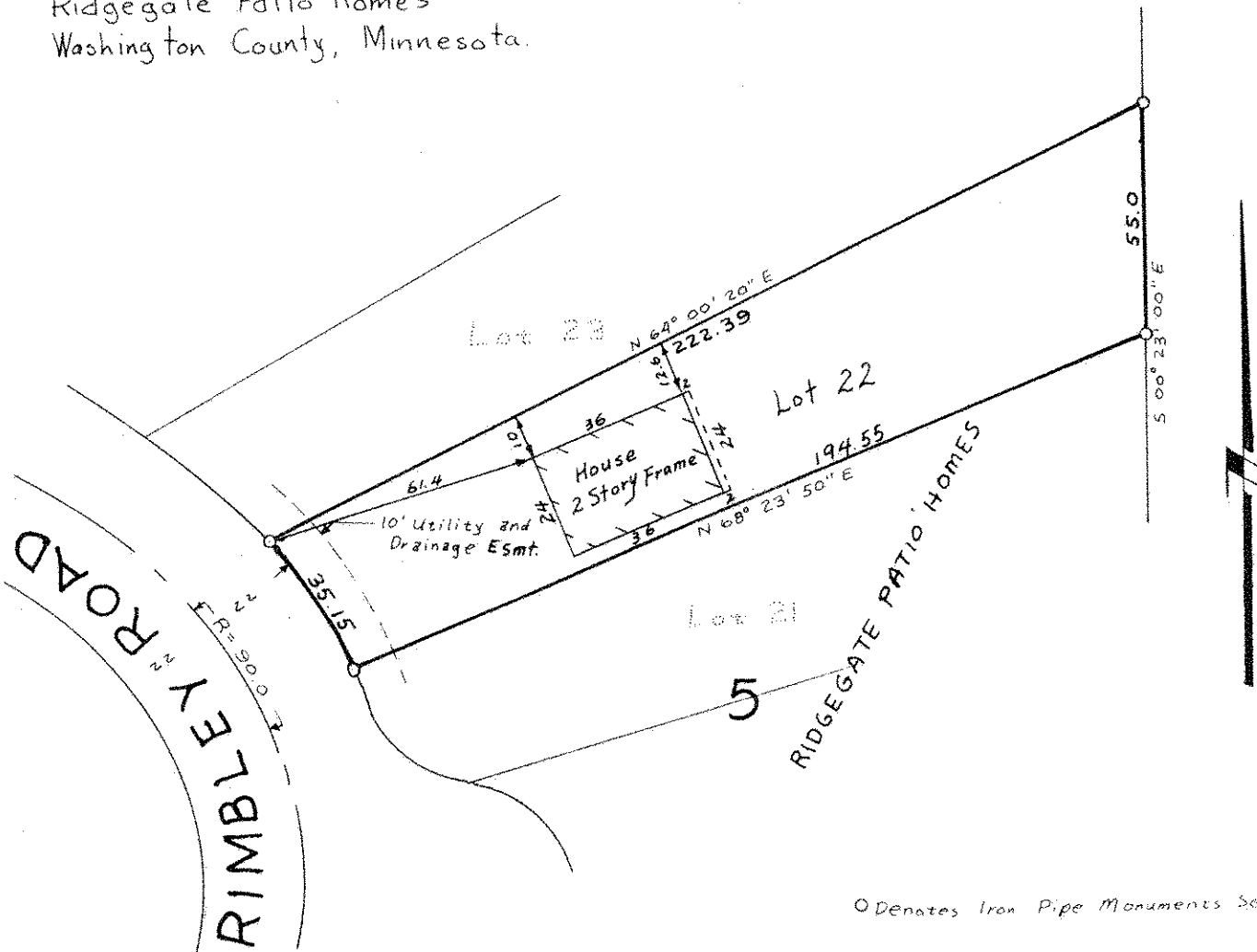
Date July 1977

Scale 1" = 40'

By *Charles O. Georgi*
REGISTERED LAND SURVEYOR

Description:

Lot 22, Block 5,
Ridgegate Patio Homes
Washington County, Minnesota.



O Denotes Iron Pipe Monuments Set