

FROM THE OFFICE OF

CHARLES O. GEORGI COMPANY

2215 West County Road B

Saint Paul, Minnesota 55113

REGISTERED CIVIL ENGINEER AND LAND SURVEYOR

Certificate of Survey

I Hereby Certify that this plat shows a survey made by me of the property described on this plat, and that the corners are correctly placed as shown, and that all locations have been correctly shown. 11/19/77. Added Hsa location etc.

Surveyed For Ted Glasvick Assoc.

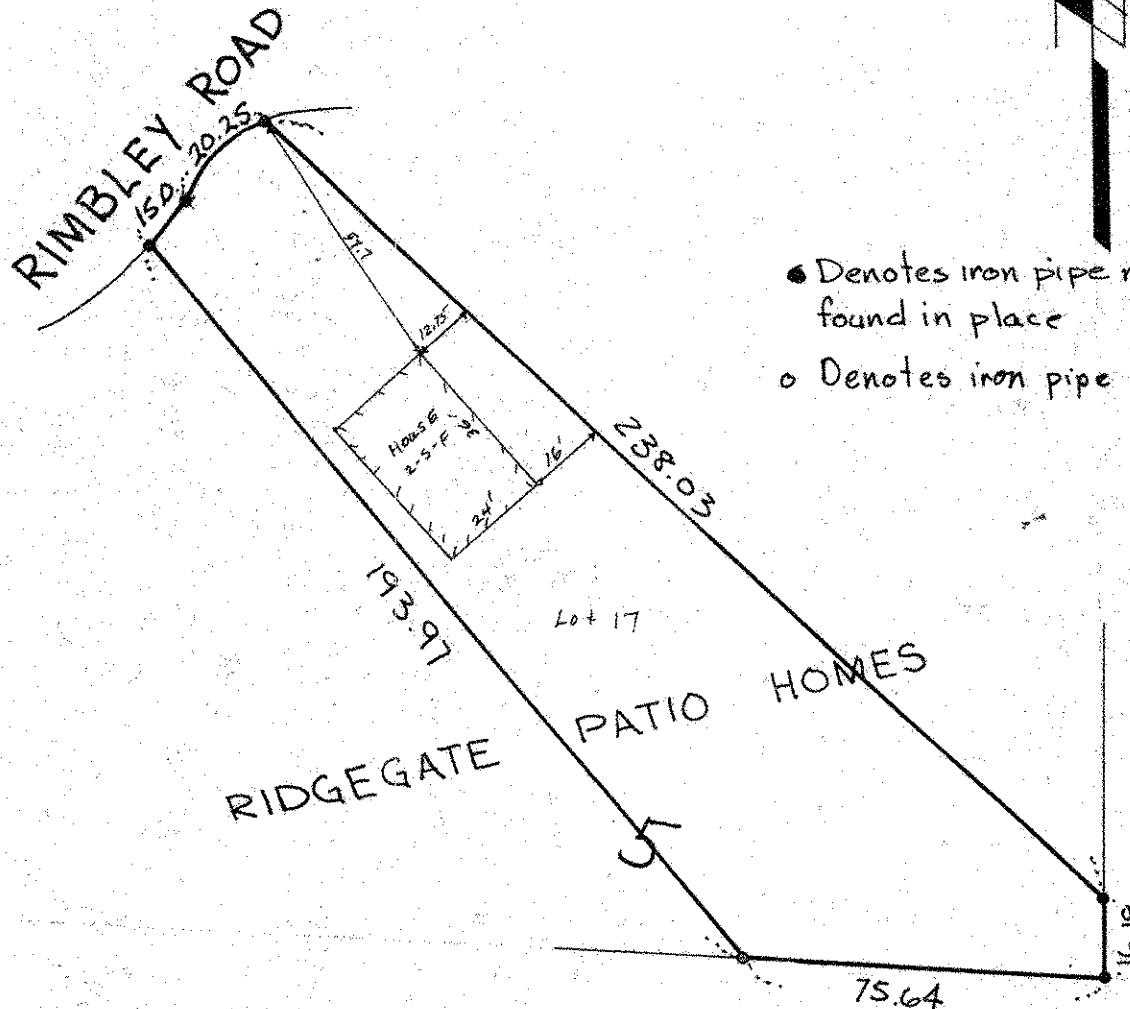
Date Oct 1977

Scale 1" = 40'

By *Charles O. Georgi*
REGISTERED LAND SURVEYOR

Description:

Lot 17,
Block 5
Ridgegate Patio Homes,
Washington County,
Minnesota.



- Denotes iron pipe monument found in place
- Denotes iron pipe monument.