

FROM THE OFFICE OF

CHARLES O. GEORGI COMPANY

2215 West County Road B

Saint Paul, Minnesota 55113

REGISTERED CIVIL ENGINEER AND LAND SURVEYOR

Certificate of Survey

I Hereby Certify that this plat shows a survey made by me of the property described on this plat, and that the corners are correctly placed as shown, and that all locations have been correctly shown. 9/27/77 Added bldg. location C.O.G.

Surveyed For Ted Glasrud Assoc.

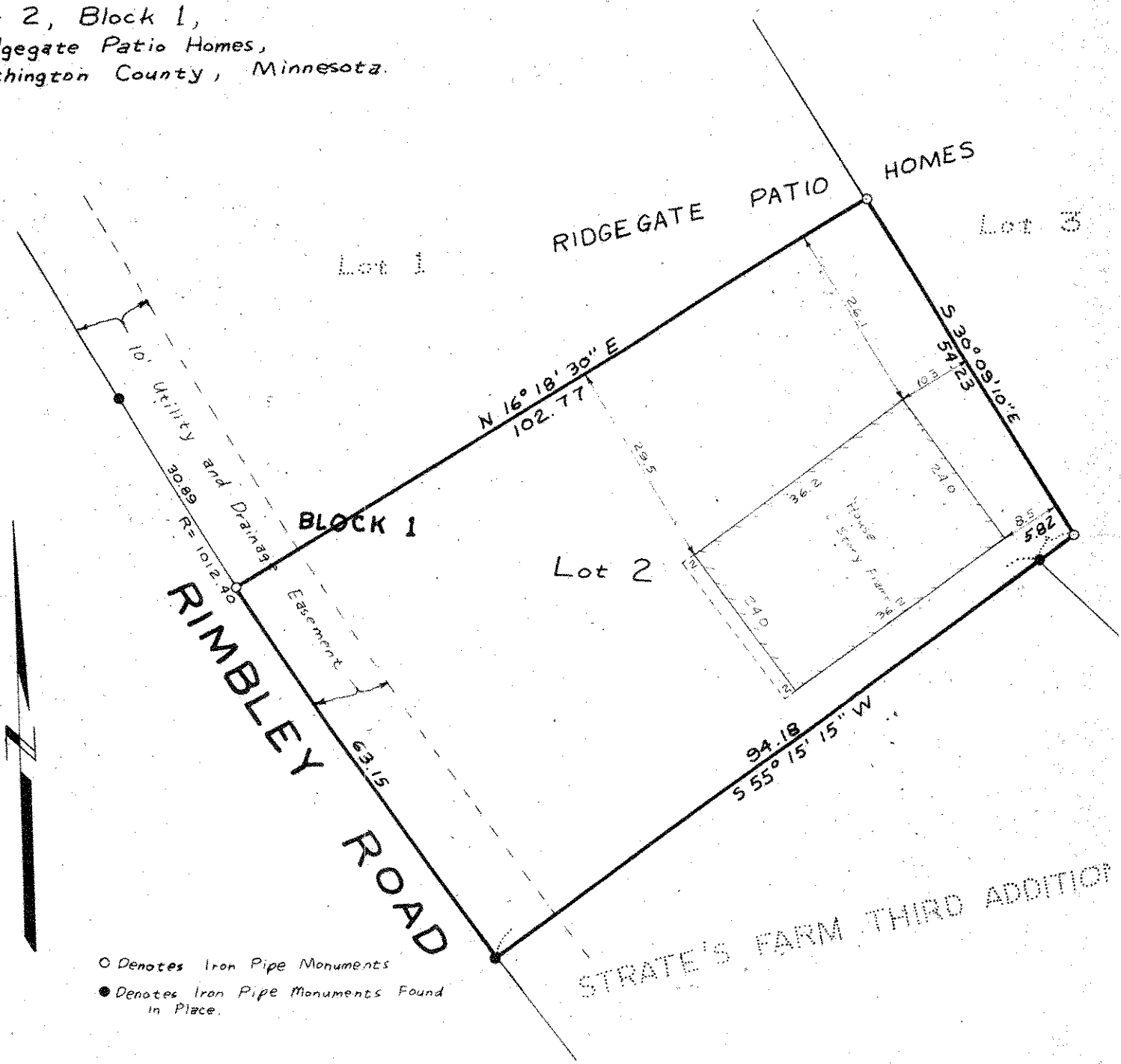
Date July 1977

Scale 1" = 20'

By Charles O. Georgi
REGISTERED LAND SURVEYOR

Description:

Lot 2, Block 1,
Ridgegate Patio Homes,
Washington County, Minnesota.



○ Denotes Iron Pipe Monuments
● Denotes Iron Pipe Monuments Found in Place.