

FROM THE OFFICE OF

CHARLES O. GEORGI COMPANY

2215 West County Road B

Saint Paul, Minnesota 55113

REGISTERED CIVIL ENGINEER AND LAND SURVEYOR

**Certificate
of Survey**

I Heroby Certify that this plat shows a survey made by me of the property described on this plat, and that the corners are correctly placed as shown, and that all locations have been correctly shown. 10/7/77 Added House Location

Surveyed For Ted Glasrud Assoc

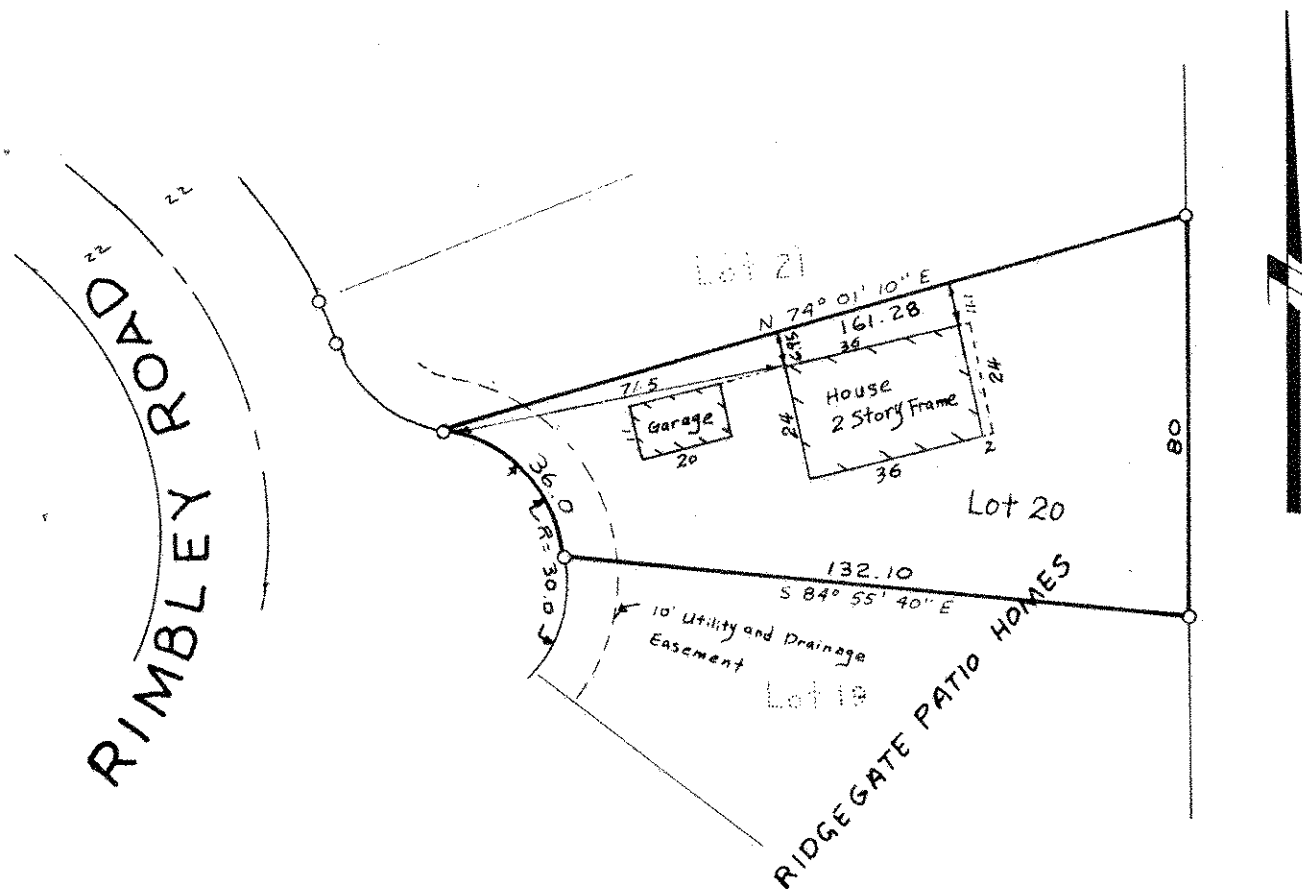
Date July 14, 1977

Scale 1" = 40'

By Charles O. Georgi
REGISTERED LAND SURVEYOR

Description:

Lot 20, Block 5,
Ridgegate Patio Homes
Washington County,
Minnesota.



○ Denotes Iron Pipe Monuments Set