

FROM THE OFFICE OF

CHARLES O. GEORGI COMPANY

2215 West County Road B

Saint Paul, Minnesota 55113

REGISTERED CIVIL ENGINEER AND LAND SURVEYOR

Certificate of Survey

I Heroby Certify that this plat shows a survey made by me of the property described on this plat, and that the corners are correctly placed as shown, and that all locations have been correctly shown. 10/24/77 Added House Location C.O.G.

Surveyed For TED GLASRUO Assoc.

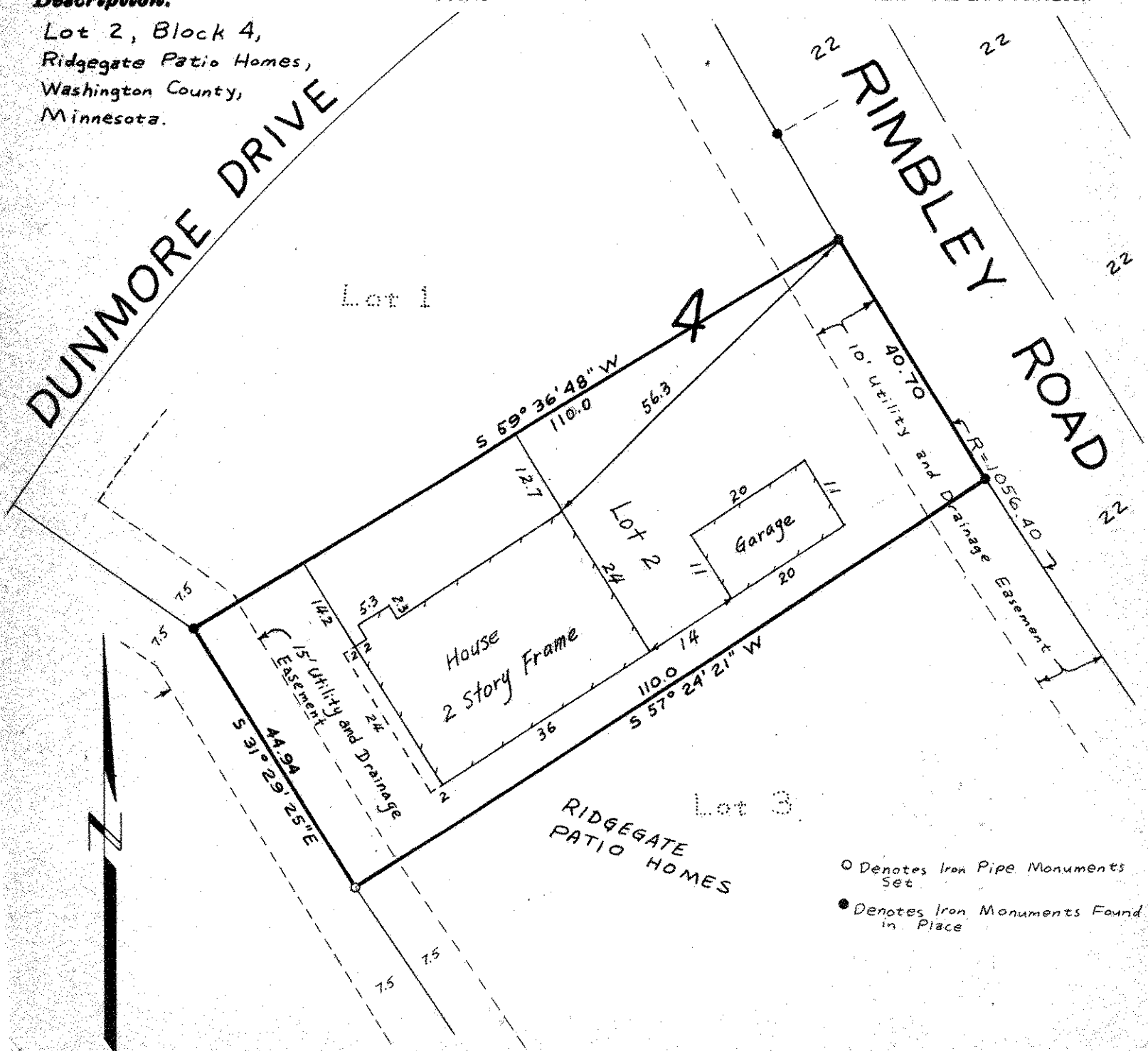
Date July 1977

Scale 1" = 20'

By Charles O. Georgi
REGISTERED LAND SURVEYOR

Description:

Lot 2, Block 4,
Ridgegate Patio Homes,
Washington County,
Minnesota.



○ Denotes Iron Pipe Monuments Set

● Denotes Iron Monuments Found in Place