

**Certificate
of Survey**

FROM THE OFFICE OF
CHARLES O. GEORGI COMPANY
 2215 West County Road B Saint Paul, Minnesota 55113
 REGISTERED CIVIL ENGINEER AND LAND SURVEYOR

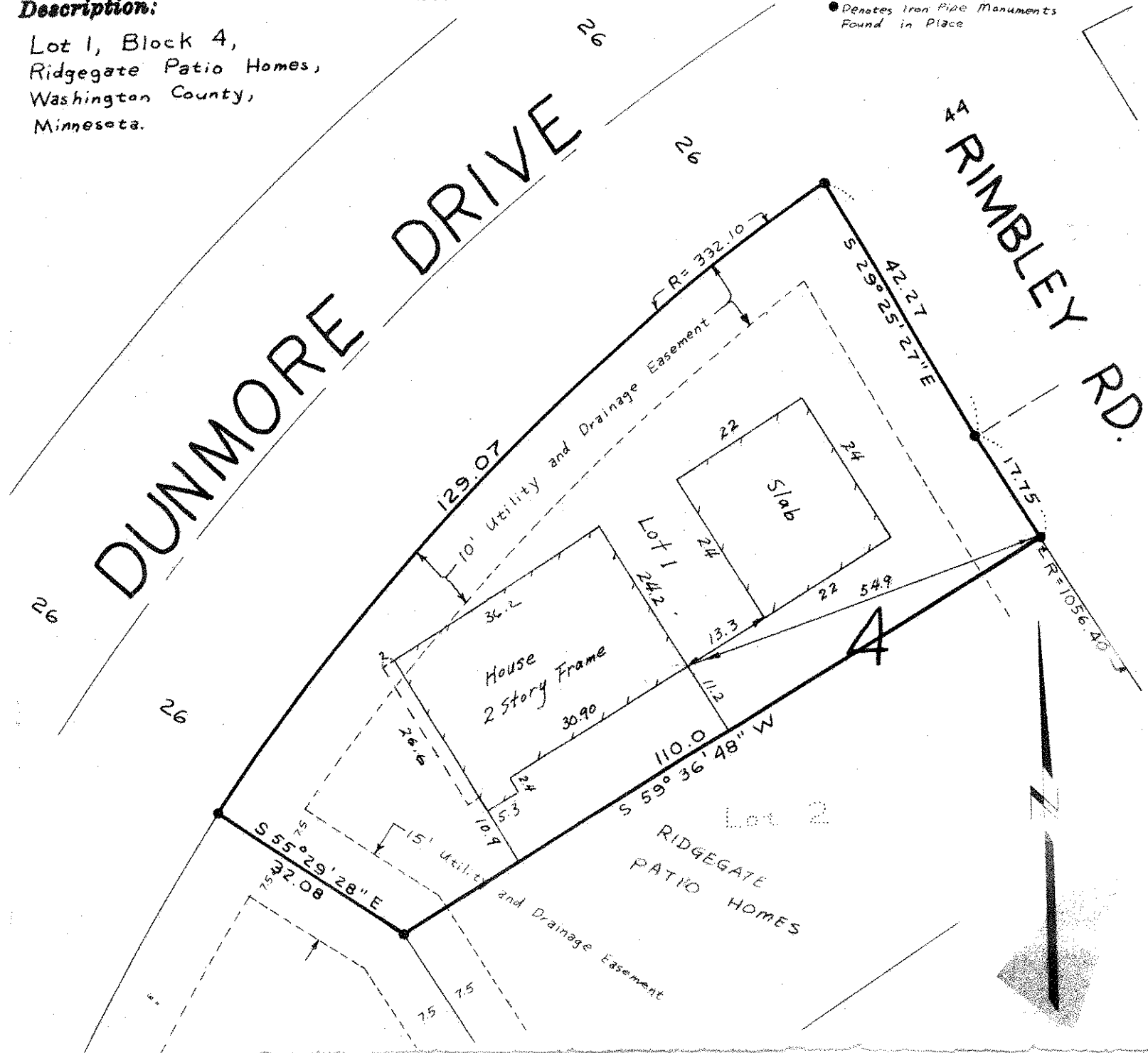
I Heroby Certify that this plat shows a survey made by me of the property described on this plat, and that the corners are correctly placed as shown, and that all locations have been correctly shown. 10/24/77 Added House Location

Surveyed For TED GLASRU Assoc.
 Date July 1977
 Scale 1" = 20'

By Charles O. Georgi
 REGISTERED LAND SURVEYOR

Description:

Lot 1, Block 4,
 Ridgeway Patio Homes,
 Washington County,
 Minnesota.



● Denotes Iron Pipe Monuments
 Found in Place