

NE 17-28-21

FROM THE OFFICE OF

# CHARLES O. GEORGI COMPANY

2215 West County Road B

Saint Paul, Minnesota 55113

REGISTERED CIVIL ENGINEER AND LAND SURVEYOR

## Certificate of Survey

I Hereby Certify that this plat shows a survey made by me of the property described on this plat, and that the corners are correctly placed as shown, and that all locations have been correctly shown. 10/24/77 Added House Location

Surveyed For Ted Glasrud Assoc.

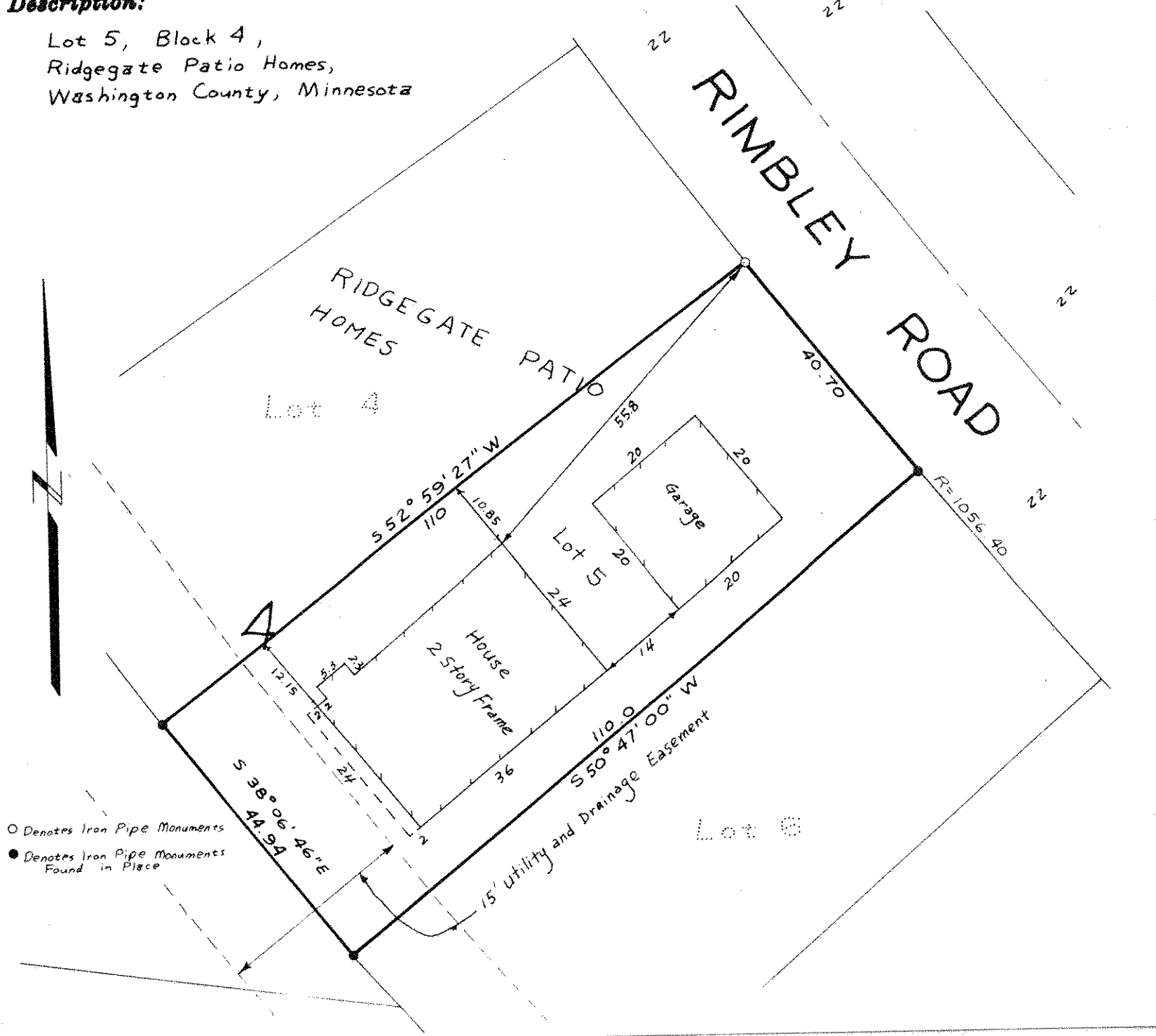
Date July 1977

Scale 1" = 20'

By Charles O. Georgi  
REGISTERED LAND SURVEYOR

### Description:

Lot 5, Block 4,  
Ridgegate Patio Homes,  
Washington County, Minnesota



○ Denotes Iron Pipe Monuments  
● Denotes Iron Pipe Monuments Found in Place