

NE 17 26 21

FROM THE OFFICE OF

# CHARLES O. GEORGI COMPANY

2215 West County Road B

Saint Paul, Minnesota 55113

REGISTERED CIVIL ENGINEER AND LAND SURVEYOR

## Certificate of Survey

I Heroby Certify that this plat shows a survey made by me of the property described on this plat, and that the corners are correctly placed as shown, and that all locations have been correctly shown. 1/11/78 Added House Location C.O.G.

Surveyed For Ted Glasrud Assoc

Date Oct 1977

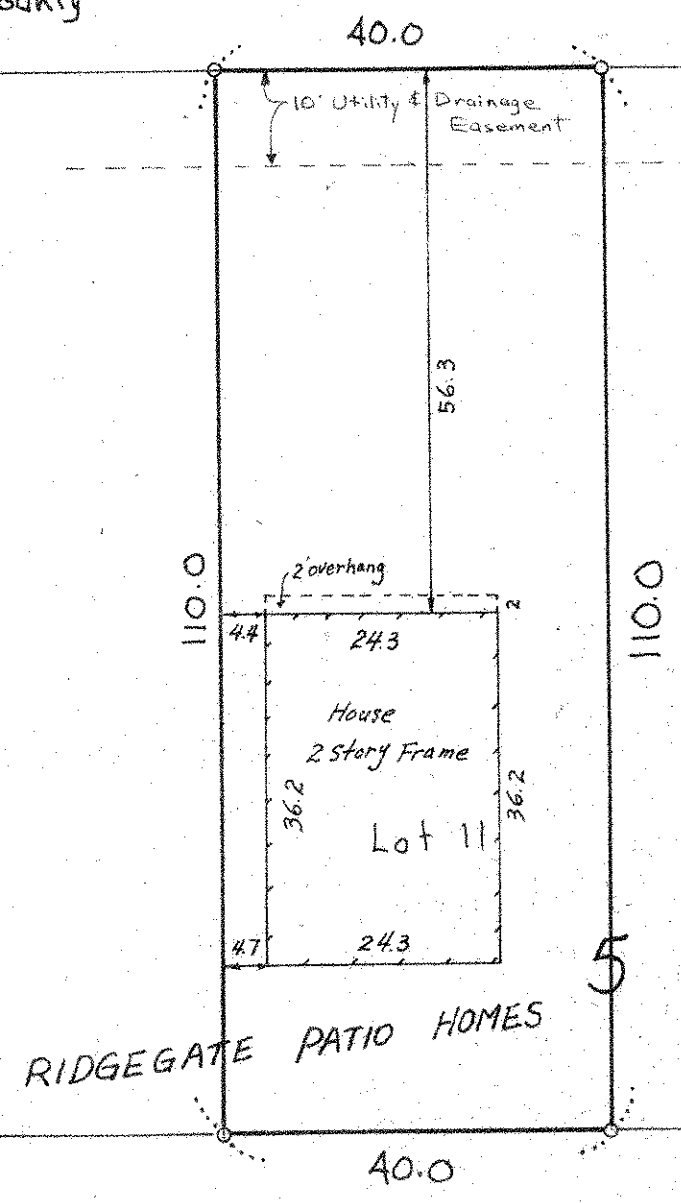
Scale 1" = 20'

By Charles O. Georgi  
REGISTERED LAND SURVEYOR

**Description:**

Lot 11,  
Block 5,  
Ridgegate Patio  
Homes,  
Washington County  
Minnesota.

### RIMBLEY ROAD



o Denotes iron pipe monument.