

FROM THE OFFICE OF

CHARLES O. GEORGI COMPANY

2215 West County Road B

Saint Paul, Minnesota 55113

REGISTERED CIVIL ENGINEER AND LAND SURVEYOR

Certificate of Survey

I Heroby Certify that this plat shows a survey made by me of the property described on this plat, and that the corners are correctly placed as shown, and that all locations have been correctly shown. 11/19/78 Added Ho location 608'

Surveyed For Ted Glasrud Assoc.

Date Oct 1977

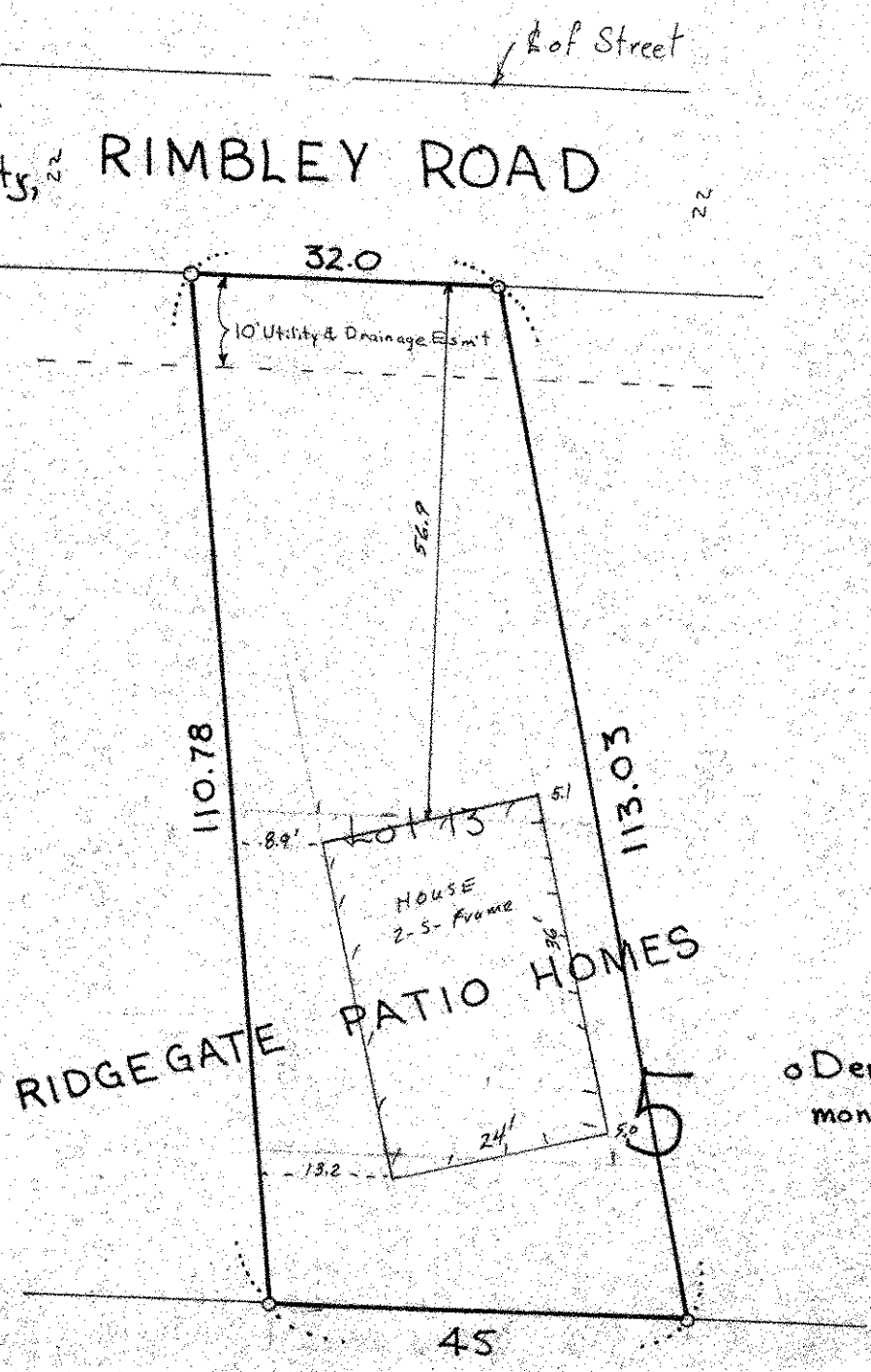
Scale 1" = 20'

By Charles O. Georgi
REGISTERED LAND SURVEYOR

Description:

Lot 13,
Block S,
Ridgegate Patio
Homes,
Washington County,
Minnesota,

RIMBLEY ROAD



o Denotes iron pipe monument.