

FROM THE OFFICE OF

# CHARLES O. GEORGI COMPANY

2215 West County Road B

Saint Paul, Minnesota 55113

REGISTERED CIVIL ENGINEER AND LAND SURVEYOR



*I Hereby Certify that this plat shows a survey made by me of the property described on this plat, and that the corners are correctly placed as shown, and that all locations have been correctly shown.*

Surveyed For Dale Anderson

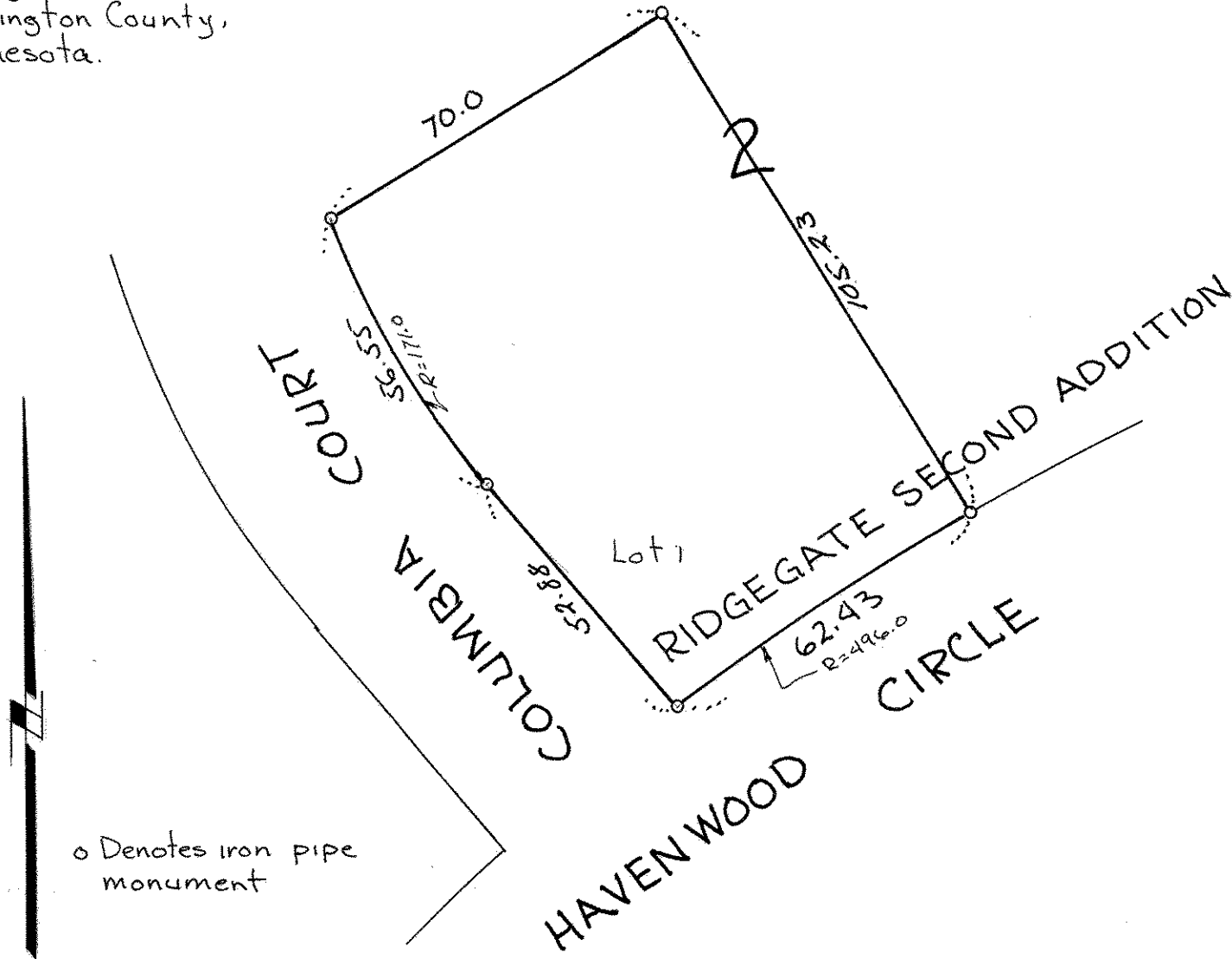
Date February 1978

Scale 1" = 30'

By Donald W. Schmidt  
REGISTERED LAND SURVEYOR

**Description:**

Lot 1,  
Block 2,  
Ridgegate Second Addition,  
Washington County,  
Minnesota.



o Denotes iron pipe monument