

FROM THE OFFICE OF

# CHARLES O. GEORGI COMPANY

2215 West County Road B Saint Paul, Minnesota 55113

REGISTERED CIVIL ENGINEER AND LAND SURVEYOR

## Certificate of Survey

I Hereby Certify that this plat shows a survey made by me of the property described on this plat, and that the corners are correctly placed as shown, and that all locations have been correctly shown.

Surveyed For Ted Glasrud Assoc.

Date May 1978

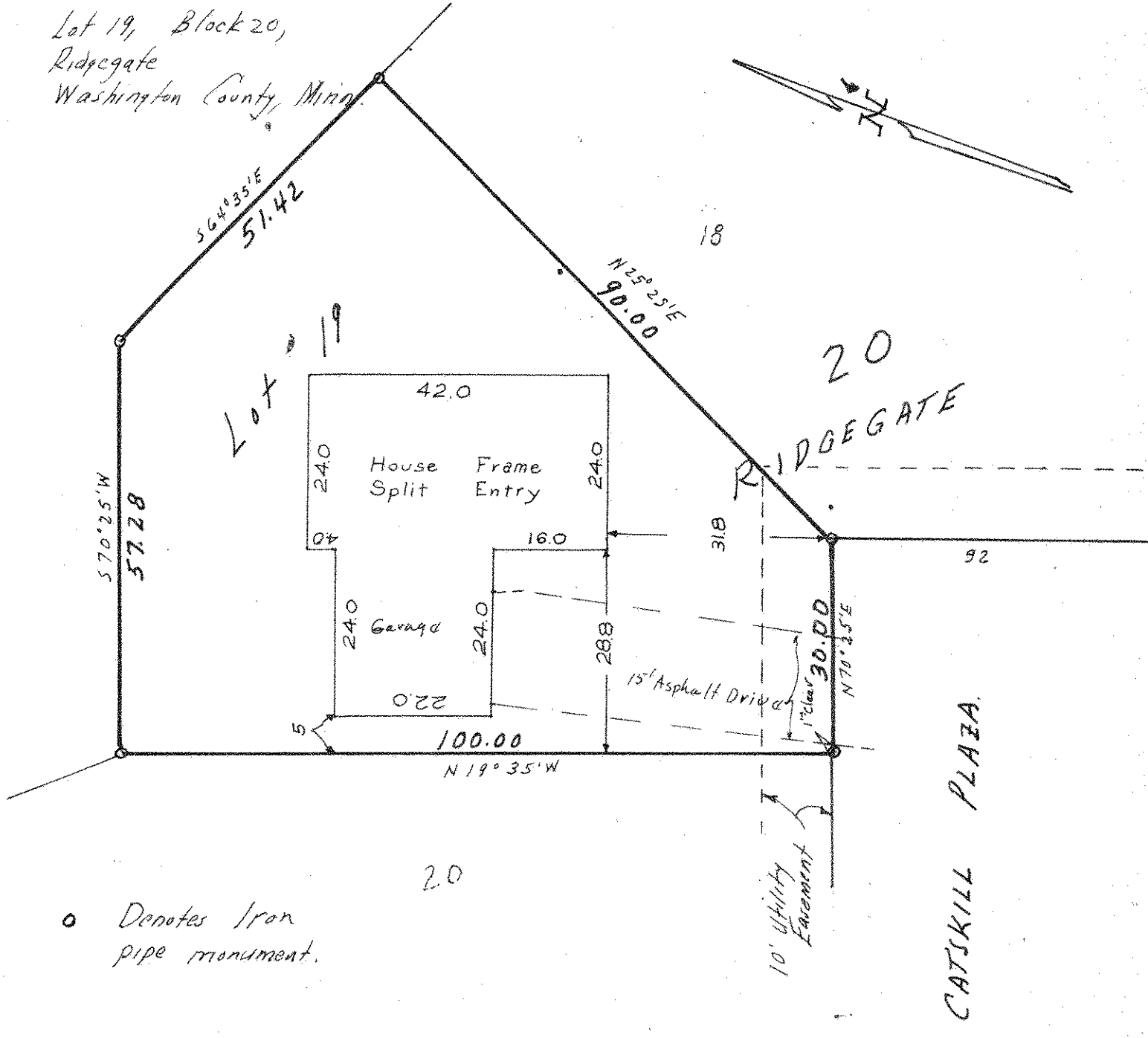
Scale 1" = 20'

7-31-78 Hse loc DWS  
9-15-78 Added Drive to DWS

By Charles O. Georgi  
REGISTERED LAND SURVEYOR

Description:

Lot 19, Block 20,  
Ridgegate  
Washington County, Minn.



o Denotes Iron pipe monument.