

HE 17 821

FROM THE OFFICE OF

CHARLES O. GEORGI COMPANY

2215 West County Road B

Saint Paul, Minnesota 55113

REGISTERED CIVIL ENGINEER AND LAND SURVEYOR

Certificate of Survey

I Hereby Certify that this plat shows a survey made by me of the property described on this plat, and that the corners are correctly placed as shown, and that all locations have been correctly shown. 7-31-78 Hsc loc 205

Surveyed For Ted Glasrud Assoc.

Date May 1978

Scale 1" = 20'

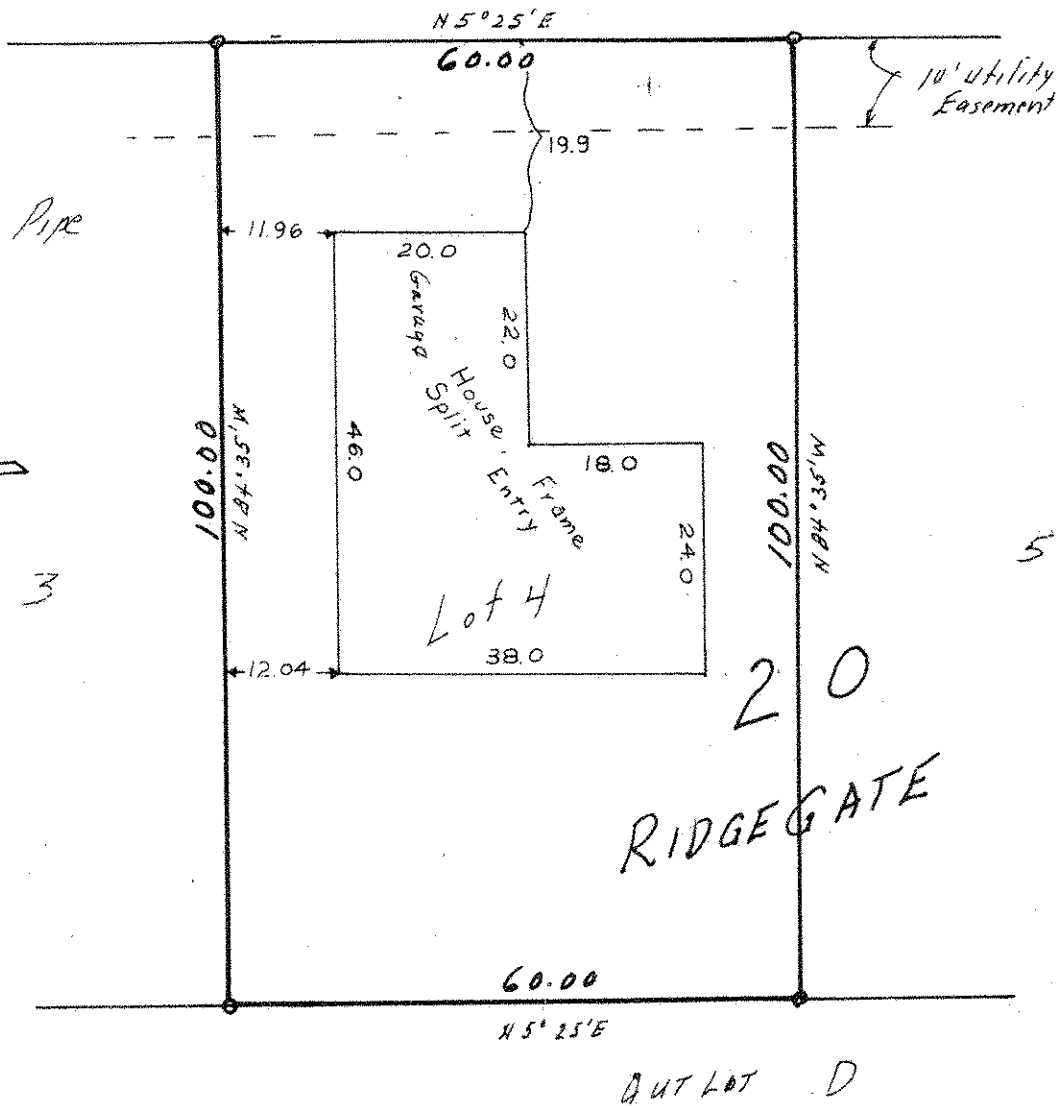
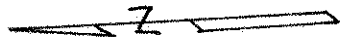
By Charles O. Georgi
REGISTERED LAND SURVEYOR

Description:

Lot 4, Block 20
Ridgegate
Washington County, Minn.

40 CATSKILL PLAZA.

o Denotes Iron Pipe Monument.



OUT LOT D