

NE 17 2821

FROM THE OFFICE OF

CHARLES O. GEORGI COMPANY

2215 West County Road B Saint Paul, Minnesota 55113
REGISTERED CIVIL ENGINEER AND LAND SURVEYOR

Certificate of Survey

I Hereby Certify that this plat shows a survey made by me of the property described on this plat, and that the corners are correctly placed as shown, and that all locations have been correctly shown. 7-31-78 Use loc DECS

Surveyed For Ted Glasrud Assoc

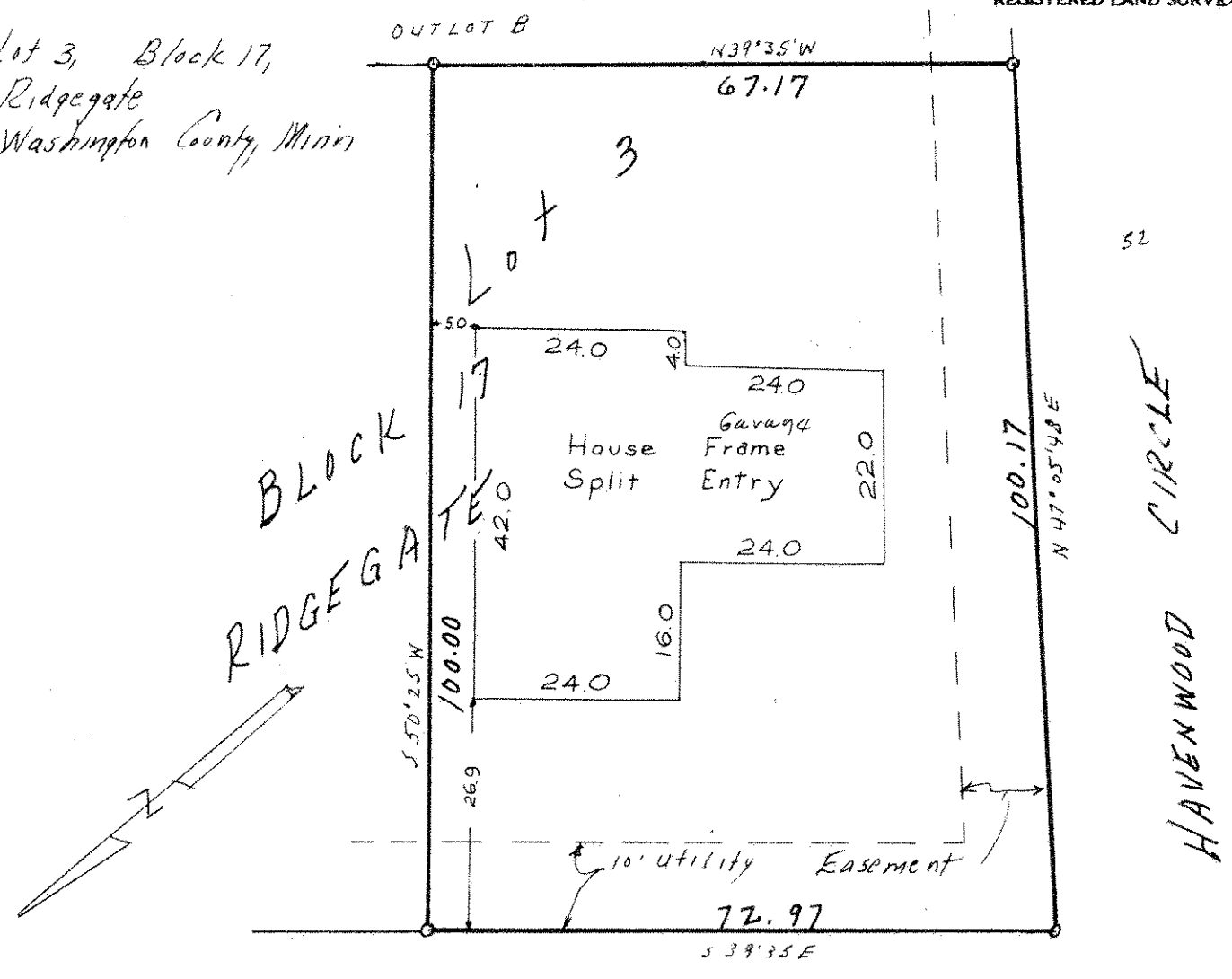
Date May 1978

Scale 1" = 20'

By Charles O. Georgi
REGISTERED LAND SURVEYOR

Description:

Lot 3, Block 17,
Ridgegate
Washington County, Minn



o Denotes Iron Pipe Monument.

CASCADE PLAZA 40